

NOTES

APPROACH SLAB SHALL NOT BE CONSTRUCTED PRIOR TO COMPLETION OF THE BRIDGE DECK.

FOR BRIDGE APPROACH FILL INCLUDING GEOTEXTILE, 6" Ø DRAINAGE PIPE, AND SELECT MATERIAL, SEE ROADWAY PLANS.

GEOTEXTILE SHALL BE TYPE 1 IN ACCORDANCE WITH THE STANDARD SPECIFICATIONS SECTION 1056.

SELECT MATERIAL BACKFILL (CLASS V OR CLASS VI) SHALL BE IN ACCORDANCE WITH STANDARD SPECIFICATIONS SECTION 1016.

SELECT MATERIAL BACKFILL IS TO BE CONTINUOUS ALONG FILL FACE OF BACKWALL FROM OUTSIDE EDGE TO OUTSIDE EDGE OF APPROACH SLAB.

FOR THE 6" Ø DRAINAGE PIPE OUTLET(S), SEE ROADWAY STANDARD DRAWINGS.

AREA BETWEEN THE WINGWALL AND APPROACH SLAB SHALL BE GRADED TO DRAIN THE WATER AWAY FROM THE FILL FACE OF THE BRIDGE AND SHALL BE PAVED. SEE ROADWAY PLANS.

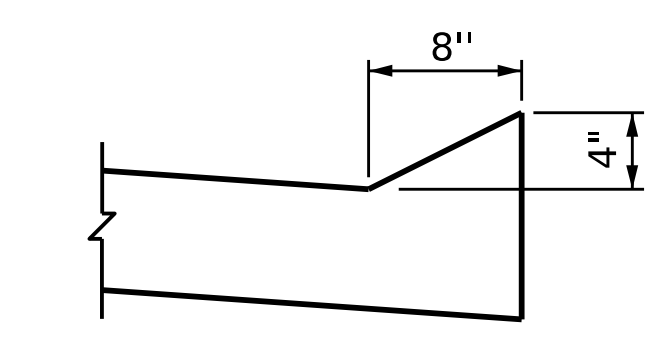
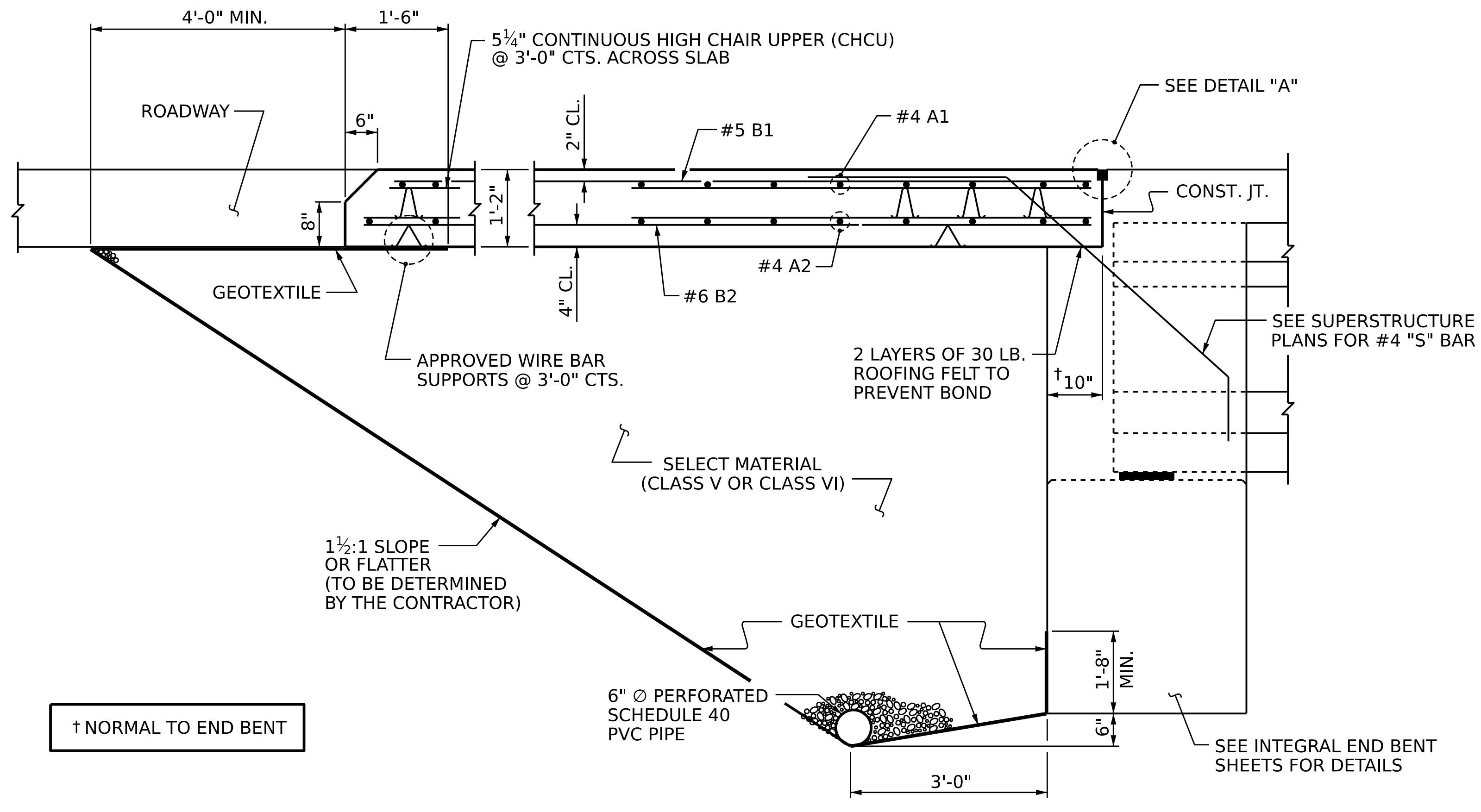
THE JOINT OPENING AT THE APPROACH SLAB/DECK INTERFACE SHALL BE SAWED NO MORE THAN 12 HOURS AFTER THE APPROACH SLAB IS CAST. THE JOINT SHALL BE CLEANED OF ALL DEBRIS BEFORE THE SEALANT IS APPLIED. THE JOINT SEALER MATERIAL SHALL CONFORM TO THE REQUIREMENTS OF SECTION 1028-3 OF THE STANDARD SPECIFICATIONS.

AT THE CONTRACTORS OPTION, "TYPE A - ALTERNATE APPROACH FILL" IN LIEU OF "TYPE I - STANDARD APPROACH FILL" MAY BE CONSTRUCTED AT NO ADDITIONAL COST TO THE DEPARTMENT. SEE SHEET 6 OF 6 FOR DETAILS.

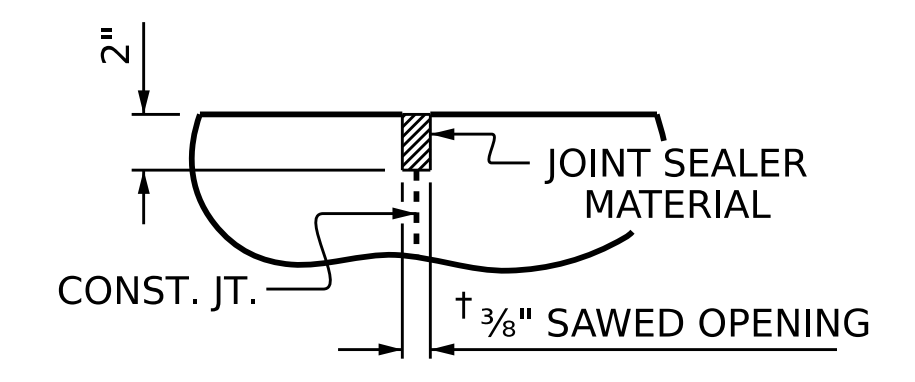
BILL OF MATERIAL

STAGE I						STAGE II						STAGE III								
FOR ONE APPROACH SLAB (2 REQ'D)						FOR ONE APPROACH SLAB (2 REQ'D)						FOR ONE APPROACH SLAB (2 REQ'D)								
BAR	NO.	SIZE	TYPE	LENGTH	WEIGHT	BAR	NO.	SIZE	TYPE	LENGTH	WEIGHT	BAR	NO.	SIZE	TYPE	LENGTH	WEIGHT			
* A1	26	#4	STR	38'-5"	667	* A1	26	#4	STR	38'-5"	667	A1	52	#4	STR	28'-3"	981			
A2	26	#4	STR	38'-5"	667	A2	26	#4	STR	38'-5"	667	A2	52	#4	STR	28'-1"	976			
* B1	70	#5	STR	24'-1"	1758	* B1	70	#5	STR	24'-1"	1758	B1	106	#5	STR	24'-1"	2663			
B2	70	#6	STR	24'-7"	2585	B2	70	#6	STR	24'-7"	2585	B2	106	#6	STR	24'-7"	3914			
REINFORCING STEEL					3,252 LBS.	REINFORCING STEEL					3,252 LBS.	REINFORCING STEEL					4,890 LBS.			
EPOXY COATED REINFORCING STEEL					2,425 LBS.	EPOXY COATED REINFORCING STEEL					2,425 LBS.	EPOXY COATED REINFORCING STEEL					3,644 LBS.			
CLASS AA CONCRETE						CLASS AA CONCRETE						CLASS AA CONCRETE								
POUR #1 (SLAB)					37.9 C.Y.	POUR #1 (SLAB)					37.8 C.Y.	POUR #1 (SLAB)					57.1 C.Y.			
CLASS AA CONCRETE						37.9 C.Y.	CLASS AA CONCRETE						37.8 C.Y.	CLASS AA CONCRETE						57.1 C.Y.

SPlice LENGTHS		
BAR SIZE	EPOXY COATED	UNCOATED
#4	1' - 11"	1' - 7"
#5	2' - 5"	2' - 0"
#6	3' - 7"	2' - 5"



SECTION N-N



DETAIL "A"

PROJECT NO. B-4442
BUNCOMBE COUNTY
 STATION: 315+72.39 -L-
 SHEET 5 OF 6

AECOM
AECOM TECHNICAL SERVICES OF NC, INC.
 5430 WADE PARK BOULEVARD, SUITE 200
 RALEIGH, NC 27607
 (919) 854-6200 www.aecom.com
 AECOM License No. F0242

8/8/2022

DocuSigned by:
 John E. Sloan
 94908320C8D481

STATE OF NORTH CAROLINA
 DEPARTMENT OF TRANSPORTATION
 RALEIGH

STANDARD
 BRIDGE APPROACH SLAB FOR
 INTEGRAL ABUTMENT WITH
 FLEXIBLE PAVEMENT

REVISIONS						SHEET NO.
NO.	BY:	DATE:	NO.	BY:	DATE:	TOTAL SHEETS
1			3			5-57
2			4			58

DRAWN BY : D.R. DRUM DATE : 04/2022
 CHECKED BY : J.C. MORRISON DATE : 05/2022
 DESIGN ENGINEER OF RECORD : J.E. SLOAN DATE : 05/2022

DOCUMENT NOT CONSIDERED
 FINAL UNLESS ALL
 SIGNATURES COMPLETED