

NOTES:

THE COST OF THE CONCRETE MEDIAN BARRIER ON THE APPROACH SLAB SHALL BE INCLUDED IN THE LINEAR FOOT CONTRACT PRICE BID FOR "CONCRETE MEDIAN BARRIER".

THE CONCRETE MEDIAN BARRIER ON EACH APPROACH SLAB SHALL NOT BE CAST UNTIL ALL APPROACH SLAB CONCRETE HAS BEEN CAST AND HAS REACHED A MINIMUM COMPRESSIVE STRENGTH OF 3,000 PSI.

ALL REINFORCING STEEL IN CONCRETE MEDIAN BARRIERS SHALL BE EPOXY COATED.

GROOVED CONTRACTION JOINTS, 1/2" IN DEPTH, SHALL BE TOOLED IN ALL EXPOSED FACES OF THE MEDIAN BARRIER AND IN ACCORDANCE WITH ARTICLE 825-10(B) OF THE STANDARD SPECIFICATIONS. THE CONTRACTION JOINT SHALL BE LOCATED AT EACH THIRD POINT BETWEEN MEDIAN BARRIER EXPANSION JOINTS. ONLY ONE CONTRACTION JOINT IS REQUIRED AT MIDPOINT OF MEDIAN BARRIER SEGMENTS LESS THAN 20 FEET IN LENGTH AND NO CONTRACTION JOINTS ARE REQUIRED FOR THOSE SEGMENTS LESS THAN 10 FEET IN LENGTH.

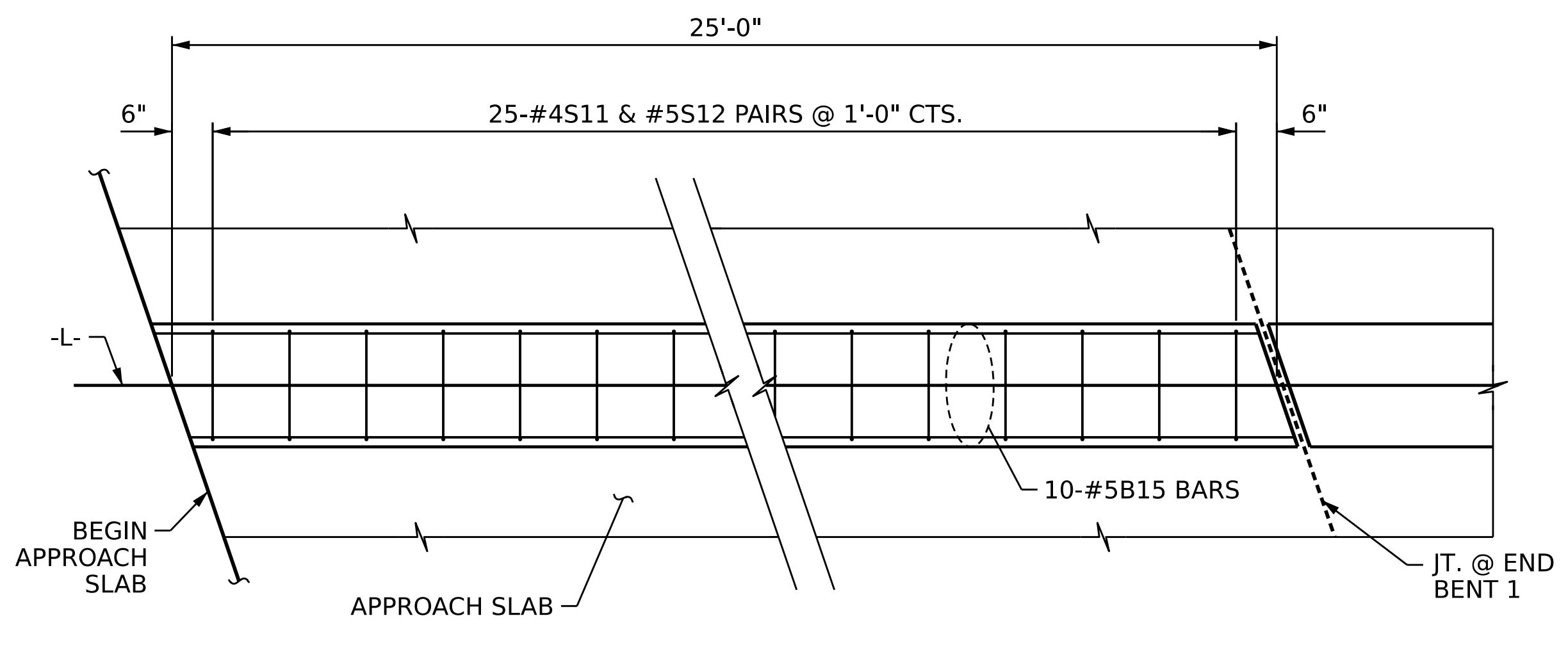
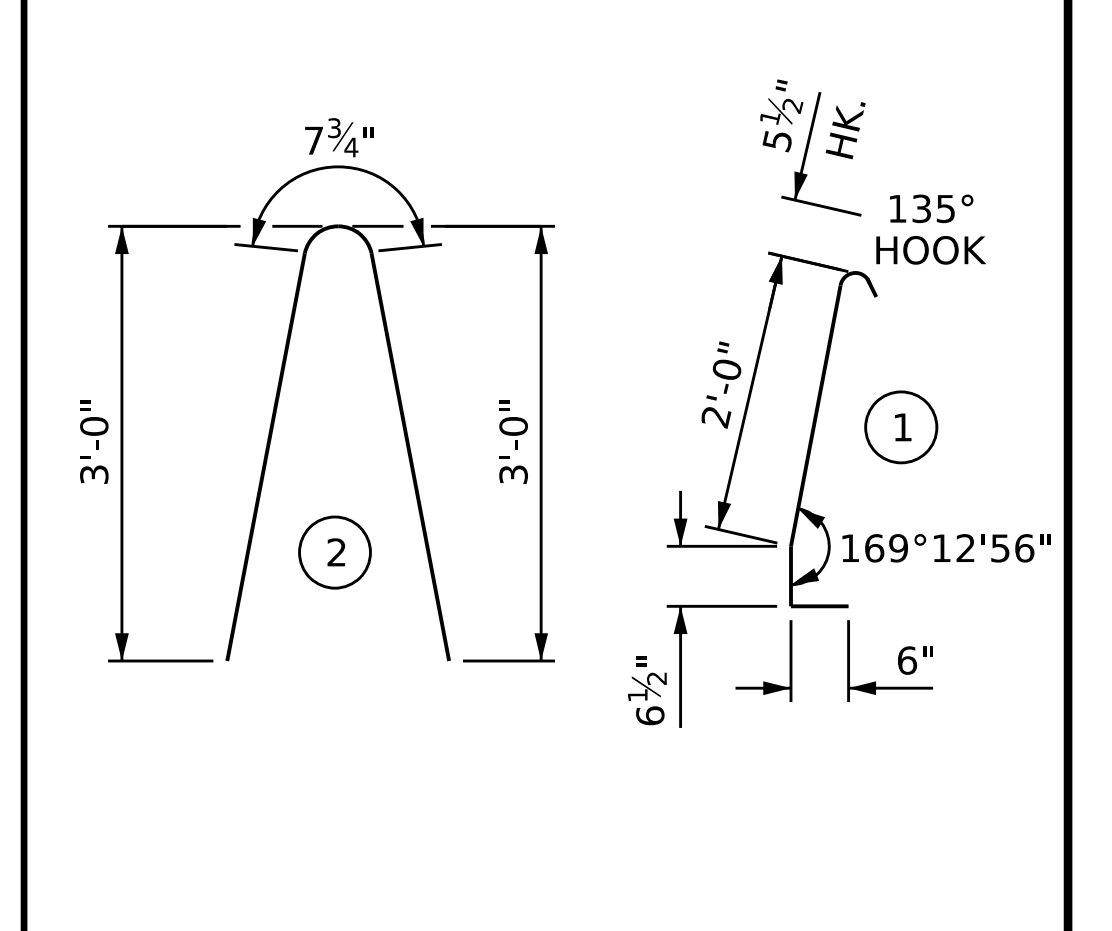
FOR ADDITIONAL NOTES, SEE SHEET 5 OF 6.

BILL OF MATERIAL

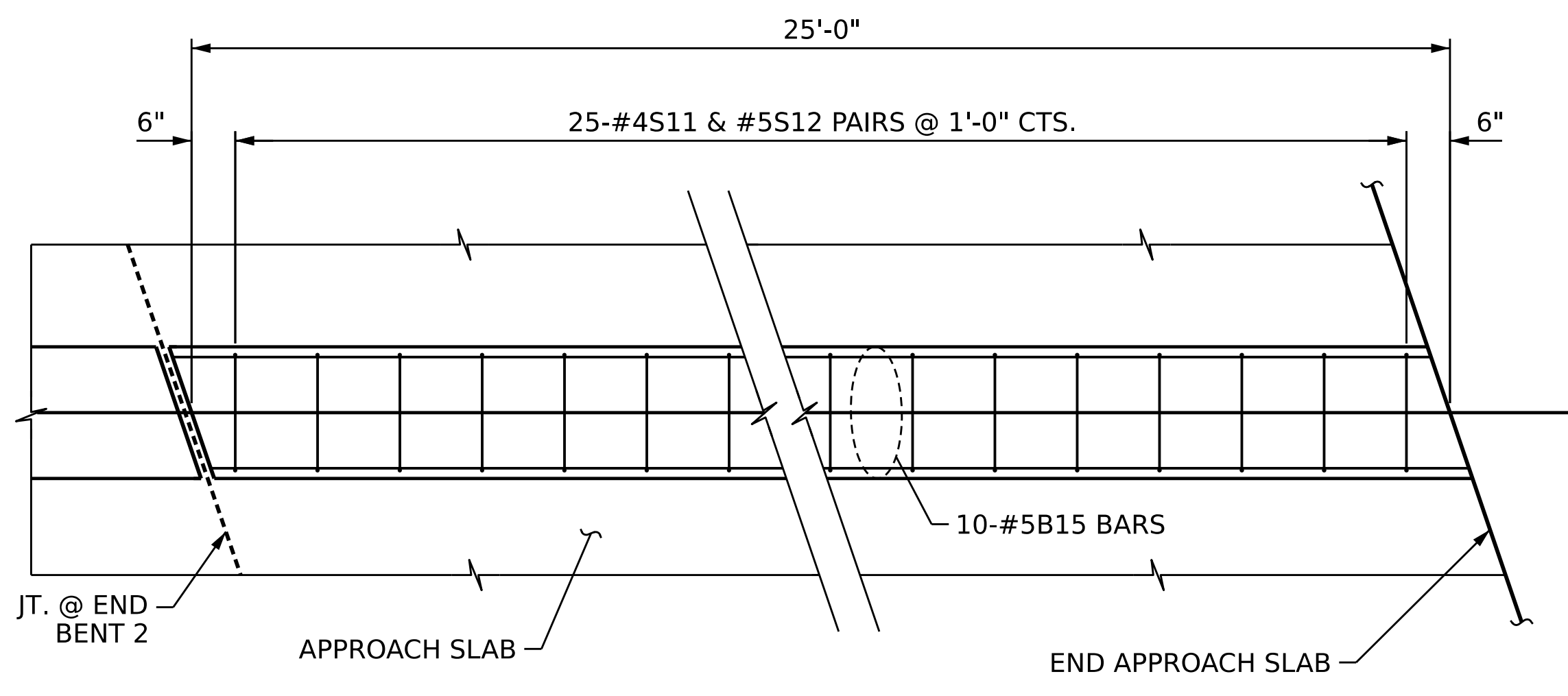
FOR ONE APPROACH SLAB (2 REQ'D)

BAR	NO.	SIZE	TYPE	LENGTH	WEIGHT
*B15	20	5	STR	24'-8"	515
*S11	25	4	2	8'-1"	135
*S12	50	5	1	3'-6"	183
* EPOXY COATED REINFORCING STEEL					833 LBS.
CLASS AA CONCRETE					8.6 C.Y.
CONCRETE MEDIAN BARRIER					50 L.F.

BAR TYPES

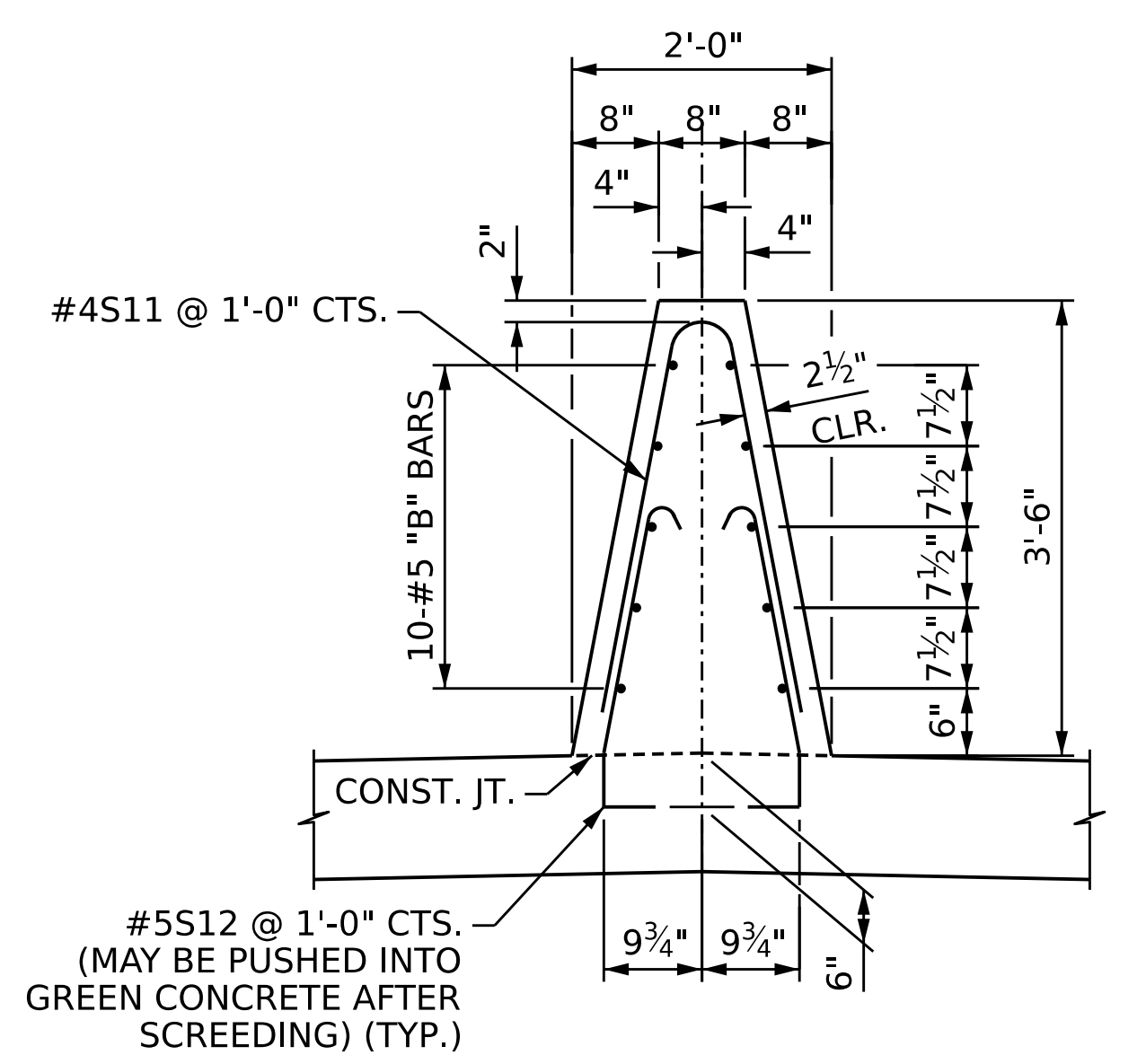


PLAN AT END BENT 1

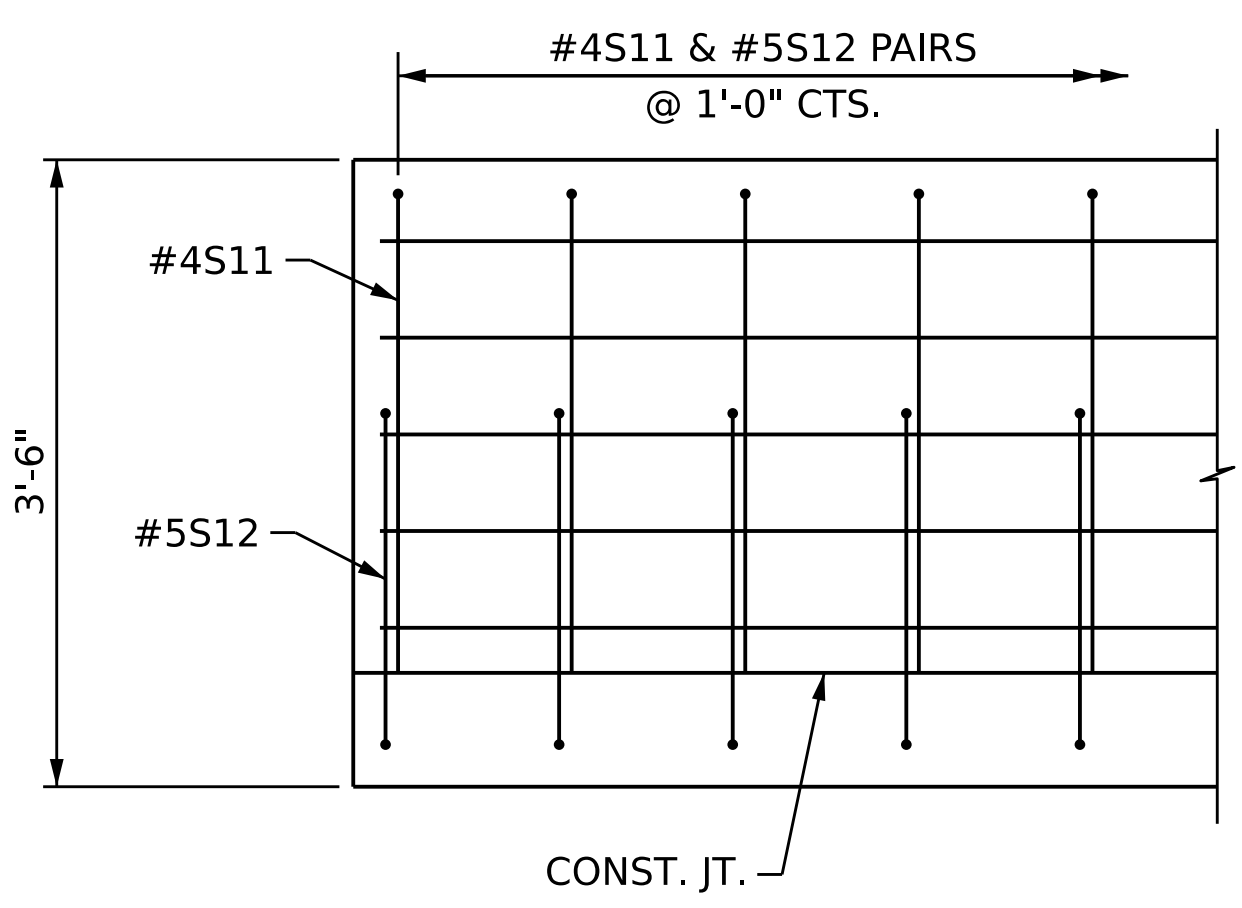


PLAN AT END BENT 2

PLAN OF CONCRETE MEDIAN BARRIER



SECTION THRU CONCRETE MEDIAN BARRIER



SIDE VIEW

CONCRETE MEDIAN BARRIER DETAILS

PROJECT NO. B-4442
BUNCOMBE COUNTY
 STATION: 315+72.39 -L-
 SHEET 4 OF 6

AECOM
 AECOM TECHNICAL SERVICES OF NC, INC.
 5430 WADE PARK BOULEVARD, SUITE 200
 RALEIGH, NC 27607
 (919) 854-6200 www.aecom.com
 AECOM License No. F0242

8/17/2022

DocuSigned by
 John E. Sloan
 943068320C8D48

STATE OF NORTH CAROLINA
 DEPARTMENT OF TRANSPORTATION
 RALEIGH

BRIDGE APPROACH SLAB FOR
 INTEGRAL ABUTMENT WITH
 FLEXIBLE PAVEMENT

REVISIONS						SHEET NO.
NO.	BY:	DATE:	NO.	BY:	DATE:	S-56
1			3			TOTAL SHEETS 58
2			4			

DRAWN BY: B.T. LEROY DATE: 05/2022
 CHECKED BY: J.C. MORRISON DATE: 05/2022
 DESIGN ENGINEER OF RECORD: J.E. SLOAN DATE: 05/2022

DOCUMENT NOT CONSIDERED
 FINAL UNLESS ALL
 SIGNATURES COMPLETED