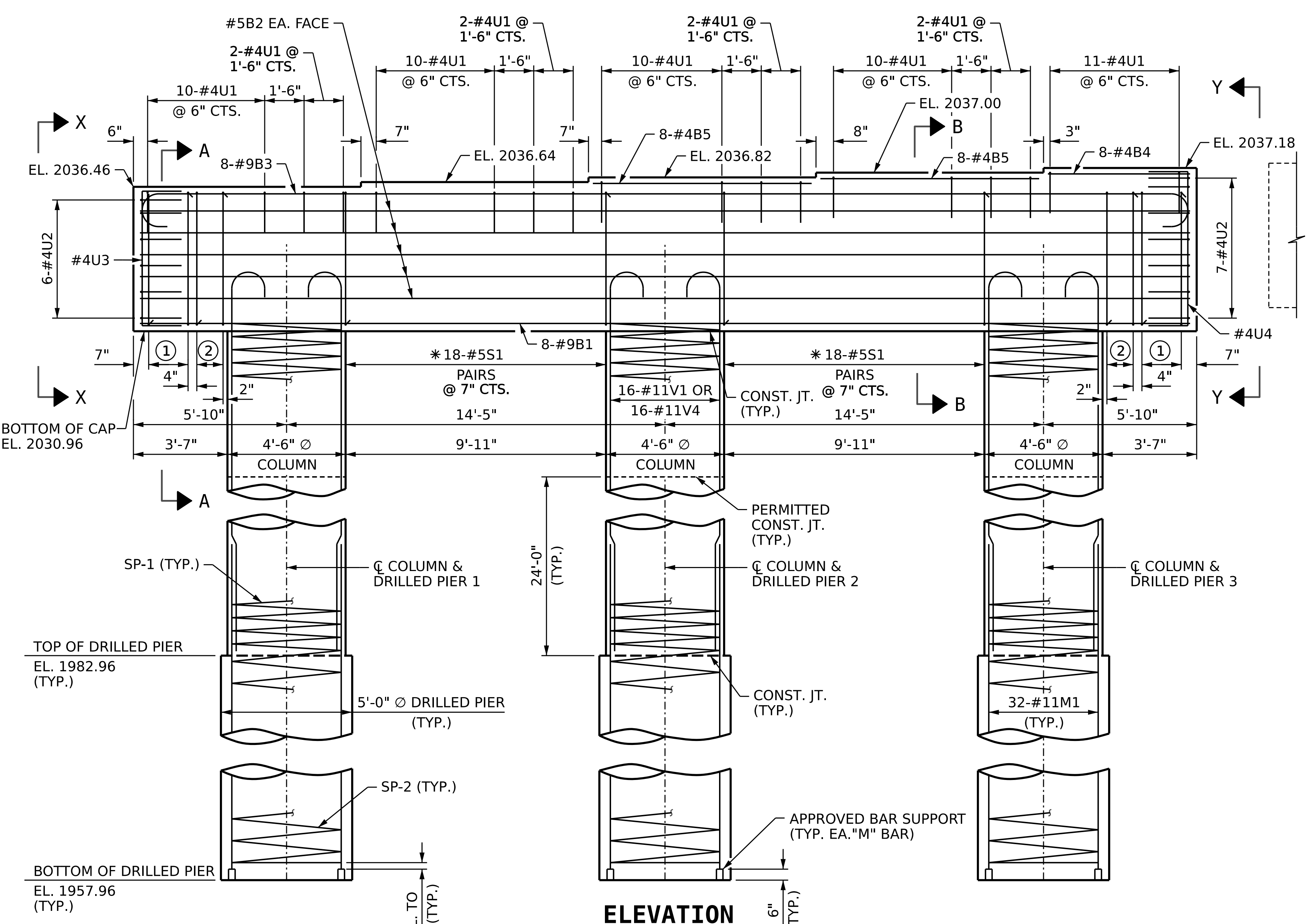
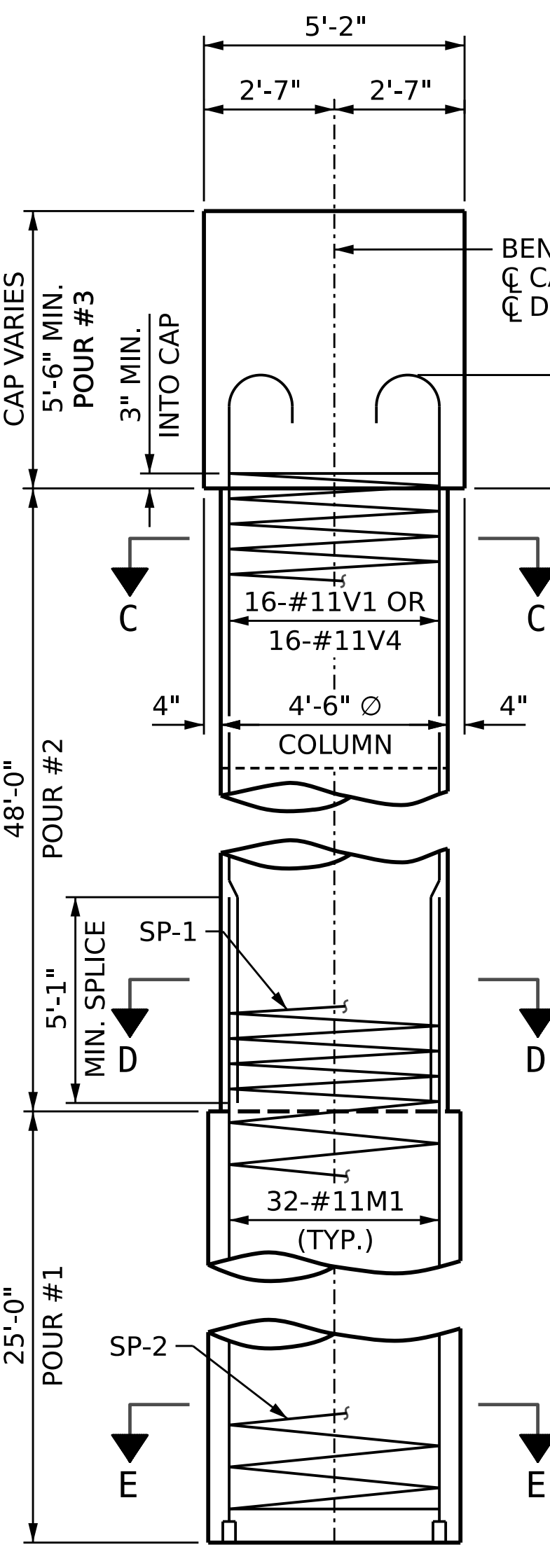


PLAN



ELEVATION

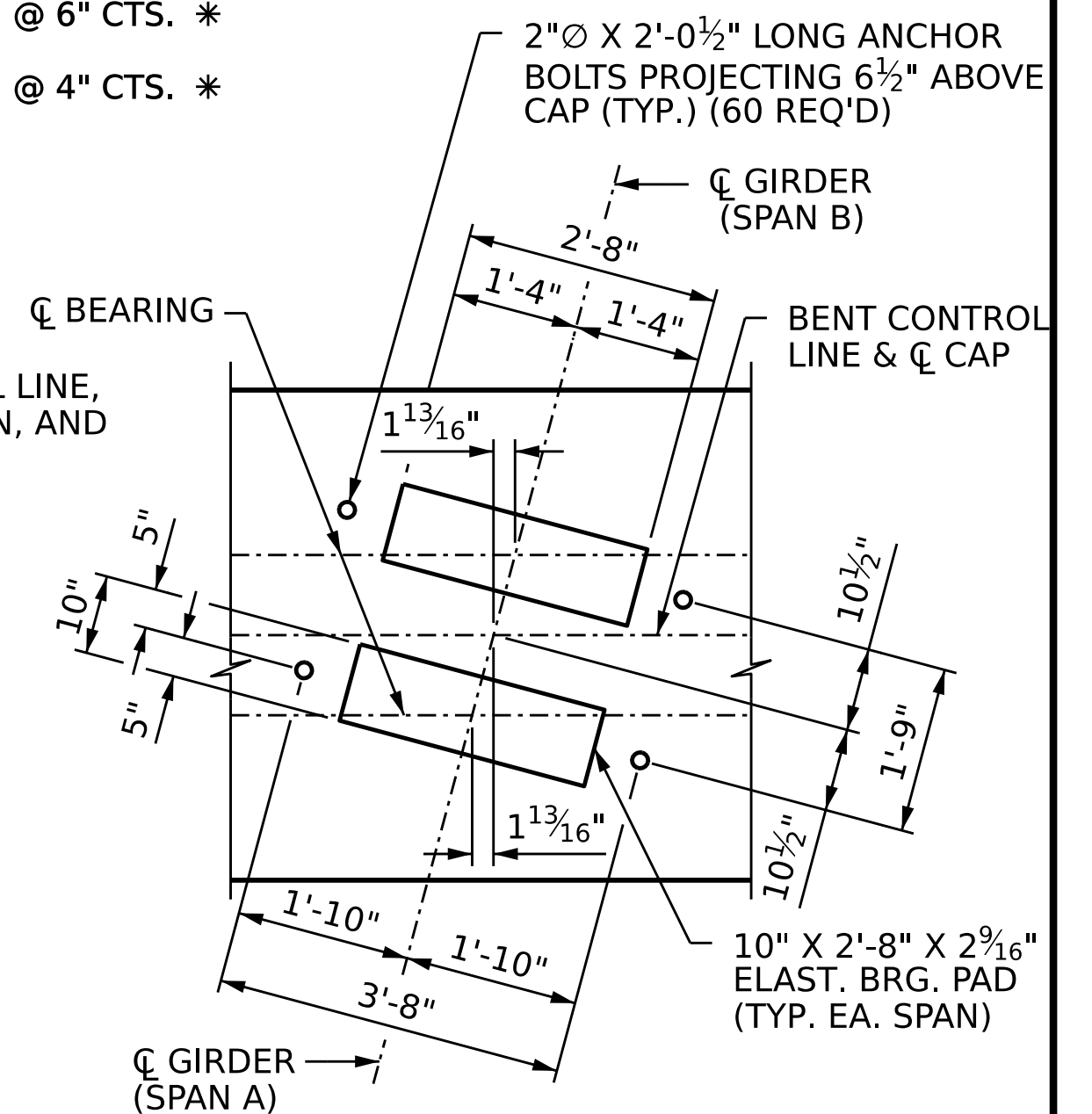


END ELEVATION

NOTES:

- STIRRUPS AND "U" BARS IN CAP MAY BE SHIFTED SLIGHTLY TO CLEAR ANCHOR BOLTS.
- ALL STEEL IN THE DRILLED PIERS IS INCLUDED IN THE PAY ITEMS FOR "REINFORCING STEEL" AND "SPIRAL COLUMN REINFORCING STEEL".
- FOR DRILLED PIERS AND PERMANENT STEEL CASING, SEE SECTION 411 OF THE STANDARD SPECIFICATIONS.
- THE CONTRACTOR'S ATTENTION IS CALLED TO THE FACT THAT THE LONGITUDINAL REINFORCEMENT FOR THE DRILLED PIERS IS DETAILED WITH 3 FEET OF EXTRA LENGTH.
- THE LOCATION OF THE CONSTRUCTION JOINT AT BENT 1 IS BASED ON AN APPROXIMATE GROUND LINE ELEVATION. IF THE CONSTRUCTION JOINT IS ABOVE THE ACTUAL GROUND ELEVATION, THE CONTRACTOR SHALL PLACE THE CONSTRUCTION JOINT 1 FOOT BELOW THE GROUND LINE.
- FOR CONSTRUCTION JOINT DETAIL, SECTIONS A-A, B-B, C-C, D-D, AND E-E, AND VIEWS X-X AND Y-Y, SEE SHEET 4 OF 5.
- HOOKS ON "V" BARS MAY BE TURNED AS NECESSARY FOR PLACING REINFORCING STEEL.
- * INVERT ALTERNATE #5S1 STIRRUPS
- SEE PILE AND DRILLED PIER FOUNDATION TABLES FOR DRILLED PIER FOUNDATION DATA.

- ① 4-#5S1 @ 6" CTS. *
- ② 4-#5S1 @ 4" CTS. *



DETAIL "A"

DIMENSIONS ARE TYPICAL FOR EACH BEARING AND FOR EACH GIRDER

PROJECT NO. B-4442
 BUNCOMBE COUNTY
 STATION: 315+72.39 -L-
 SHEET 1 OF 5

AECOM
AECOM TECHNICAL SERVICES OF NC, INC.
 5430 WADE PARK BOULEVARD, SUITE 200
 RALEIGH, NC 27607
 (919) 854-6200 www.aecom.com
 AECOM License No. F02842

8/17/2022

STATE OF NORTH CAROLINA DEPARTMENT OF TRANSPORTATION RALEIGH		SUBSTRUCTURE BENT 1 STAGE I			
REVISIONS					
NO.	BY:	DATE:	NO.	BY:	DATE:
1			3		
2			4		
SHEET NO.			S-40		
TOTAL SHEETS			58		

DRAWN BY: D.R. DRUM	DATE: 03/2022
CHECKED BY: J.C. MORRISON	DATE: 05/2022
DESIGN ENGINEER OF RECORD: J.E. SLOAN	DATE: 05/2022

DOCUMENT NOT CONSIDERED FINAL UNLESS ALL SIGNATURES COMPLETED