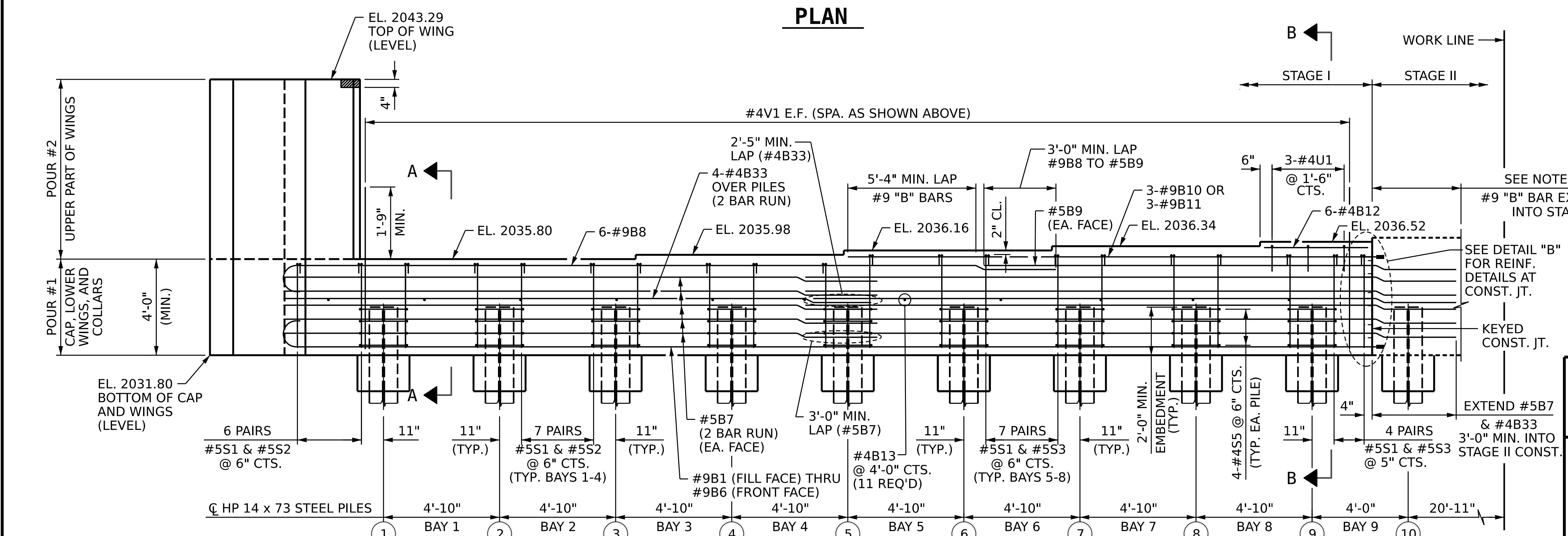


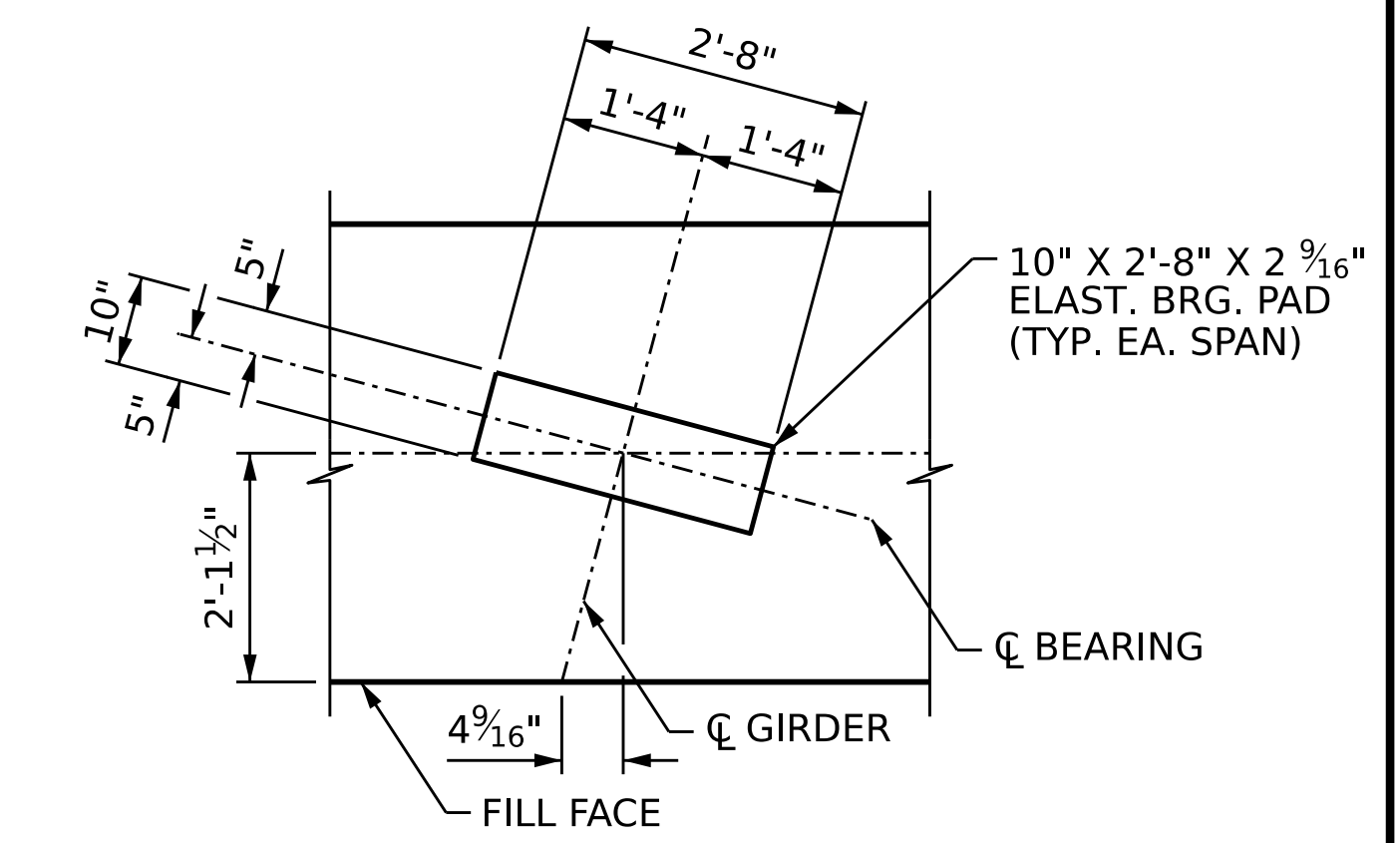
PLAN



ELEVATION

NOTES:

- MECHANICAL COUPLERS SHALL BE USED TO JOIN THE #9 BARS IN STAGE I WITH THE #9 "B" BARS IN STAGE II. THE LOCATION OF THE COUPLERS SHALL BE STAGGERED ON ALTERNATING BARS BY 2'-0" AND THE STAGE I BARS SHALL BE CUT ACCORDINGLY TO ALLOW A MINIMUM OF 1'-0" AND A MAXIMUM OF 3'-0" EXTENSION INTO STAGE II CONSTRUCTION.
- FOR MECHANICAL COUPLERS, SEE MECHANICAL BUTT SPLICES FOR REINFORCING STEEL IN STANDARD SPECIFICATIONS.
- THE CONTRACTOR'S ATTENTION IS CALLED TO THE FACT THAT THE LENGTHS OF THE #9 "B" BARS AT THE STAGED CONSTRUCTION JOINT MAY NEED TO BE ADJUSTED DUE TO THE TYPE OF MECHANICAL BUTT SPLICE CHOSEN BY THE CONTRACTOR. NO ADDITIONAL PAYMENT WILL BE MADE FOR ANY ADJUSTMENTS.
- THE TOP SURFACE OF THE END BENT CAP AND WINGS EXCEPT THE BEARING AREA AND AREA BEYOND THE LIMITS OF THE DECK SHALL BE RAKED TO A DEPTH OF 1/4".
- STIRRUPS IN CAP MAY BE SHIFTED AS NECESSARY TO CLEAR #4V1 BARS.
- THE TOP SURFACE OF THE INTEGRAL END BENT CAP, BEYOND THE LIMITS OF THE DECK, SHALL BE SLOPED TRANSVERSELY FROM THE FILL FACE TO THE FRONT FACE AT THE RATE OF 2%.
- FOR CONSTRUCTION JOINT DETAILS, SEE "KEYED CONSTRUCTION JOINT DETAIL" ON SHEET 2 OF 6.
- FOR WING DETAILS AND BLOCKOUT, SEE SHEET 4 OF 6.
- FOR SECTION A-A AND SECTION B-B, SEE SHEET 5 OF 6.
- FOR PILE SPlice DETAILS AND TEMPORARY DRAINAGE DETAILS, SEE SHEET 6 OF 6.
- FOR DETAIL "B", SEE "INTEGRAL END BENT 1" SHEET 5 OF 6.



DETAIL "A"

PROJECT NO. **B-4442**
 BUNCOMBE COUNTY
 STATION: **315+72.39 -L-**
 SHEET 1 OF 6

AECOM
AECOM TECHNICAL SERVICES OF NC, INC.
 5438 WIDE PARK BOULEVARD, SUITE 200
 RALEIGH, NC 27607
 (919) 854-6200
 AECOM License No. F0242

8/17/2022

STATE OF NORTH CAROLINA
 DEPARTMENT OF TRANSPORTATION
 RALEIGH

SUBSTRUCTURE
INTEGRAL END BENT 1
 STAGE I

| REVISIONS | | | | | | SHEET NO. |
|-----------|-----|-------|-----|-----|-------|-----------------|
| NO. | BY: | DATE: | NO. | BY: | DATE: | S-34 |
| 1 | | | 3 | | | TOTAL SHEETS 58 |
| 2 | | | 4 | | | |

DRAWN BY: **D.R. DRUM** DATE: **03/2022**
 CHECKED BY: **J.C. MORRISON** DATE: **05/2022**
 DESIGN ENGINEER OF RECORD: **J.E. SLOAN** DATE: **05/2022**

DOCUMENT NOT CONSIDERED
 FINAL UNLESS ALL
 SIGNATURES COMPLETED