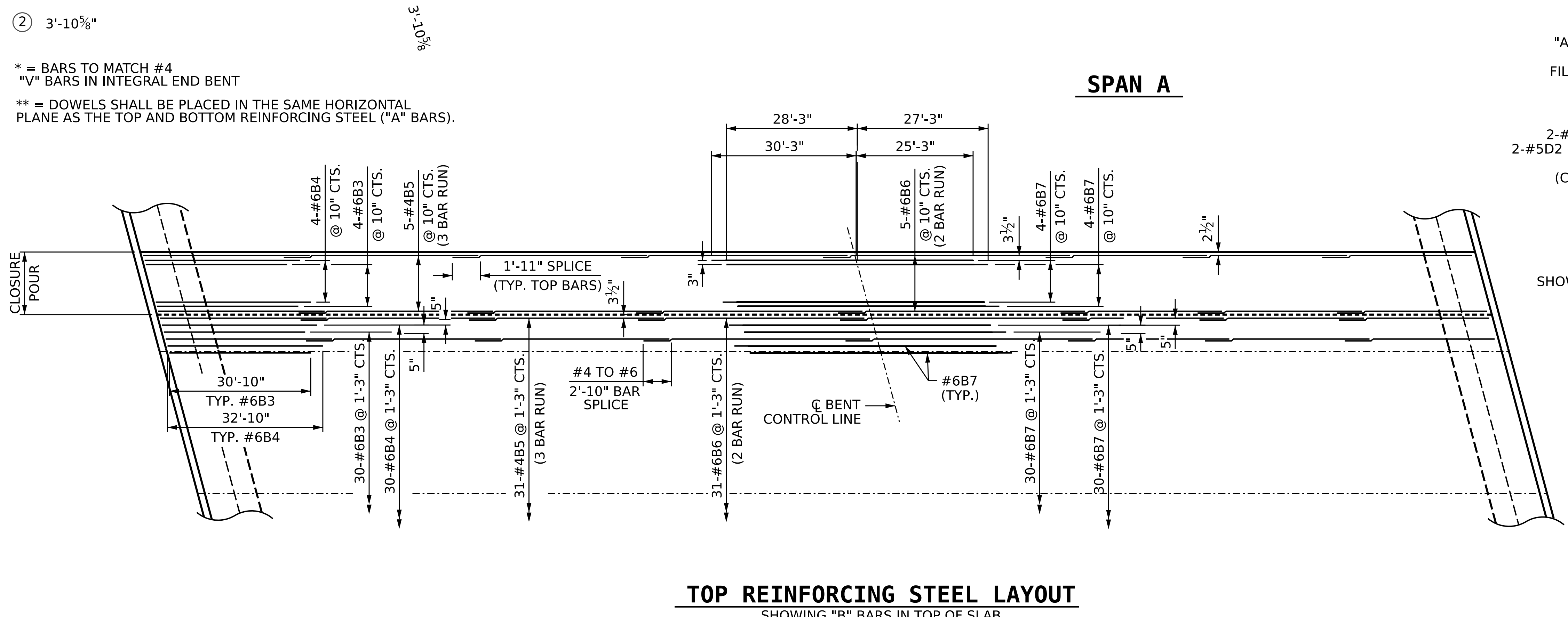
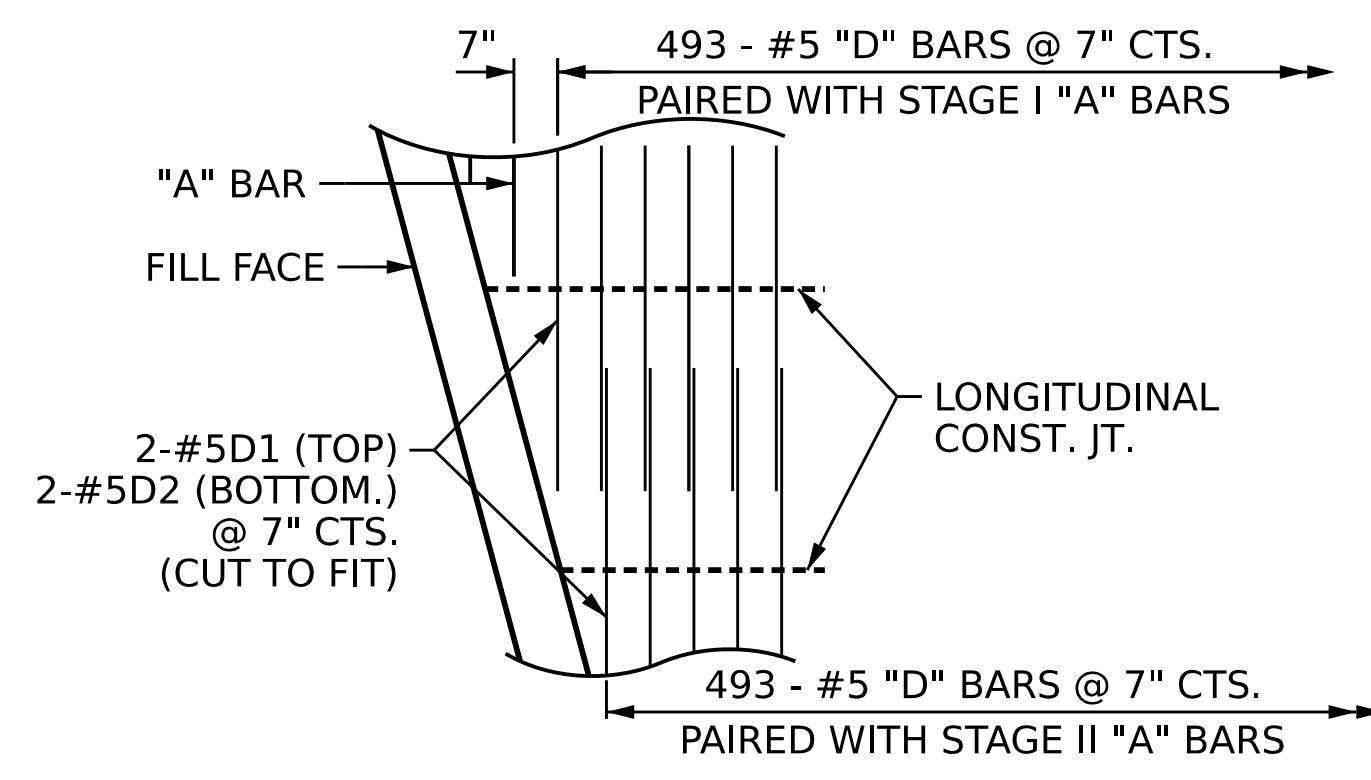


- ① 5-#4B2 @ 10" CTS. BOTTOM OF LINK SLAB (2 BAR RUN) (TYP. EA. BAY)
- ② 3'-10 5/8"

\* = BARS TO MATCH #4  
 "V" BARS IN INTEGRAL END BENT  
 \*\* = DOWELS SHALL BE PLACED IN THE SAME HORIZONTAL PLANE AS THE TOP AND BOTTOM REINFORCING STEEL ("A" BARS).



**TOP REINFORCING STEEL LAYOUT**  
 SHOWING "B" BARS IN TOP OF SLAB  
 (NOT DRAWN TO SCALE)



**DETAIL B**  
 SHOWING DECK REINFORCEMENT "D" BARS IN CLOSURE POUR AT END BENT

PROJECT NO. **B-4442**  
**BUNCOMBE** COUNTY  
 STATION: **315+72.39 -L-**  
 SHEET 3 OF 6

**AECOM**  
AECOM TECHNICAL SERVICES OF NC, INC.  
 5430 WADE PARK BOULEVARD, SUITE 200  
 RALEIGH, NC 27607  
 (919) 854-6200 www.aecom.com  
 AECOM License No. F02842

8/17/2022

STATE OF NORTH CAROLINA  
 DEPARTMENT OF TRANSPORTATION  
 RALEIGH

**SUPERSTRUCTURE**

**PLAN OF SPAN A  
 STAGE II  
 CONSTRUCTION**

REVISIONS						SHEET NO. S-15 TOTAL SHEETS 58
NO.	BY:	DATE:	NO.	BY:	DATE:	
1			3			
2			4			

DRAWN BY: M.L. CATER DATE: 05/2022  
 CHECKED BY: D.S. TUTTLE DATE: 05/2022  
 DESIGN ENGINEER OF RECORD: J.E. SLOAN DATE: 05/2022

DOCUMENT NOT CONSIDERED  
 FINAL UNLESS ALL  
 SIGNATURES COMPLETED