

**GRADE DATA -L-**

PI = 309+00.00  
EL = 2,041.59'  
VC = 930'  
K = 182

**HORIZONTAL CURVE DATA -L-**

PI Sta. 309+05.24 Δ = 2°06'38.5" (RT) D = 0°23'42.5" L = 534.16' T = 267.11' R = 14,500.00' SE = NC V = 70 MPH	PI Sta. 322+03.75 Δ = 2°39'17.1" (RT) D = 0°23'42.5" L = 671.84' T = 335.98' R = 14,500.00' SE = NC V = 70 MPH
---	---

**HORIZONTAL CURVE DATA -Y9-**

PI Sta. 15+20.20  
Δ = 27°32'47.3" (LT)  
D = 13°01'18.4"  
L = 211.54'  
T = 107.86'  
R = 440.00'

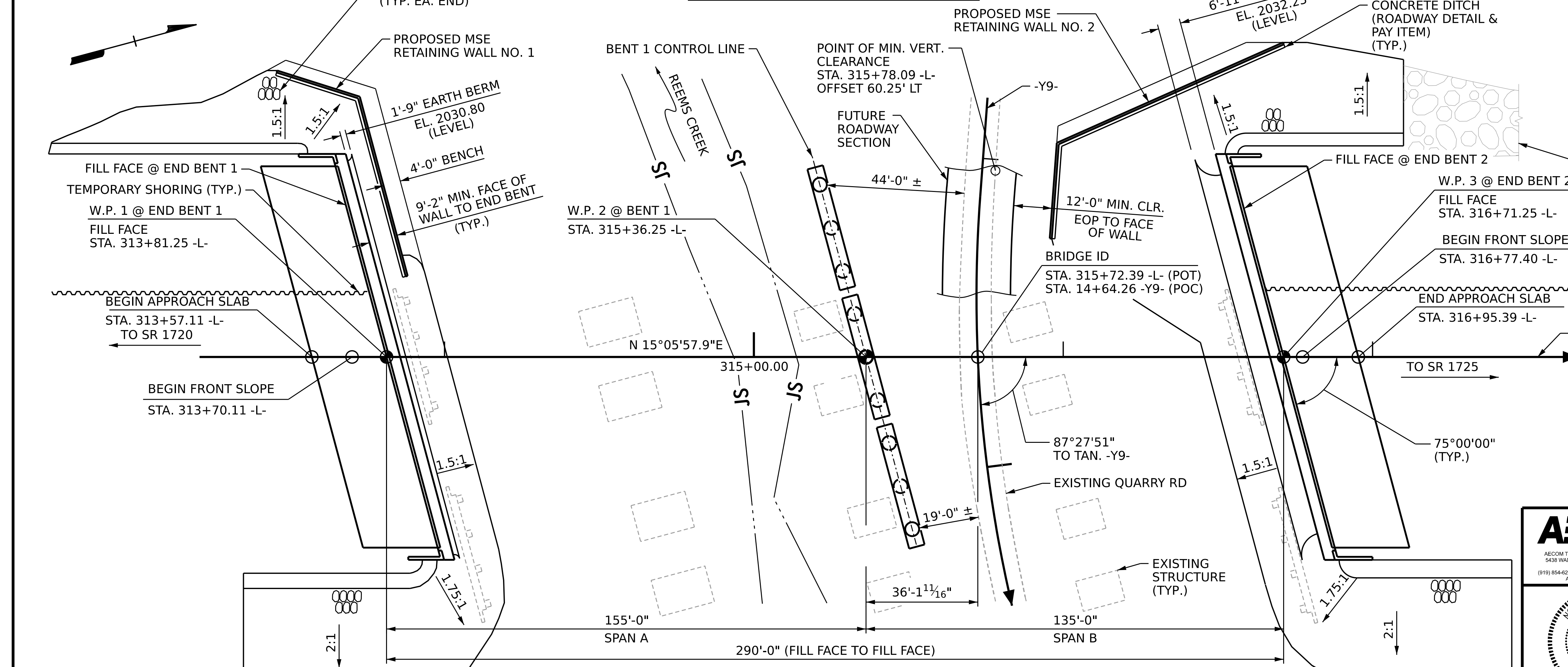
**HYDROGRAPHIC DATA**

DESIGN DISCHARGE . . . . . = 5,830 CFS  
 FREQUENCY OF DESIGN FLOOD . . . . . = 50 YR  
 DESIGN HIGH WATER ELEVATION . . . . . = 1,987.7 FT.  
 DRAINAGE AREA . . . . . = 35.2 SQ. MI.  
 BASE DISCHARGE (Q100) . . . . . = 6,970 CFS  
 BASE HIGH WATER ELEVATION . . . . . = 1,988.8 FT.

**OVERTOPPING FLOOD DATA**

OVERTOPPING DISCHARGE . . . . . = 149,500 CFS  
 FREQUENCY OF OVERTOPPING FLOOD . . . . . = 500+ YR  
 OVERTOPPING FLOOD ELEVATION AT STA. 312+74.00 . . . . . = 2,050.9 FT.

**SECTION ALONG -L-**



**PLAN**  
(DRILLED PIERS AND PILES NOT SHOWN FOR CLARITY)

DRAWN BY : D.R. DRUM DATE : 03/2022  
 CHECKED BY : D.S. TUTTLE DATE : 05/2022  
 DESIGN ENGINEER OF RECORD: J.E. SLOAN DATE : 05/2022

DOCUMENT NOT CONSIDERED FINAL UNLESS ALL SIGNATURES COMPLETED

**AECOM**  
AECOM TECHNICAL SERVICES OF NC, INC.  
 5430 WADE PARK BOULEVARD, SUITE 200  
 RALEIGH, NC 27607  
 (919) 854-6200 www.aecom.com  
 AECOM License No. F02842

8/17/2022  
 SEAL 035062  
 JOHN E. SLOAN  
 ENGINEER

STATE OF NORTH CAROLINA  
 DEPARTMENT OF TRANSPORTATION  
 RALEIGH

**GENERAL DRAWING**  
 FOR BRIDGE ON US 19/US 23/US 25/US 70/FUTURE I-26  
 OVER REEMS CREEK  
 BETWEEN SR 1720 & SR 1725

REVISIONS						SHEET NO.
NO.	BY:	DATE:	NO.	BY:	DATE:	S-01
1			3			TOTAL SHEETS 58
2			4			