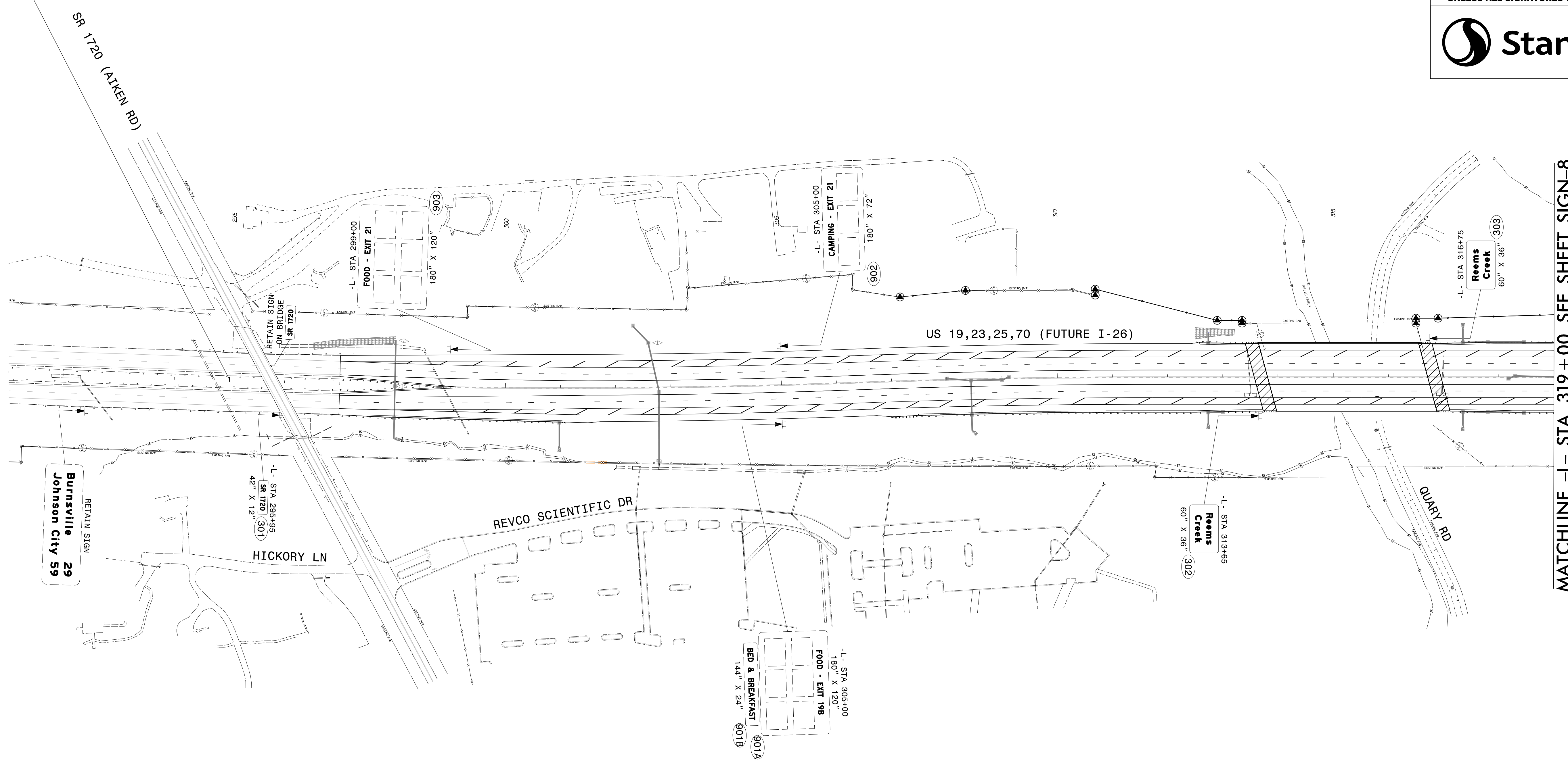


PROJECT NAME	SHEET NO.
B-4442	SIGN-7
APPROVED: <i>Betsy L. Watson</i>	
DATE: 6/9/2022	
SEAL	
DOCUMENT NOT CONSIDERED FINAL UNLESS ALL SIGNATURES COMPLETED	

BEGIN STATE SIGNING PLAN
B-4442 -L- STA. 295+00



MATCHLINE -L- STA 319+00 SEE SHEET SIGN-8

PROPOSED SIGNING
US 19,23,25,70 (FUTURE I-26)
-L- STA 291+00 TO 319+00

\$\$\$\$\$SYTIME\$\$\$\$\$
 \$\$\$\$\$\$DGN\$\$\$\$\$
 \$\$\$\$\$\$USERNAME\$\$\$\$\$