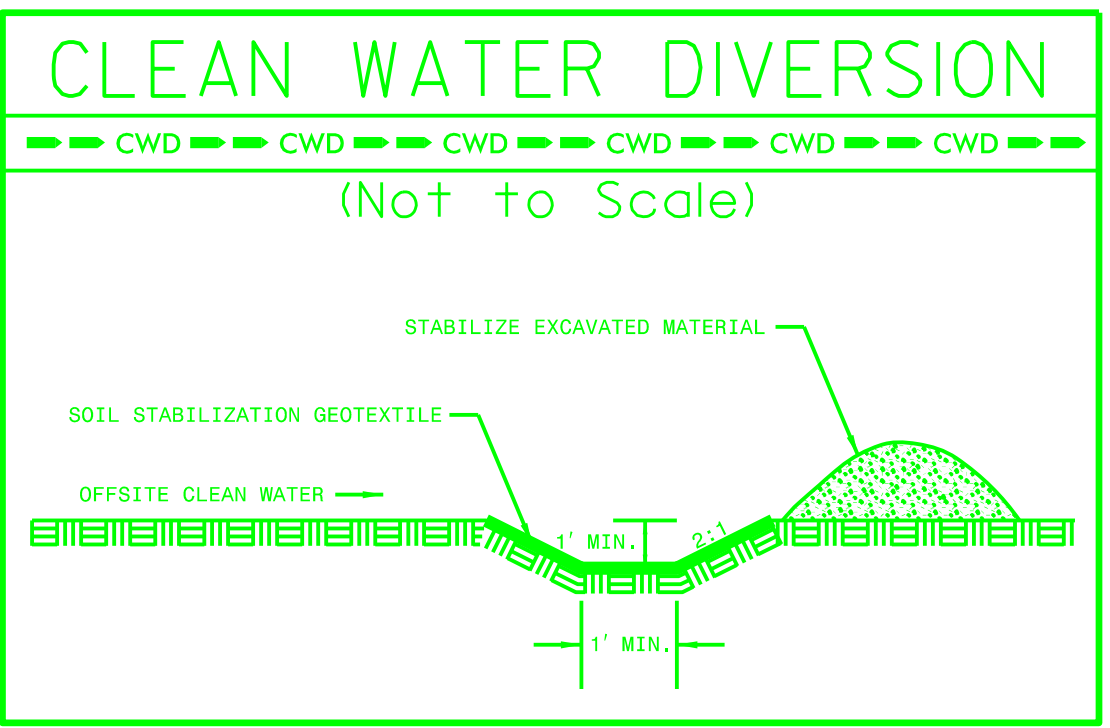


Place Matting for Erosion Control on Slope as Work Allows.
 Sta. 317+00 RT to Sta. 321+00 RT
 Sta. 324+50 RT to Sta. 332+11 RT
 Sta. 317+00 LT to Sta. 332+11 LT

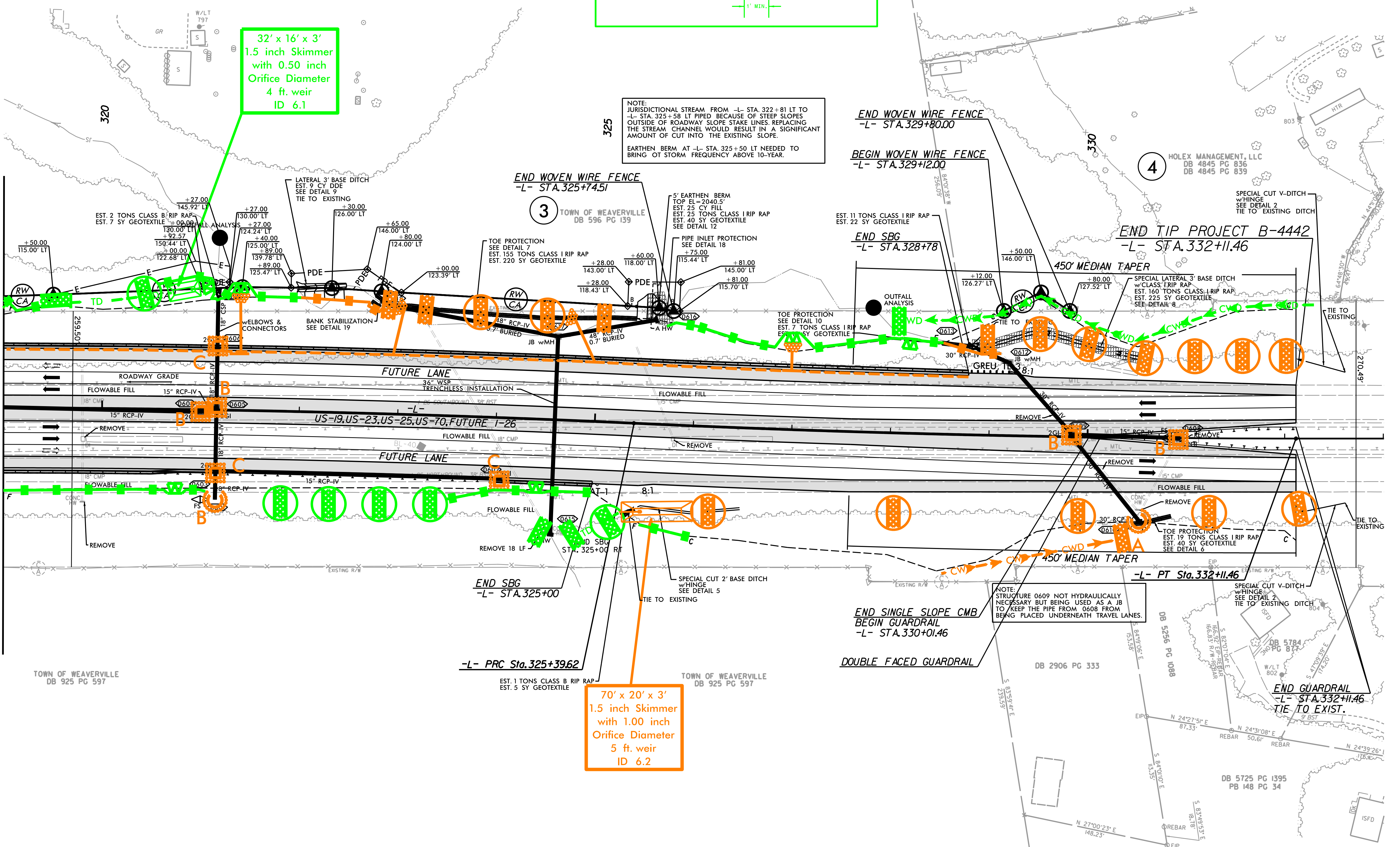
NOTE: UTILIZE FABRIC INSERT INLET PROTECTION DEVICES IN LIEU OF ROCK INLET SEDIMENT TRAPS TYPE C IN AREAS WHERE WATER MAY POND ON ROAD OPEN TO LIVE TRAFFIC.



32' x 16' x 3'
 1.5 inch Skimmer
 with 0.50 inch
 Orifice Diameter
 4 ft. weir
 ID 6.1

NOTE: JURISDICTIONAL STREAM FROM -L- STA. 322+81 LT TO -L- STA. 325+58 LT PIPED BECAUSE OF STEEP SLOPES OUTSIDE OF ROADWAY SLOPE STAKE LINES. REPLACING THE STREAM CHANNEL WOULD RESULT IN A SIGNIFICANT AMOUNT OF CUT INTO THE EXISTING SLOPE.
 EARTHEN BERM AT -L- STA. 325+50 LT NEEDED TO BRING OT STORM FREQUENCY ABOVE 10-YEAR.

MATCHLINE -L- STA 319+00 SEE SHEET EC-08



70' x 20' x 3'
 1.5 inch Skimmer
 with 1.00 inch
 Orifice Diameter
 5 ft. weir
 ID 6.2

5/14/2019 9:50:25 AM 09480-B-4442-09-Const-06.dgn