

Location and Surveys



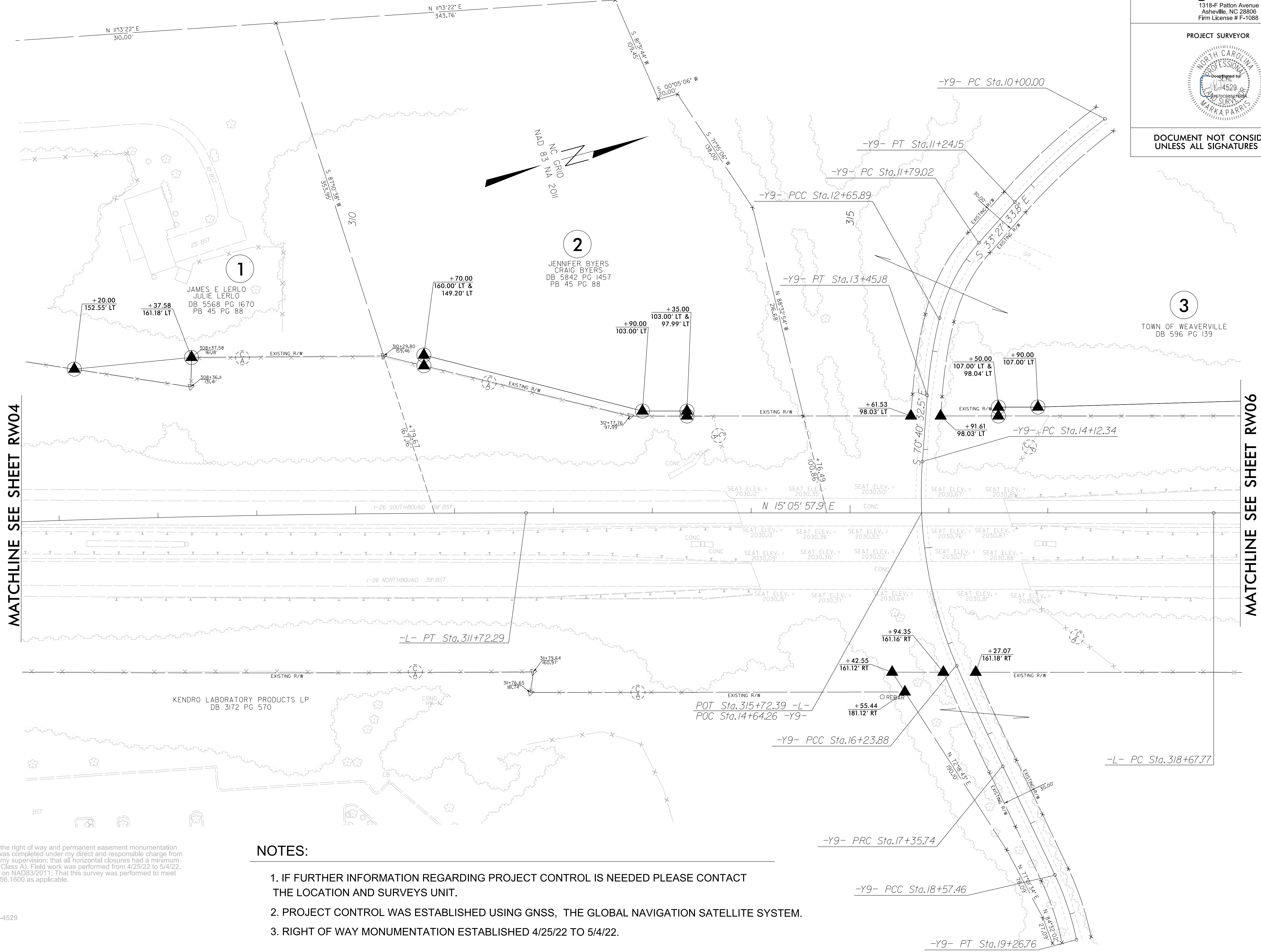
1318-F Patton Avenue  
Asheville, NC 28806  
Firm License # F-1088

PROJECT SURVEYOR



DOCUMENT NOT CONSIDERED FINAL  
UNLESS ALL SIGNATURES COMPLETED

-L-		-Y9-						
PI Sta 301+69.23 Δ = 3° 42' 25.1" (LT) D = 0' 23' 42.5" L = 938.13' T = 469.23' R = 14,500.00'	PI Sta 309+05.24 Δ = 2° 06' 38.5" (RT) D = 0' 23' 42.5" L = 534.16' T = 267.11' R = 14,500.00'	PI Sta 10+62.29 Δ = 11° 39' 41.1" (LT) D = 9' 23' 33.9" L = 124.15' T = 62.29' R = 610.00'	PI Sta 12+23.32 Δ = 27° 39' 08.4" (LT) D = 3' 49' 51.6" L = 86.87' T = 44.30' R = 180.00'	PI Sta 13+05.63 Δ = 9° 33' 50.3" (LT) D = 12' 03' 44.2" L = 79.29' T = 39.74' R = 475.00'	PI Sta 15+20.20 Δ = 27° 32' 47.3" (LT) D = 13' 01' 18.4" L = 211.54' T = 107.86' R = 440.00'	PI Sta 16+79.82 Δ = 2° 36' 57.4" (LT) D = 2' 20' 19.0" L = 111.86' T = 55.94' R = 2,450.00'	PI Sta 17+96.60 Δ = 0° 38' 53.3" (RT) D = 0' 31' 57.0" L = 121.72' T = 60.86' R = 10,760.00'	PI Sta 18+92.27 Δ = 13° 41' 30.9" (RT) D = 19' 45' 25.8" L = 69.30' T = 34.82' R = 290.00'



MATCHLINE SEE SHEET RW04

MATCHLINE SEE SHEET RW06

NOTES:

1. IF FURTHER INFORMATION REGARDING PROJECT CONTROL IS NEEDED PLEASE CONTACT THE LOCATION AND SURVEYS UNIT.
2. PROJECT CONTROL WAS ESTABLISHED USING GNSS, THE GLOBAL NAVIGATION SATELLITE SYSTEM.
3. RIGHT OF WAY MONUMENTATION ESTABLISHED 4/25/22 TO 5/4/22.

I, Mark A. Parris, certify that the right of way and permanent easement monumentation for this project shown herein was completed under my direct and responsible charge from an actual survey made under my supervision; that all horizontal closures had a minimum ratio of precision of 1:10,000 (Class A). Field work was performed from 4/25/22 to 5/4/22, and all coordinates are based on NAD83/2011; That this survey was performed to meet the requirements of 21NCA 56.1600 as applicable.

This 5th day of May, 2022.  
  
 Professional Land Surveyor L-4529

REVISIONS

I:\MAY\_2022\_0929\VA-NC\_150522-16\_b4442\_con\_vam\Survey\To\_Send\B4442\_1s\_RW05.dgn  
 6/2/2022 10:35:53 AM  
 jgordon