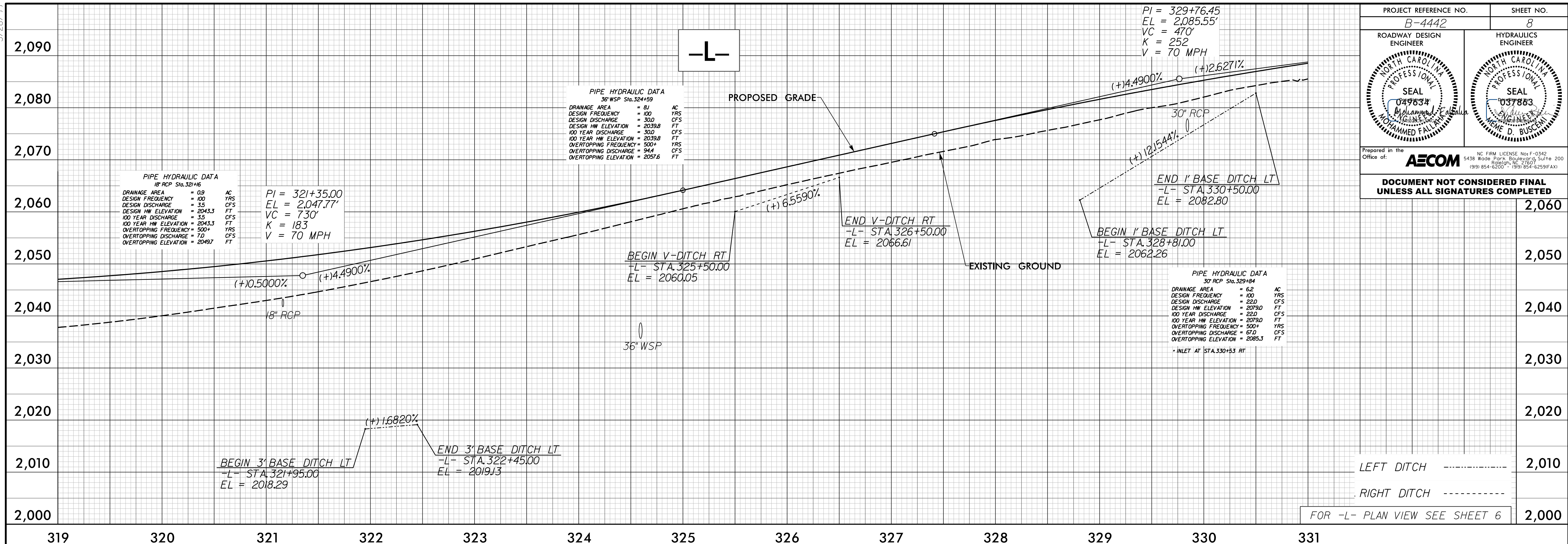


5/28/2022 5:41:22 pm n:\paw-bentley.com\AECOM\DS21_NA_2020\Documents\100480-B-4442_1-26 over- Reems Creek\900-CAD_GIS\910-CAD\70_NCD01_TIP\Roadway\Design\B4442_rdy_pfl_08.dgn



PIPE HYDRAULIC DATA
18" RCP Sta. 321+16

DRAINAGE AREA	= 0.9	AC
DESIGN FREQUENCY	= 100	YRS
DESIGN DISCHARGE	= 3.5	CFS
DESIGN HW ELEVATION	= 2043.3	FT
100 YEAR DISCHARGE	= 3.5	CFS
100 YEAR HW ELEVATION	= 2043.3	FT
OVERTOPPING FREQUENCY	= 500+	YRS
OVERTOPPING DISCHARGE	= 7.0	CFS
OVERTOPPING ELEVATION	= 2049.7	FT

PI = 321+35.00
EL = 2,047.77'
VC = 730'
K = 183
V = 70 MPH

PIPE HYDRAULIC DATA
36" WSP Sta. 324+59

DRAINAGE AREA	= 81	AC
DESIGN FREQUENCY	= 100	YRS
DESIGN DISCHARGE	= 300	CFS
DESIGN HW ELEVATION	= 2039.8	FT
100 YEAR DISCHARGE	= 300	CFS
100 YEAR HW ELEVATION	= 2039.8	FT
OVERTOPPING FREQUENCY	= 500+	YRS
OVERTOPPING DISCHARGE	= 944	CFS
OVERTOPPING ELEVATION	= 2057.6	FT

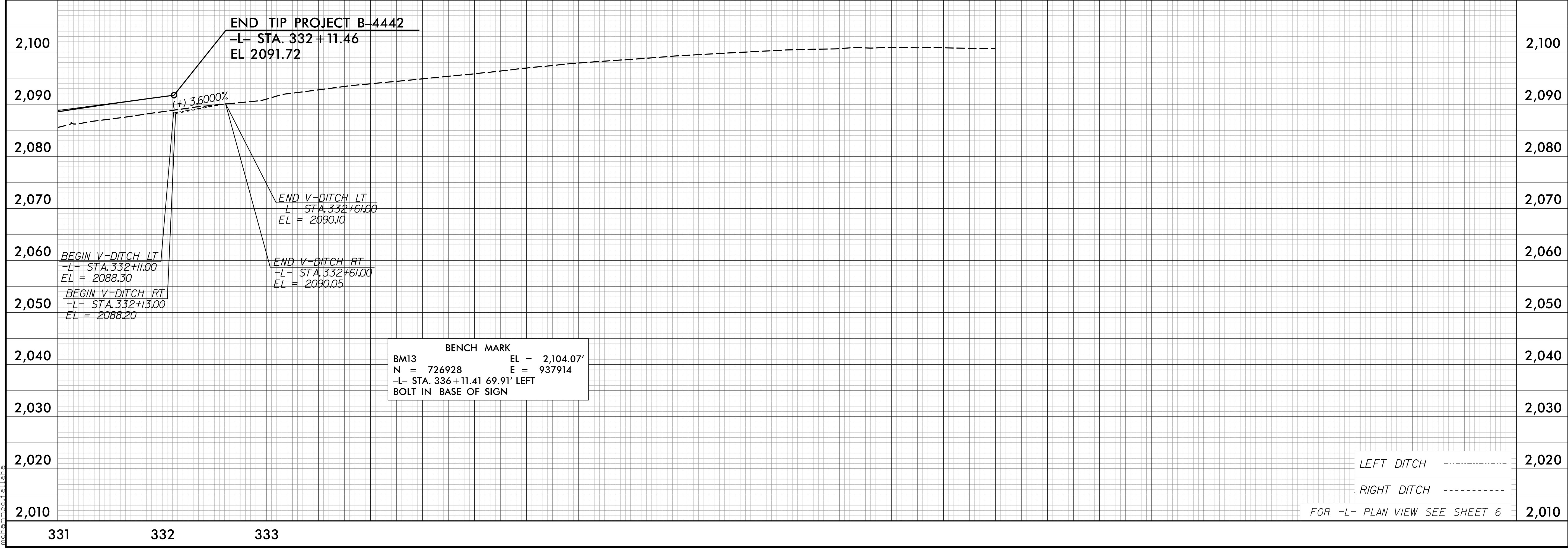
PI = 329+76.45
EL = 2,085.55'
VC = 470'
K = 252
V = 70 MPH

PIPE HYDRAULIC DATA
30" RCP Sta. 329+84

DRAINAGE AREA	= 62	AC
DESIGN FREQUENCY	= 100	YRS
DESIGN DISCHARGE	= 22.0	CFS
DESIGN HW ELEVATION	= 2079.0	FT
100 YEAR DISCHARGE	= 22.0	CFS
100 YEAR HW ELEVATION	= 2079.0	FT
OVERTOPPING FREQUENCY	= 500+	YRS
OVERTOPPING DISCHARGE	= 67.0	CFS
OVERTOPPING ELEVATION	= 2085.3	FT

* INLET AT STA. 330+83 RT

PROJECT REFERENCE NO. B-4442	SHEET NO. 8
ROADWAY DESIGN ENGINEER MOHAMMED FALLAH	HYDRAULICS ENGINEER MOHAMMED FALLAH
Professional Seal: 049634	Professional Seal: 037883
Prepared in the Office of: AECOM	
DOCUMENT NOT CONSIDERED FINAL UNLESS ALL SIGNATURES COMPLETED	



BENCH MARK
BM13 EL = 2,104.07'
N = 726928 E = 937914
-L- STA. 336 + 11.41 69.91' LEFT
BOLT IN BASE OF SIGN

LEFT DITCH -----
RIGHT DITCH -----
FOR -L- PLAN VIEW SEE SHEET 6