
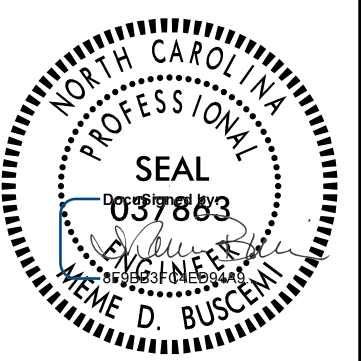
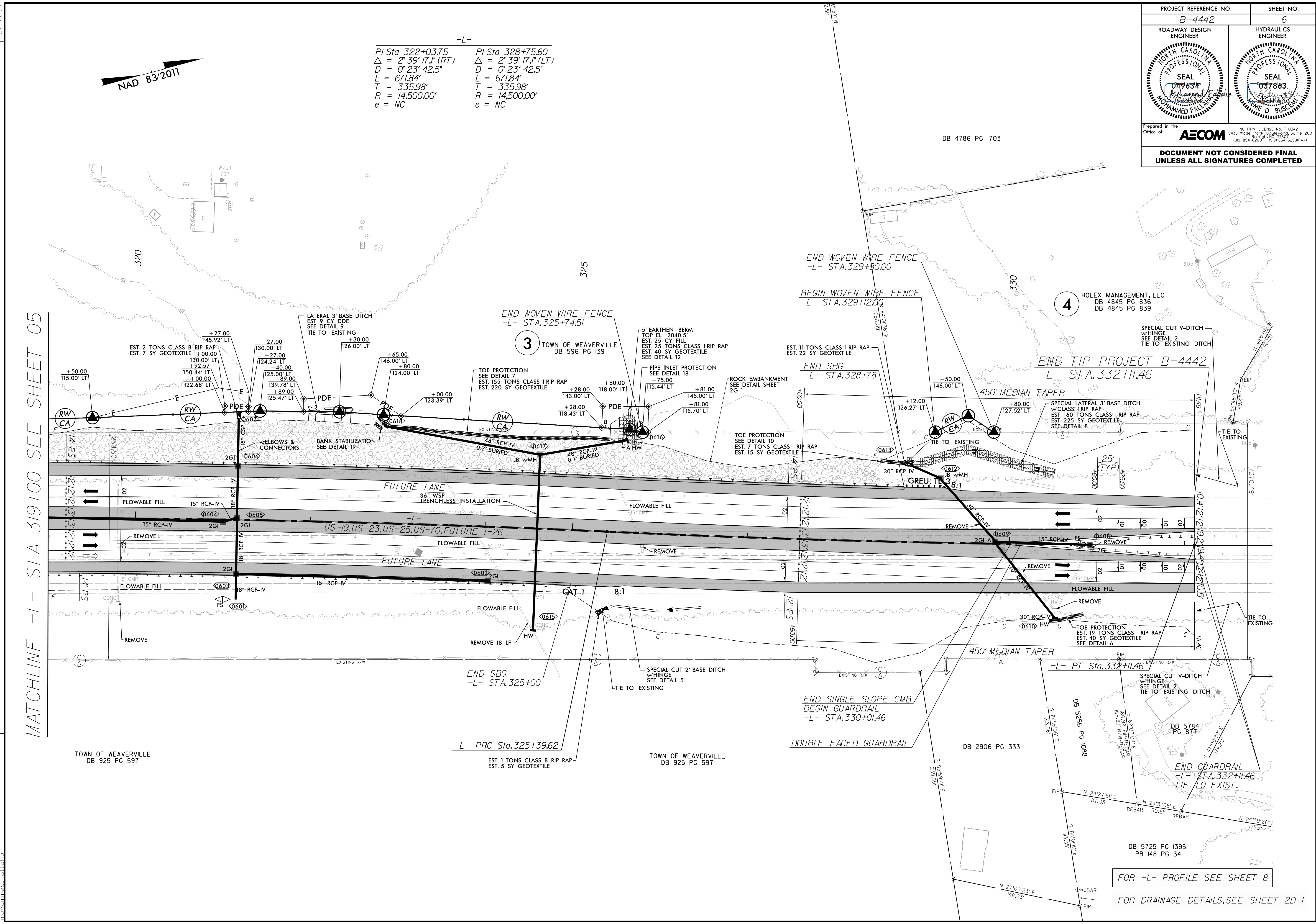
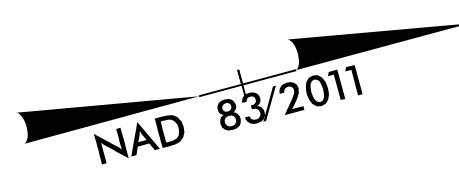


PROJECT REFERENCE NO. B-4442	SHEET NO. 6
ROADWAY DESIGN ENGINEER 	HYDRAULICS ENGINEER 
Prepared in the Office of: AECOM	
<small>NC FIRM LICENSE No. F-0342 5438 Wade Park, Boulevard Suite 200 Charlotte, NC 28217 (919) 854-6200 • (919) 854-6259 (FAX)</small>	
DOCUMENT NOT CONSIDERED FINAL UNLESS ALL SIGNATURES COMPLETED	



-L-

PI Sta 322+03.75 Δ = 2° 39' 17.1" (RT) D = 0° 23' 42.5" L = 671.84' T = 335.98' R = 14,500.00' e = NC	PI Sta 328+75.60 Δ = 2° 39' 17.1" (LT) D = 0° 23' 42.5" L = 671.84' T = 335.98' R = 14,500.00' e = NC
-------------------------------------------------------------------------------------------------------------------------	-------------------------------------------------------------------------------------------------------------------------



MATCHLINE -L- STA 319+00 SEE SHEET 05

REVISIONS

6/28/2022
p:\a\acomm\nc\pawbentley\com\AECOM_DS21_NA_2020\Documents\100480-B-4442_I-26_over_Reems_Creek\900-CAD_GIS\910_CAD\Y0_NCD01_IIP_Roadway\Design_B4442_cdy.psb_06.dgn
Mohammed Fallouh

FOR -L- PROFILE SEE SHEET 8
FOR DRAINAGE DETAILS, SEE SHEET 2D-1