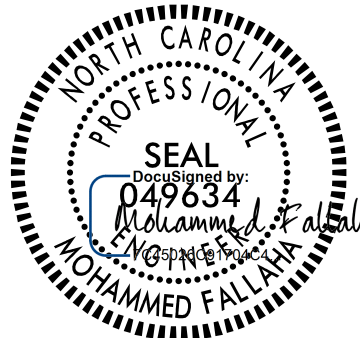
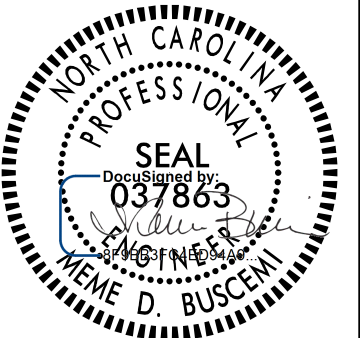


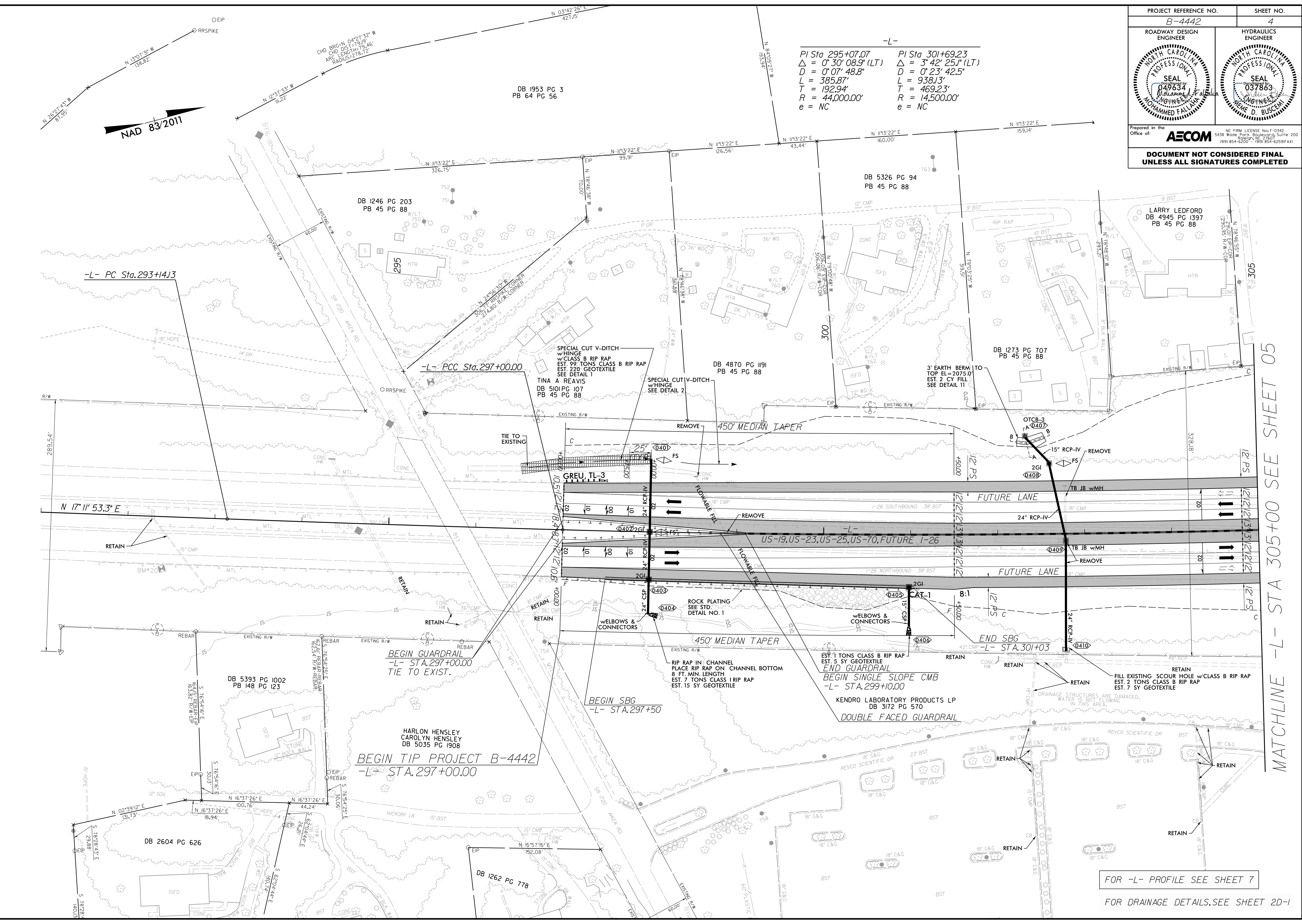
8/17/19

PROJECT REFERENCE NO. B-4442		SHEET NO. 4	
ROADWAY DESIGN ENGINEER		HYDRAULICS ENGINEER	
			
Prepared in the Office of: AECOM			
NC FIRM LICENSE No. F-0342 5438 Wade Park Boulevard, Suite 200 Raleigh, NC 27617 (919) 854-6200 • (919) 854-6259 (FAX)			
DOCUMENT NOT CONSIDERED FINAL UNLESS ALL SIGNATURES COMPLETED			

-L-

PI Sta 295+07.07 $\Delta = 0' 30' 08.9"$ (LT) $D = 0' 07' 48.8"$ $L = 385.87'$ $T = 192.94'$ $R = 44,000.00'$ $e = NC$	PI Sta 301+69.23 $\Delta = 3' 42' 25.1"$ (LT) $D = 0' 23' 42.5"$ $L = 938.13'$ $T = 469.23'$ $R = 14,500.00'$ $e = NC$
--	--

REVISIONS
 8/19/2022
 Sw: [unclear] p: [unclear] b: [unclear] e: [unclear] c: [unclear] m: [unclear] a: [unclear]
 6/29/2022
 Sw: [unclear] p: [unclear] b: [unclear] e: [unclear] c: [unclear] m: [unclear] a: [unclear]
 8/17/19



MATCHLINE -L- STA 305+00 SEE SHEET 05

FOR -L- PROFILE SEE SHEET 7
 FOR DRAINAGE DETAILS, SEE SHEET 2D-1