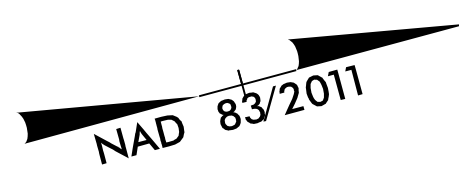


8/17/19

PROJECT REFERENCE NO. B-4442	SHEET NO. 2B-6
ROADWAY DESIGN ENGINEER	HYDRAULICS ENGINEER
Prepared in the Office of:	NC FIRM LICENSE No. F-0342 5438 Wade Street, Boulevard Suite 200 Charlotte, NC 28217 (919) 854-6200 • (919) 854-6259 (FAX)
AECOM	
DOCUMENT NOT CONSIDERED FINAL UNLESS ALL SIGNATURES COMPLETED	



-EBL_DET-

PI Sta 323+96.91	PI Sta 331+18.66
$\Delta = 3^{\circ} 24' 15.5" (RT)$	$\Delta = 3^{\circ} 24' 15.5" (LT)$
$D = 0^{\circ} 23' 38.4"$	$D = 0^{\circ} 35' 14.7"$
$L = 864.03'$	$L = 579.55'$
$T = 432.14'$	$T = 289.86'$
$R = 14,542.00'$	$R = 9,754.00'$
SE = NC	SE = NC
V = 55 MPH	V = 55 MPH

-WBL_DET-

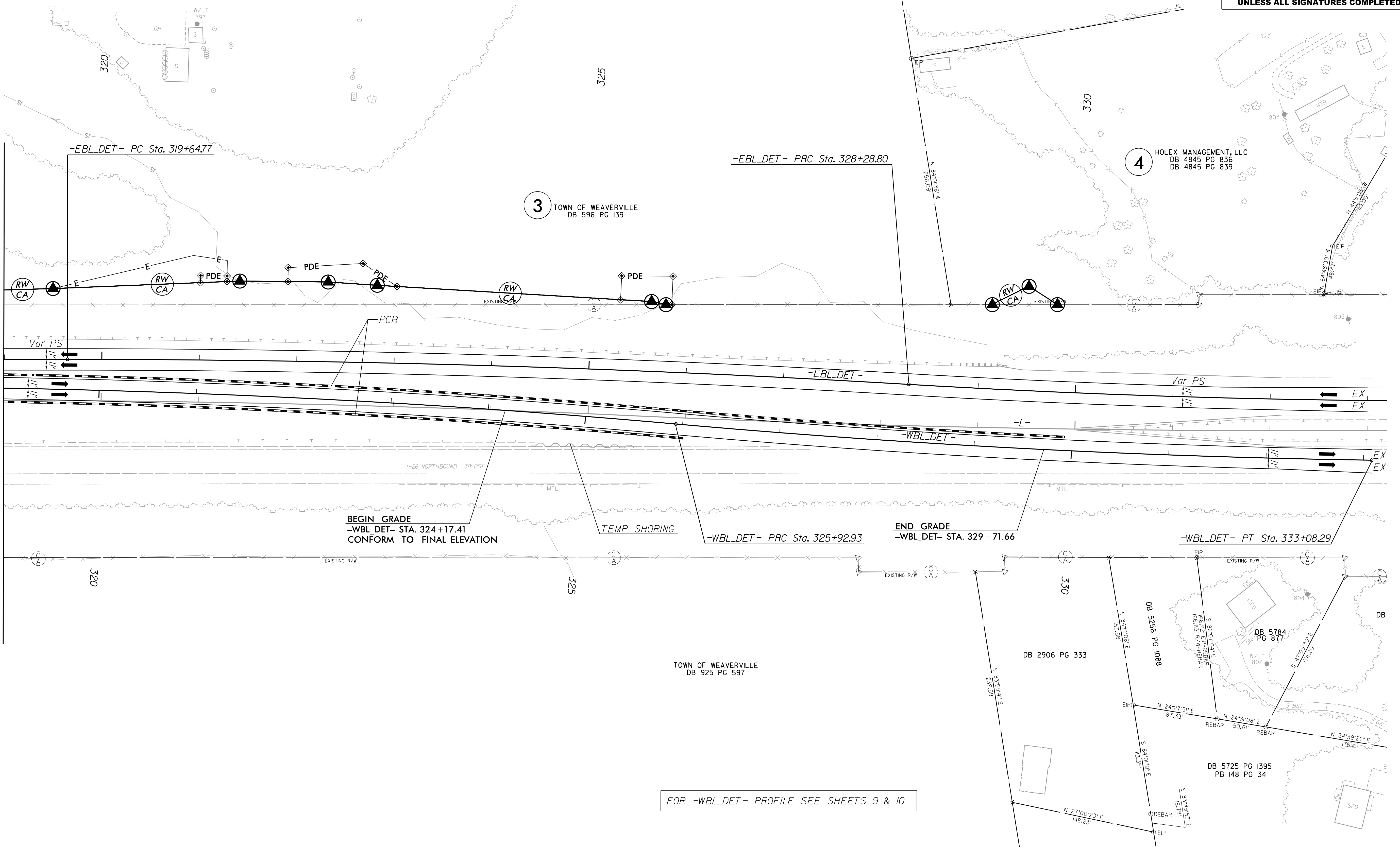
-WBL_DET-

PI Sta 321+61.57	PI Sta 329+50.77
$\Delta = 5^{\circ} 05' 19.6" (RT)$	$\Delta = 4^{\circ} 13' 00.5" (LT)$
$D = 0^{\circ} 35' 22.1"$	$D = 0^{\circ} 35' 22.1"$
$L = 863.29'$	$L = 715.36'$
$T = 431.93'$	$T = 357.84'$
$R = 9,720.00'$	$R = 9,719.97'$
SE = NC	SE = NC
V = 55 MPH	V = 55 MPH

DB 4786 PG 1703

NOTES:
FOR TRANSPORTATION MANAGEMENT PLAN, SEE SHEET TMP-1 THRU TMP-16.
ALL DRAINAGE IS FINAL DURING THE CONSTRUCTION OF THE DETOURS.

MATCHLINE -L- STA 319+00 SEE SHEET 2B-5



BEGIN GRADE
-WBL_DET- STA. 324+17.41
CONFORM TO FINAL ELEVATION

TEMP SHORING

END GRADE
-WBL_DET- STA. 329+71.66

-WBL_DET- PT Sta. 333+08.29

FOR -WBL_DET- PROFILE SEE SHEETS 9 & 10

REVISIONS

5/12/2022
 P:\sec\m\paw.bentley.com\AECOM_DS21_NA_2020\Documents\M100480-B-4442_I-26_over_Reems_Creek\900-CAD_GIS\910_CAD\Y0_NCD01_TIP_Roadway_Design_B4442_cdu.psh_02B-6.dgn
 Mohammed Fallouh