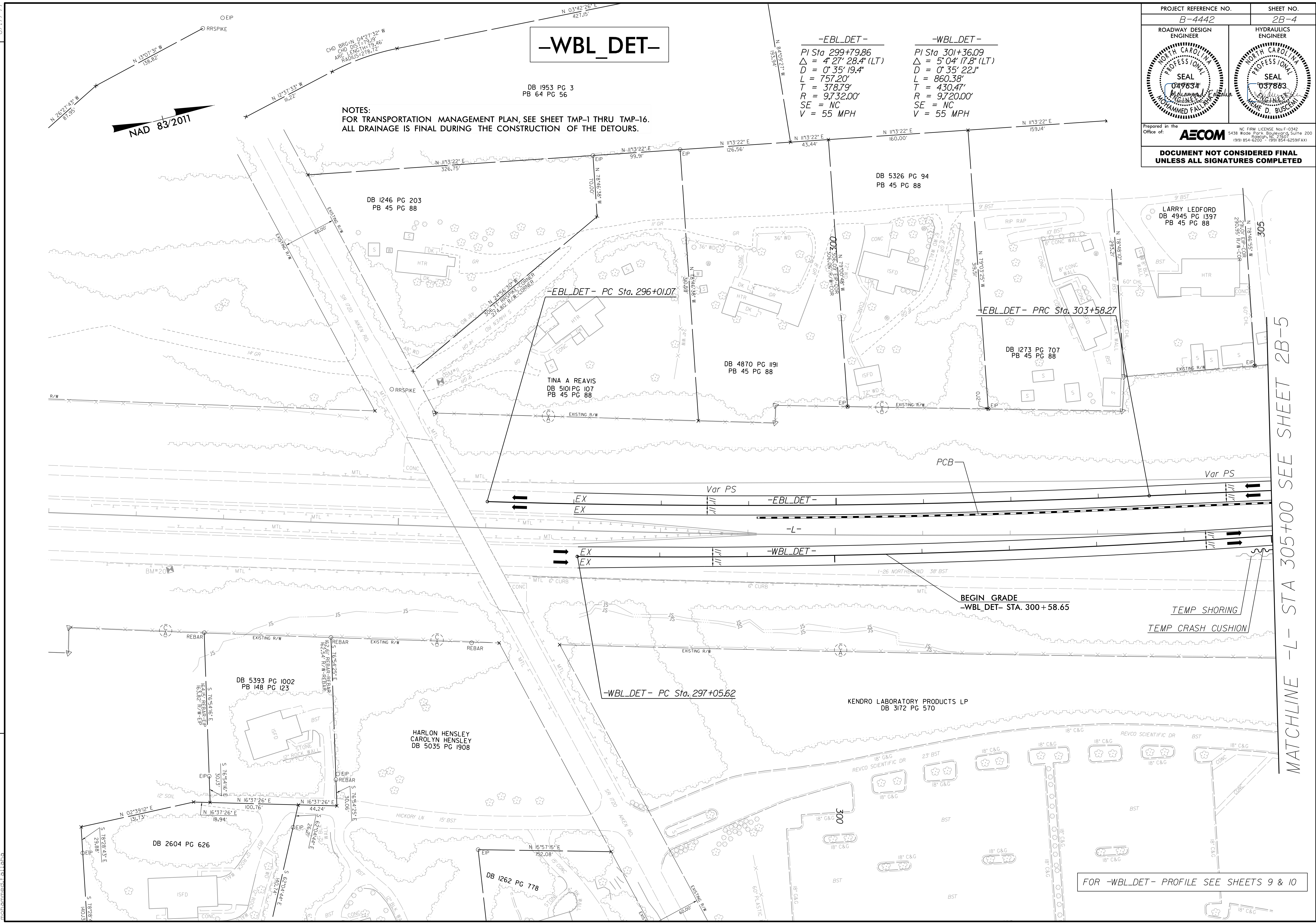


PROJECT REFERENCE NO. B-4442	SHEET NO. 2B-4
ROADWAY DESIGN ENGINEER	HYDRAULICS ENGINEER
Prepared in the Office of: AECOM <small>NC FIRM LICENSE NO. F-0342 5438 Wade Park, Boulevard, Suite 200 Charlotte, NC 28217 (919) 854-6200 • (919) 854-6259 (FAX)</small>	
DOCUMENT NOT CONSIDERED FINAL UNLESS ALL SIGNATURES COMPLETED	



NOTES:
FOR TRANSPORTATION MANAGEMENT PLAN, SEE SHEET TMP-1 THRU TMP-16.
ALL DRAINAGE IS FINAL DURING THE CONSTRUCTION OF THE DETOURS.

-EBL_DET-
 PI Sta 299+79.86
 $\Delta = 4' 27'' 28.4''$ (LT)
 $D = 0' 35'' 19.4''$
 $L = 757.20'$
 $T = 378.79'$
 $R = 9,732.00'$
 $SE = NC$
 $V = 55$ MPH

-WBL_DET-
 PI Sta 301+36.09
 $\Delta = 5' 04'' 17.8''$ (LT)
 $D = 0' 35'' 22.1''$
 $L = 860.38'$
 $T = 430.47'$
 $R = 9,720.00'$
 $SE = NC$
 $V = 55$ MPH

MATCHLINE -L- STA 305+00 SEE SHEET 2B-5

FOR -WBL_DET- PROFILE SEE SHEETS 9 & 10

REVISIONS
 5/12/2022
 P:\1\sec\m\p\w\hensley\com\AECOM_DS21_NA_2020\Documents\M100480-B-4442_I-26_over_Reems_Creek_900-CAD_GIS\910_CAD\70_NCDOT_IIP_Roadway\Design\B4442_cdu_psh_02B-4.dgn
 Mohammed Fallouh