

8/17/99

PROJECT REFERENCE NO. B-4442		SHEET NO. 2B-3	
ROADWAY DESIGN ENGINEER		HYDRAULICS ENGINEER	
Prepared in the Office of:		<b>AECOM</b> <small>NC FIRM LICENSE No. F-0342        5438 Wade Street, Boulevard Suite 200        Raleigh, NC 27607        (919) 854-6200 • (919) 854-6259 (FAX)</small>	
<b>DOCUMENT NOT CONSIDERED FINAL UNLESS ALL SIGNATURES COMPLETED</b>			

# -EBL\_DET-

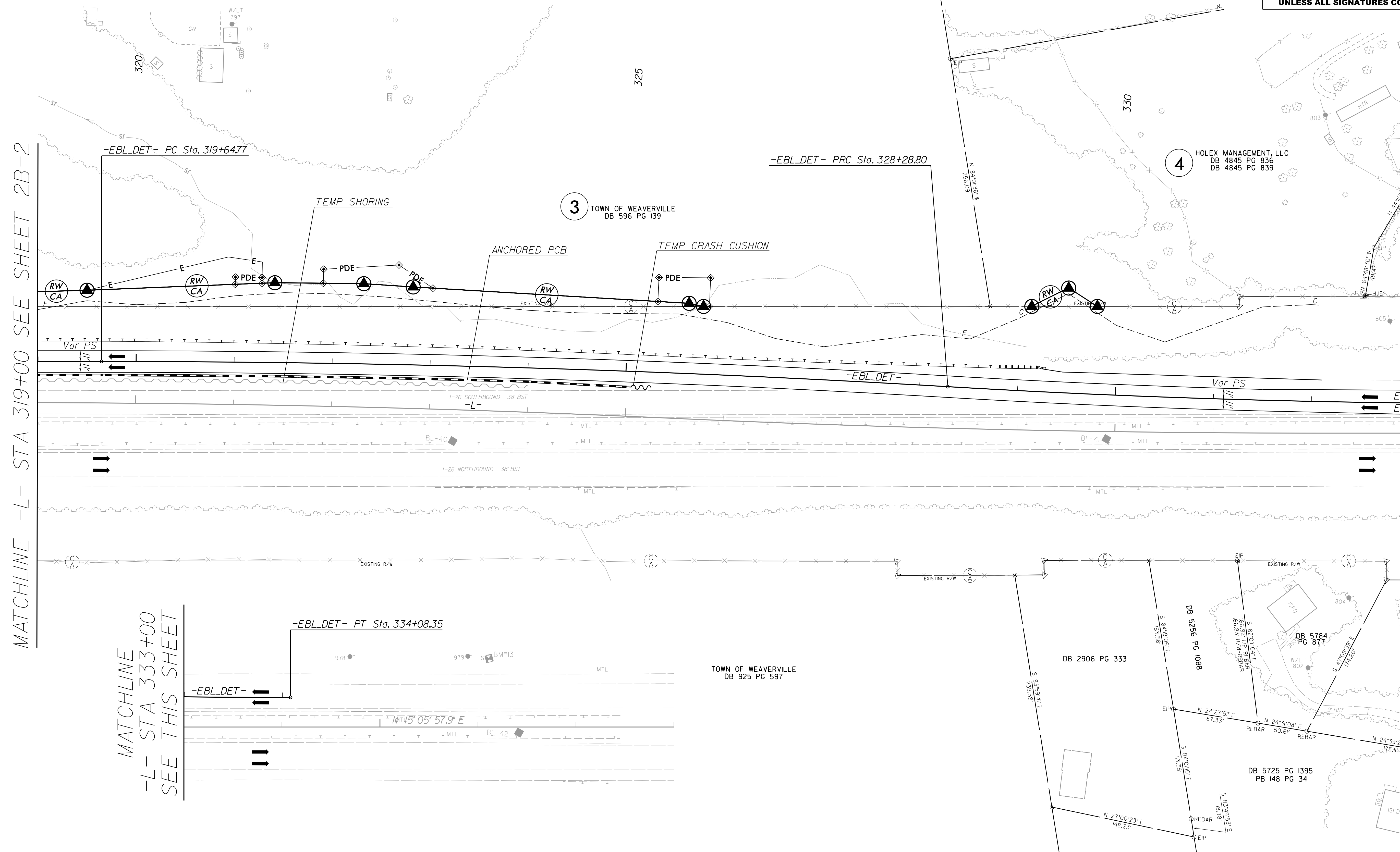
-EBL\_DET-

PI Sta 323+96.91	PI Sta 331+18.66
$\Delta = 3^{\circ} 24' 15.5" (RT)$	$\Delta = 3^{\circ} 24' 15.5" (LT)$
$D = 0' 23' 38.4"$	$D = 0' 35' 14.7"$
$L = 864.03'$	$L = 579.55'$
$T = 432.14'$	$T = 289.86'$
$R = 14,542.00'$	$R = 9,754.00'$
SE = NC	SE = NC
V = 55 MPH	V = 55 MPH

NOTES:  
 FOR TRANSPORTATION MANAGEMENT PLAN, SEE SHEET TMP-1 THRU TMP-16.  
 ALL DRAINAGE IS FINAL DURING THE CONSTRUCTION OF THE DETOURS.

MATCHLINE -L- STA 319+00 SEE SHEET 2B-2

MATCHLINE -L- STA 333+00 SEE THIS SHEET



REVISIONS

5/12/2022  
 pak\sec\mng\paw.bentley.com\AECOM\_DS21\_NA\_2020\Documents\M100480-B-4442\_I-26\_over\_Reems\_Creek\900-CAD\_GIS\910\_CAD\Y70\_NCD01\_TIP\Roadway\Design\B4442\_cdu\_psb\_02B-3.dgn  
 Mohammed Fallouh