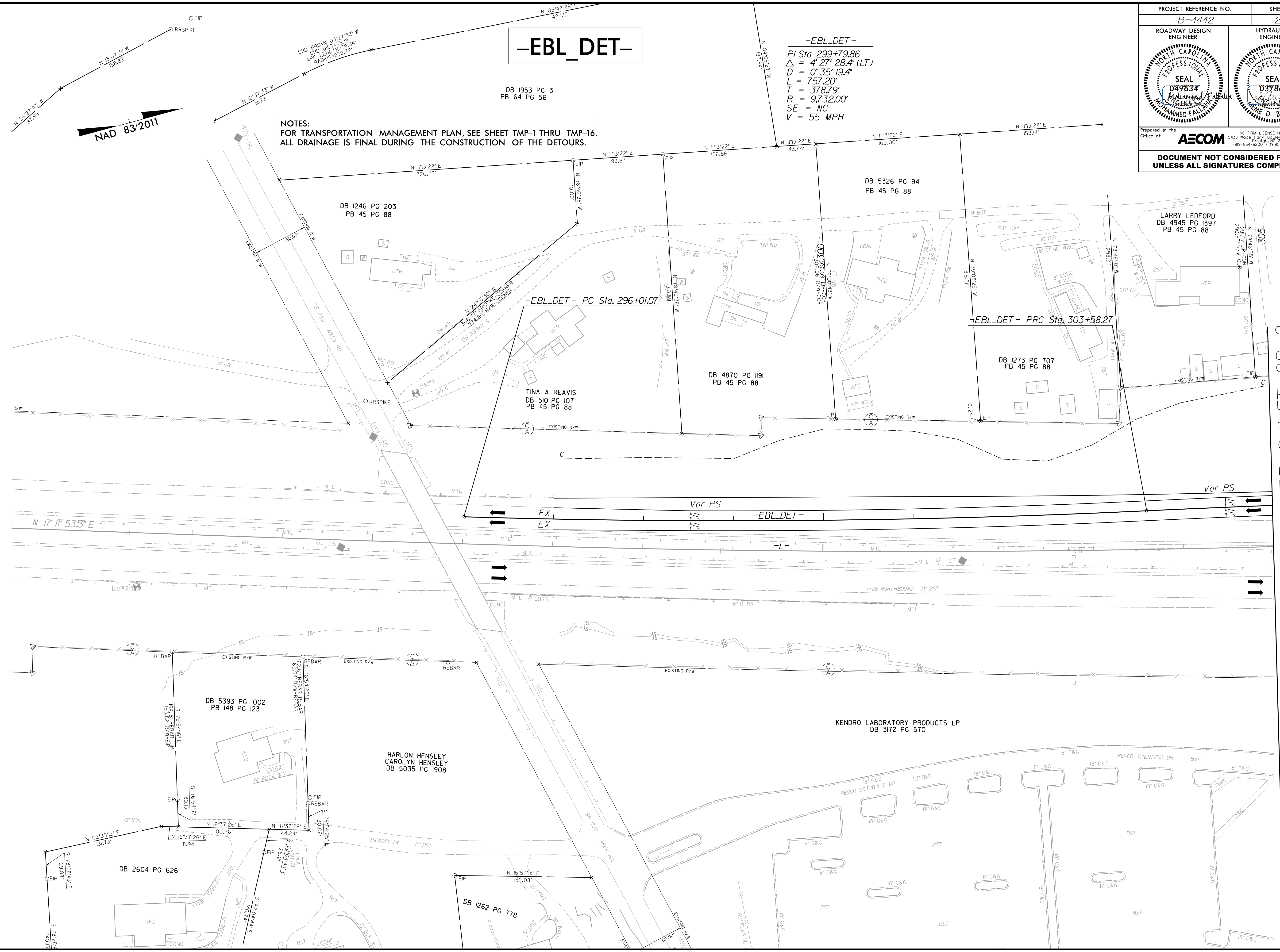


5/12/2022
C:\Users\mohammed.falaha\Documents\1100480-B-4442_I-26_over_Reems_Creek\900-CAD_GIS\910_CAD\70_NCD01_TIP\Roadway\Design\B4442_cdy_rsb_02B-1.dgn
Mohammed Falaha

REVISIONS



-EBL_DET-

-EBL_DET-
 PI Sta 299+79.86
 $\Delta = 4' 27'' 28.4'' (LT)$
 $D = 0' 35'' 19.4''$
 $L = 757.20'$
 $T = 378.79'$
 $R = 9,732.00'$
 $SE = NC$
 $V = 55 MPH$

DB 1953 PG 3
PB 64 PG 56

NOTES:
FOR TRANSPORTATION MANAGEMENT PLAN, SEE SHEET TMP-1 THRU TMP-16.
ALL DRAINAGE IS FINAL DURING THE CONSTRUCTION OF THE DETOURS.

PROJECT REFERENCE NO. B-4442	SHEET NO. 2B-1
ROADWAY DESIGN ENGINEER MOHAMMED FALAHA	HYDRAULICS ENGINEER WAME D. BUSCEMI
Prepared in the Office of: AECOM <small>NC FIRM LICENSE NO. F-0342 5438 Wade Park, Boulevard, Suite 200 Raleigh, NC 27607 (919) 854-6200 • (919) 854-6259(FAX)</small>	
DOCUMENT NOT CONSIDERED FINAL UNLESS ALL SIGNATURES COMPLETED	

MATCHLINE -L- STA 305+00 SEE SHEET 2B-2