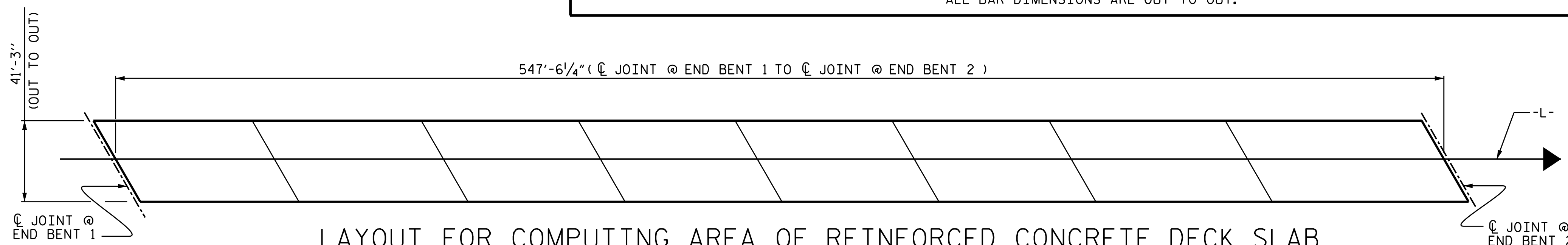
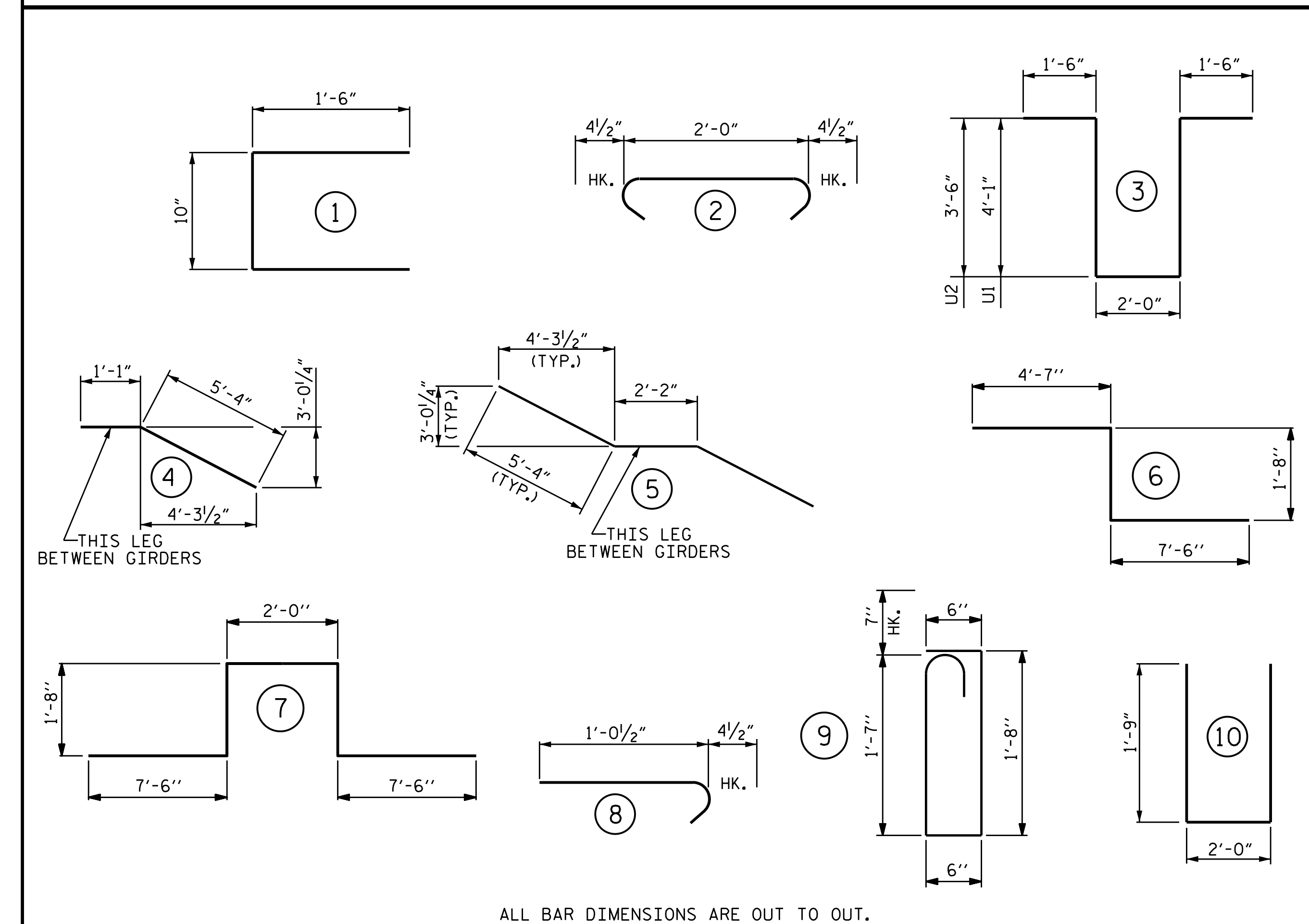


REINFORCING BAR SCHEDULE

BAR No.	SIZE	TYPE	LENGTH	WEIGHT	BAR No.	SIZE	TYPE	LENGTH	WEIGHT	BAR No.	SIZE	TYPE	LENGTH	WEIGHT			
* A1	1047	#5	STR.	40'-11"	44682	A201	2	#5	STR.	39'-11"	83	B1	440	#5	STR.	56'-9"	26044
A2	1047	#5	STR.	40'-11"	44682	A202	2	#5	STR.	39'-1"	82	* B2	58	#4	STR.	22'-5"	869
* A101	2	#5	STR.	39'-11"	83	A203	2	#5	STR.	38'-3"	80	* B3	58	#6	STR.	50'-9"	4421
* A102	2	#5	STR.	39'-1"	82	A204	2	#5	STR.	37'-4"	78	* B4	104	#6	STR.	20'-6"	3202
* A103	2	#5	STR.	38'-3"	80	A205	2	#5	STR.	36'-6"	76	* B5	29	#4	STR.	22'-0"	426
* A104	2	#5	STR.	37'-4"	78	A206	2	#5	STR.	35'-7"	74	* B6	116	#4	STR.	20'-0"	1550
* A105	2	#5	STR.	36'-6"	76	A207	2	#5	STR.	34'-9"	72	* B7	87	#6	STR.	49'-0"	6403
* A106	2	#5	STR.	35'-7"	74	A208	2	#5	STR.	33'-11"	71	* B8	156	#6	STR.	19'-6"	4569
* A107	2	#5	STR.	34'-9"	72	A209	2	#5	STR.	33'-0"	69	* B9	29	#6	STR.	51'-6"	2243
* A108	2	#5	STR.	33'-11"	71	A210	2	#5	STR.	32'-2"	67	* B10	52	#6	STR.	20'-9"	1621
* A109	2	#5	STR.	33'-0"	69	A211	2	#5	STR.	31'-3"	65	* B11	29	#4	STR.	23'-0"	446
* A110	2	#5	STR.	32'-2"	67	A212	2	#5	STR.	30'-5"	63	* B12	29	#6	STR.	55'-8"	2425
* A111	2	#5	STR.	31'-3"	65	A213	2	#5	STR.	29'-7"	62	* B13	52	#6	STR.	23'-0"	1796
* A112	2	#5	STR.	30'-5"	63	A214	2	#5	STR.	28'-8"	60	* B14	58	#4	STR.	27'-0"	1046
* A113	2	#5	STR.	29'-7"	62	A215	2	#5	STR.	27'-10"	58	* G1	2	#5	STR.	47'-3"	99
* A114	2	#5	STR.	28'-8"	60	A216	2	#5	STR.	27'-0"	56	* J1	90	#4	8	1'-5"	85
* A115	2	#5	STR.	27'-10"	58	A217	2	#5	STR.	26'-1"	54	* K1	8	#8	6	13'-9"	294
* A116	2	#5	STR.	27'-0"	56	A218	2	#5	STR.	25'-3"	53	* K2	12	#8	7	20'-4"	651
* A117	2	#5	STR.	26'-1"	54	A219	2	#5	STR.	24'-4"	51	* K3	24	#6	STR.	8'-1"	291
* A118	2	#5	STR.	25'-3"	53	A220	2	#5	STR.	23'-6"	49	K4	70	#4	4	6'-5"	300
* A119	2	#5	STR.	24'-4"	51	A221	2	#5	STR.	22'-8"	47	K5	105	#4	5	12'-10"	900
* A120	2	#5	STR.	23'-6"	49	A222	2	#5	STR.	21'-9"	45	K6	56	#4	STR.	6'-1"	228
* A121	2	#5	STR.	22'-8"	47	A223	2	#5	STR.	20'-11"	44	K7	168	#4	STR.	8'-4"	935
* A122	2	#5	STR.	21'-9"	45	A224	2	#5	STR.	20'-0"	42	K8	56	#4	STR.	8'-1"	302
* A123	2	#5	STR.	20'-11"	44	A225	2	#5	STR.	19'-2"	40	* S1	64	#5	9	4'-10"	323
* A124	2	#5	STR.	20'-0"	42	A226	2	#5	STR.	18'-4"	38	* S2	64	#4	1	3'-10"	164
* A125	2	#5	STR.	19'-2"	40	A227	2	#5	STR.	17'-5"	36	* S3	840	#4	2	2'-9"	1543
* A126	2	#5	STR.	18'-4"	38	A228	2	#5	STR.	16'-7"	35	U1	140	#4	3	13'-2"	1231
* A127	2	#5	STR.	17'-5"	36	A229	2	#5	STR.	15'-9"	33	U2	56	#4	3	12'-0"	449
* A128	2	#5	STR.	16'-7"	35	A230	2	#5	STR.	14'-10"	31	U3	56	#4	10	5'-6"	206
* A129	2	#5	STR.	15'-9"	33	A231	2	#5	STR.	14'-0"	29	REINFORCING STEEL			78,782	LBS.	
* A130	2	#5	STR.	14'-10"	31	A232	2	#5	STR.	13'-1"	27	* EPOXY COATED REINFORCING STEEL			79,568	LBS.	
* A131	2	#5	STR.	14'-0"	29	A233	2	#5	STR.	12'-3"	26						
* A132	2	#5	STR.	13'-1"	27	A234	2	#5	STR.	11'-4"	24						
* A133	2	#5	STR.	12'-3"	26	A235	2	#5	STR.	10'-6"	22						
* A134	2	#5	STR.	11'-4"	24	A236	2	#5	STR.	9'-8"	20						
* A135	2	#5	STR.	10'-6"	22	A237	2	#5	STR.	8'-9"	18						
* A136	2	#5	STR.	9'-8"	20	A238	2	#5	STR.	7'-11"	17						
* A137	2	#5	STR.	8'-9"	18	A239	2	#5	STR.	7'-0"	15						
* A138	2	#5	STR.	7'-11"	17	A240	2	#5	STR.	6'-2"	13						
* A139	2	#5	STR.	7'-0"	15	A241	2	#5	STR.	5'-4"	11						
* A140	2	#5	STR.	6'-2"	13	A242	2	#5	STR.	4'-5"	9						
* A141	2	#5	STR.	5'-4"	11	A243	2	#5	STR.	3'-7"	7						
* A142	2	#5	STR.	4'-5"	9	A244	2	#5	STR.	2'-8"	6						
* A143	2	#5	STR.	3'-7"	7	A245	2	#5	STR.	2'-0"	4						
* A144	2	#5	STR.	2'-8"	6												
* A145	2	#5	STR.	2'-0"	4												

BAR TYPES



LAYOUT FOR COMPUTING AREA OF REINFORCED CONCRETE DECK SLAB (SQ. FT. = 22,585)

SUPERSTRUCTURE REINFORCING STEEL LENGTHS ARE BASED ON THE FOLLOWING MINIMUM SPLICE LENGTHS

BAR SIZE	SUPERSTRUCTURE EXCEPT APPROACH SLABS, PARAPETS, AND BARRIER RAILS		APPROACH SLABS		PARAPETS AND BARRIER RAILS
	EPOXY COATED	UNCOATED	EPOXY COATED	UNCOATED	
#4	1'-11"	1'-7"	1'-11"	1'-7"	2'-6"
#5	2'-5"	2'-0"	2'-5"	2'-0"	3'-1"
#6	2'-10"	2'-5"	3'-7"	2'-5"	3'-8"
#7	4'-2"	2'-9"			
#8	4'-9"	3'-2"			

CLASS AA CONCRETE BREAKDOWN

POUR #1	72.4	CU. YDS.
POUR #2	103.9	CU. YDS.
POUR #3	97.4	CU. YDS.
POUR #4	97.4	CU. YDS.
POUR #5	97.4	CU. YDS.
POUR #6	97.4	CU. YDS.
POUR #7	107.8	CU. YDS.
POUR #8	121.8	CU. YDS.
POUR #9A	5.2	CU. YDS.
POUR #9B	5.2	CU. YDS.
TOTAL	805.9	CU. YDS.

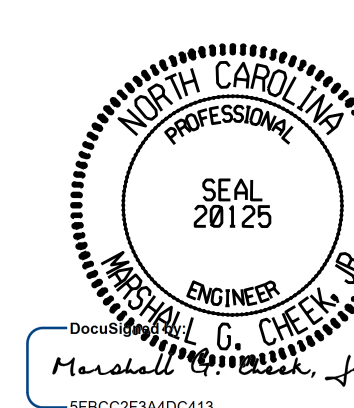
FOR LOCATION OF POURS, SEE "CONCRETE DECK POUR DETAILS" SHEET

GROOVING BRIDGE FLOORS

APPROACH SLABS	1,684	SO.FT.
BRIDGE DECK	19,151	SO.FT.
TOTAL	20,835	SO.FT.

PROJECT NO. B-4786
PITT COUNTY
STATION: 28+03.00 -L-

SHEET 2 OF 2



2/24/2022 | 7:41 AM EST

DOCUMENT NOT CONSIDERED FINAL UNLESS ALL SIGNATURES COMPLETED
TGS ENGINEERS
706 HILLSBOROUGH STREET SUITE 200
RALEIGH, NC 27603
PH (919) 773-8887
CORP. LICENSE NO.: C-0275

STATE OF NORTH CAROLINA
DEPARTMENT OF TRANSPORTATION
RALEIGH

SUPERSTRUCTURE
BILL OF MATERIAL

REVISIONS						SHEET NO.
NO.	BY:	DATE:	NO.	BY:	DATE:	S-33
1			3			TOTAL SHEETS 57
2			4			

DRAWN BY : SBW DATE : 8-18
CHECKED BY : MGC DATE : 11-18
DESIGN ENGINEER OF RECORD: MGC DATE : 8-21