

NOTES

ALL PRESTRESSING STRANDS SHALL BE 7-WIRE LOW-RELAXATION GRADE 270 STRANDS AND SHALL CONFORM TO AASHTO M203 EXCEPT FOR SAMPLING REQUIREMENTS WHICH SHALL BE IN ACCORDANCE WITH THE STANDARD SPECIFICATIONS.

ALL REINFORCING STEEL SHALL BE GRADE 60.

APPLY EPOXY PROTECTIVE COATING TO END OF GIRDER SURFACES INDICATED IN ELEVATION VIEW.

EMBEDDED PLATE "B-1" SHALL BE GALVANIZED IN ACCORDANCE WITH THE STANDARD SPECIFICATIONS.

ANCHOR STUDS SHALL CONFORM TO AASHTO M169 GRADES 1010 THROUGH 1020 OR APPROVED EQUAL, AND SHALL MEET THE TYPE "B" REQUIREMENTS OF SUBSECTION 7.3 OF THE ANSI/AASHTO/AWS D1.5 BRIDGE WELDING CODE.

AT ENDS OF GIRDERS TO BE EMBEDDED IN CONCRETE DIAPHRAGMS OR END WALLS, PRESTRESSING STRANDS MAY EXTEND A MAXIMUM OF 2" BEYOND THE GIRDER ENDS. OTHERWISE, PRESTRESSING STRANDS SHALL BE CUT FLUSH WITH THE GIRDER ENDS.

THE TRANSFER OF LOAD FROM THE ANCHORAGES TO THE GIRDER SHALL BE DONE WHEN CONCRETE HAS REACHED A COMPRESSIVE STRENGTH OF NOT LESS THAN THE REQUIRED STRENGTH SHOWN IN THE "CONCRETE RELEASE STRENGTH" TABLE.

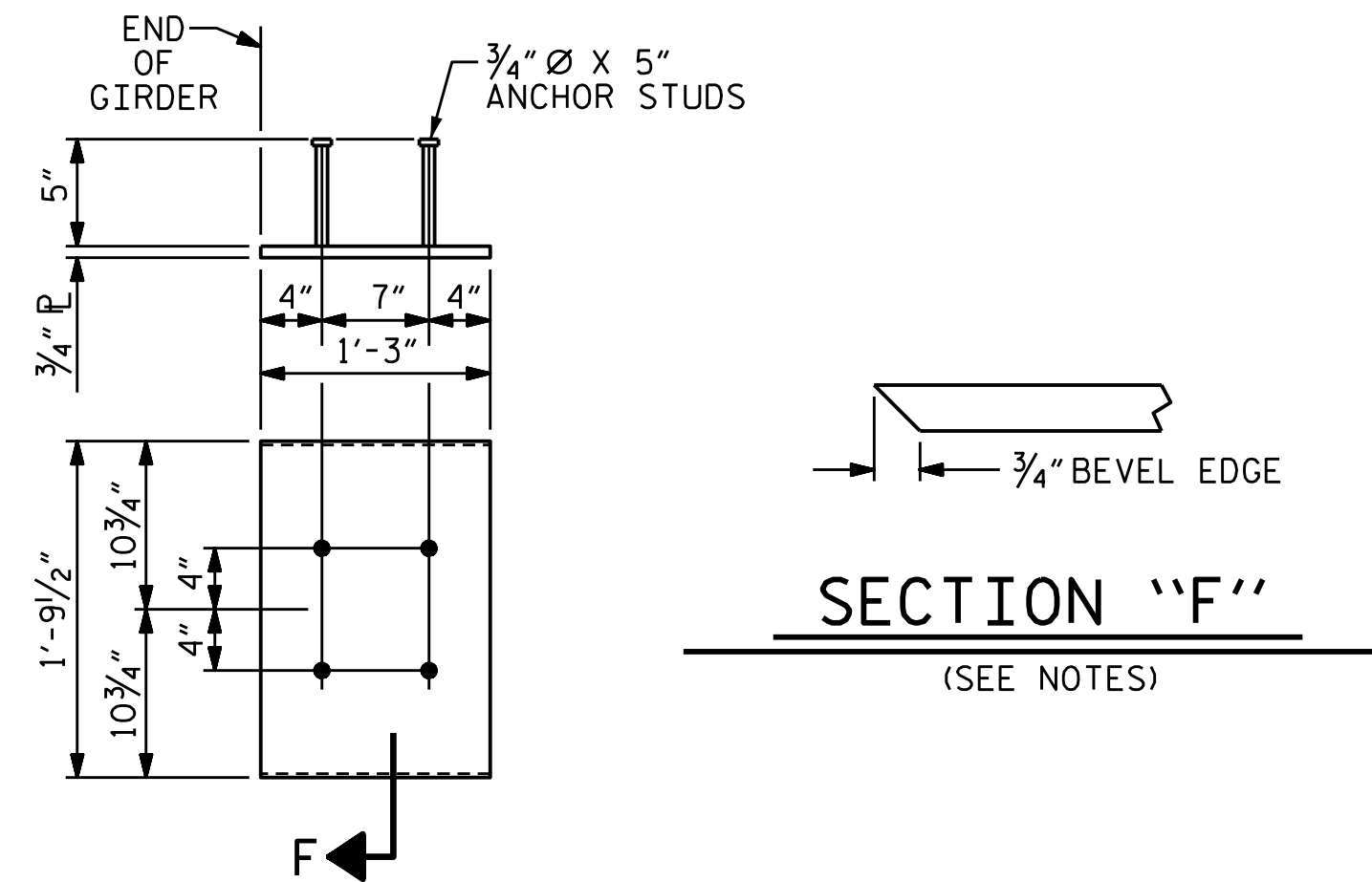
DEPENDING ON THE TYPE OF SYSTEM USED TO SUPPORT THE DECK SLAB FORMS, PRESET ANCHORS MAY BE NECESSARY IN THE PRESTRESSED CONCRETE GIRDER.

THE TOP SURFACE OF THE GIRDER, EXCLUDING THE OUTSIDE 4", SHALL BE RAKED TO A DEPTH OF 1/4".

THE CONTRACTOR HAS THE OPTION TO PROVIDE, AT NO ADDITIONAL COST TO THE DEPARTMENT, 2 ADDITIONAL STRANDS AT THE TOP OF THE GIRDER TO FACILITATE TYING OF THE REINFORCING STEEL. THESE STRANDS SHALL BE PULLED TO A LOAD OF 4500 lbs.

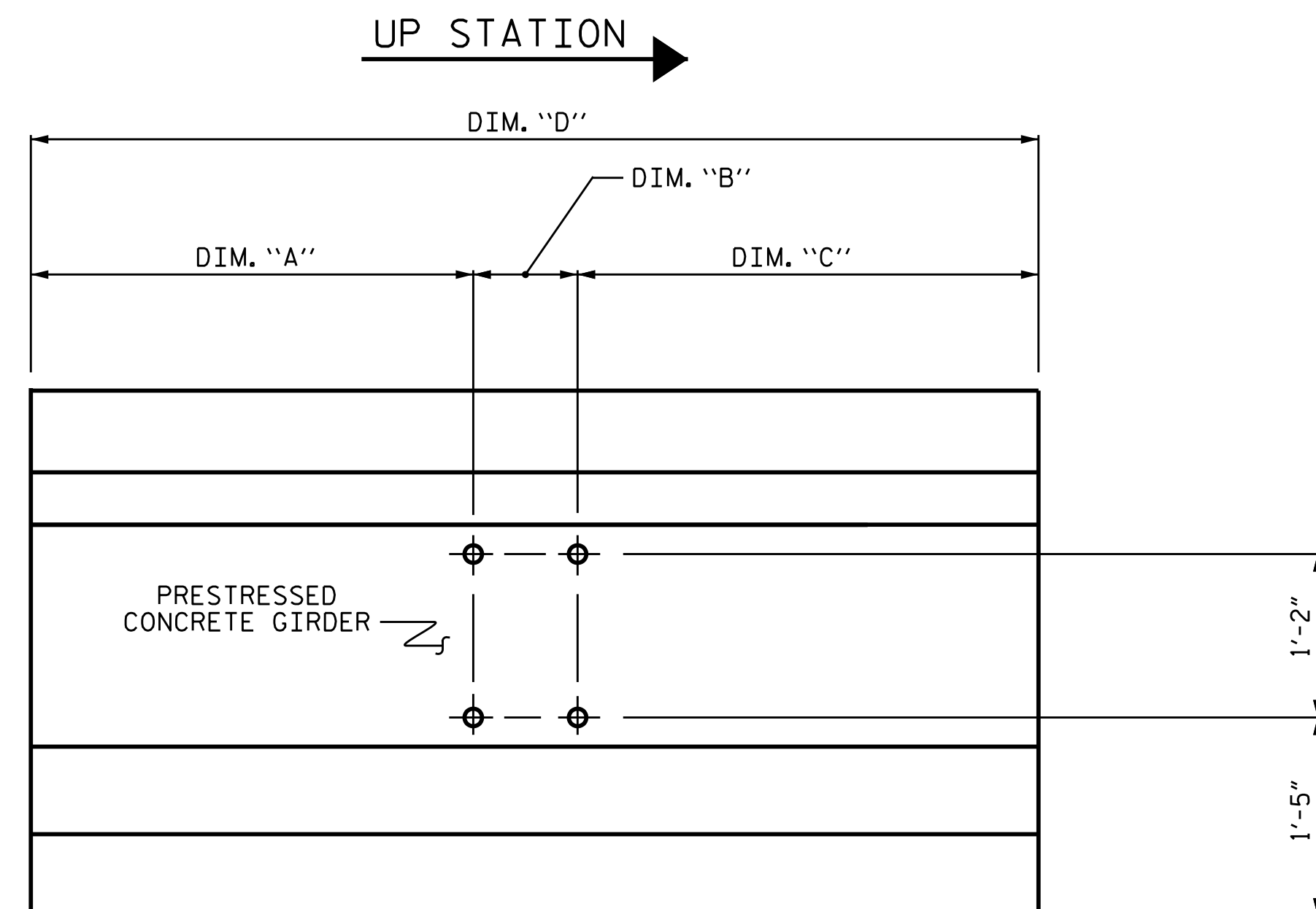
1 1/2" Ø HOLE LOCATION

GIRDER	"A"	"B"	"C"	"D"
A1	34'-9 1/2"	-	29'-9 1/2"	64'-7"
A2	29'-9 1/2"	5'-0"	29'-9 1/2"	64'-7"
A3	29'-9 1/2"	5'-0"	29'-9 1/2"	64'-7"
A4	29'-9 1/2"	5'-0"	29'-9 1/2"	64'-7"
A5	29'-9 1/2"	-	34'-9 1/2"	64'-7"
B1	37'-1"	-	32'-1"	69'-2"
B2	32'-1"	5'-0"	32'-1"	69'-2"
B3	32'-1"	5'-0"	32'-1"	69'-2"
B4	32'-1"	5'-0"	32'-1"	69'-2"
B5	32'-1"	-	37'-1"	69'-2"
C1, D1, E1, F1	34'-7"	-	29'-7"	64'-2"
C2, D2, E2, F2	29'-7"	5'-0"	29'-7"	64'-2"
C3, D3, E3, F3	29'-7"	5'-0"	29'-7"	64'-2"
C4, D4, E4, F4	29'-7"	5'-0"	29'-7"	64'-2"
C5, D5, E5, F5	29'-7"	-	34'-7"	64'-2"
G1	38'-7"	-	33'-7"	72'-2"
G2	33'-7"	5'-0"	33'-7"	72'-2"
G3	33'-7"	5'-0"	33'-7"	72'-2"
G4	33'-7"	5'-0"	33'-7"	72'-2"
G5	33'-7"	-	38'-7"	72'-2"
H1	41'-3 1/2"	-	36'-3 1/2"	77'-7"
H2	36'-3 1/2"	5'-0"	36'-3 1/2"	77'-7"
H3	36'-3 1/2"	5'-0"	36'-3 1/2"	77'-7"
H4	36'-3 1/2"	5'-0"	36'-3 1/2"	77'-7"
H5	36'-3 1/2"	-	41'-3 1/2"	77'-7"



SECTION "F"
(SEE NOTES)

EMBEDDED PLATE "B-1" DETAILS
FOR AASHTO TYPE III GIRDER
(2 REQ'D PER GIRDER)



ELEVATION- 1 1/2" Ø HOLE LOCATION

CONCRETE RELEASE STRENGTH	
SPAN	PSI
A	5500
B	5500
C-F	5500
G	6500
H	6500

PROJECT NO. B-4786
PITT COUNTY
 STATION: 28+03.00 -L-

SHEET 8 OF 9

STATE OF NORTH CAROLINA
 DEPARTMENT OF TRANSPORTATION
 RALEIGH
 STANDARD
 PRESTRESSED CONCRETE GIRDER
 CONTINUOUS FOR LIVE LOAD
 DETAILS

REVISIONS						SHEET NO.
NO.	BY:	DATE:	NO.	BY:	DATE:	S-24
1			3			TOTAL SHEETS
2			4			57

ASSEMBLED BY : SBW	DATE : 10-18
CHECKED BY : MGC	DATE : 11-18
DRAWN BY : ELR 11/91	REV. 1/15 MAA/TMG
CHECKED BY : GRP 11/91	REV. 2/15 MAA/TMG
	REV. 12/17 MAA/THC