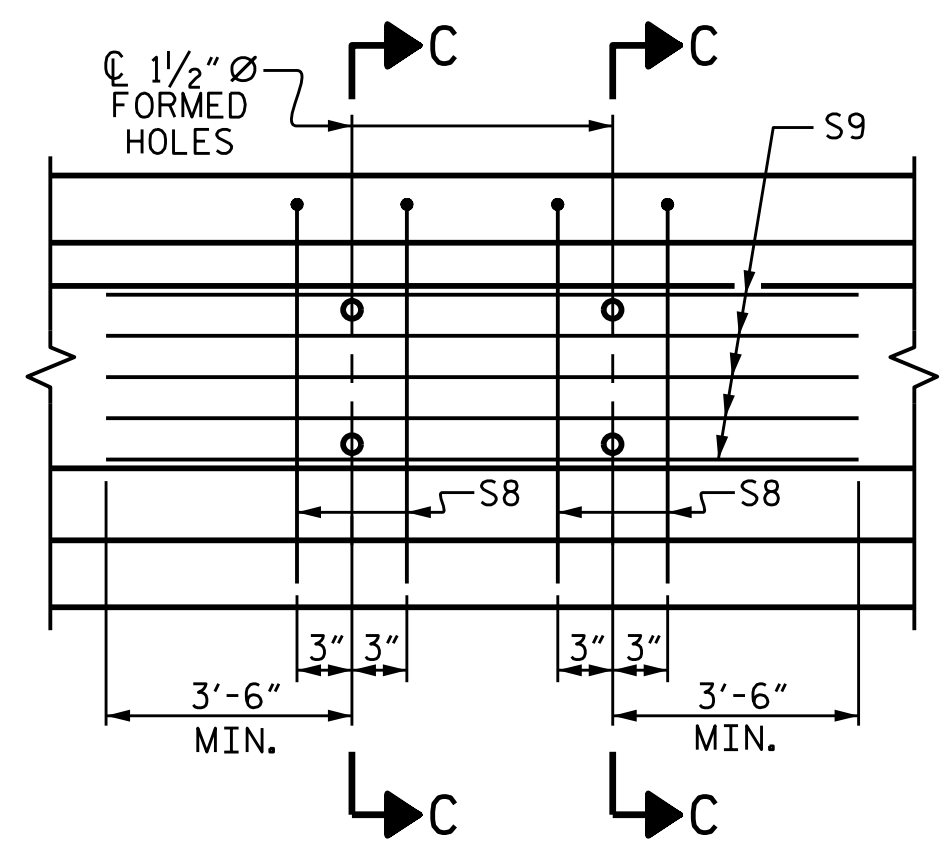
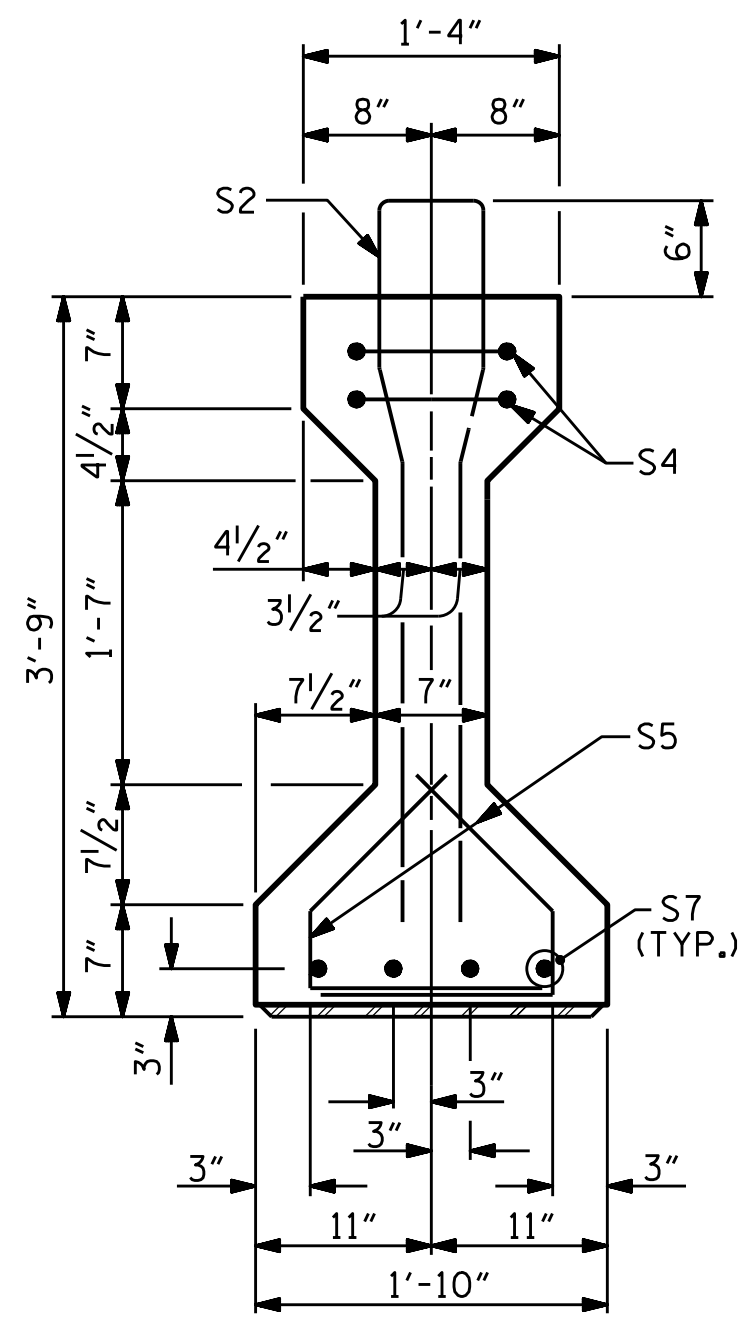


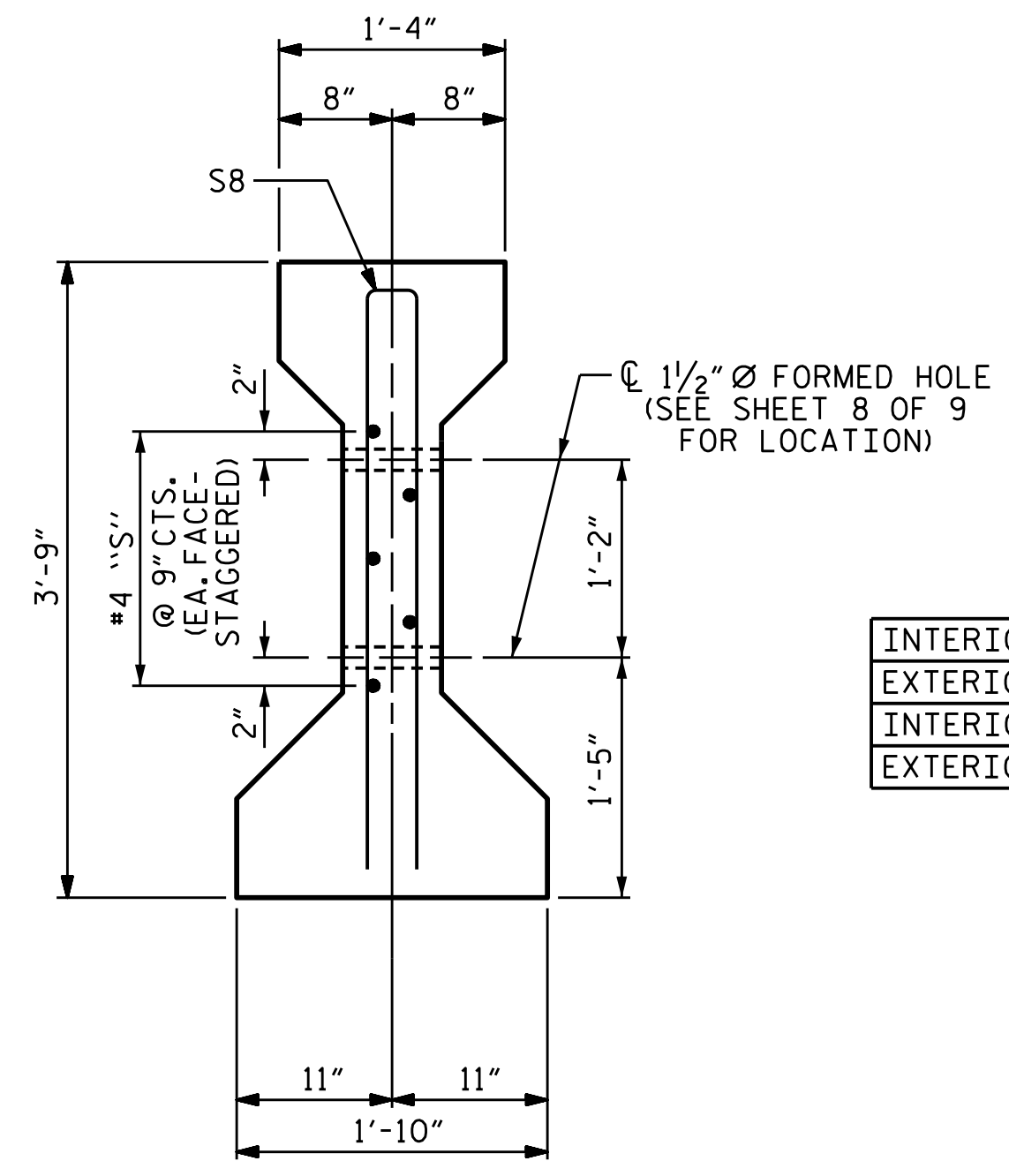
AT END OF GIRDER
AT C OF GIRDER
0.6" Ø LOW RELAXATION STRAND LAYOUT
OPTIONAL FULLY DEBONDED STRANDS.



PARTIAL ELEVATION
SHOWING INTERMEDIATE DIAPHRAGM REINFORCING STEEL FOR GIRDERS 2-4.



SECTION B-B
* FOR S7 BARS, SEE DETAIL "A", SHEET 7 OF 8.



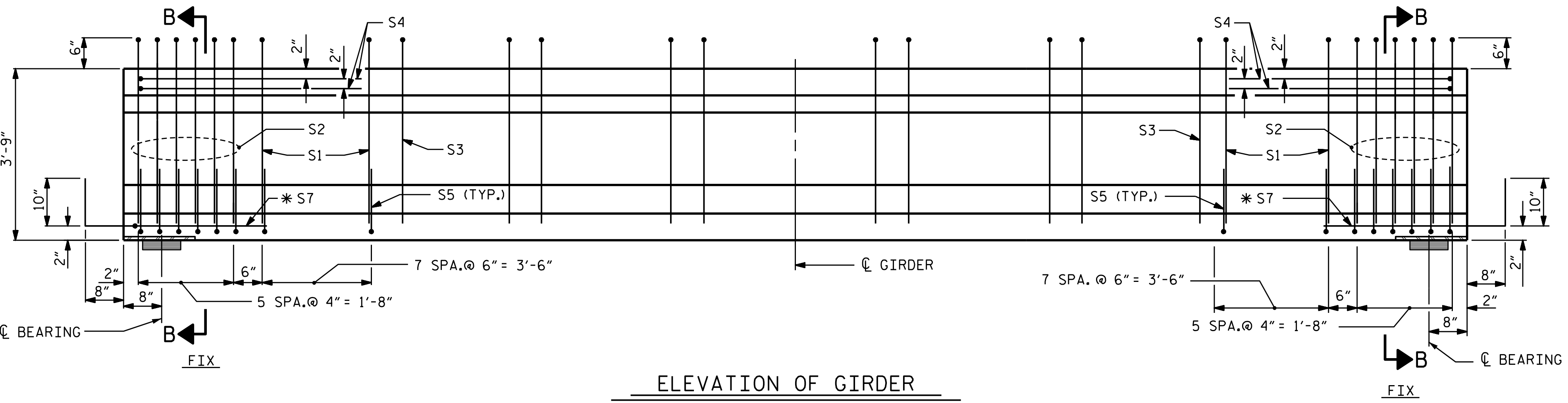
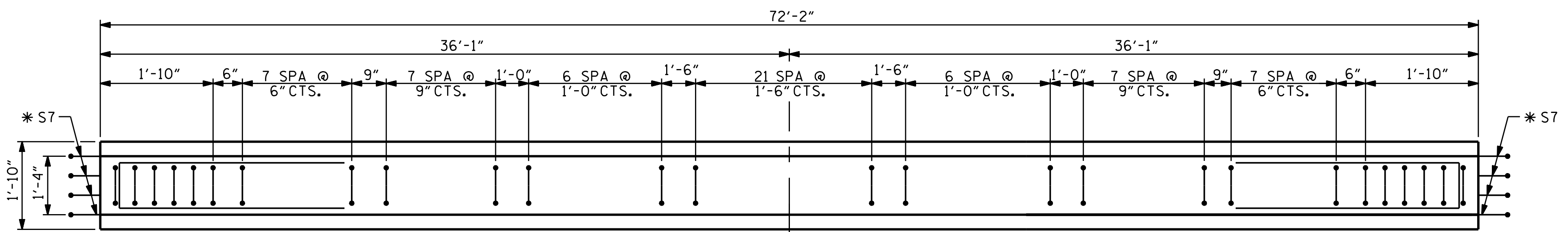
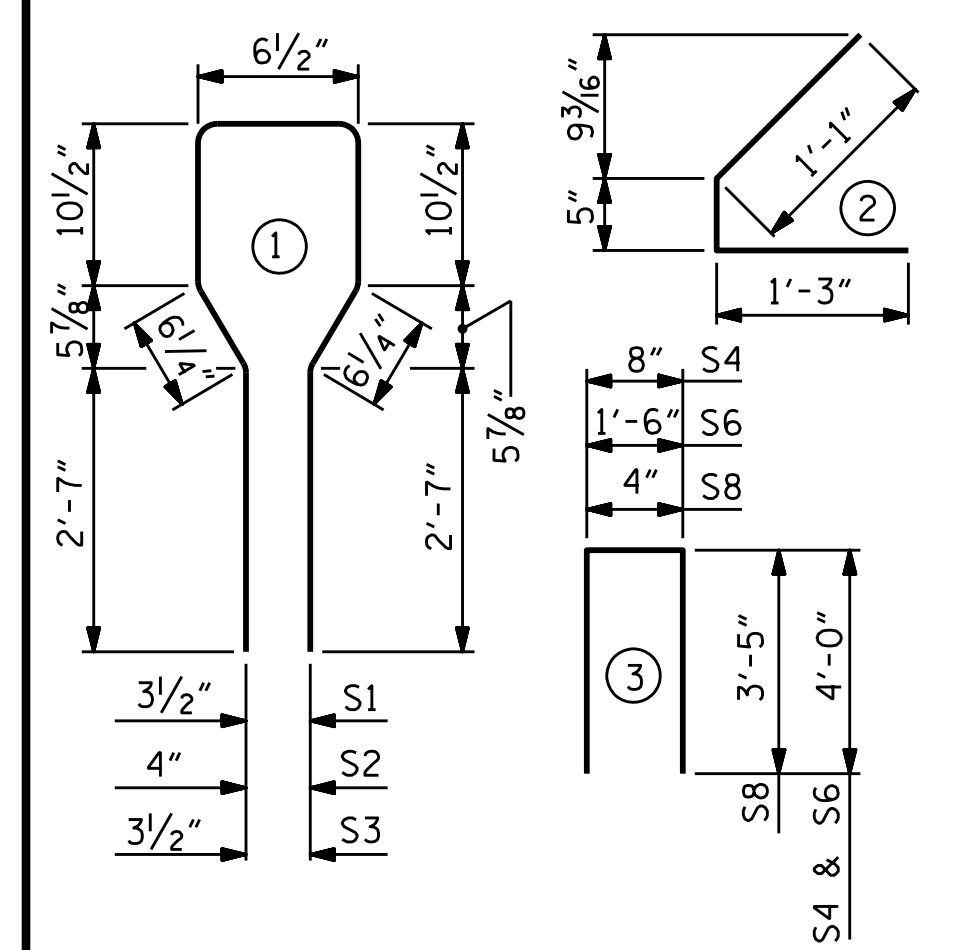
SECTION C-C
(S3 BARS NOT SHOWN)

INTERIOR	S7	8	#5	STR	3'-8"	31
INTERIOR	S8	4	#5	3	7'-2"	30
INTERIOR	S8	2	#5	3	7'-2"	15
INTERIOR	S9	5	#4	STR	12'-0"	40
EXTERIOR	S10	5	#4	STR	7'-0"	23

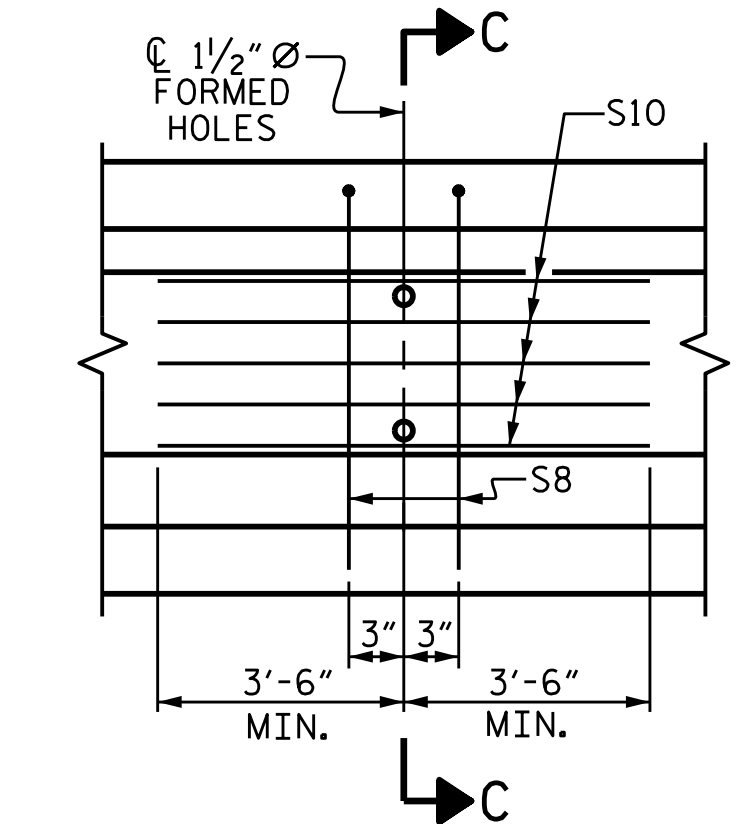
* NOTE: S7 BARS SHALL BE BENT BEFORE SHIPMENT. HEAT BENDING SHALL NOT BE ALLOWED.

BAR TYPES

ALL BAR DIMENSIONS ARE OUT-TO-OUT



ELEVATION OF GIRDER



PARTIAL ELEVATION
SHOWING INTERMEDIATE DIAPHRAGM REINFORCING STEEL FOR GIRDERS 1 & 5.

0.6" Ø L. R. GRADE 270 STRANDS

AREA (SQUARE INCHES)	ULTIMATE STRENGTH (LBS. PER STRAND)	APPLIED PRESTRESS (LBS. PER STRAND)
0.217	58,600	43,950

REINFORCING STEEL FOR ONE GIRDER

BAR	NUMBER	SIZE	TYPE	LENGTH	WEIGHT
S1	16	#5	1	8'-6"	142
S2	12	#6	1	8'-6"	153
S3	52	#4	1	8'-6"	295
S4	4	#4	3	8'-8"	23
S5	56	#4	2	2'-9"	103
* S7	8	#5	STR	3'-8"	31
INTERIOR S8	4	#5	3	7'-2"	30
INTERIOR S8	2	#5	3	7'-2"	15
INTERIOR S9	5	#4	STR	12'-0"	40
EXTERIOR S10	5	#4	STR	7'-0"	23

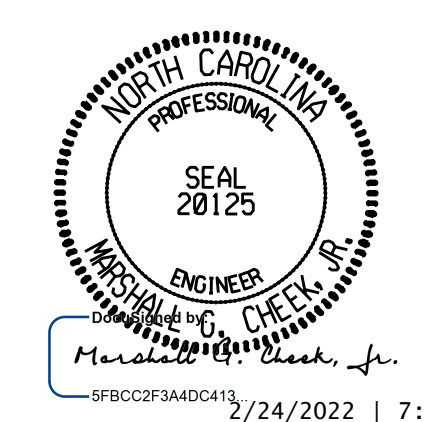
QUANTITIES FOR ONE GIRDER

	REINFORCING STEEL LB.	8,000 PSI CONCRETE C.Y.	0.6" Ø L. R. STRANDS No.
GIRDER 2-4	817	10.4	24
GIRDER 1 & 5	785	10.4	24

GIRDERS REQUIRED

NUMBER	LENGTH	TOTAL LENGTH
5	72'-2"	360'-10"

PROJECT NO. B-4786
PITT COUNTY
STATION: 28+03.00 -L-
SHEET 4 OF 9



DOCUMENT NOT CONSIDERED FINAL UNLESS ALL SIGNATURES COMPLETED
TGS ENGINEERS
706 HILLSBOROUGH STREET SUITE 200
RALEIGH, NC 27603
PH (919) 773-8887
CORP. LICENSE NO.: C-0275

STATE OF NORTH CAROLINA
DEPARTMENT OF TRANSPORTATION
RALEIGH

STANDARD
AASHTO TYPE III
PRESTRESSED CONCRETE GIRDER
CONTINUOUS FOR LIVE LOAD
SPAN G

REVISIONS						SHEET NO.
NO.	BY:	DATE:	NO.	BY:	DATE:	S-20
1			3			TOTAL SHEETS
2			4			57

ASSEMBLED BY : STM	DATE : 08/21
CHECKED BY : MGC	DATE : 08/21
DESIGN ENGINEER OF RECORD : STM	DATE : 08/21
DRAWN BY : ELR 8/91	REV. 10/1/11 MAA/GM
CHECKED BY : GRP 8/91	REV. 1/15 MAA/TMG
	REV. 12/17 MAA/THC