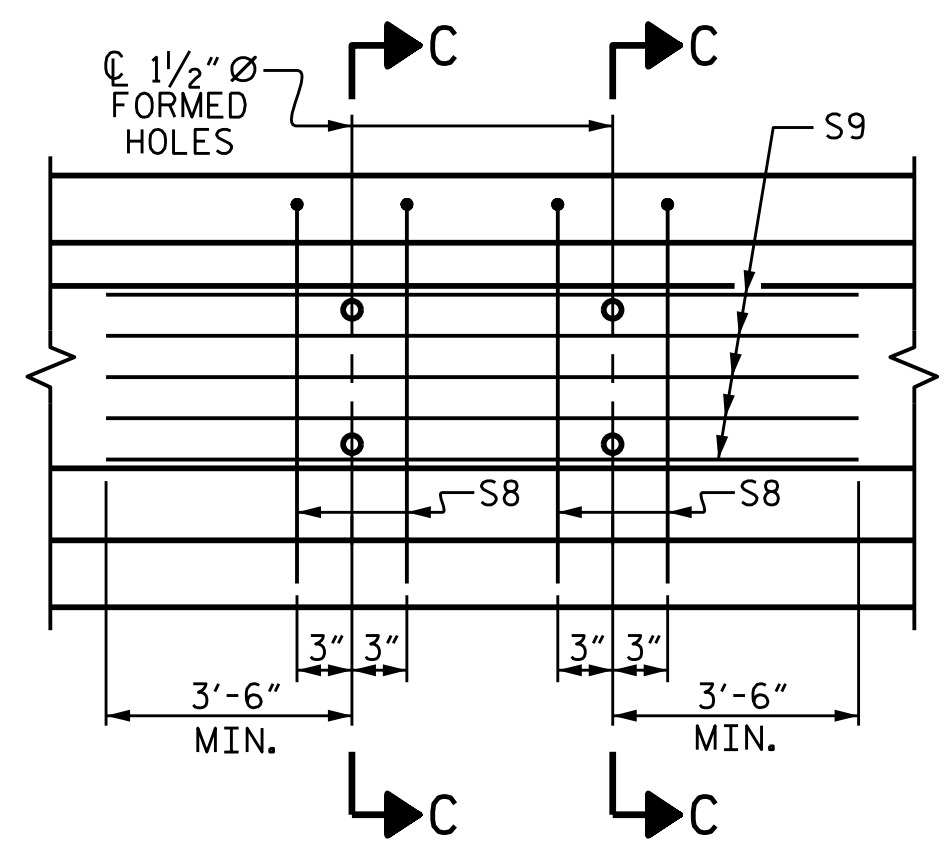
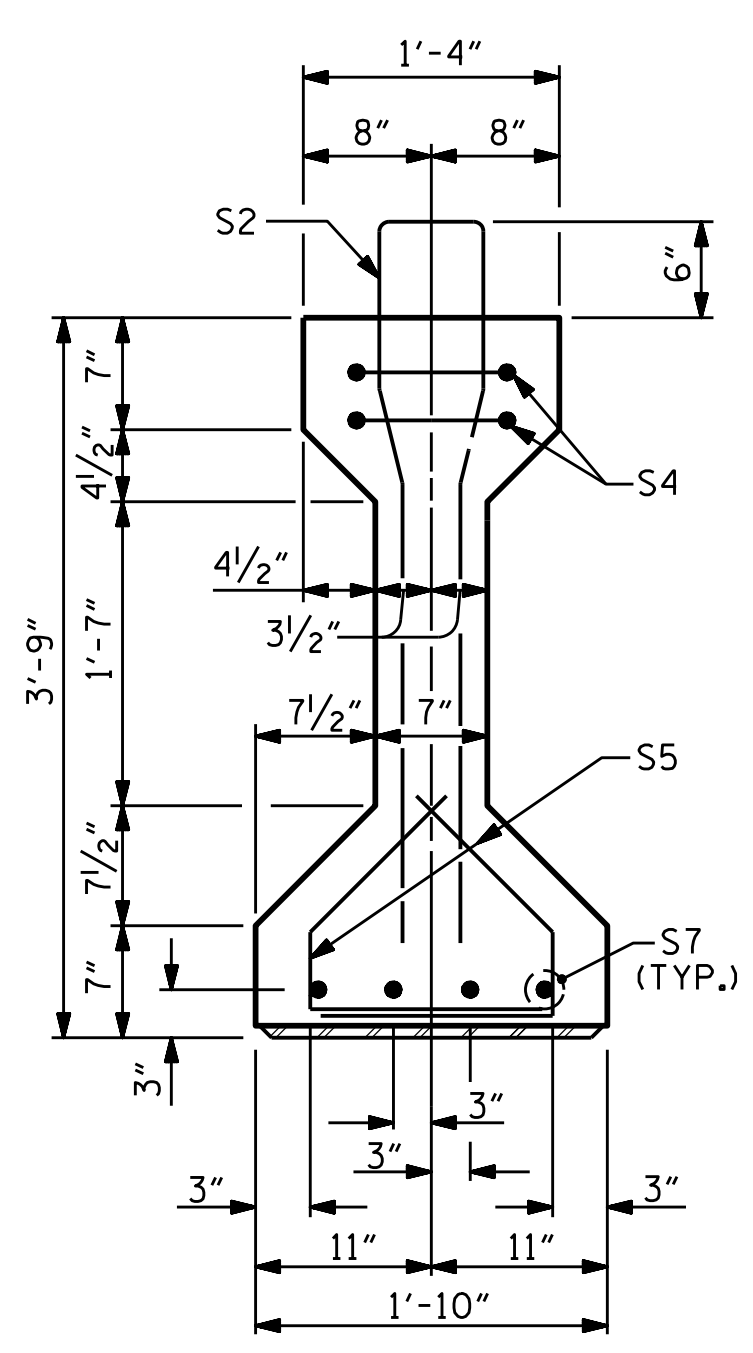


AT END OF GIRDER
AT C OF GIRDER
0.6" Ø LOW RELAXATION STRAND LAYOUT

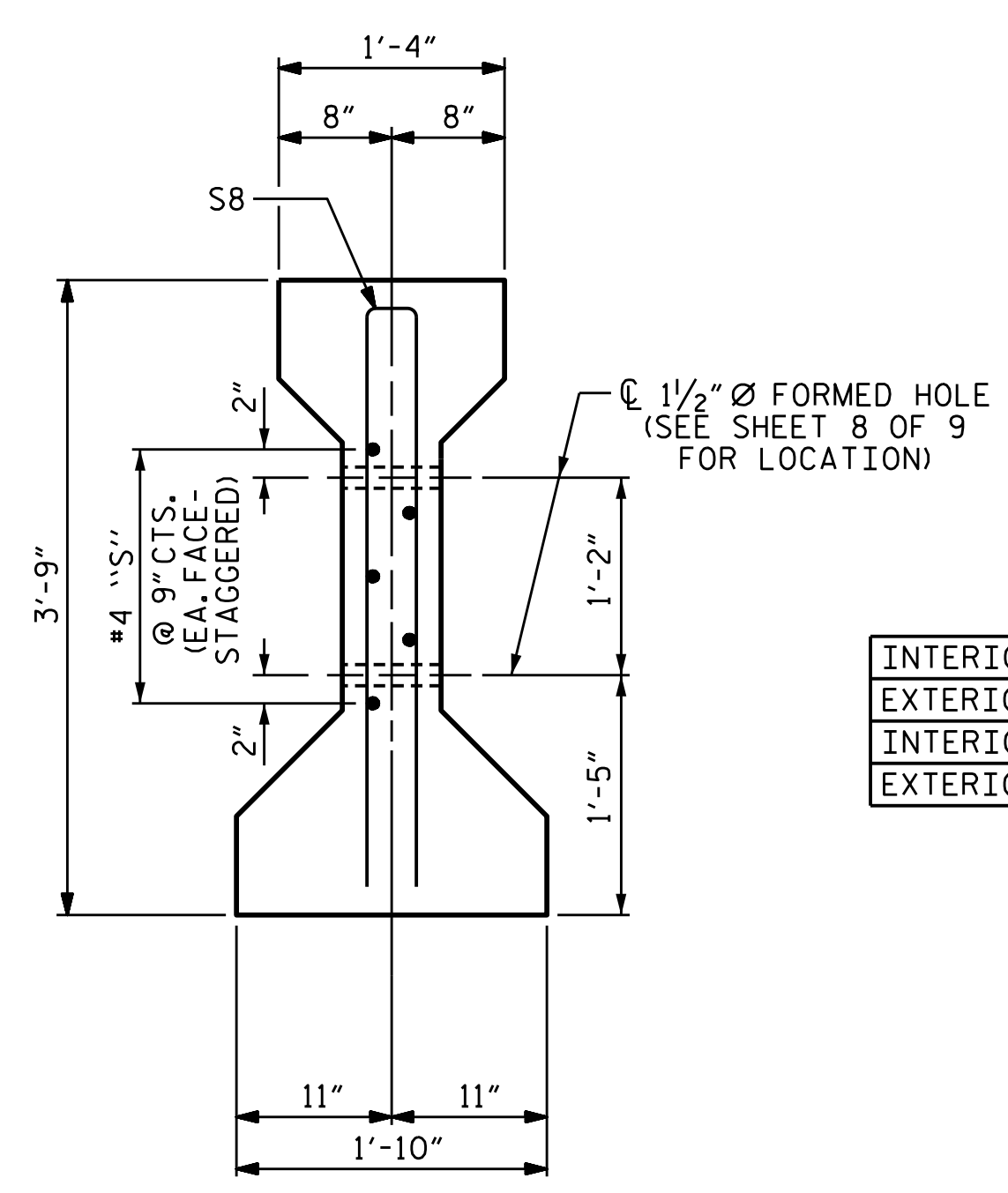
- ▲ STRANDS DEBONDED FOR A DISTANCE OF 8'-0" FROM END OF GIRDER.
- OPTIONAL FULLY DEBONDED STRANDS.



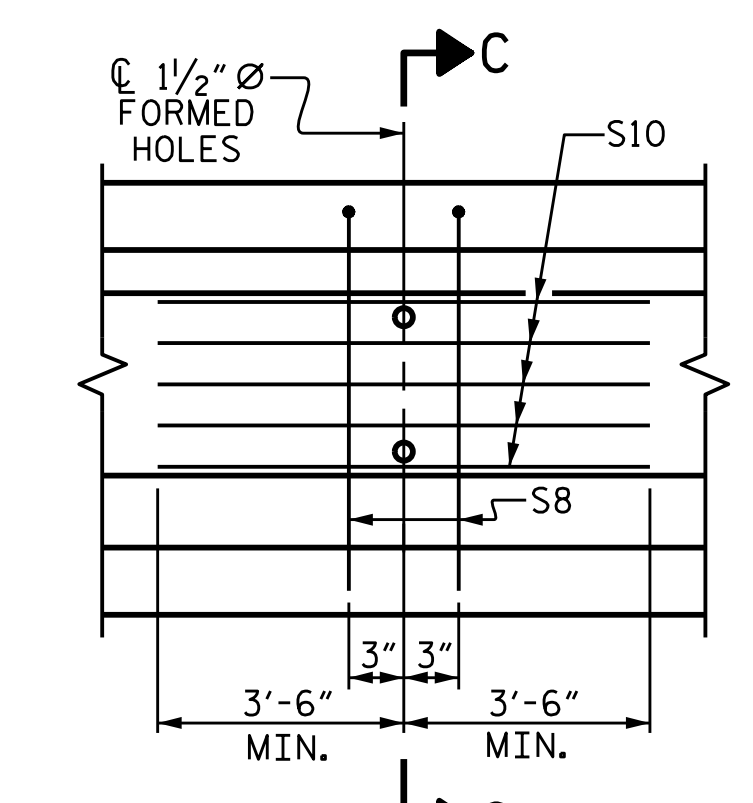
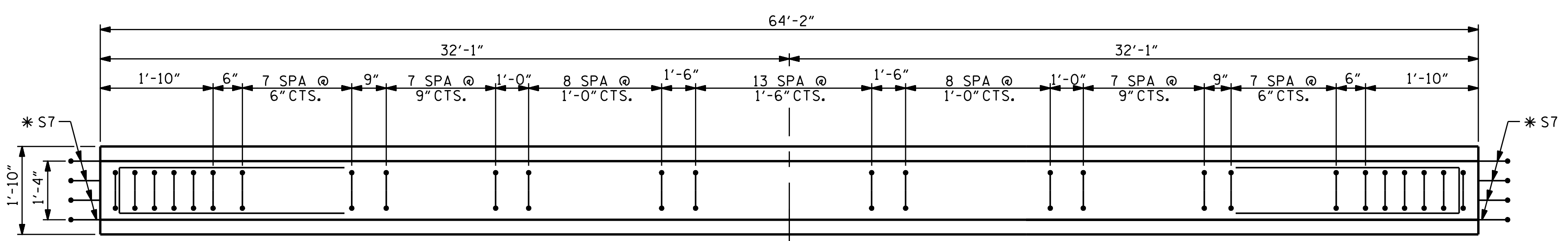
PARTIAL ELEVATION
SHOWING INTERMEDIATE DIAPHRAGM REINFORCING STEEL FOR GIRDERS 2-4.



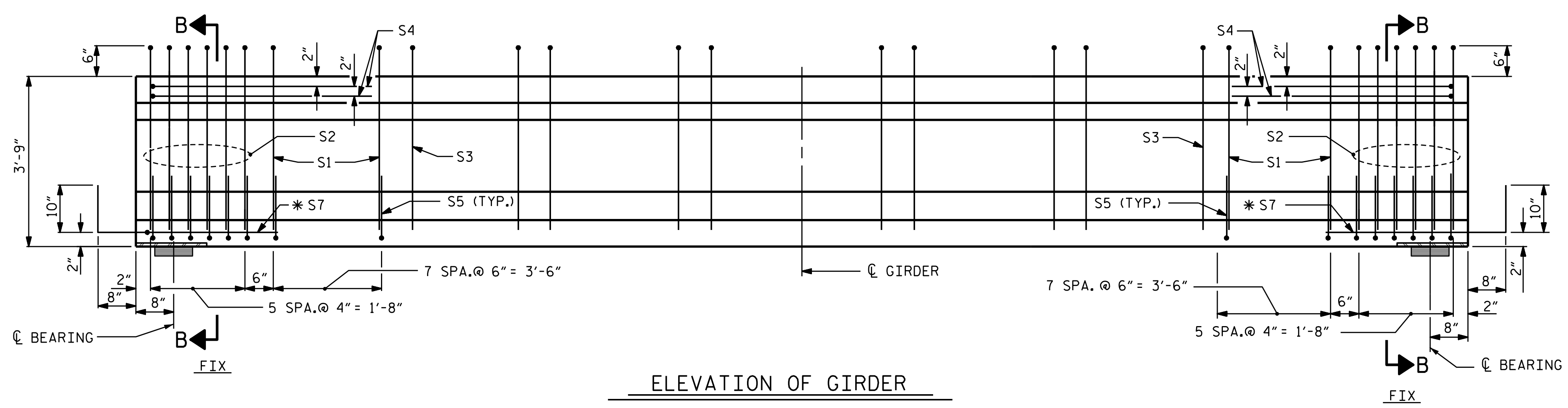
SECTION B-B



SECTION C-C
(S3 BARS NOT SHOWN)



PARTIAL ELEVATION
SHOWING INTERMEDIATE DIAPHRAGM REINFORCING STEEL FOR GIRDERS 1 & 5.



ELEVATION OF GIRDER

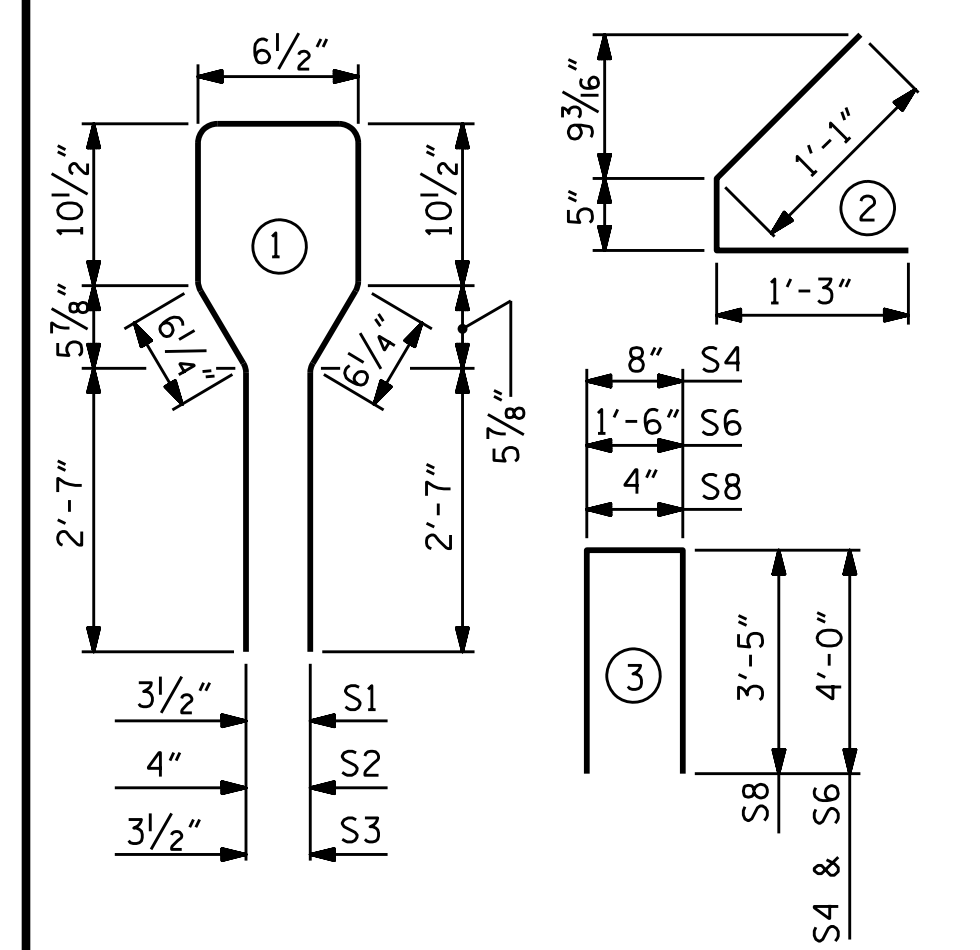
0.6" Ø L. R. GRADE 270 STRANDS		
AREA (SQUARE INCHES)	ULTIMATE STRENGTH (LBS. PER STRAND)	APPLIED PRESTRESS (LBS. PER STRAND)
0.217	58,600	43,950

REINFORCING STEEL FOR ONE GIRDER					
BAR	NUMBER	SIZE	TYPE	LENGTH	WEIGHT
S1	16	#5	1	8'-6"	142
S2	12	#6	1	8'-6"	153
S3	48	#4	1	8'-6"	273
S4	4	#4	3	8'-8"	23
S5	56	#4	2	2'-9"	103
*S7	8	#5	STR	3'-8"	31
S8	4	#5	3	7'-2"	30
S8	2	#5	3	7'-2"	15
S9	5	#4	STR	12'-0"	40
S10	5	#4	STR	7'-0"	23

* NOTE: S7 BARS SHALL BE BENT BEFORE SHIPMENT. HEAT BENDING SHALL NOT BE ALLOWED.

BAR TYPES

ALL BAR DIMENSIONS ARE OUT-TO-OUT



QUANTITIES FOR ONE GIRDER			
	REINFORCING STEEL LB.	7,000 PSI CONCRETE C.Y.	0.6" Ø L. R. STRANDS No.
GIRDER 2-4	795	9.2	18
GIRDER 1 & 5	763	9.2	18

GIRDERS REQUIRED

NUMBER	LENGTH	TOTAL LENGTH
20	64'-2"	1283'-4"

PROJECT NO. B-4786
PITT COUNTY
STATION: 28+03.00 -L-

SHEET 3 OF 9

STATE OF NORTH CAROLINA
DEPARTMENT OF TRANSPORTATION
RALEIGH

STANDARD
AASHTO TYPE III
PRESTRESSED CONCRETE GIRDER
CONTINUOUS FOR LIVE LOAD
SPANS C-F

9/24/2021
X:\MCDOT\B-4786\Structures\Final plans\DCNs\401.039.B4786.SMU.G3.019.dgn
User: sbwilliams

ASSEMBLED BY : STM DATE : 08/21
CHECKED BY : MGC DATE : 08/21
DESIGN ENGINEER OF RECORD : STM DATE : 08/21

DRAWN BY : ELR 8/91
CHECKED BY : GRP 8/91

REV. 10/1/11 MAA/GM
REV. 1/15 MAA/TMG
REV. 12/17 MAA/THC

REVISIONS

NO.	BY:	DATE:	NO.	BY:	DATE:
1			3		
2			4		

SHEET NO. S-19
TOTAL SHEETS 57

STD. NO. PCG5

DOCUMENT NOT CONSIDERED FINAL UNLESS ALL SIGNATURES COMPLETED

TGS ENGINEERS
706 HILLSBOROUGH STREET
SUITE 200
RALEIGH, NC 27603
PH (919) 773-8887
CORP. LICENSE NO.: C-0275

SEAL 20125
ENGINEER
MCDONALD, C. CHECK, JR.
MCDONALD, C. CHECK, JR.
SFBCC2F34MDC19/24/2022 1 7:41 AM EST