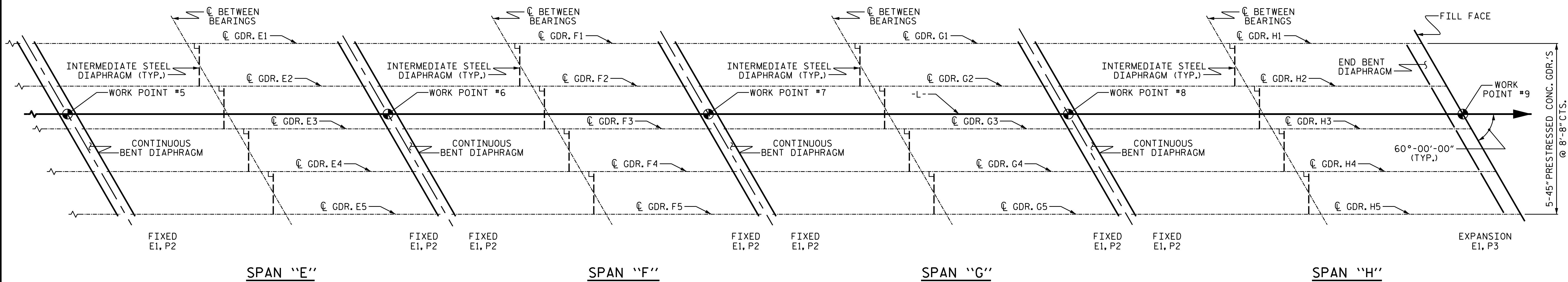


SPANS "A" THRU "D" GIRDER LAYOUT

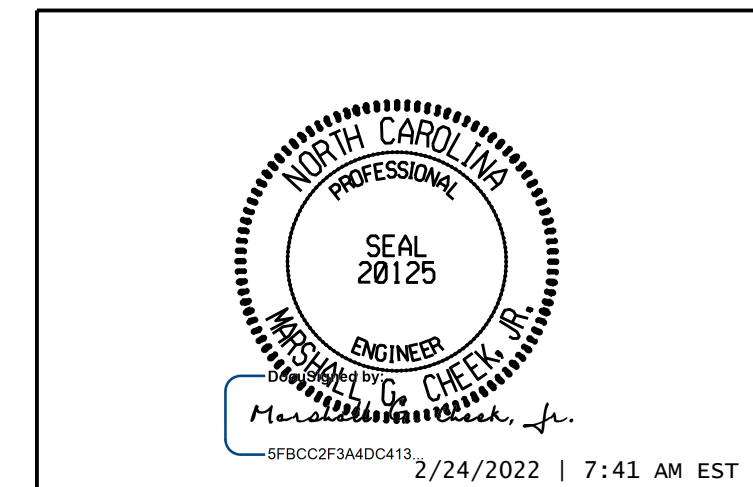


SPANS "E" THRU "H" GIRDER LAYOUT

NOTES

FOR LOCATION OF 1/2" Ø HOLES, SEE "PRESTRESSED CONCRETE GIRDER CONTINUOUS FOR LIVE LOAD DETAILS" SHEET.
 FOR ELASTOMERIC BEARINGS AND SOLE PLATE DETAILS, SEE "ELASTOMERIC BEARING DETAILS" SHEET.

PROJECT NO. B-4786
PITT COUNTY
 STATION: 28+03.00 -L-



STATE OF NORTH CAROLINA
 DEPARTMENT OF TRANSPORTATION
 RALEIGH
GIRDER LAYOUT

DRAWN BY : SBW DATE : 9/18
 CHECKED BY : MGC DATE : 11-18
 DESIGN ENGINEER OF RECORD: MGC DATE : 8-19

DOCUMENT NOT CONSIDERED FINAL
 UNLESS ALL SIGNATURES COMPLETED
TGS ENGINEERS
 706 HILLSBOROUGH STREET
 SUITE 200
 RALEIGH, NC 27603
 PH (919) 773-8887
 CORP. LICENSE NO.: C-0275

REVISIONS						SHEET NO.
NO.	BY:	DATE:	NO.	BY:	DATE:	
1			3			S-16
2			4			TOTAL SHEETS 57