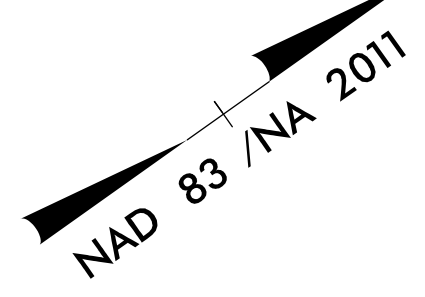


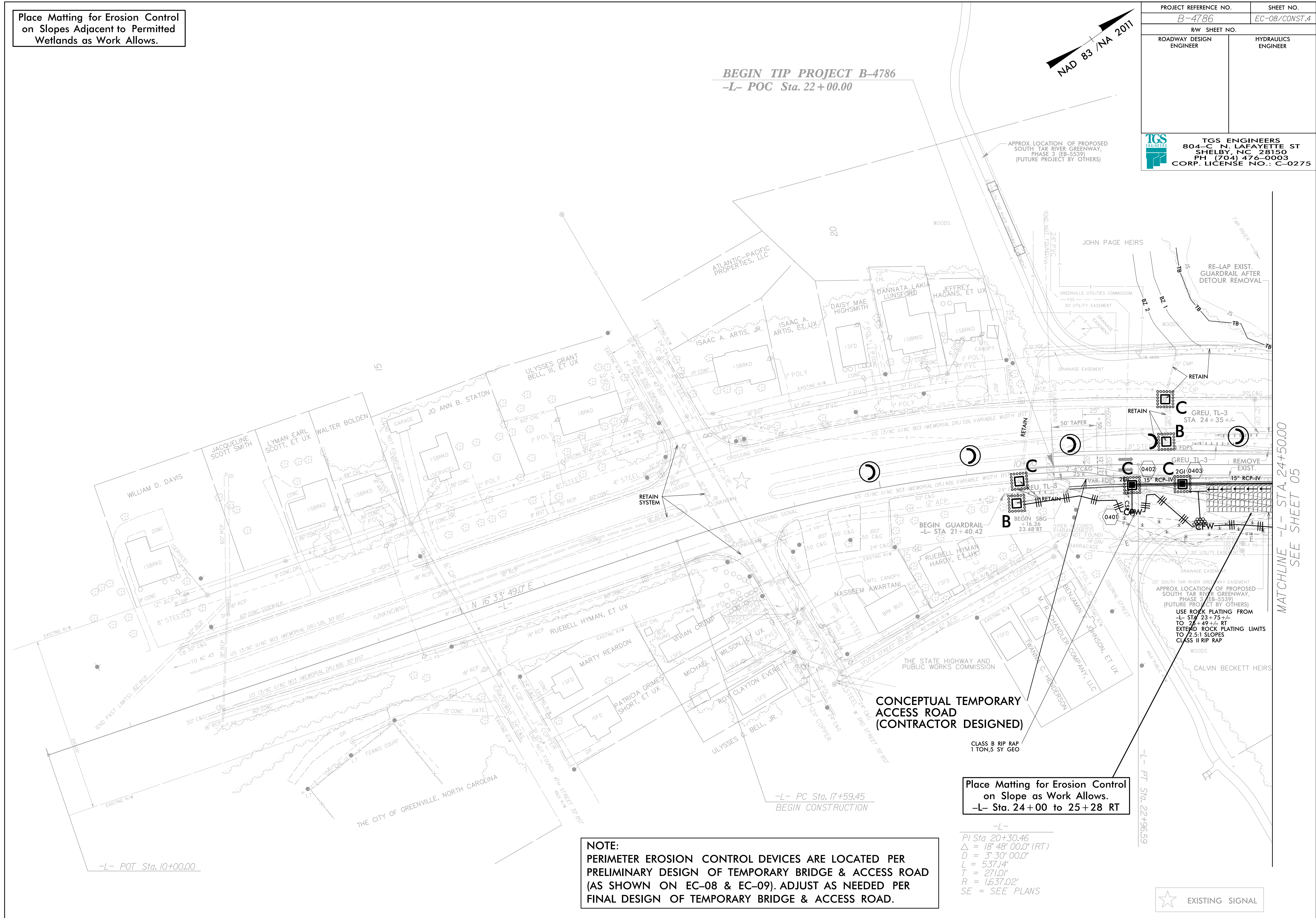
Place Matting for Erosion Control on Slopes Adjacent to Permitted Wetlands as Work Allows.

BEGIN TIP PROJECT B-4786
-L- POC Sta. 22+00.00



PROJECT REFERENCE NO. B-4786	SHEET NO. EC-08/CONST.4
RW SHEET NO.	
ROADWAY DESIGN ENGINEER	HYDRAULICS ENGINEER

TGS ENGINEERS
804-C N. LAFAYETTE ST
SHELBY, NC 28150
PH (704) 476-0003
CORP. LICENSE NO.: C-0275



APPROX. LOCATION OF PROPOSED SOUTH TAR RIVER GREENWAY, PHASE 3 (EB-5539) (FUTURE PROJECT BY OTHERS)

USE ROCK PLATING FROM -L- STA. 23+75+/- TO 26+49+/- RT EXTEND ROCK PLATING LIMITS TO 2.5:1 SLOPES CLASS II RIP RAP

Place Matting for Erosion Control on Slope as Work Allows.
-L- Sta. 24+00 to 25+28 RT

CLASS B RIP RAP
1 TON 5 SY GEO

NOTE:
PERIMETER EROSION CONTROL DEVICES ARE LOCATED PER PRELIMINARY DESIGN OF TEMPORARY BRIDGE & ACCESS ROAD (AS SHOWN ON EC-08 & EC-09). ADJUST AS NEEDED PER FINAL DESIGN OF TEMPORARY BRIDGE & ACCESS ROAD.

-L-
PI Sta 20+30.46
Δ = 18' 48" 00.0" (RT)
D = 3' 30" 00.0"
L = 537.14'
T = 271.01'
R = 1,637.02'
SE = SEE PLANS

