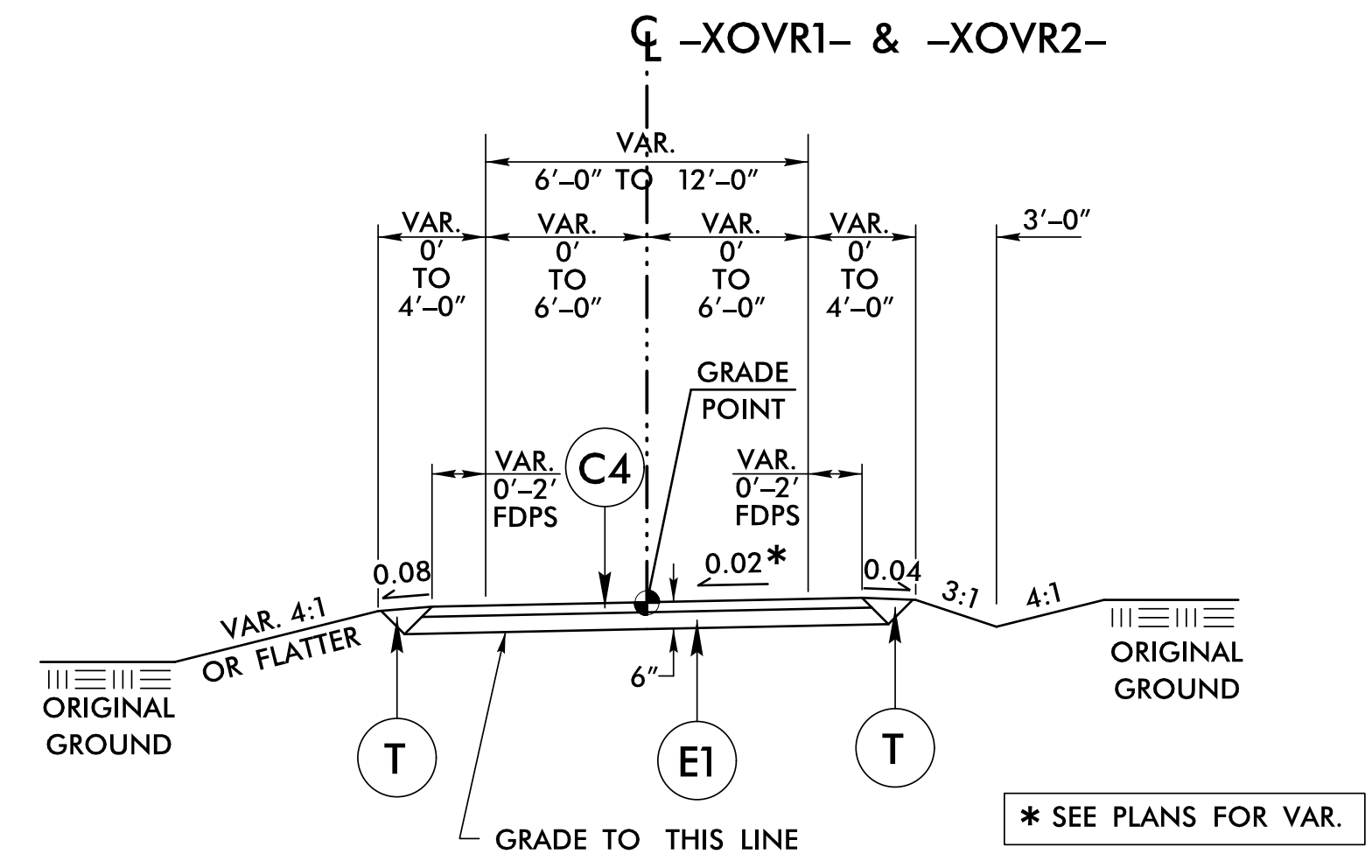
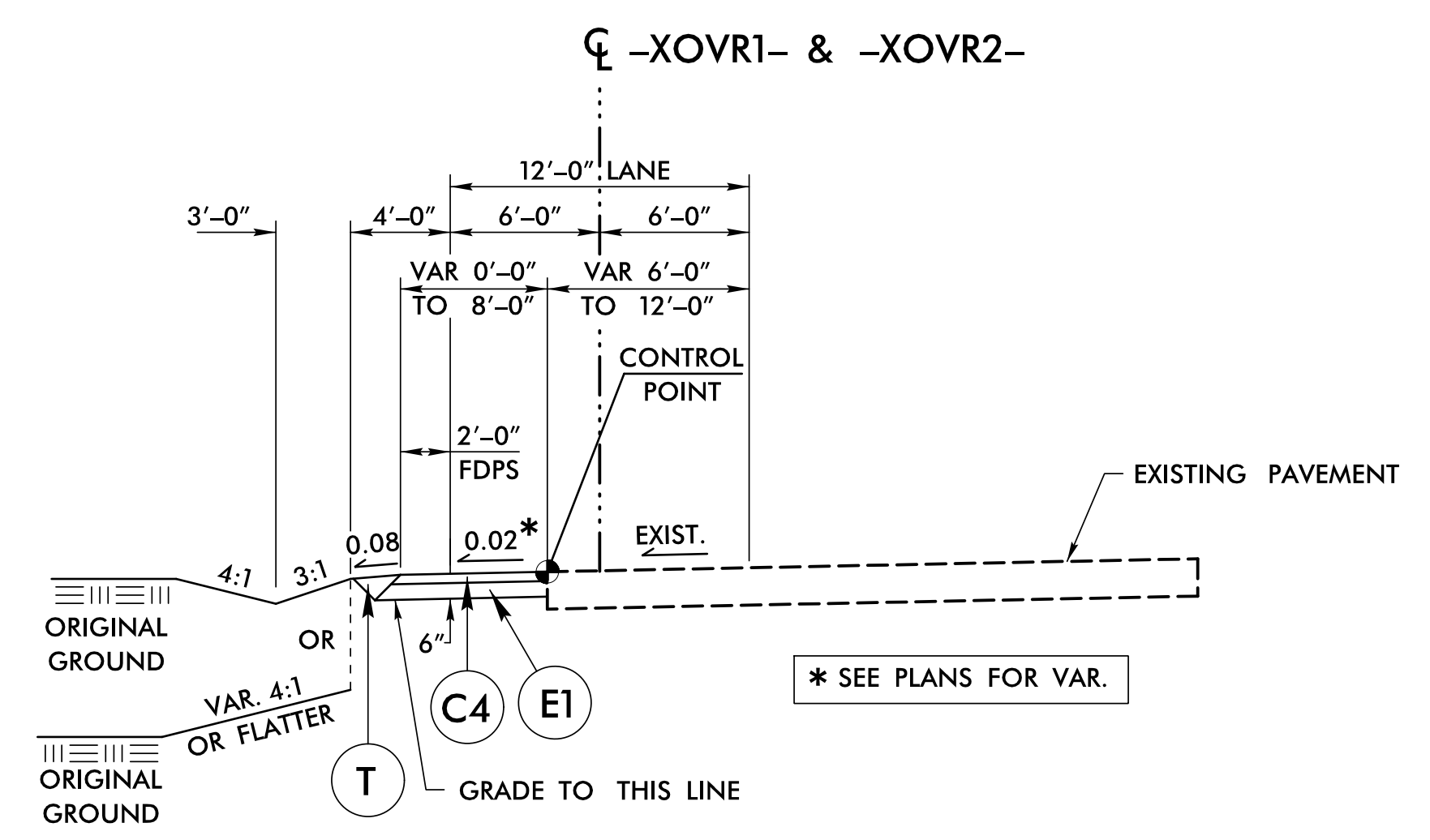


6/2/2022



TYPICAL SECTION NO. 4

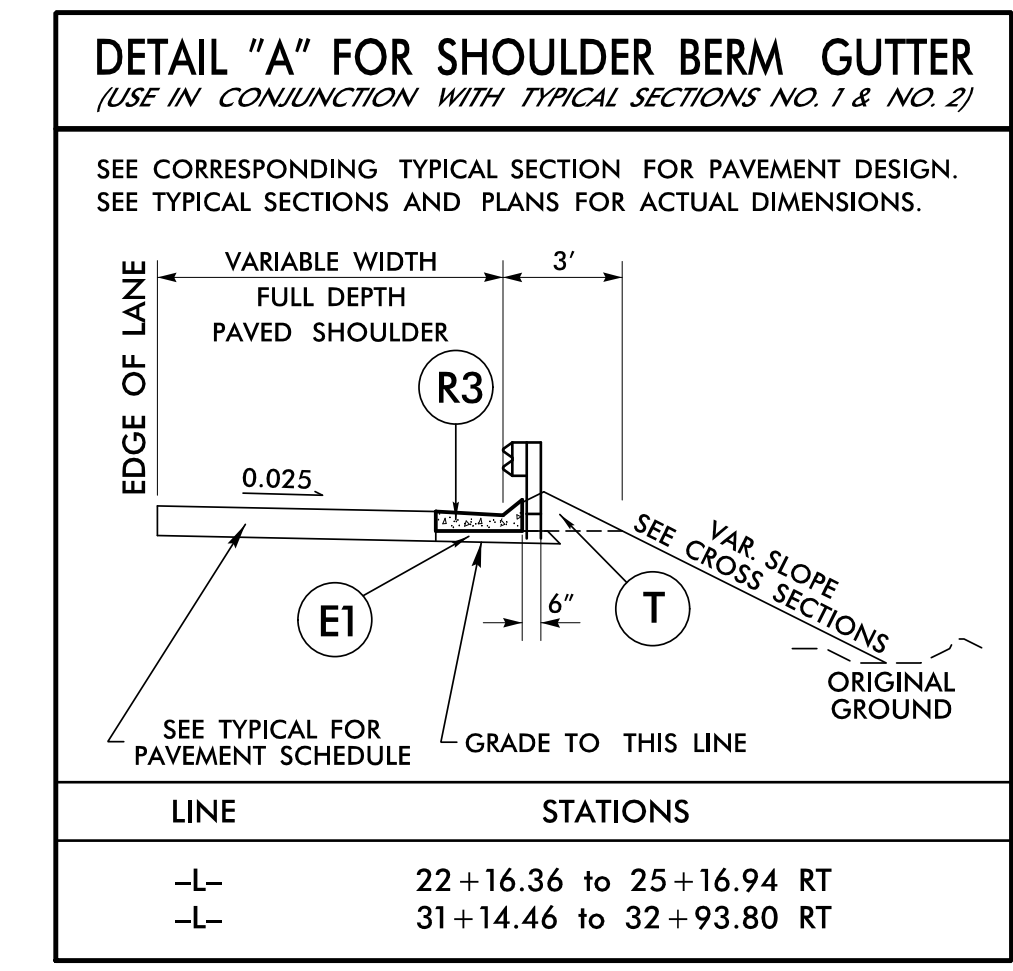
USE TYPICAL SECTION NO. 4 AS FOLLOWS:
 FROM -XOVR1- STA. 11+85.23 TO 13+34.23
 FROM -XOVR2- STA. 12+70.85 TO 14+26.05



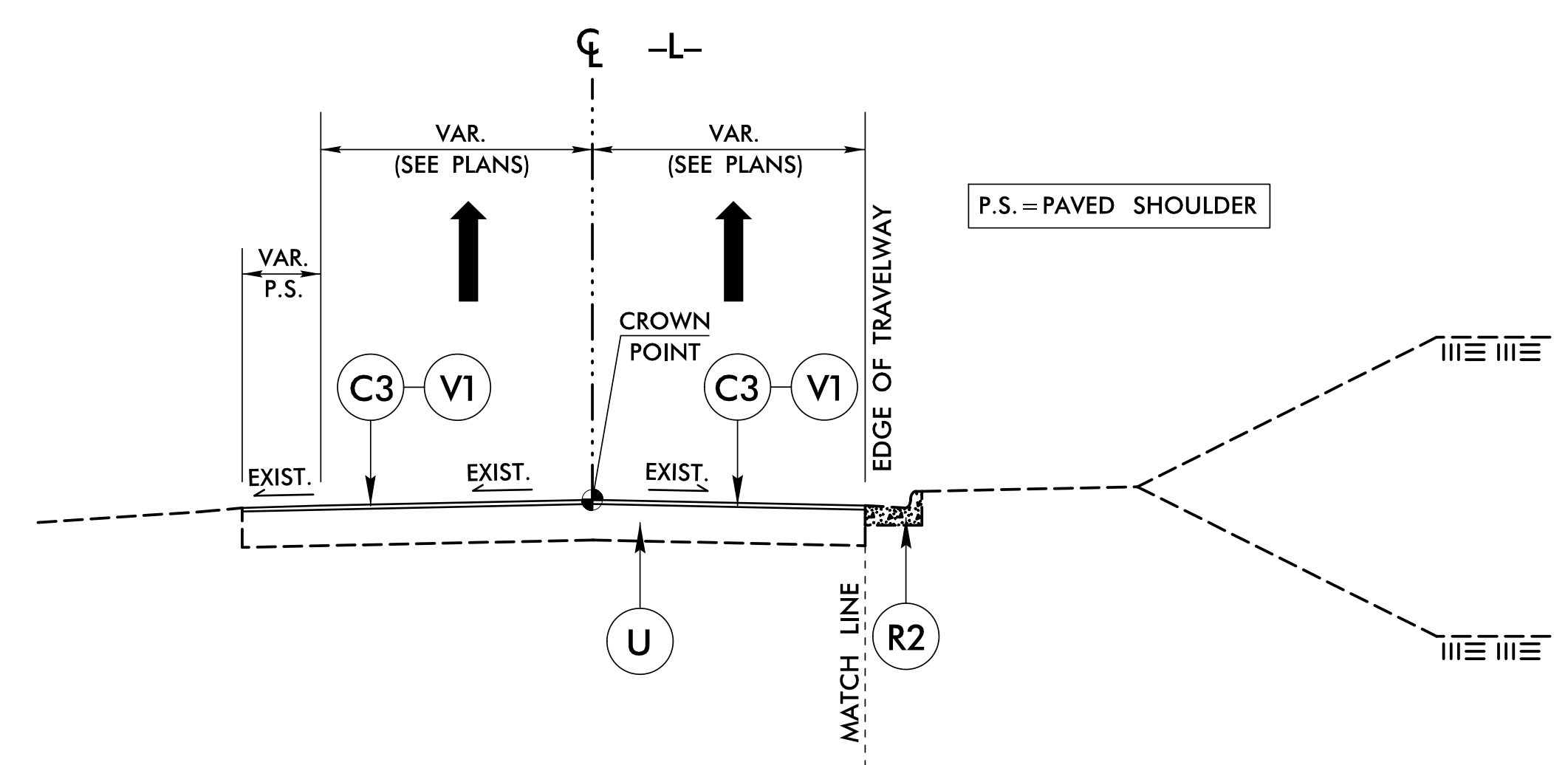
TYPICAL SECTION NO. 5

USE TYPICAL SECTION NO. 5 AS FOLLOWS:
 WIDEN USING EXISTING RIGHT MEDIAN EDGE OF PAVEMENT
 AND -XOVR1- OR -XOVR2- SUPERELEVATION AS CONTROL:
 FROM -XOVR1- STA. 11+20.39 TO 11+85.23
 FROM -XOVR2- STA. 14+26.05 TO 14+90.89
 WIDEN USING EXISTING LEFT MEDIAN EDGE OF PAVEMENT
 AND -XOVR1- OR -XOVR2- SUPERELEVATION AS CONTROL:

FROM -XOVR1- STA. 13+34.23 TO 15+44.44 (MIRROR TYPICAL; EXIST. PVMT. ON LEFT, WIDEN ON RIGHT)
 FROM -XOVR2- STA. 11+71.85 TO 12+70.85 (MIRROR TYPICAL; EXIST. PVMT. ON LEFT, WIDEN ON RIGHT)

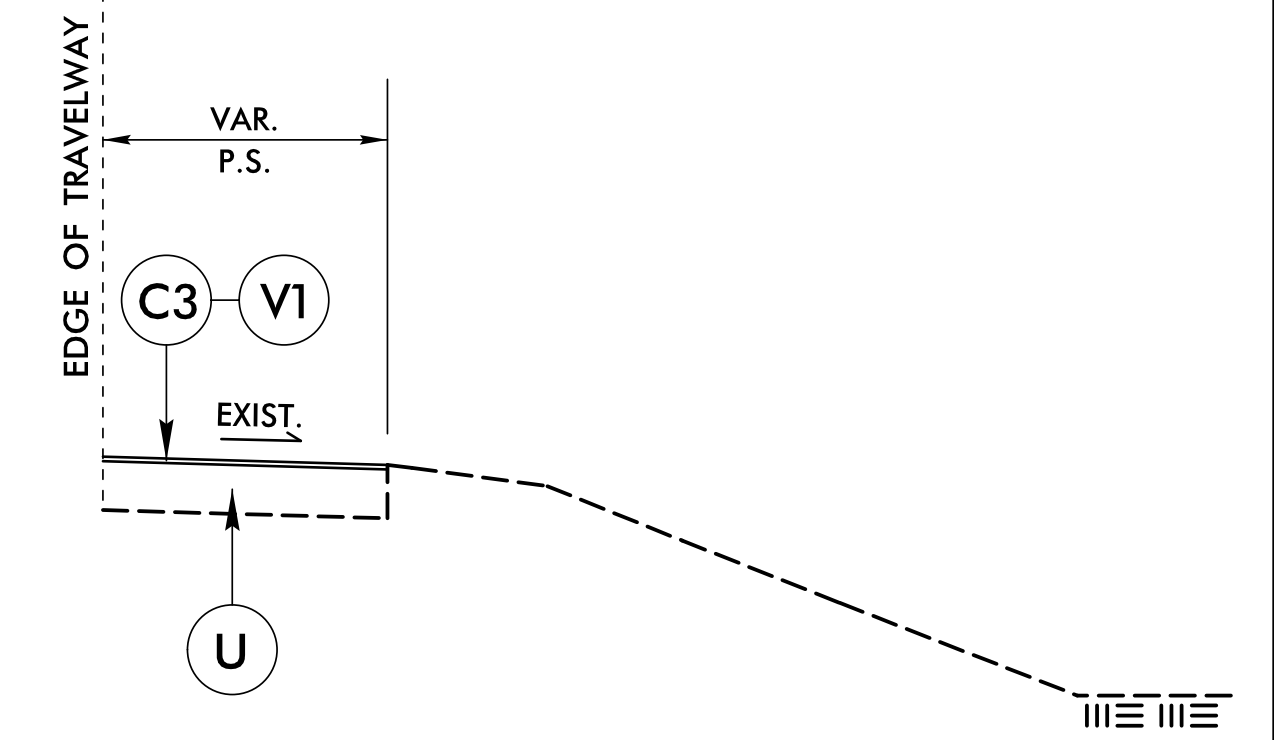


LINE	STATIONS
-L-	22+16.36 to 25+16.94 RT
-L-	31+14.46 to 32+93.80 RT



TYPICAL SECTION NO. 6

USE TYPICAL SECTION NO. 6 AS FOLLOWS:
 FROM -L- STA. 17+59.45 TO 22+00.00
 FROM -L- STA. 34+50.00 TO 38+12.09



TYPICAL SECTION NO. 6A

USE FOR SHOULDER SECTION:
 FROM -L- STA. 34+50.00 TO 38+12.09

PROJECT REFERENCE NO. B-4786	SHEET NO. 2A-2
ROADWAY DESIGN ENGINEER MARCUS LOWERY 027418	PAVEMENT DESIGN ENGINEER CLAYTON S. MORRISON 022896
2/18/2022 11:46 AM EST	2/18/2022 11:55 AM PST
DOCUMENT NOT CONSIDERED FINAL UNLESS ALL SIGNATURES COMPLETED	
TGS ENGINEERS 706 HILLSBOROUGH ST. SUITE 200 RALEIGH, NC 27603 PH (919) 773-8887 CORP. LICENSE NO.: C-0275	

C1	3" S9.5C
C2	VAR. S9.5C
C3	1½" S9.5C
C4	2" S9.5C
D1	3" I19.5C
D2	VAR. I19.0C
E1	4" B25.0C
E2	VAR. B25.0C
R1	2'-6" C & G
R2	EXIST. C & G
R3	SBG
T	EARTH MATERIAL
U	EXIST. PAVEMENT
V1	1½" MILLING
V2	0" to 3" MILLING
W	WEDGING

P:\872022\1872022-0001\Roadway\Proj\B-4786_rdy_tjg.dgn
 User: tjg
 2/18/2022 11:46 AM