

RETAINING WALL NO. 1

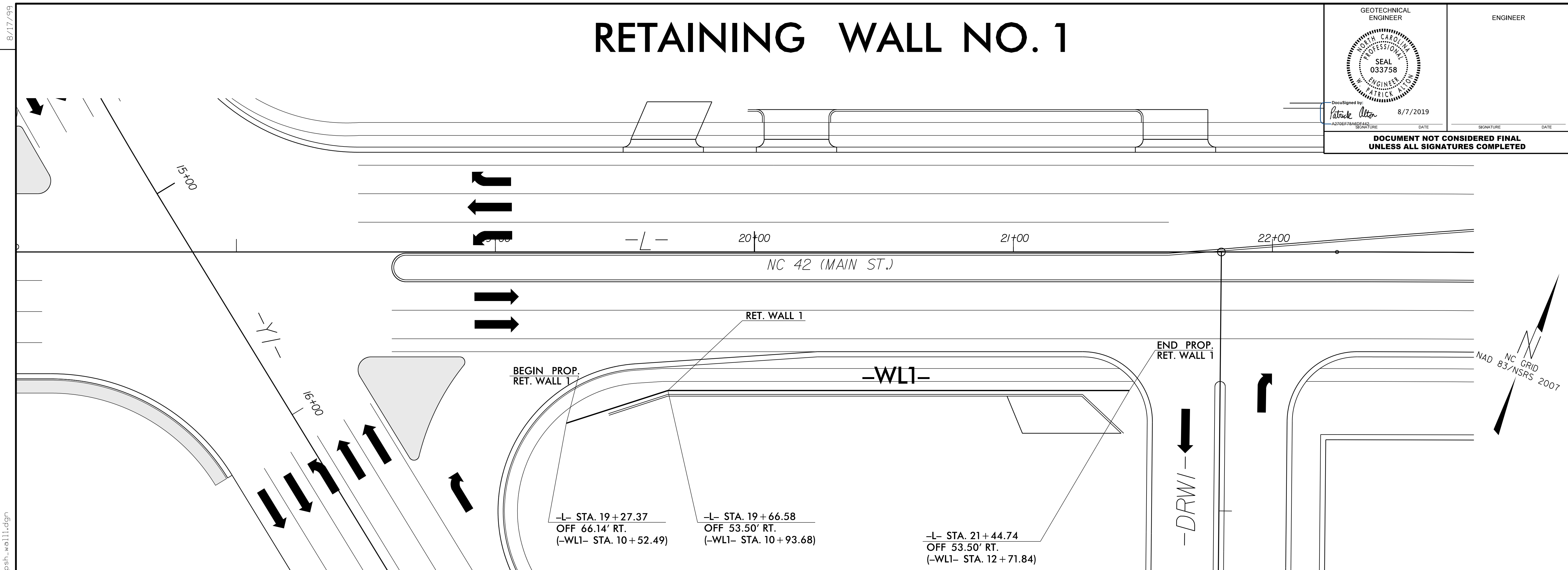
GEOTECHNICAL ENGINEER

ENGINEER

DocuSigned by:
Patrick Altor
8/7/2019

DATE SIGNATURE DATE

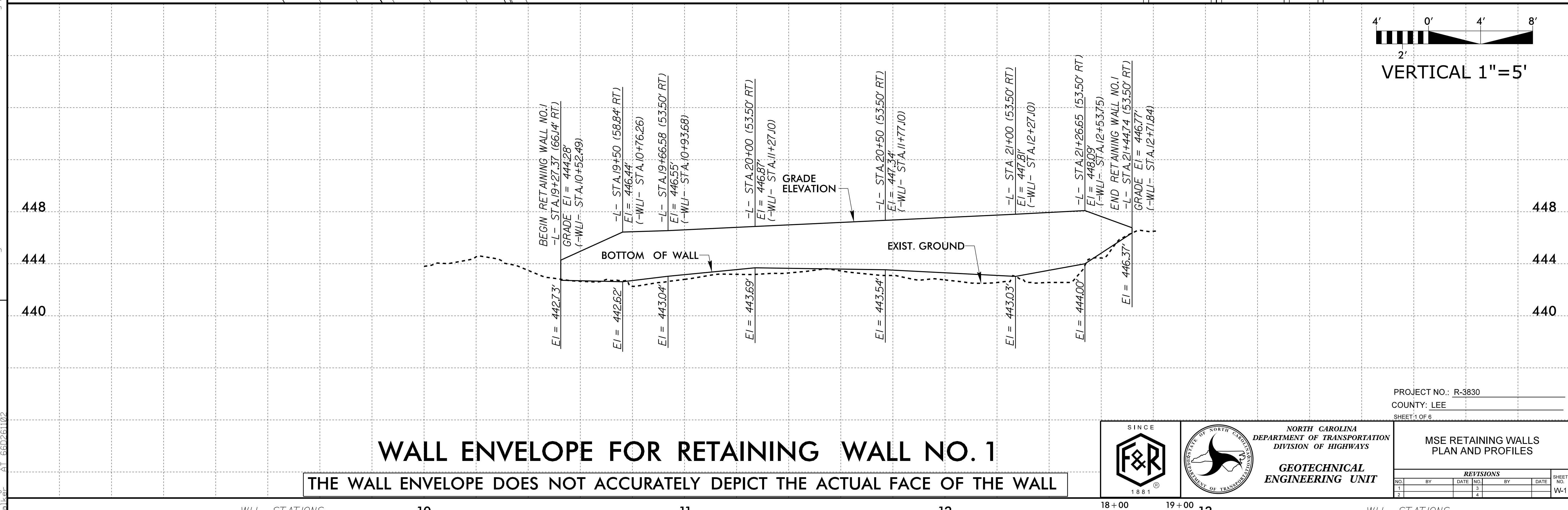
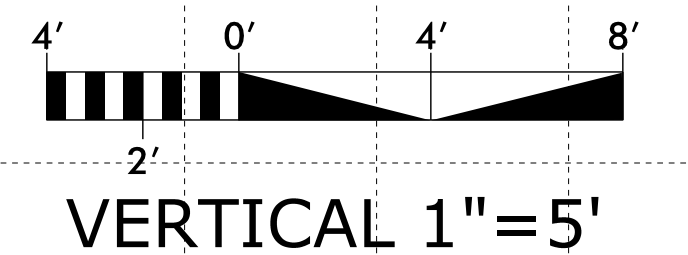
DOCUMENT NOT CONSIDERED FINAL UNLESS ALL SIGNATURES COMPLETED



-L- STA. 19+27.37
OFF 66.14' RT.
(-WLI- STA. 10+52.49)

-L- STA. 19+66.58
OFF 53.50' RT.
(-WLI- STA. 10+93.68)

-L- STA. 21+44.74
OFF 53.50' RT.
(-WLI- STA. 12+71.84)



WALL ENVELOPE FOR RETAINING WALL NO. 1

THE WALL ENVELOPE DOES NOT ACCURATELY DEPICT THE ACTUAL FACE OF THE WALL

SINCE 1881

NORTH CAROLINA DEPARTMENT OF TRANSPORTATION DIVISION OF HIGHWAYS
GEOTECHNICAL ENGINEERING UNIT

PROJECT NO.: R-3830
COUNTY: LEE
SHEET 1 OF 6

MSE RETAINING WALLS PLAN AND PROFILES

REVISIONS					
NO.	BY	DATE	NO.	BY	DATE
1			3		
2			4		

SHEET NO. WV-1

-WLI- STATIONS 10 11 12 13 -WLI- STATIONS