



PROJECT REFERENCE NO. R-3830	SHEET NO. UC-25
DESIGNED BY: DLH	
DRAWN BY: WW, MJ, BB	
CHECKED BY: DLH	
APPROVED BY:	
REVISED:	
NORTH CAROLINA DEPARTMENT OF TRANSPORTATION	
UTILITIES ENGINEERING SEC.	
PHONE: (919)707-6690	UTILITY CONSTRUCTION PLANS ONLY
FAX: (919)250-4151	

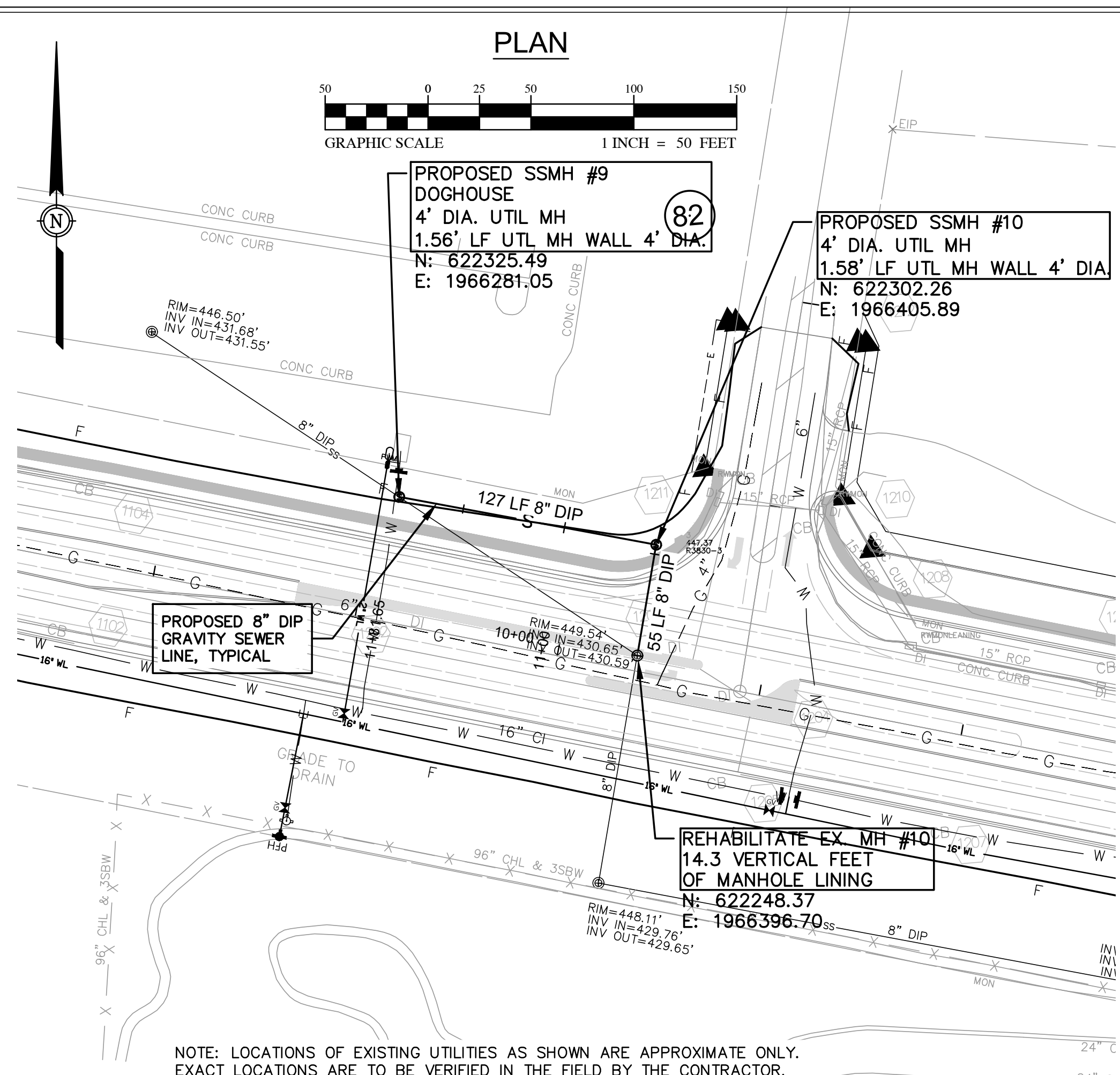
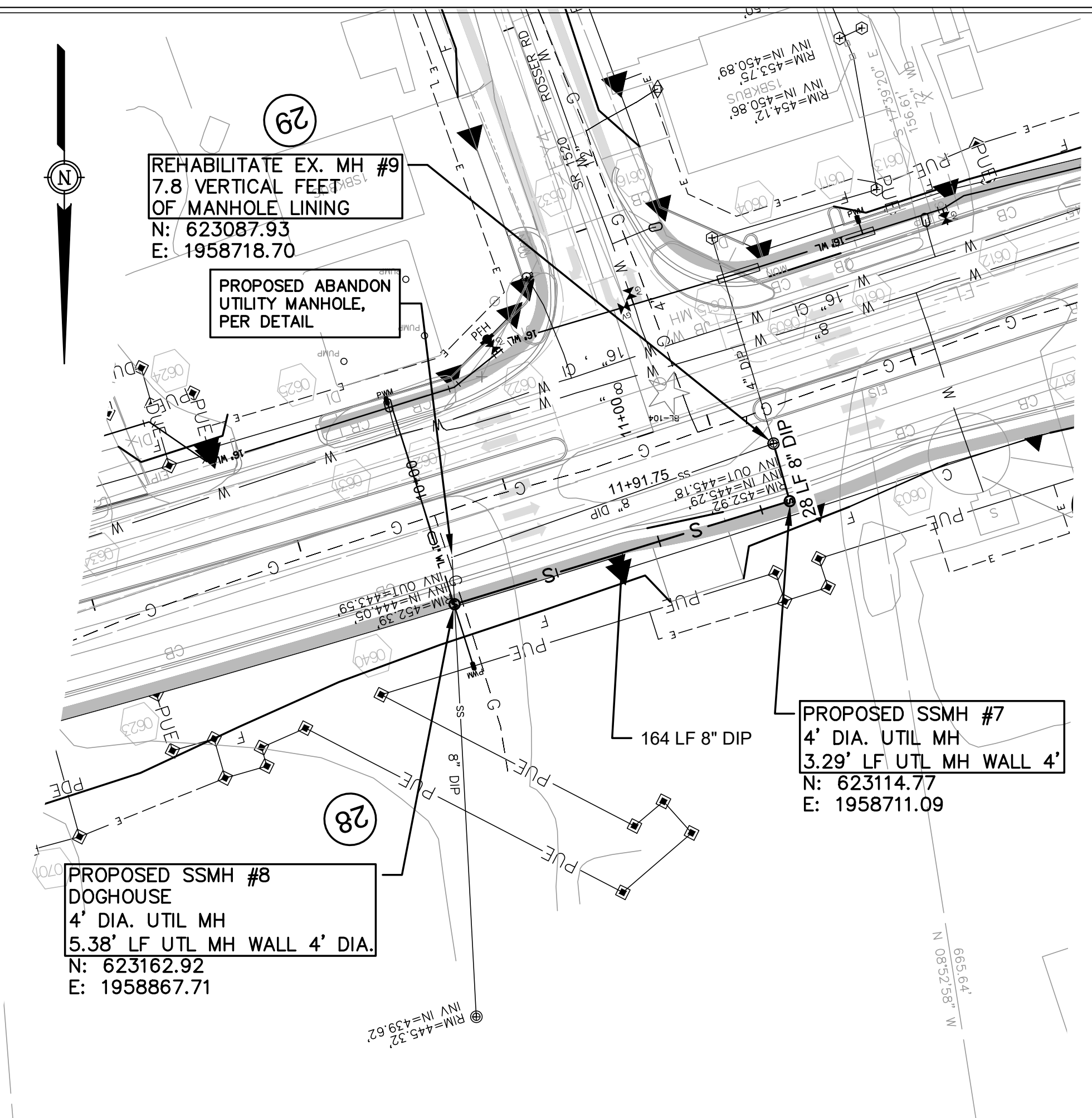
**UTILITY CONSTRUCTION**

**DOCUMENT NOT CONSIDERED FINAL UNLESS ALL SIGNATURES COMPLETED**

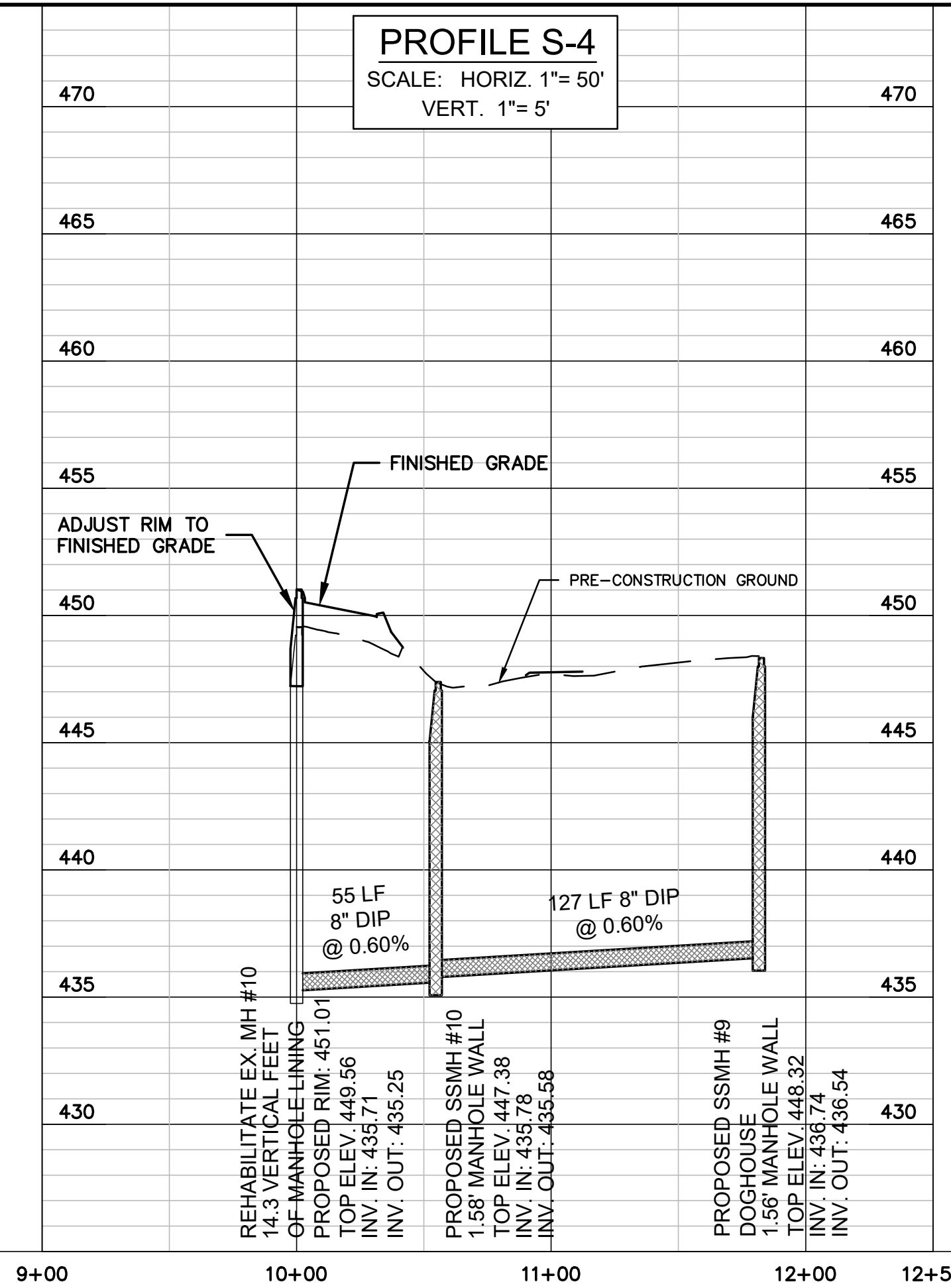
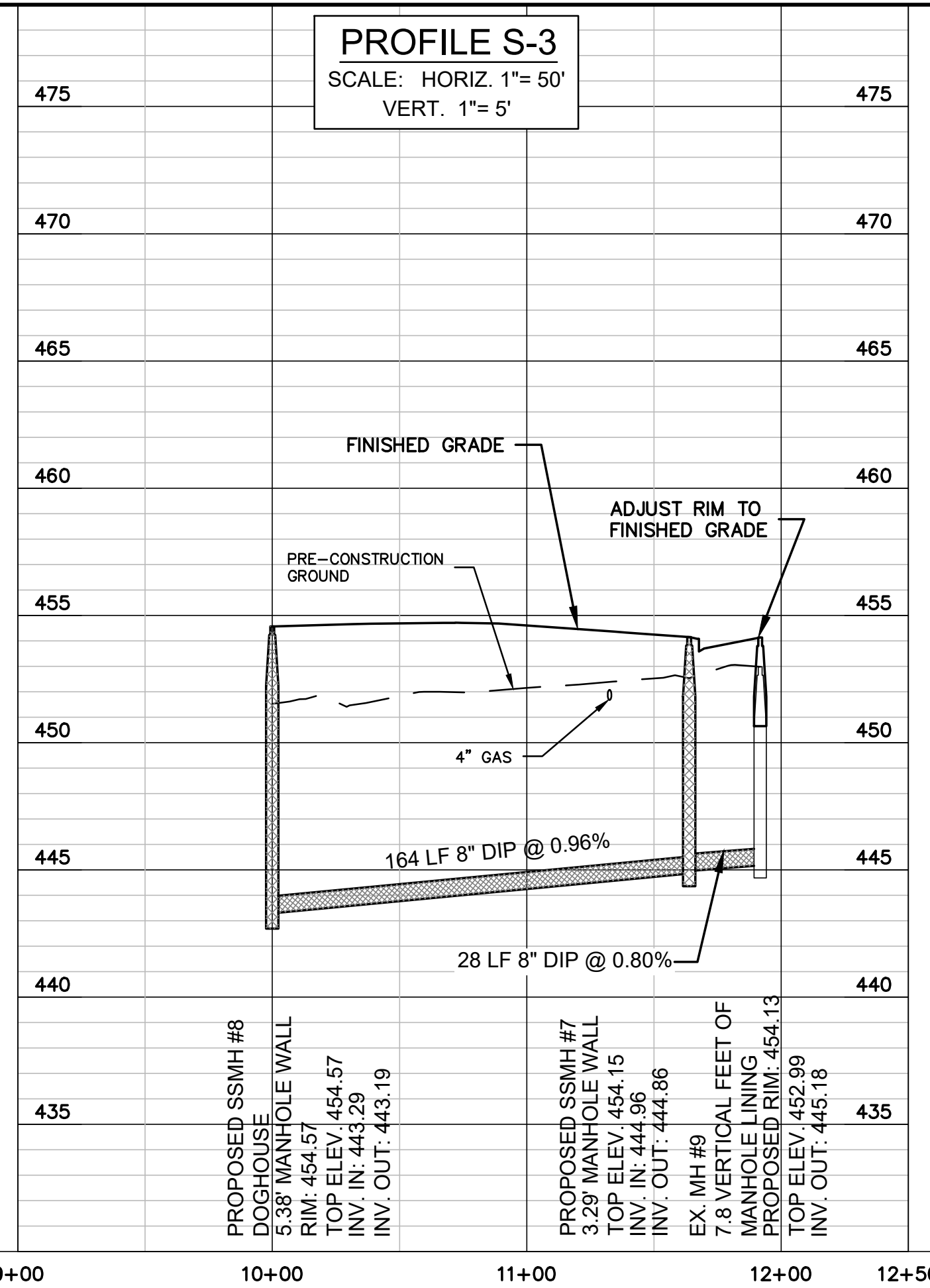
**FINAL DESIGN FOR REVIEW PURPOSES ONLY NOT RELEASED FOR CONSTRUCTION**

- NOTES:
- REHABILITATION OF EXISTING MANHOLES SHALL BE IN ACCORDANCE WITH SPECIFICATION SECTION 332765.
  - ALL SERVICES SHALL BE RECONNECTED TO CIPP BY EXCAVATION WITH SADDLE DIRECTLY TO CIPP.
  - EXISTING VCP OR CAST IRON SERVICES SHALL BE REPLACED TO RIGHT-OF-WAY LINE AS NOTED.
  - FOLLOWING CONSTRUCTION AND CERTIFICATION OF NEW SEWER LINE, EXISTING SEWER TO BE ABANDONED SHALL BE ABANDONED AND PLUGGED AT MANHOLES PER NCDOT STANDARDS.

PROPOSED 374 LF OF 8" GRAVITY SEWER  
ABANDON EXISTING 8" GRAVITY SEWER SHEET UC-25  
TOTAL LENGTH = 315 LF



NOTE: LOCATIONS OF EXISTING UTILITIES AS SHOWN ARE APPROXIMATE ONLY. EXACT LOCATIONS ARE TO BE VERIFIED IN THE FIELD BY THE CONTRACTOR.



REVISIONS