



PROJECT REFERENCE NO. R-3830	SHEET NO. UC-23
DESIGNED BY: DLH	
DRAWN BY: WW, MJ, BB	
CHECKED BY: DLH	
APPROVED BY:	
REVISED:	NORTH CAROLINA DEPARTMENT OF TRANSPORTATION UTILITIES ENGINEERING SEC. PHONE: (919)707-6690 FAX: (919)250-4151
McGill Associates, P.A. 5 Regional Circle, Suite A Pinehurst, NC 28374 Tel: 910-295-3159 Fax: 910-295-3647 www.mcgillassociates.com License No. C-0459	UTILITY CONSTRUCTION PLANS ONLY

UTILITY CONSTRUCTION

DOCUMENT NOT CONSIDERED FINAL
UNLESS ALL SIGNATURES COMPLETED

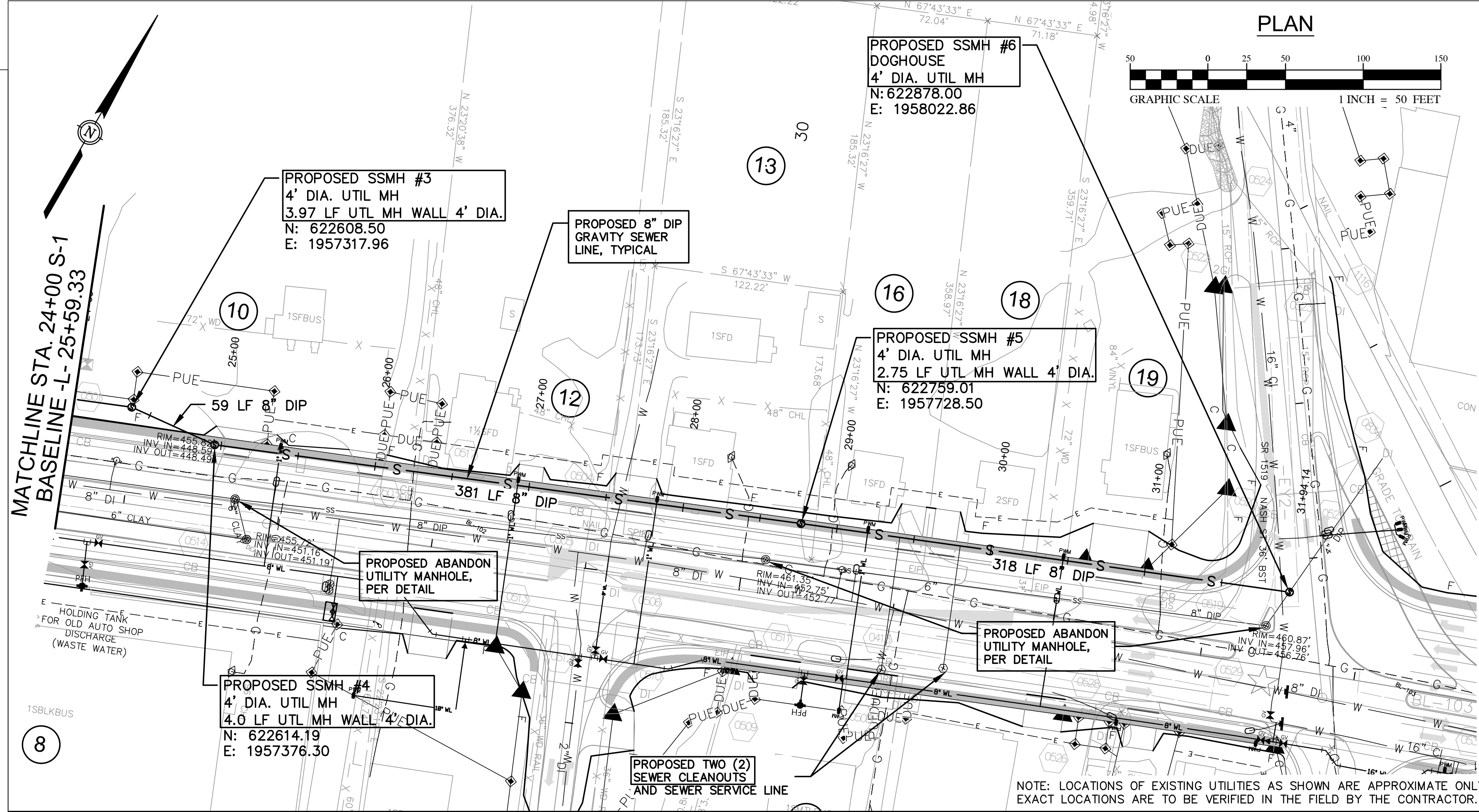
FINAL DESIGN
FOR REVIEW PURPOSES ONLY
NOT RELEASED FOR CONSTRUCTION

- NOTES:
- REHABILITATION OF EXISTING MANHOLES SHALL BE IN ACCORDANCE WITH SPECIFICATION SECTION 332765.
 - ALL SERVICES SHALL BE RECONNECTED TO CIPP BY EXCAVATION WITH SADDLE DIRECTLY TO CIPP.
 - EXISTING VCP OR CAST IRON SERVICES SHALL BE REPLACED TO RIGHT-OF-WAY LINE AS NOTED.
 - FOLLOWING CONSTRUCTION AND CERTIFICATION OF NEW SEWER LINE, EXISTING SEWER TO BE ABANDONED SHALL BE ABANDONED AND PLUGGED AT MANHOLES PER NCDOT STANDARDS.

PROPOSED 796 LF OF 8" GRAVITY SEWER
 ABANDON EXISTING 8" GRAVITY SEWER
 SHEET UC-23
 TOTAL LENGTH = 805 LF

ABANDON EXISTING 6" GRAVITY SEWER
 SHEET UC-23
 TOTAL LENGTH = 185 LF

PROPOSED 166 LF OF SEWER SERVICE LINE



REVISIONS

