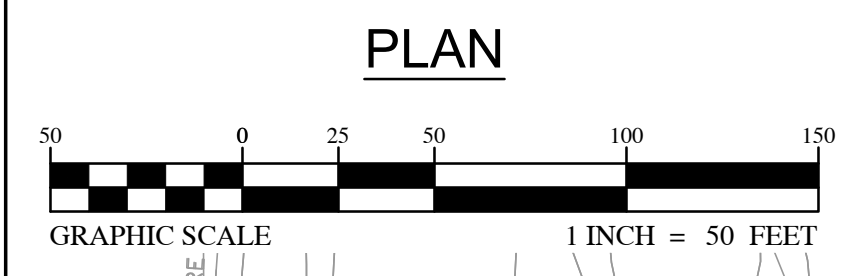


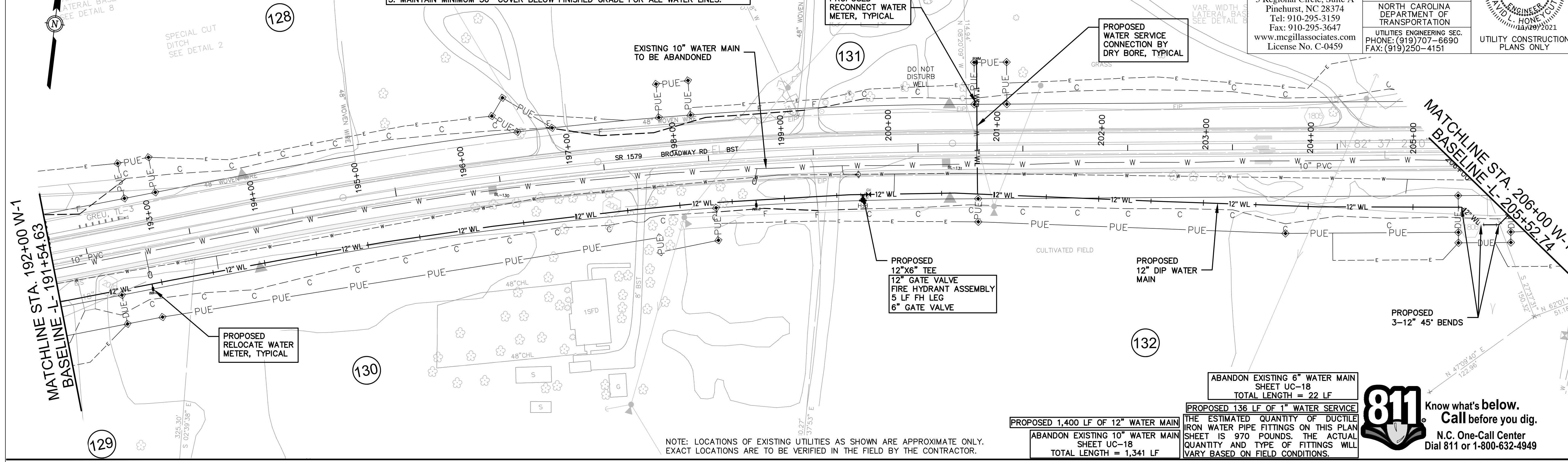
VAR. WIDTH SPECIAL LATERAL BASE DITCH SEE DETAIL 8
SPECIAL CUT DITCH SEE DETAIL 2

- NOTES:**
1. RELOCATE ALL EXISTING WATER LINE SERVICES TO THE NEW WATER LINE. FOLLOW CITY OF SANFORD STANDARD SERVICE CONNECTION DETAILS. COORDINATE SERVICE TIE OVER WITH PROPERTY OWNER AND CITY OF SANFORD.
 2. PROVIDE 18" MINIMUM VERTICAL CLEARANCE AT ALL DRAINAGE SYSTEM CROSSINGS.
 3. ABANDON WATER LINE IN LOCATIONS SHOWN. ABANDONMENT INCLUDES ALL FITTINGS AND APPURTENANCES. ABANDONMENT OF THE WATER LINE TO BE IN ACCORDANCE WITH THE CITY OF SANFORD'S AND NCDOT'S REQUIREMENTS.
 4. ALL ABANDONED LINES 8" OR LARGER SHALL BE FILLED WITH CDF.
 5. MAINTAIN MINIMUM 36" COVER BELOW FINISHED GRADE FOR ALL WATER LINES.



McGill Associates, P.A.
5 Regional Circle, Suite A
Pinehurst, NC 28374
Tel: 910-295-3159
Fax: 910-295-3647
www.mcgillassociates.com
License No. C-0459

PROJECT REFERENCE NO. R-3830	SHEET NO. UC-18
DESIGNED BY: DLH	
DRAWN BY: WW, MJ, BB	
CHECKED BY: DLH	
APPROVED BY:	UTILITY CONSTRUCTION PLANS ONLY
REVISED:	
NORTH CAROLINA DEPARTMENT OF TRANSPORTATION UTILITIES ENGINEERING SEC. PHONE: (919)707-6690 FAX: (919)250-4151	



MATCHLINE STA. 192+00 W-1
BASELINE L- 191+54.63

MATCHLINE STA. 206+00 W-1
BASELINE L- 205+52.74

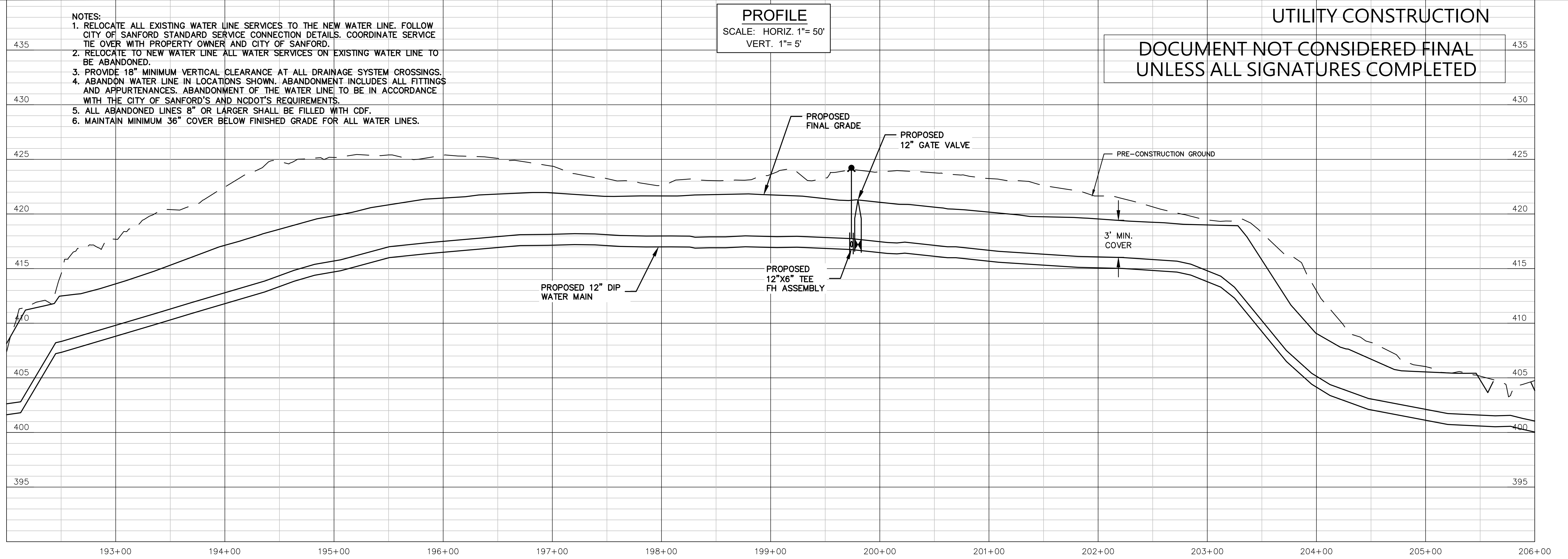
PROPOSED 1,400 LF OF 12" WATER MAIN
ABANDON EXISTING 10" WATER MAIN SHEET UC-18
TOTAL LENGTH = 1,341 LF

ABANDON EXISTING 6" WATER MAIN SHEET UC-18
TOTAL LENGTH = 22 LF
PROPOSED 136 LF OF 1" WATER SERVICE
THE ESTIMATED QUANTITY OF DUCTILE IRON WATER PIPE FITTINGS ON THIS PLAN SHEET IS 970 POUNDS. THE ACTUAL QUANTITY AND TYPE OF FITTINGS WILL VARY BASED ON FIELD CONDITIONS.

811 Know what's below.
Call before you dig.
N.C. One-Call Center
Dial 811 or 1-800-632-4949

NOTE: LOCATIONS OF EXISTING UTILITIES AS SHOWN ARE APPROXIMATE ONLY. EXACT LOCATIONS ARE TO BE VERIFIED IN THE FIELD BY THE CONTRACTOR.

REVISIONS



- NOTES:**
1. RELOCATE ALL EXISTING WATER LINE SERVICES TO THE NEW WATER LINE. FOLLOW CITY OF SANFORD STANDARD SERVICE CONNECTION DETAILS. COORDINATE SERVICE TIE OVER WITH PROPERTY OWNER AND CITY OF SANFORD.
 2. RELOCATE TO NEW WATER LINE ALL WATER SERVICES ON EXISTING WATER LINE TO BE ABANDONED.
 3. PROVIDE 18" MINIMUM VERTICAL CLEARANCE AT ALL DRAINAGE SYSTEM CROSSINGS.
 4. ABANDON WATER LINE IN LOCATIONS SHOWN. ABANDONMENT INCLUDES ALL FITTINGS AND APPURTENANCES. ABANDONMENT OF THE WATER LINE TO BE IN ACCORDANCE WITH THE CITY OF SANFORD'S AND NCDOT'S REQUIREMENTS.
 5. ALL ABANDONED LINES 8" OR LARGER SHALL BE FILLED WITH CDF.
 6. MAINTAIN MINIMUM 36" COVER BELOW FINISHED GRADE FOR ALL WATER LINES.

UTILITY CONSTRUCTION

**DOCUMENT NOT CONSIDERED FINAL
UNLESS ALL SIGNATURES COMPLETED**