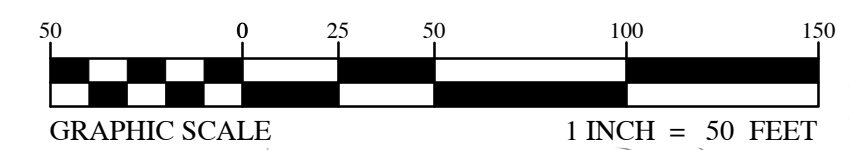


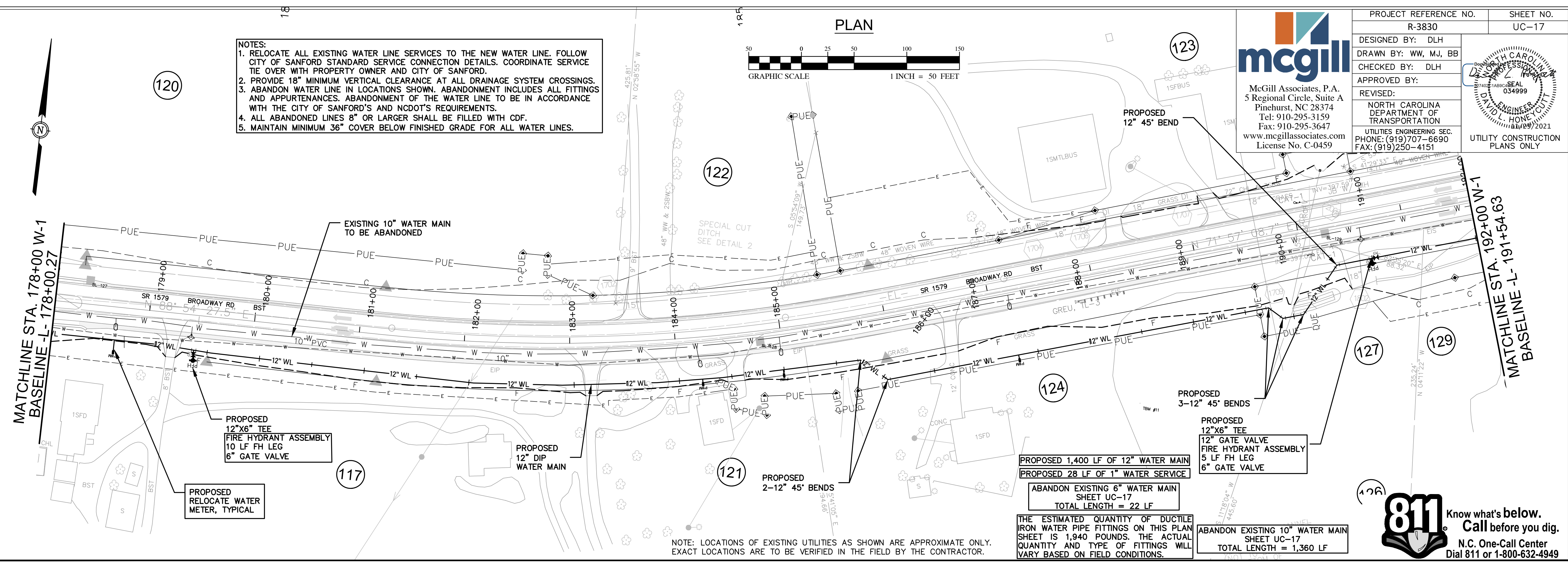
- NOTES:
1. RELOCATE ALL EXISTING WATER LINE SERVICES TO THE NEW WATER LINE. FOLLOW CITY OF SANFORD STANDARD SERVICE CONNECTION DETAILS. COORDINATE SERVICE TIE OVER WITH PROPERTY OWNER AND CITY OF SANFORD.
  2. PROVIDE 18" MINIMUM VERTICAL CLEARANCE AT ALL DRAINAGE SYSTEM CROSSINGS.
  3. ABANDON WATER LINE IN LOCATIONS SHOWN. ABANDONMENT INCLUDES ALL FITTINGS AND APPURTENANCES. ABANDONMENT OF THE WATER LINE TO BE IN ACCORDANCE WITH THE CITY OF SANFORD'S AND NCDOT'S REQUIREMENTS.
  4. ALL ABANDONED LINES 8" OR LARGER SHALL BE FILLED WITH CDF.
  5. MAINTAIN MINIMUM 36" COVER BELOW FINISHED GRADE FOR ALL WATER LINES.

### PLAN



McGill Associates, P.A.  
5 Regional Circle, Suite A  
Pinehurst, NC 28374  
Tel: 910-295-3159  
Fax: 910-295-3647  
www.mcgillassociates.com  
License No. C-0459

PROJECT REFERENCE NO. R-3830	SHEET NO. UC-17
DESIGNED BY: DLH	
DRAWN BY: WW, MJ, BB	
CHECKED BY: DLH	
APPROVED BY:	REVISOR:
	NORTH CAROLINA DEPARTMENT OF TRANSPORTATION
	UTILITIES ENGINEERING SEC. PHONE: (919) 707-6690 FAX: (919) 250-4151
	UTILITY CONSTRUCTION PLANS ONLY



PROPOSED 1,400 LF OF 12" WATER MAIN  
PROPOSED 28 LF OF 1" WATER SERVICE  
ABANDON EXISTING 6" WATER MAIN  
SHEET UC-17  
TOTAL LENGTH = 22 LF

THE ESTIMATED QUANTITY OF DUCTILE IRON WATER PIPE FITTINGS ON THIS PLAN SHEET IS 1,940 POUNDS. THE ACTUAL QUANTITY AND TYPE OF FITTINGS WILL VARY BASED ON FIELD CONDITIONS.

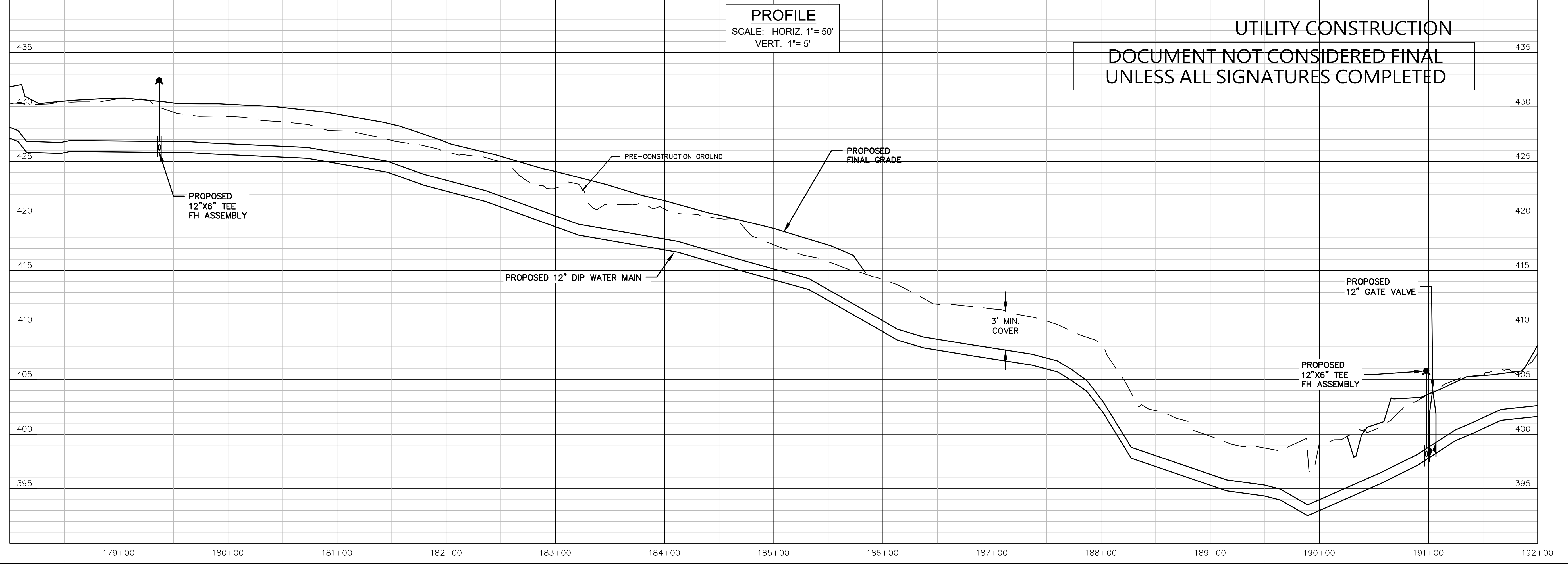
ABANDON EXISTING 10" WATER MAIN  
SHEET UC-17  
TOTAL LENGTH = 1,360 LF

NOTE: LOCATIONS OF EXISTING UTILITIES AS SHOWN ARE APPROXIMATE ONLY. EXACT LOCATIONS ARE TO BE VERIFIED IN THE FIELD BY THE CONTRACTOR.

Know what's below.  
Call before you dig.  
N.C. One-Call Center  
Dial 811 or 1-800-632-4949

### PROFILE

SCALE: HORIZ. 1"= 50'  
VERT. 1"= 5'



UTILITY CONSTRUCTION  
DOCUMENT NOT CONSIDERED FINAL  
UNLESS ALL SIGNATURES COMPLETED

REVISIONS