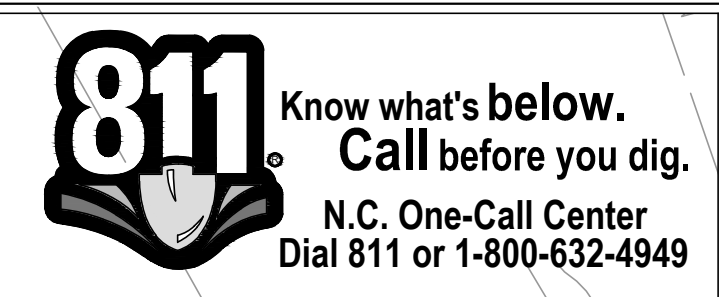
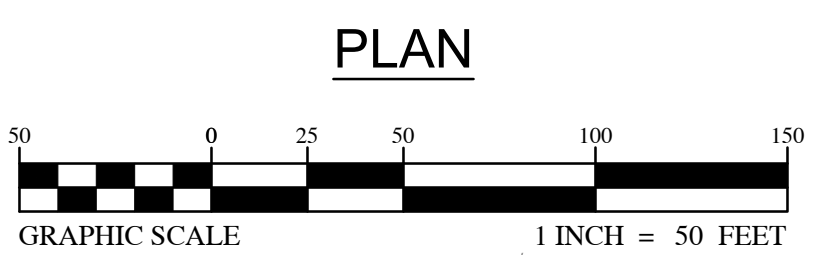
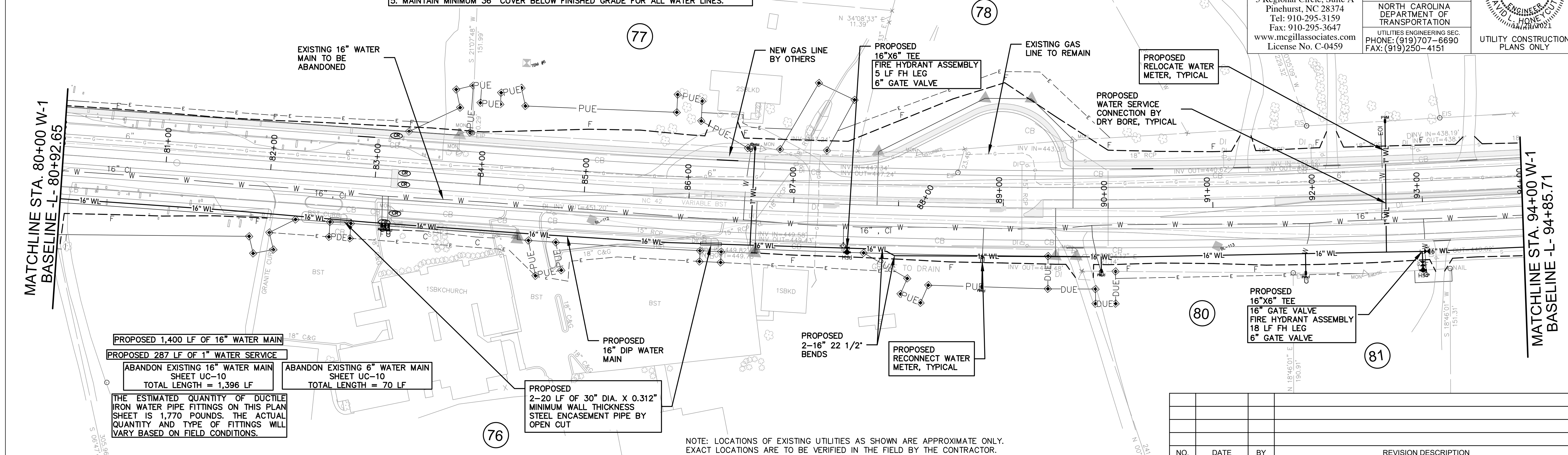


- NOTES:
1. RELOCATE ALL EXISTING WATER LINE SERVICES TO THE NEW WATER LINE. FOLLOW CITY OF SANFORD STANDARD SERVICE CONNECTION DETAILS. COORDINATE SERVICE TIE OVER WITH PROPERTY OWNER AND CITY OF SANFORD.
 2. PROVIDE 18" MINIMUM VERTICAL CLEARANCE AT ALL DRAINAGE SYSTEM CROSSINGS.
 3. ABANDON WATER LINE IN LOCATIONS SHOWN. ABANDONMENT INCLUDES ALL FITTINGS AND APPURTENANCES. ABANDONMENT OF THE WATER LINE TO BE IN ACCORDANCE WITH THE CITY OF SANFORD'S AND NCDOT'S REQUIREMENTS.
 4. ALL ABANDONED LINES 8" OR LARGER SHALL BE FILLED WITH CDF.
 5. MAINTAIN MINIMUM 36" COVER BELOW FINISHED GRADE FOR ALL WATER LINES.



mcgill
 McGill Associates, P.A.
 5 Regional Circle, Suite A
 Pinehurst, NC 28374
 Tel: 910-295-3159
 Fax: 910-295-3647
 www.mcgillassociates.com
 License No. C-0459

PROJECT REFERENCE NO. R-3830	SHEET NO. UC-10
DESIGNED BY: DLH	
DRAWN BY: WW, MJ, BB	
CHECKED BY: DLH	
APPROVED BY:	UTILITIES ENGINEERING SEC. PHONE: (919) 707-6690 FAX: (919) 250-4151
REVISIONS:	UTILITY CONSTRUCTION PLANS ONLY



- PROPOSED 1,400 LF OF 16" WATER MAIN
- PROPOSED 287 LF OF 1" WATER SERVICE
- ABANDON EXISTING 16" WATER MAIN SHEET UC-10 TOTAL LENGTH = 1,396 LF
- ABANDON EXISTING 6" WATER MAIN SHEET UC-10 TOTAL LENGTH = 70 LF

THE ESTIMATED QUANTITY OF DUCTILE IRON WATER PIPE FITTINGS ON THIS PLAN SHEET IS 1,770 POUNDS. THE ACTUAL QUANTITY AND TYPE OF FITTINGS WILL VARY BASED ON FIELD CONDITIONS.

PROPOSED 2-20 LF OF 30" DIA. X 0.312" MINIMUM WALL THICKNESS STEEL ENCASEMENT PIPE BY OPEN CUT

NOTE: LOCATIONS OF EXISTING UTILITIES AS SHOWN ARE APPROXIMATE ONLY. EXACT LOCATIONS ARE TO BE VERIFIED IN THE FIELD BY THE CONTRACTOR.

NO.	DATE	BY	REVISION DESCRIPTION

REVISIONS

PROFILE W-1
 SCALE: HORIZ. 1"= 50'
 VERT. 1"= 5'

UTILITY CONSTRUCTION
 DOCUMENT NOT CONSIDERED FINAL
 UNLESS ALL SIGNATURES COMPLETED

