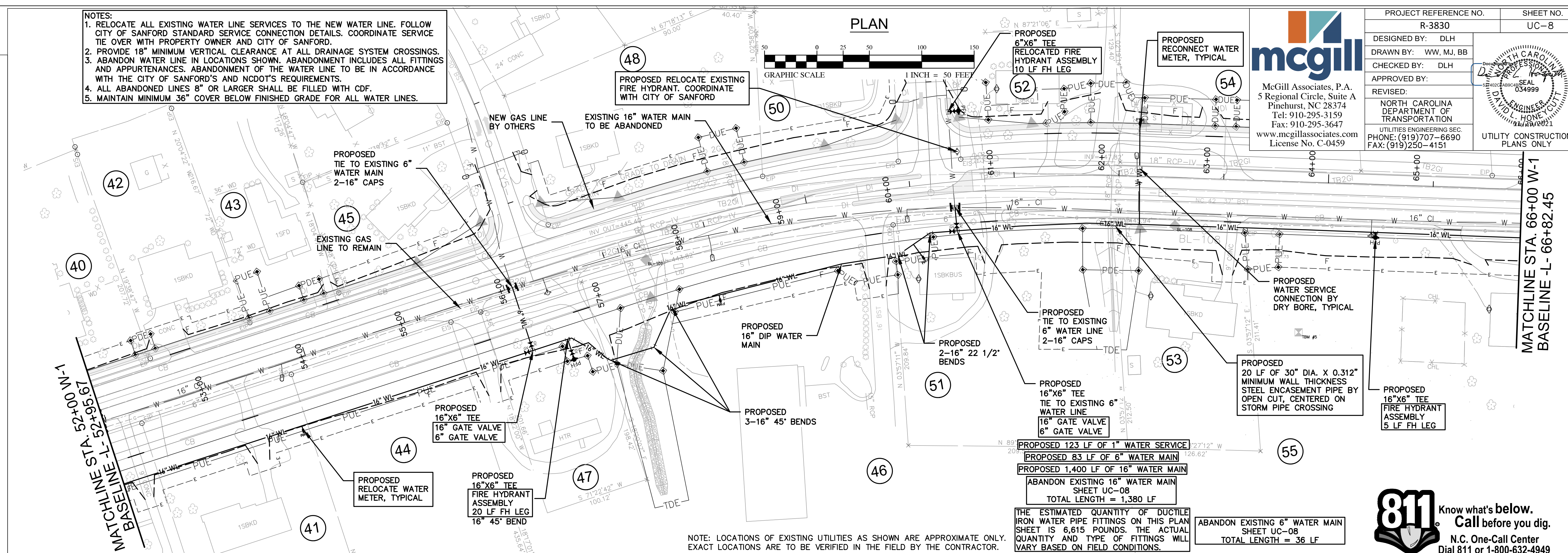
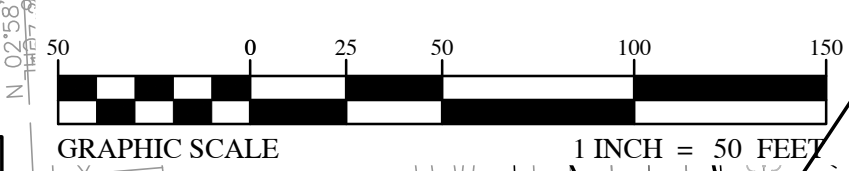


- NOTES:
1. RELOCATE ALL EXISTING WATER LINE SERVICES TO THE NEW WATER LINE. FOLLOW CITY OF SANFORD STANDARD SERVICE CONNECTION DETAILS. COORDINATE SERVICE TIE OVER WITH PROPERTY OWNER AND CITY OF SANFORD.
  2. PROVIDE 18" MINIMUM VERTICAL CLEARANCE AT ALL DRAINAGE SYSTEM CROSSINGS.
  3. ABANDON WATER LINE IN LOCATIONS SHOWN. ABANDONMENT INCLUDES ALL FITTINGS AND APPURTENANCES. ABANDONMENT OF THE WATER LINE TO BE IN ACCORDANCE WITH THE CITY OF SANFORD'S AND NCDOT'S REQUIREMENTS.
  4. ALL ABANDONED LINES 8" OR LARGER SHALL BE FILLED WITH CDF.
  5. MAINTAIN MINIMUM 36" COVER BELOW FINISHED GRADE FOR ALL WATER LINES.

### PLAN



**mcgill**  
 McGill Associates, P.A.  
 5 Regional Circle, Suite A  
 Pinehurst, NC 28374  
 Tel: 910-295-3159  
 Fax: 910-295-3647  
 www.mcgillassociates.com  
 License No. C-0459

PROJECT REFERENCE NO. R-3830	SHEET NO. UC-8
DESIGNED BY: DLH	
DRAWN BY: WW, MJ, BB	
CHECKED BY: DLH	
APPROVED BY:	REVISOR: NORTH CAROLINA DEPARTMENT OF TRANSPORTATION UTILITIES ENGINEERING SEC. PHONE: (919) 707-6690 FAX: (919) 250-4151
UTILITY CONSTRUCTION PLANS ONLY	

MATCHLINE STA. 52+00 TO 52+95.67  
 BASELINE L-1

MATCHLINE STA. 66+00 W-1  
 BASELINE L-66+82.45

REVISIONS

NOTE: LOCATIONS OF EXISTING UTILITIES AS SHOWN ARE APPROXIMATE ONLY. EXACT LOCATIONS ARE TO BE VERIFIED IN THE FIELD BY THE CONTRACTOR.

THE ESTIMATED QUANTITY OF DUCTILE IRON WATER PIPE FITTINGS ON THIS PLAN SHEET IS 6,615 POUNDS. THE ACTUAL QUANTITY AND TYPE OF FITTINGS WILL VARY BASED ON FIELD CONDITIONS.

ABANDON EXISTING 6" WATER MAIN SHEET UC-08  
 TOTAL LENGTH = 36 LF

**811** Know what's below.  
 Call before you dig.  
 N.C. One-Call Center  
 Dial 811 or 1-800-632-4949

### PROFILE W-1

SCALE: HORIZ. 1"= 50'  
 VERT. 1"= 5'

### UTILITY CONSTRUCTION

DOCUMENT NOT CONSIDERED FINAL  
 UNLESS ALL SIGNATURES COMPLETED

