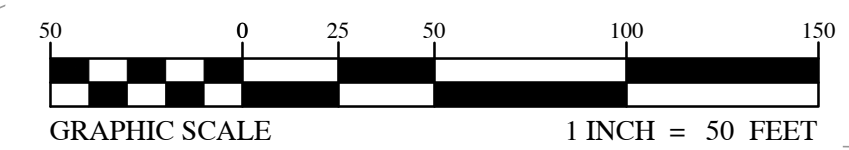
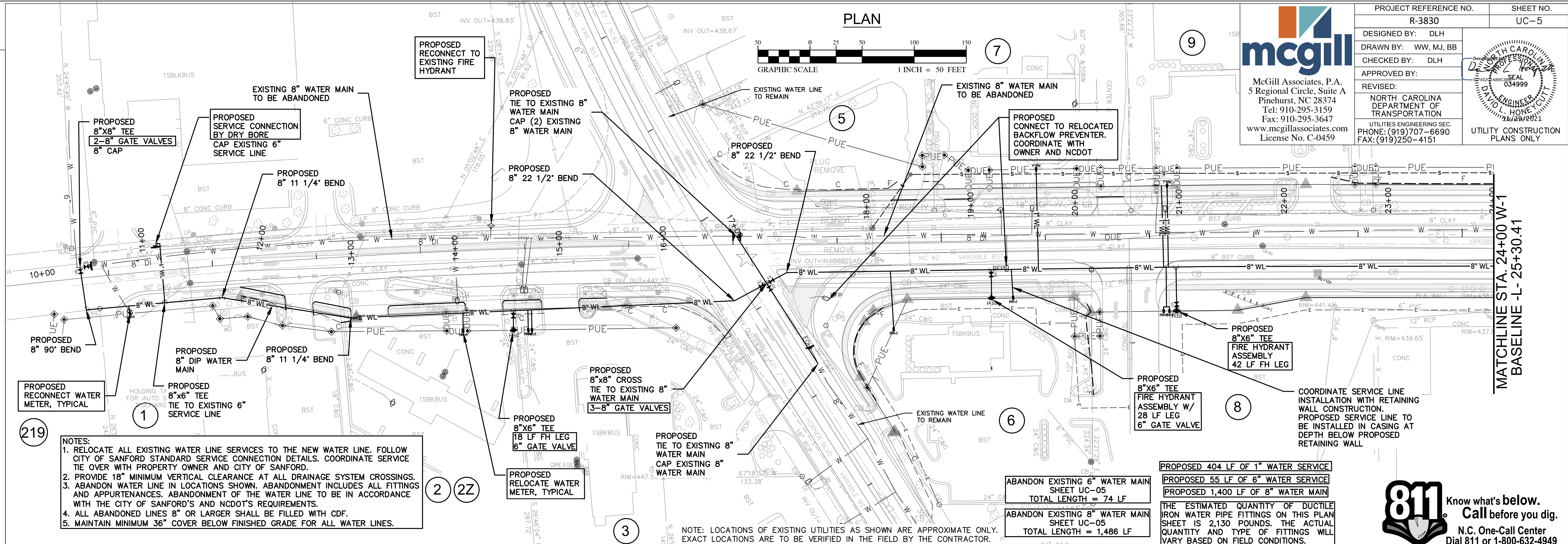


PLAN



	PROJECT REFERENCE NO.	R-3830	SHEET NO.	UC-5
	DESIGNED BY:	DLH		
	DRAWN BY:	WW, MJ, BB		
	CHECKED BY:	DLH		
	APPROVED BY:			
	REVISED:			
		NORTH CAROLINA DEPARTMENT OF TRANSPORTATION		
		UTILITIES ENGINEERING SEC. PHONE: (919)707-6690 FAX: (919)250-4151		
		UTILITY CONSTRUCTION PLANS ONLY		



- NOTES:**
1. RELOCATE ALL EXISTING WATER LINE SERVICES TO THE NEW WATER LINE. FOLLOW CITY OF SANFORD STANDARD SERVICE CONNECTION DETAILS. COORDINATE SERVICE TIE OVER WITH PROPERTY OWNER AND CITY OF SANFORD.
 2. PROVIDE 18" MINIMUM VERTICAL CLEARANCE AT ALL DRAINAGE SYSTEM CROSSINGS.
 3. ABANDON WATER LINE IN LOCATIONS SHOWN. ABANDONMENT INCLUDES ALL FITTINGS AND APPURTENANCES. ABANDONMENT OF THE WATER LINE TO BE IN ACCORDANCE WITH THE CITY OF SANFORD'S AND NCDOT'S REQUIREMENTS.
 4. ALL ABANDONED LINES 8" OR LARGER SHALL BE FILLED WITH CDF.
 5. MAINTAIN MINIMUM 36" COVER BELOW FINISHED GRADE FOR ALL WATER LINES.

ABANDON EXISTING 6" WATER MAIN SHEET UC-05 TOTAL LENGTH = 74 LF

ABANDON EXISTING 8" WATER MAIN SHEET UC-05 TOTAL LENGTH = 1,486 LF

PROPOSED 404 LF OF 1" WATER SERVICE

PROPOSED 55 LF OF 6" WATER SERVICE

PROPOSED 1,400 LF OF 8" WATER MAIN

THE ESTIMATED QUANTITY OF DUCTILE IRON WATER PIPE FITTINGS ON THIS PLAN SHEET IS 2,130 POUNDS. THE ACTUAL QUANTITY AND TYPE OF FITTINGS WILL VARY BASED ON FIELD CONDITIONS.

811 Know what's below. Call before you dig.
N.C. One-Call Center Dial 811 or 1-800-632-4949

PROFILE W-1

SCALE: HORIZ. 1"= 50'
VERT. 1"= 5'

WATER LINE INSTALLATION SHALL BE COORDINATED WITH RETAINING WALL CONSTRUCTION

UTILITY CONSTRUCTION

DOCUMENT NOT CONSIDERED FINAL UNLESS ALL SIGNATURES COMPLETED

