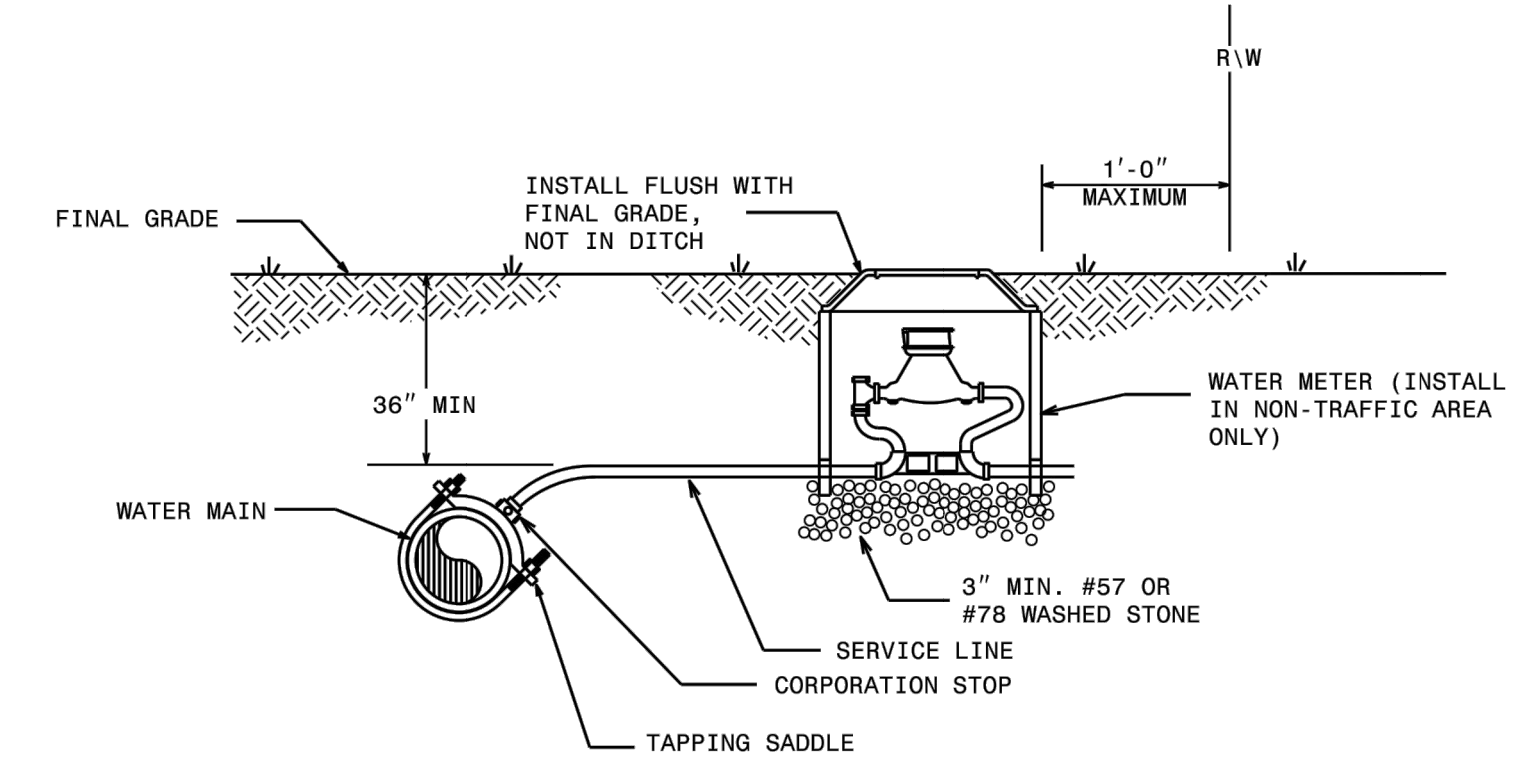


DOCUMENT NOT CONSIDERED FINAL
UNLESS ALL SIGNATURES COMPLETED

PROJECT REFERENCE NO. R-3830	SHEET NO. UC-03D
DESIGNED BY: MCW	DocuSigned by: <i>Michael Wicker</i> SEAL 11323 ENGINEER MICHAEL C. WICKER
DRAWN BY: PAP	
CHECKED BY: JWW	CFZCEAE2882C404
APPROVED BY:	
REVISED:	
NORTH CAROLINA DEPARTMENT OF TRANSPORTATION	
UTILITIES ENGINEERING SEC. PHONE: (919) 707-6690 FAX: (919) 250-4151	
5/12/2022	
UTILITY CONSTRUCTION	
 WithersRavenel Engineers Planners Surveyors 115 MacKenan Drive Cary, NC 27511 T: 919.469.3340 License #: C-0832 www.withersravenel.com	
DOCUMENT NOT CONSIDERED FINAL UNLESS ALL SIGNATURES COMPLETED	



NOTES:
1. THIS DETAIL SHOWS THE TYPICAL FINAL WATER METER CONFIGURATION AFTER INSTALLATION OF A PROPOSED WATER METER, RECONNECTION OF AN EXISTING WATER METER, OR RELOCATION OF A WATER METER.

STATE OF NORTH CAROLINA
DEPT. OF TRANSPORTATION
DIVISION OF HIGHWAYS
RALEIGH, N.C.

ROADWAY STANDARD DRAWING FOR
WATER METER

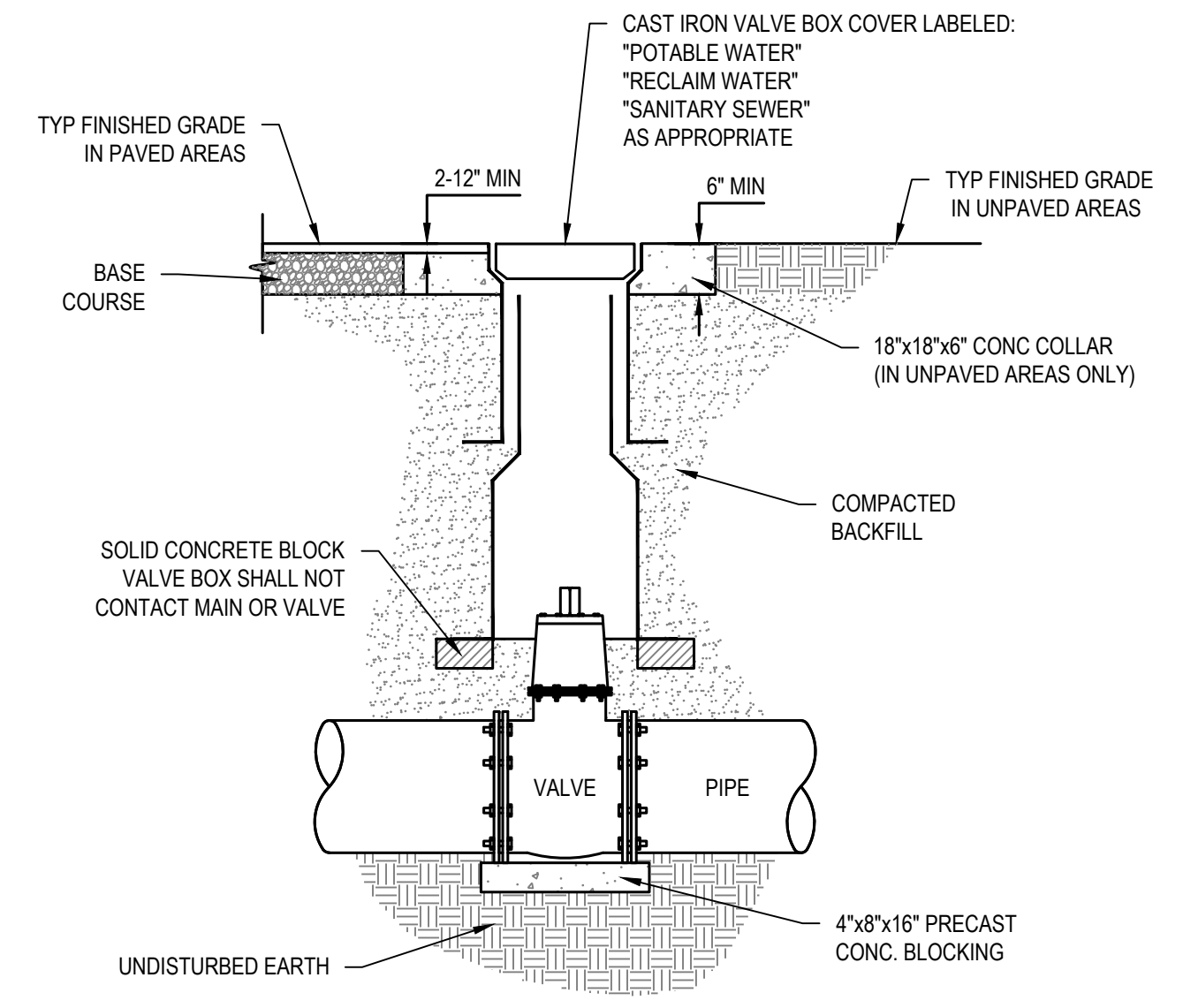
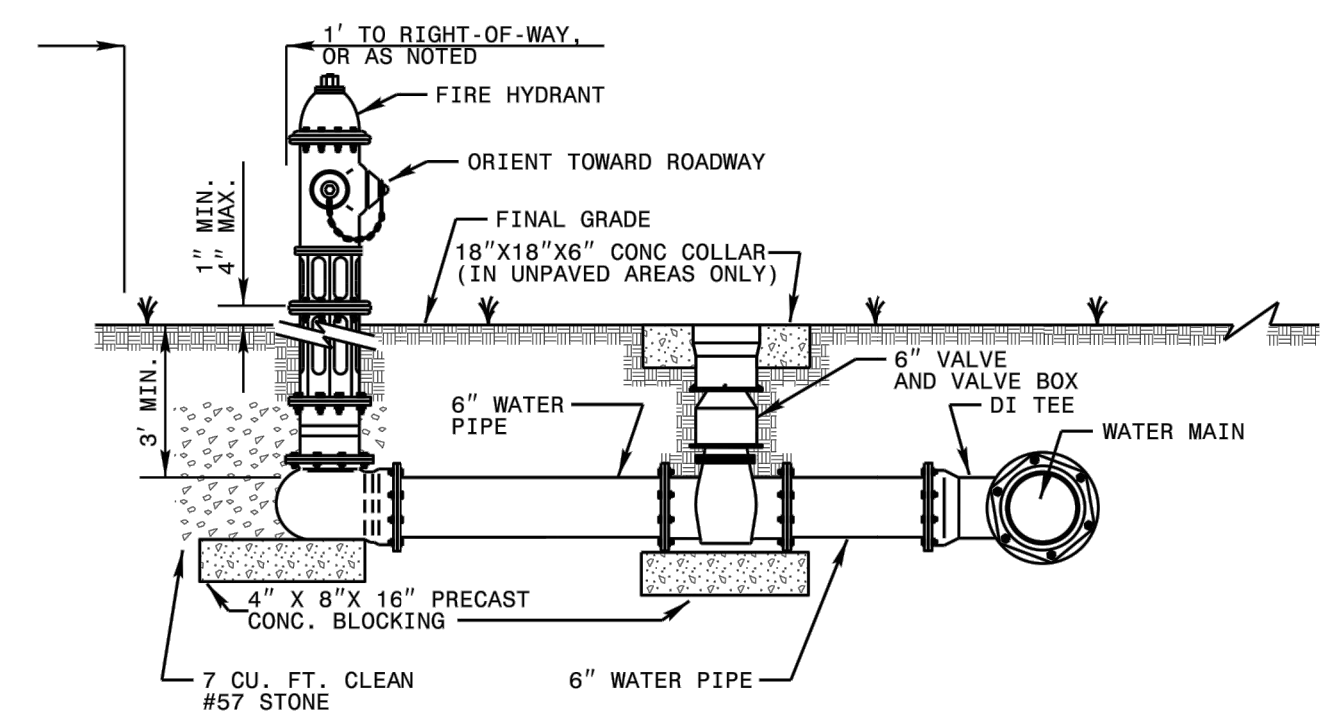
SHEET 1 OF 1
1515.01

STATE OF NORTH CAROLINA
DEPT. OF TRANSPORTATION
DIVISION OF HIGHWAYS
RALEIGH, N.C.

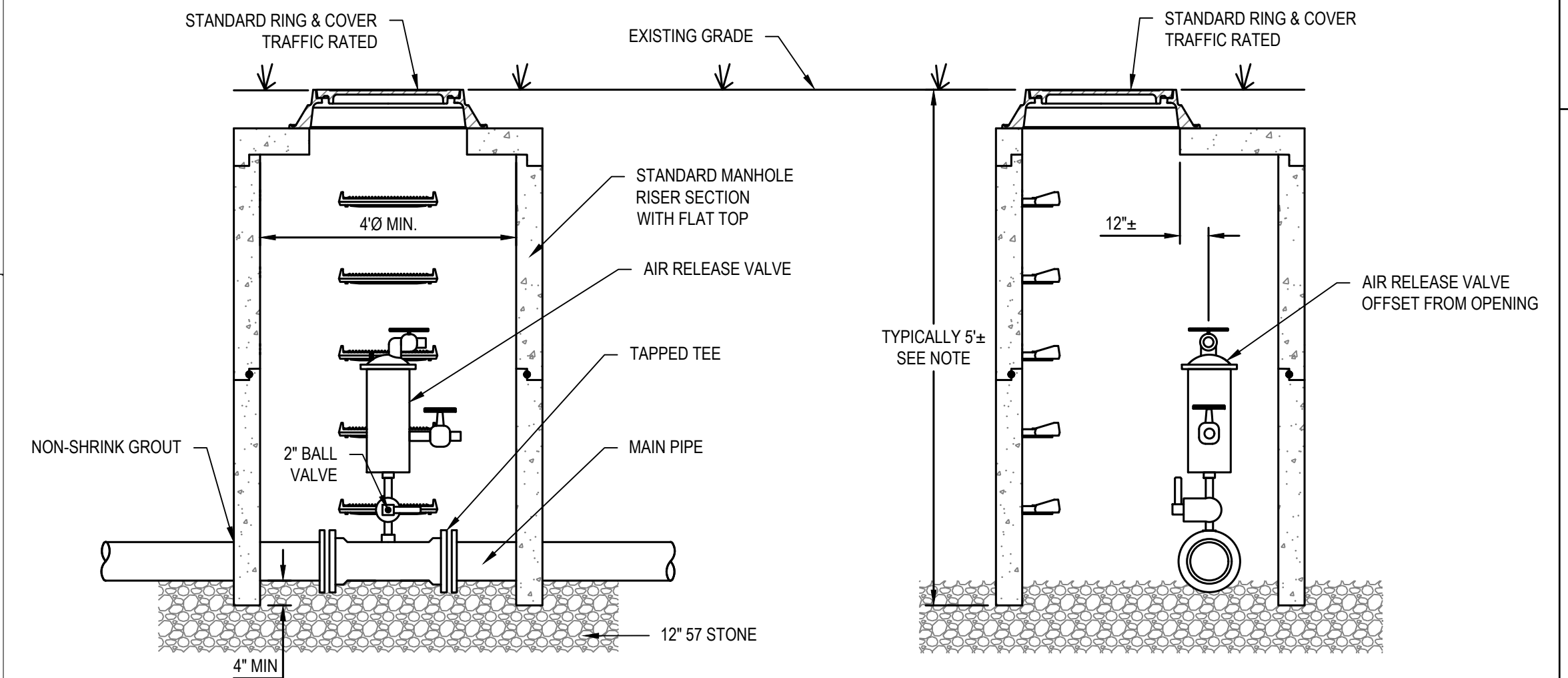
ROADWAY STANDARD DRAWING FOR
FIRE HYDRANT

SHEET 1 OF 1
1515.02

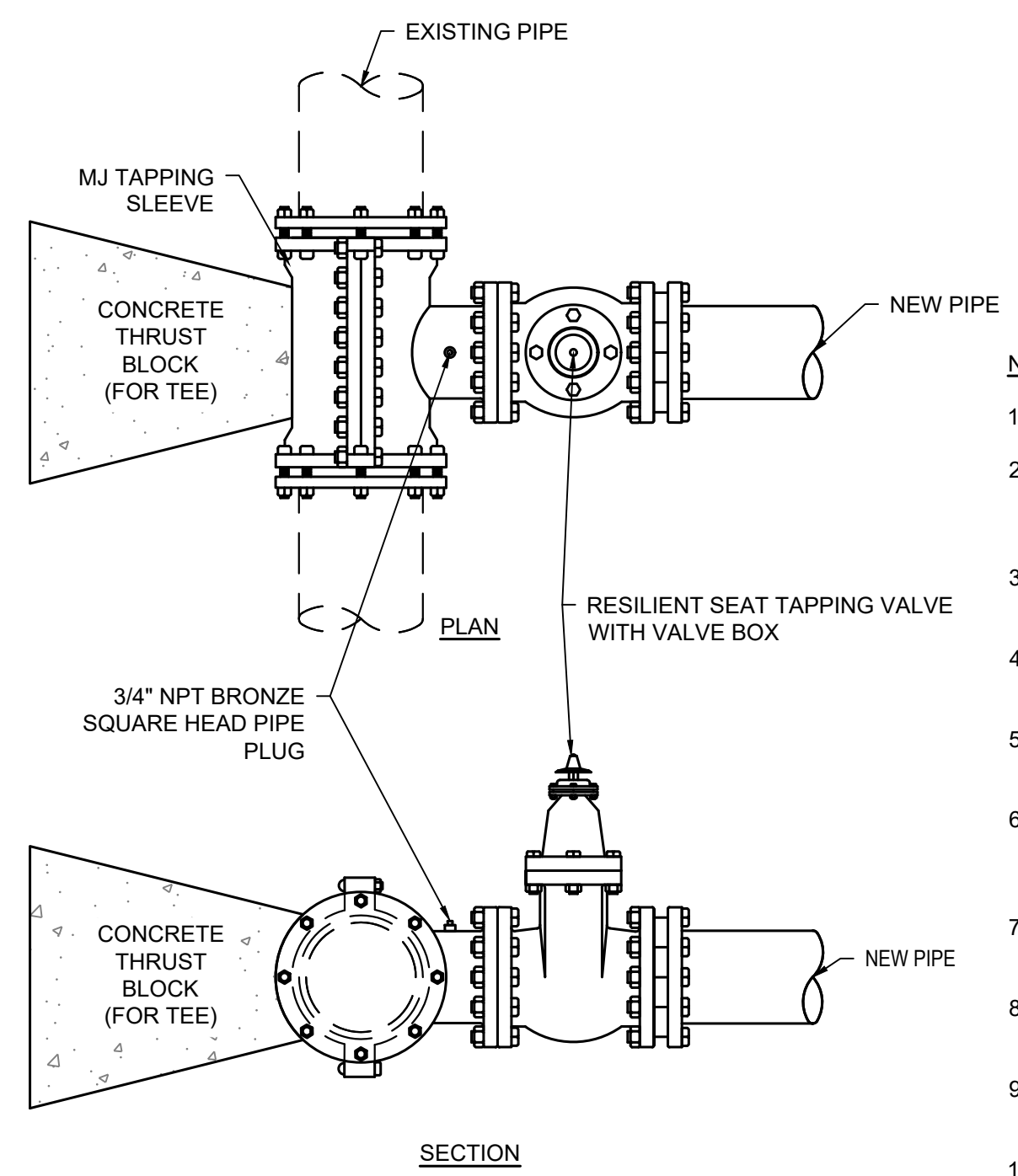
- NOTES:
- THIS DETAIL SHOWS THE TYPICAL FINAL FIRE HYDRANT CONFIGURATION AFTER INSTALLATION OF A PROPOSED FIRE HYDRANT, RECONNECTION OF AN EXISTING FIRE HYDRANT, OR RELOCATION OF A FIRE HYDRANT.
 - KEEP DRAIN PORTS FREE FROM OBSTRUCTION.
 - RESTRAIN ALL PIPE JOINTS AND FITTINGS. ACCEPTABLE TYPES OF RESTRAINT INCLUDE RESTRAINING GLANDS; RESTRAINED, PUSH-ON JOINTS; AND 3/4" BITUMINOUS COATED, ALL-THREAD RESTRAINING RODS. THRUST BLOCKS ARE NOT AN ACCEPTABLE TYPE OF RESTRAINT.
 - FOR RELOCATED OR RECONNECTED FIRE HYDRANTS, VERIFY THE VALVE IS RESTRAINED TO THE MAIN. PROVIDE APPROPRIATE RESTRAINT.
 - HYDRANT LOCATION APPLIES TO PROPOSED AND RELOCATED FIRE HYDRANTS.
 - LOCATE FIRE HYDRANT WITH 3' HORIZONTAL CLEARANCE FROM ABOVE GROUND OBJECTS.
 - PROVIDE A MINIMUM OF 3' COVER OVER ALL SECTIONS OF HORIZONTAL PIPE. USE FITTINGS AS NECESSARY.
 - TAPPING SLEEVES MAY BE USED ON EXISTING MAINS IN LIEU OF DI TEES.
 - LOCATE FIRE HYDRANT OUTSIDE OF THE VEHICLE RECOVERY AREA, ADJACENT TO THE R/W LINE, OR IN A PROTECTED AREA.



VALVE & VALVE BOX
NOT TO SCALE

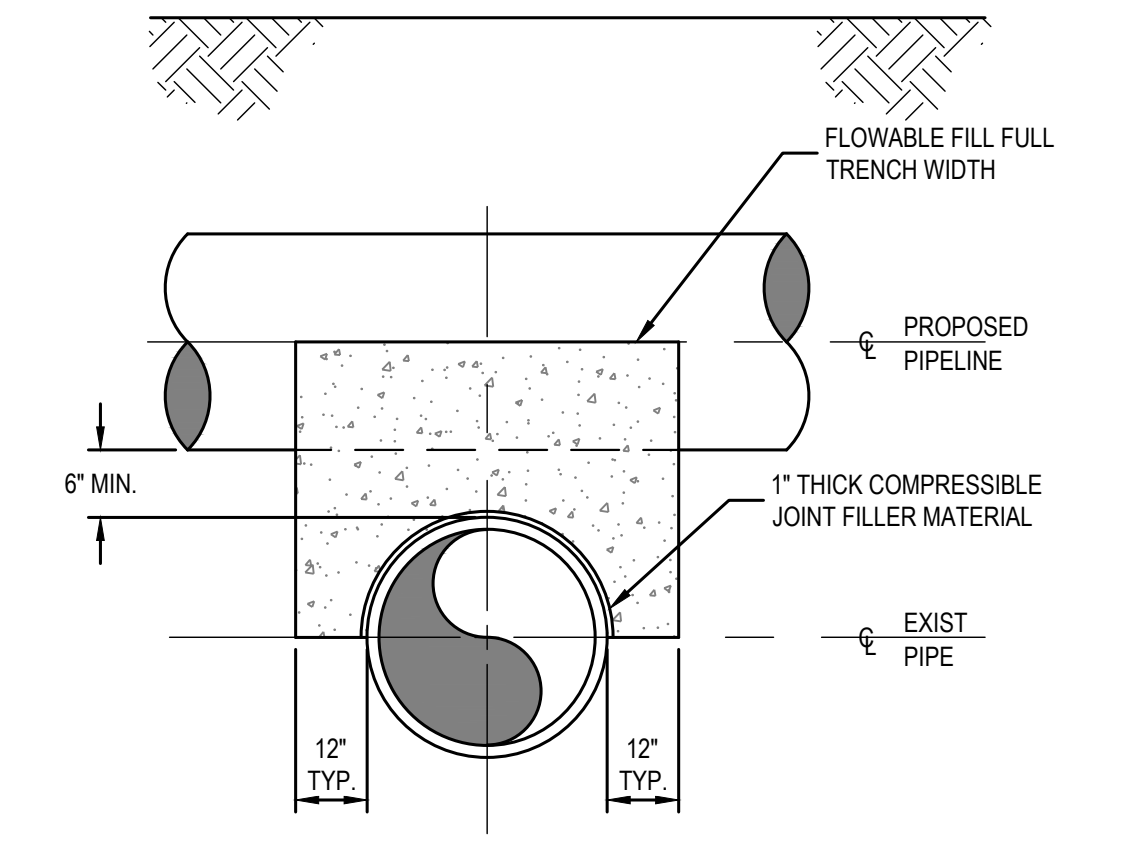


AIR RELEASE VALVE
NOT TO SCALE

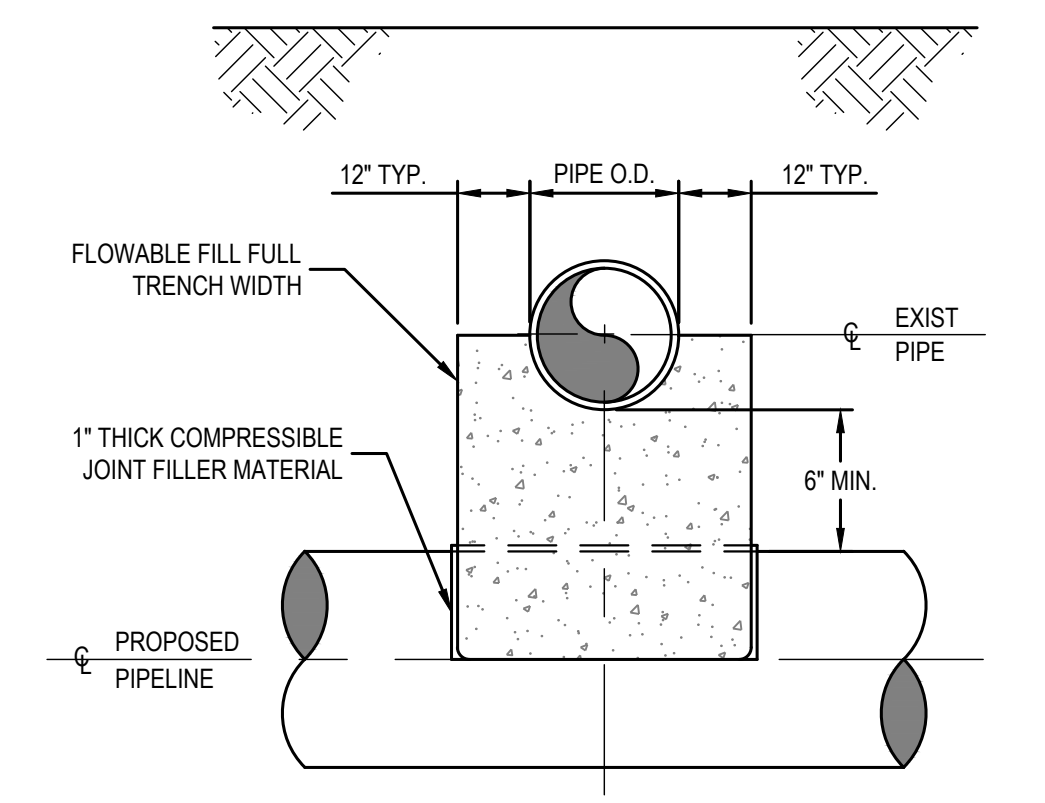


TAPPING SLEEVE AND VALVE
NOT TO SCALE

- NOTES:
- SLEEVE BODY SHALL BE DUCTILE IRON ASTM A536.
 - THE MATING FLANGE TO THE TAPPING SLEEVE MUST HAVE A RAISED MALE FACE TO PROVIDE FOR PROPER ALIGNMENT OF THE VALVE & TAPPING SLEEVE.
 - THE SLEEVE SHALL INCLUDE A FULL CIRCUMFERENTIAL GASKET PROVIDING A 360° SEAL AROUND EXISTING PIPE.
 - ALL VALVES SHALL HAVE 2" SQUARE OPERATING NUT & SHALL OPEN COUNTERCLOCKWISE.
 - VALVE BODY, BONNET, & GATE SHALL BE IN ACCORDANCE WITH AWWA C515 AND NSF 61.
 - VALVE BODY & BONNET SHALL BE COATED ON ALL INTERIOR & EXTERIOR SURFACES WITH A FUSION BONDED EPOXY IN ACCORDANCE WITH AWWA C550.
 - ALL VALVES 24" & SMALLER SHALL HAVE A SAFE WORKING PRESSURE OF 250 PSI.
 - PIPE SURFACES SHALL BE CLEANED THOROUGHLY TO PERMIT FOR A GOOD SEAL PRIOR TO INSTALLATION.
 - EXTERIOR OF TAPPING SLEEVE SHALL BE COATED WITH 2 COATS OF ASPHALTIC VARNISH MIL-C450.
 - EDGE OF SLEEVE SHALL BE LOCATED A MINIMUM OF 5' FROM THE NEAREST JOINT.



PROPOSED PIPELINE OVER EXISTING PIPE



PROPOSED PIPELINE UNDER EXISTING PIPE

PIPE CROSSING DETAIL
NOT TO SCALE

REVISIONS

K:\17-0070\170078-town of broadway sewer improve\CAD\civil drawings\R-3830_ut_dtl_UC03b_psh.dwg - Thursday, May 12, 2022 11:52:27 AM - PETERSON, PATRICK