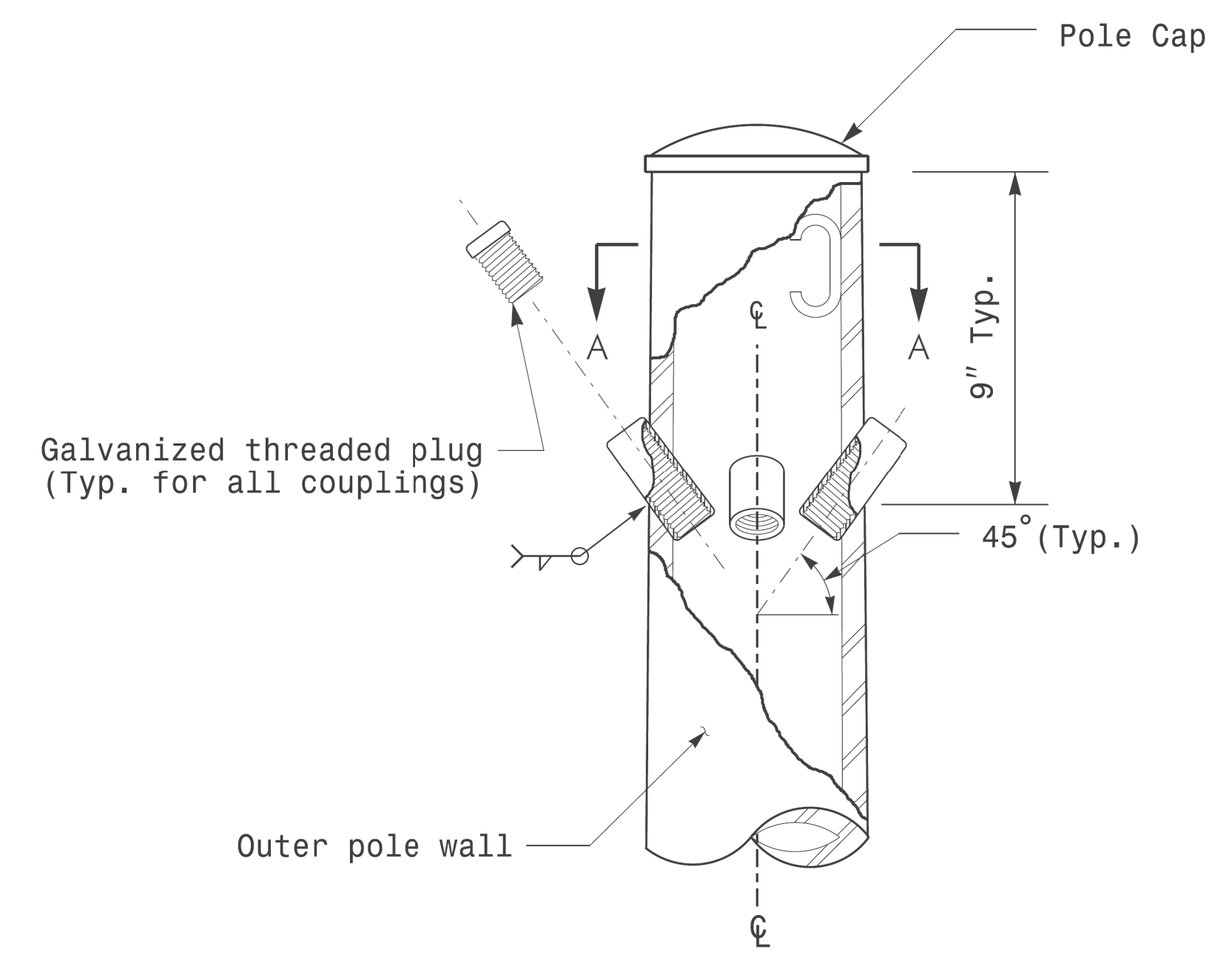
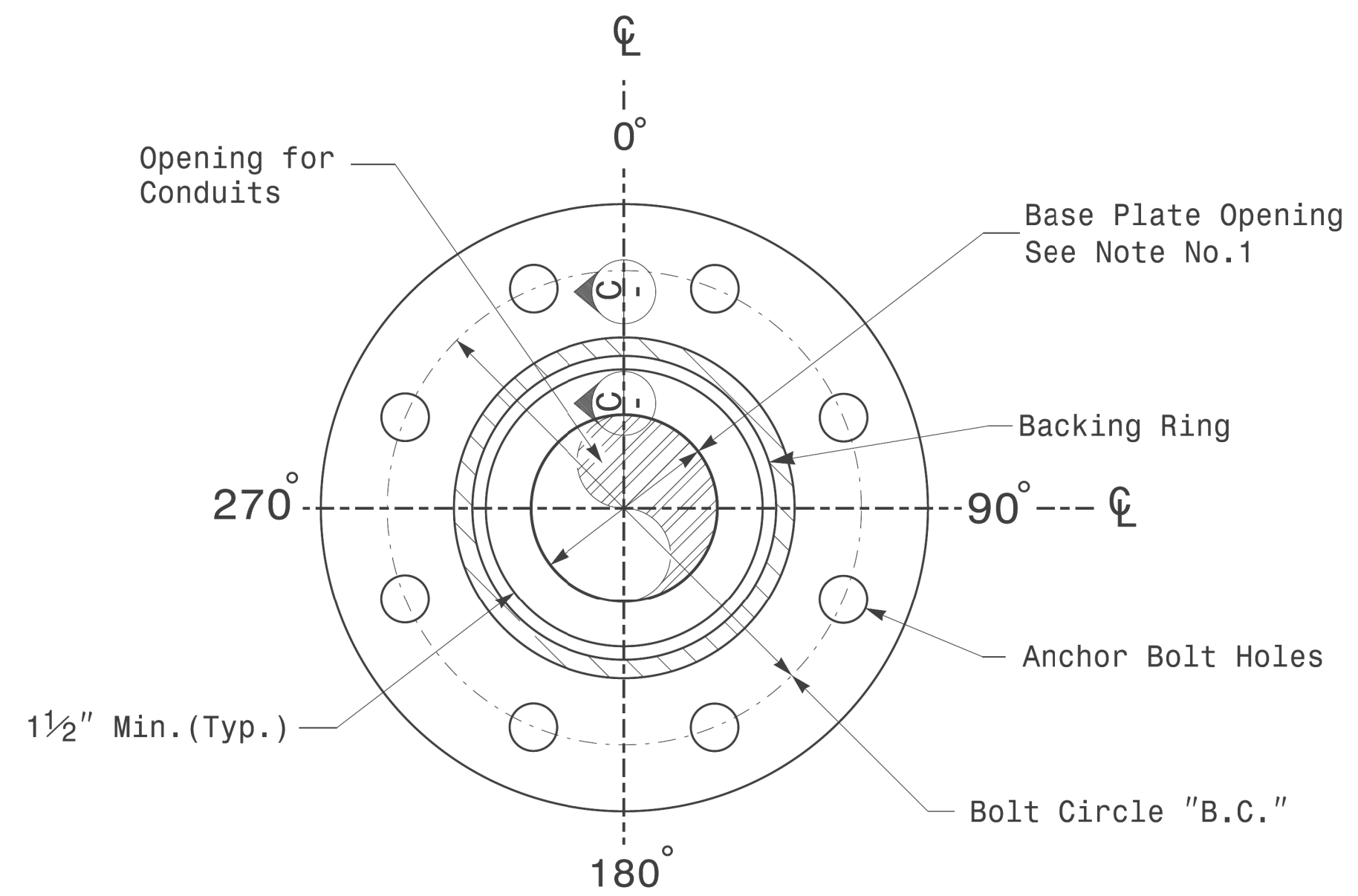


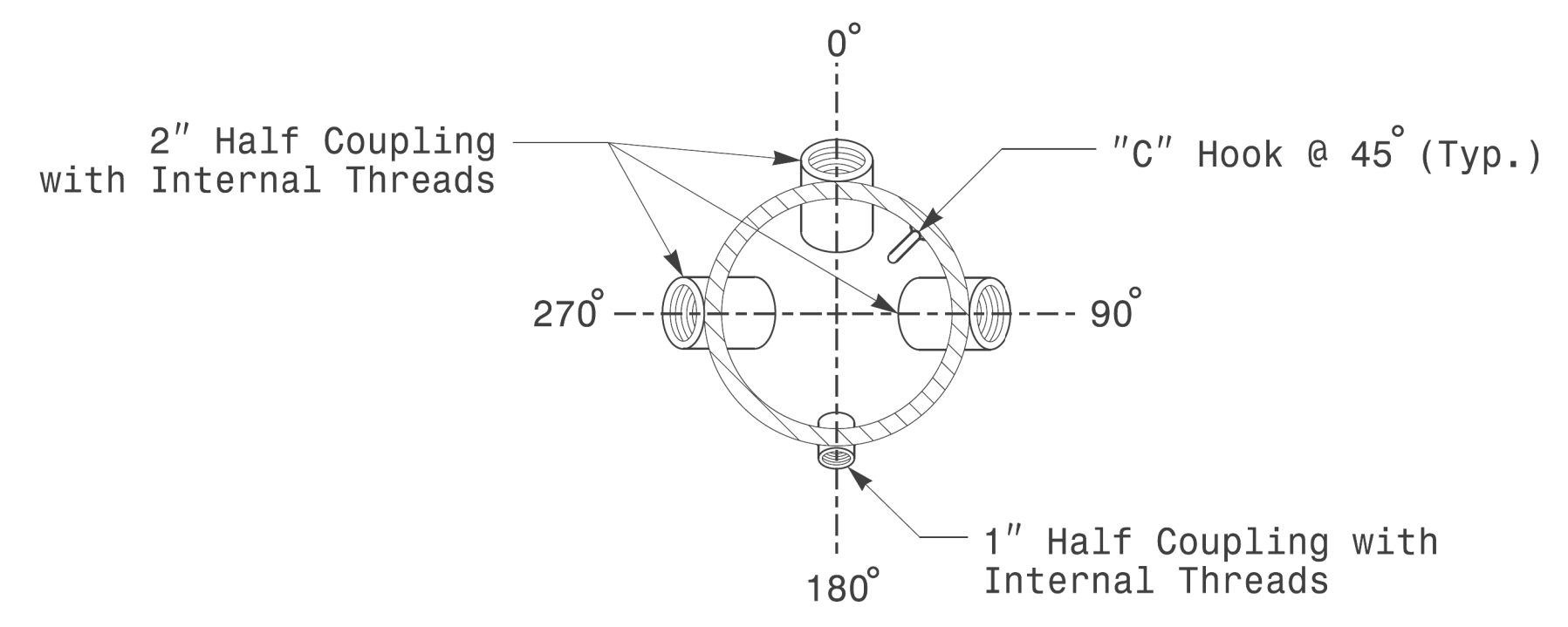
Note:  
 1. Opening in pole base plate shall be equal to pole base inside diameter minus 3 1/2" but shall not be less than 8 1/2".



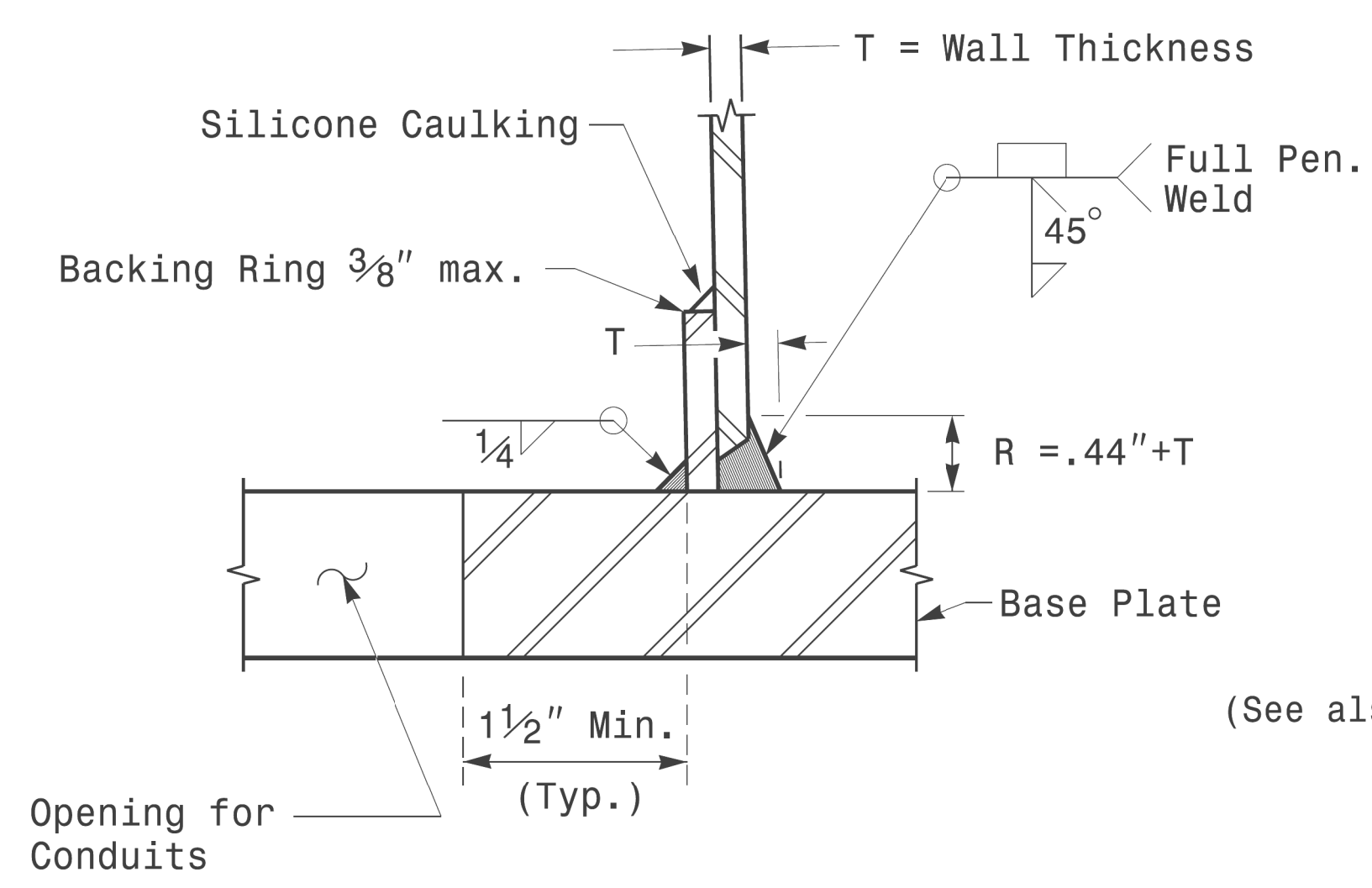
Cable Entrances at Top of Pole



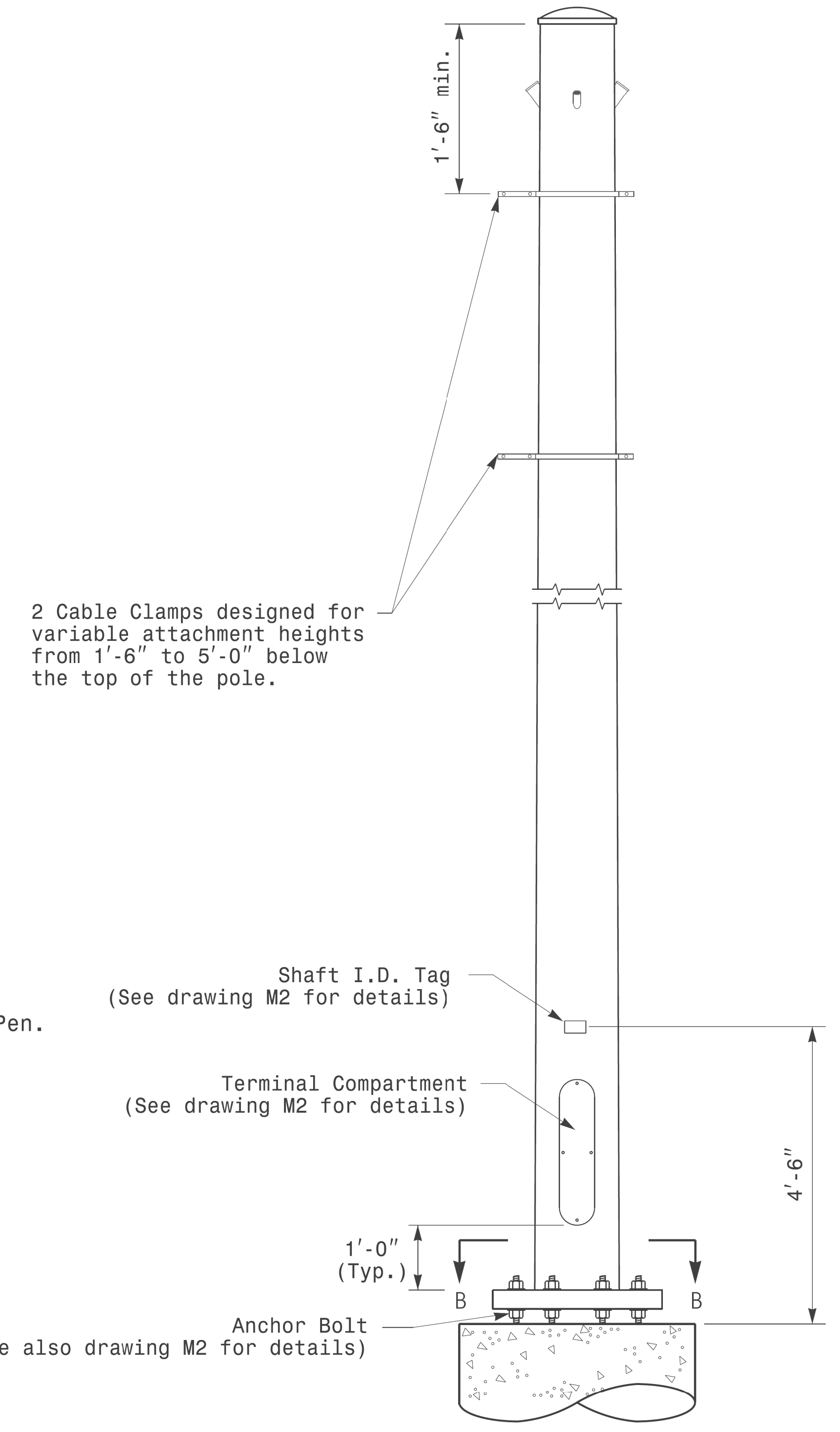
Section B-B  
Pole Base Plate Details  
(8 and 12 Bolt Pattern)



Section A-A  
Radial Orientation for Factory Installed  
Accessories at Top of Pole



Section C-C  
(Pole Attachment to Base Plate)  
Full-Penetration  
Groove Weld Detail



Monotube Strain Pole

11-OCT-2017 08:25  
 S:\13535\13535\Sig.M3 Design Section\Eastern Region\Sheet\2016\2014 Sig.M3 Std. Fabrication Details-Strain Poles.dgn  
 User: d...

Prepared In the Offices of:  750 N. Greenfield Pkwy, Garner, NC 27529	Typical Fabrication Details For Strain Poles		SEAL  D.C. SARKAR ENGINEER
	PLAN DATE: OCTOBER 2017 PREPARED BY: N. BITTING	DESIGNED BY: K.C. DURIGON REVIEWED BY: D.C. SARKAR	
REVISIONS		INIT. DATE	SEAL DocuSigned by: Debesu C. Sarkar 44E8E78B6A4A7URE DATE: 10/11/2017

**Fabrication Details – Strain Poles**