
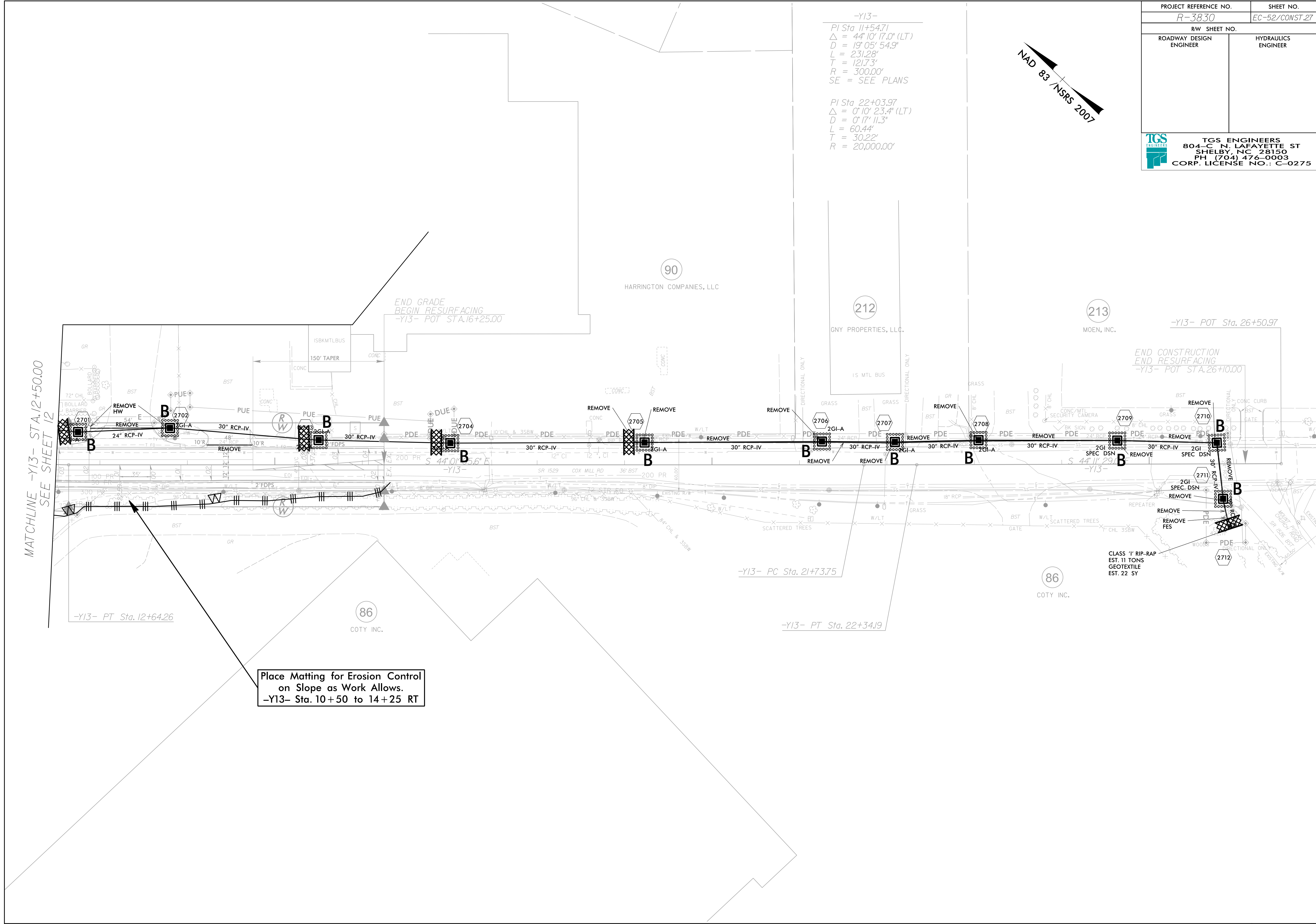
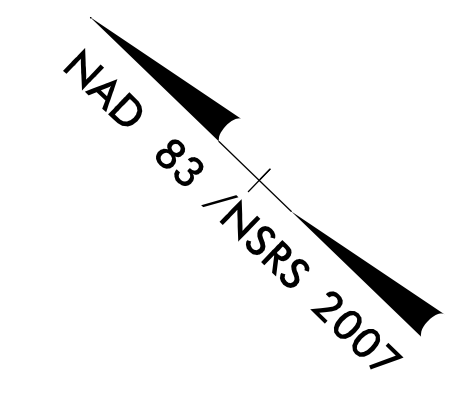


PROJECT REFERENCE NO. R-3830	SHEET NO. EC-52/CONST.27
RW SHEET NO.	
ROADWAY DESIGN ENGINEER	HYDRAULICS ENGINEER
 <b>TGS ENGINEERS</b> 804-C N. LAFAYETTE ST SHELBY, NC 28150 PH (704) 476-0003 CORP. LICENSE NO.: C-0275	

-Y13-  
 PI Sta 11+54.71  
 $\Delta = 44^{\circ}10'17.0"$  (LT)  
 $D = 19^{\circ}05'54.9"$   
 $L = 231.28'$   
 $T = 121.73'$   
 $R = 300.00'$   
 SE = SEE PLANS

PI Sta 22+03.97  
 $\Delta = 0^{\circ}10'23.4"$  (LT)  
 $D = 0^{\circ}17'11.3"$   
 $L = 60.44'$   
 $T = 30.22'$   
 $R = 20,000.00'$



Place Matting for Erosion Control  
 on Slope as Work Allows.  
 -Y13- Sta. 10+50 to 14+25 RT