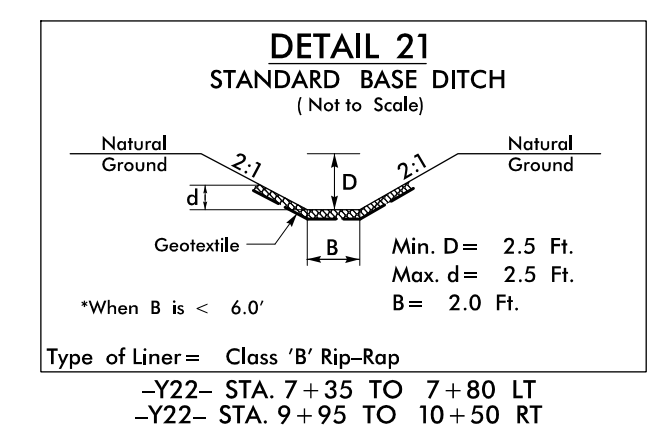


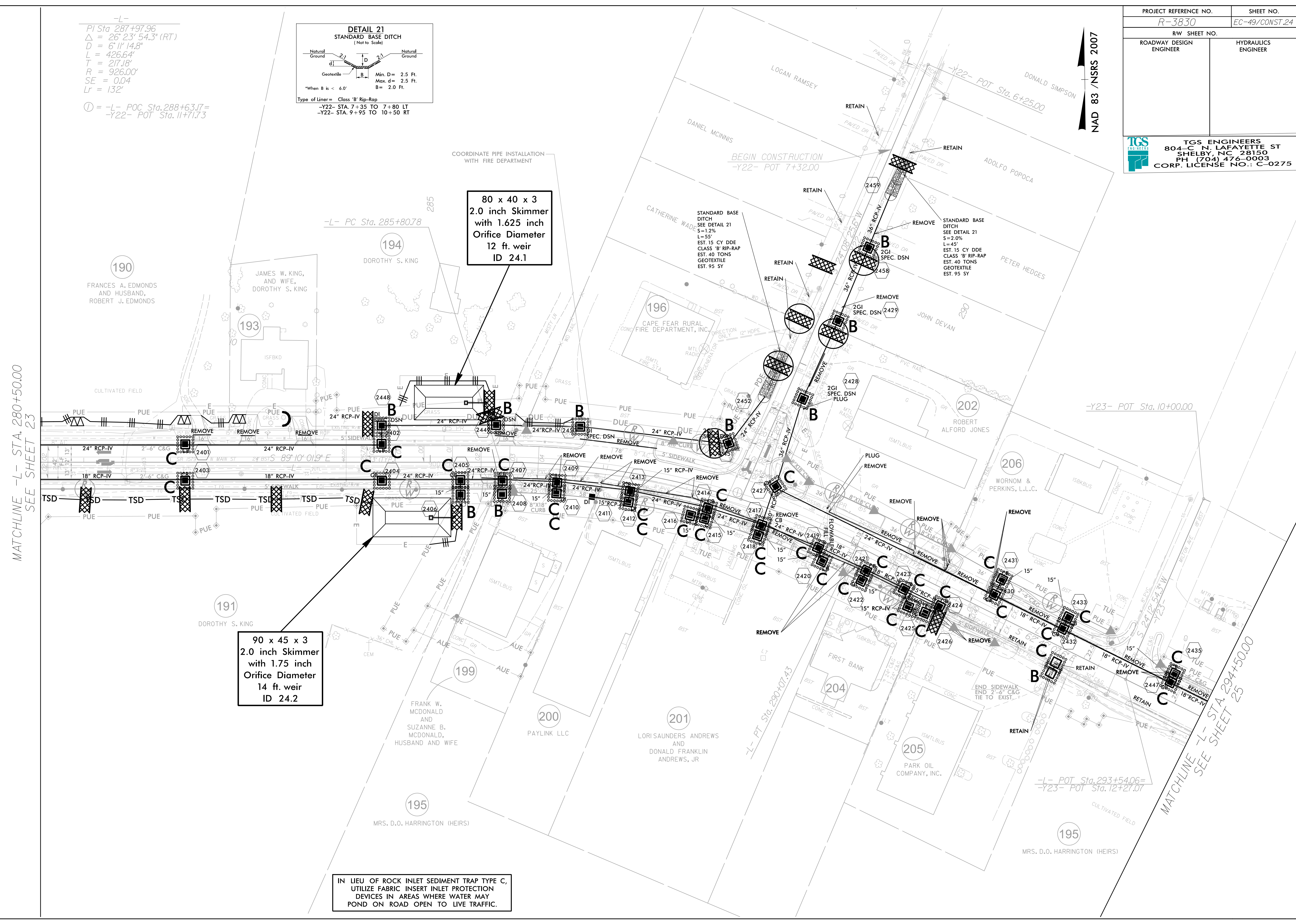
-L-
 PI Sta. 287+97.96
 $\Delta = 26^{\circ} 23' 54.3" (RT)$
 $D = 6' 11" 14.8"$
 $L = 426.64'$
 $T = 217.18'$
 $R = 926.00'$
 $SE = 0.04$
 $LR = 132'$
 ① = -L- POC Sta. 288+63.17=
 -Y22- POT Sta. 11+71.73



NAD 83 / NSRS 2007

MATCHLINE -L- STA. 280+50.00
SEE SHEET 23

MATCHLINE -L- STA. 294+50.00
SEE SHEET 25



IN LIEU OF ROCK INLET SEDIMENT TRAP TYPE C, UTILIZE FABRIC INSERT INLET PROTECTION DEVICES IN AREAS WHERE WATER MAY POND ON ROAD OPEN TO LIVE TRAFFIC.