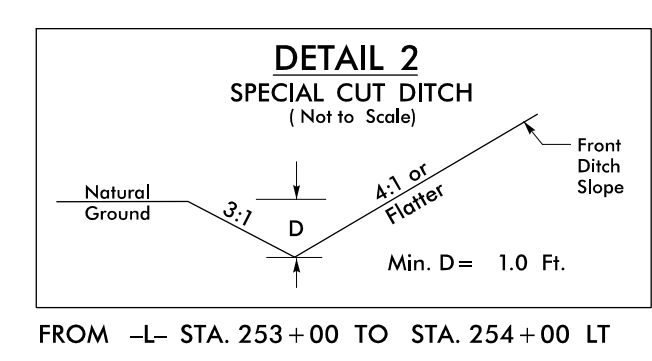
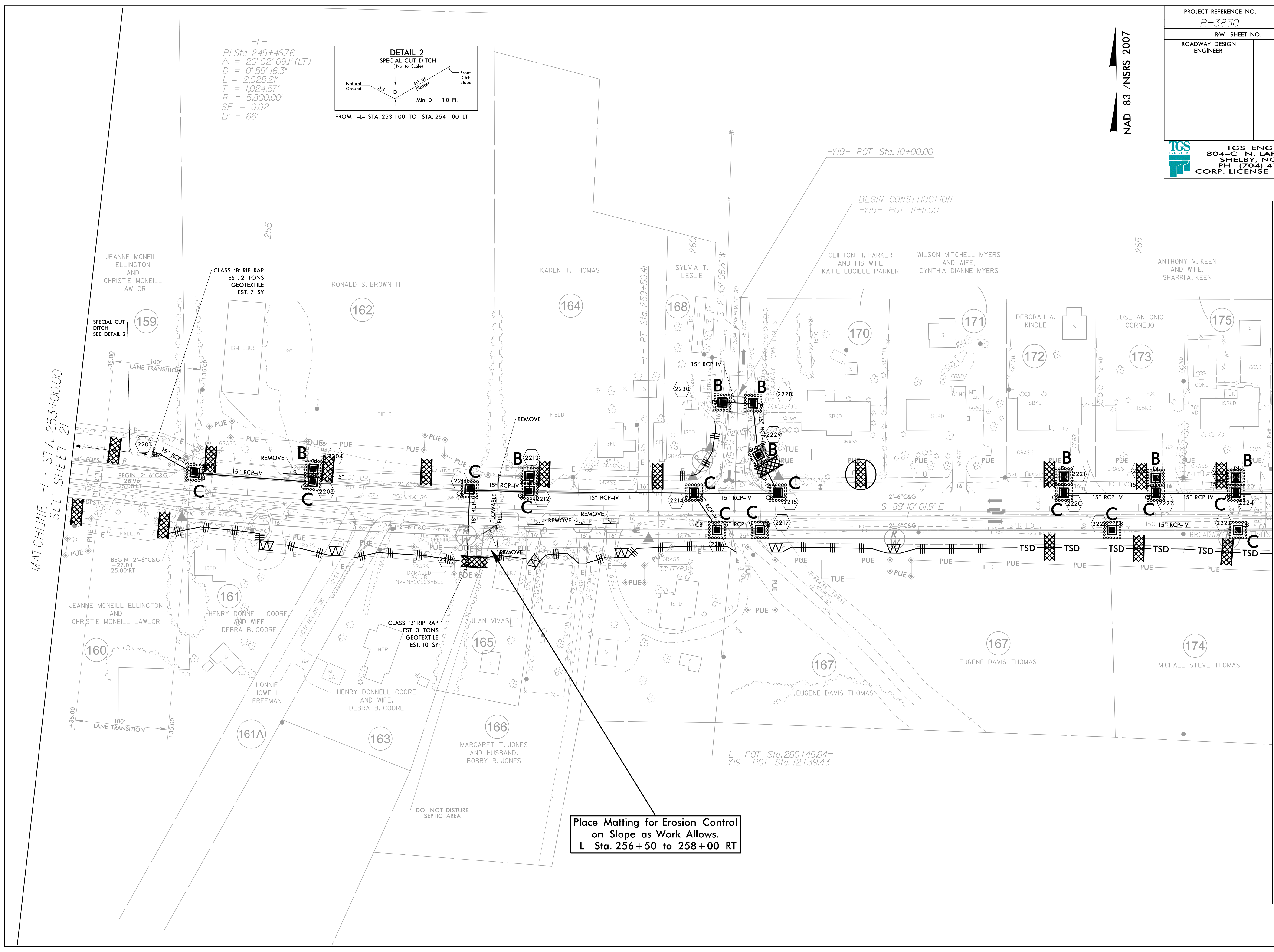


NAD 83 / NSRS 2007

-L-  
 PI Sta. 249+46.76  
 $\Delta = 20^{\circ} 02' 09.1''$  (LT)  
 $D = 0' 59' 16.3''$   
 $L = 2,028.21'$   
 $T = 1,024.57'$   
 $R = 5,800.00'$   
 $SE = 0.02$   
 $Lr = 66'$



MATCHLINE -L- STA. 253+00.00  
SEE SHEET 21



MATCHLINE -L- STA. 266+50.00  
SEE SHEET 23

Place Matting for Erosion Control  
 on Slope as Work Allows.  
 -L- Sta. 256+50 to 258+00 RT