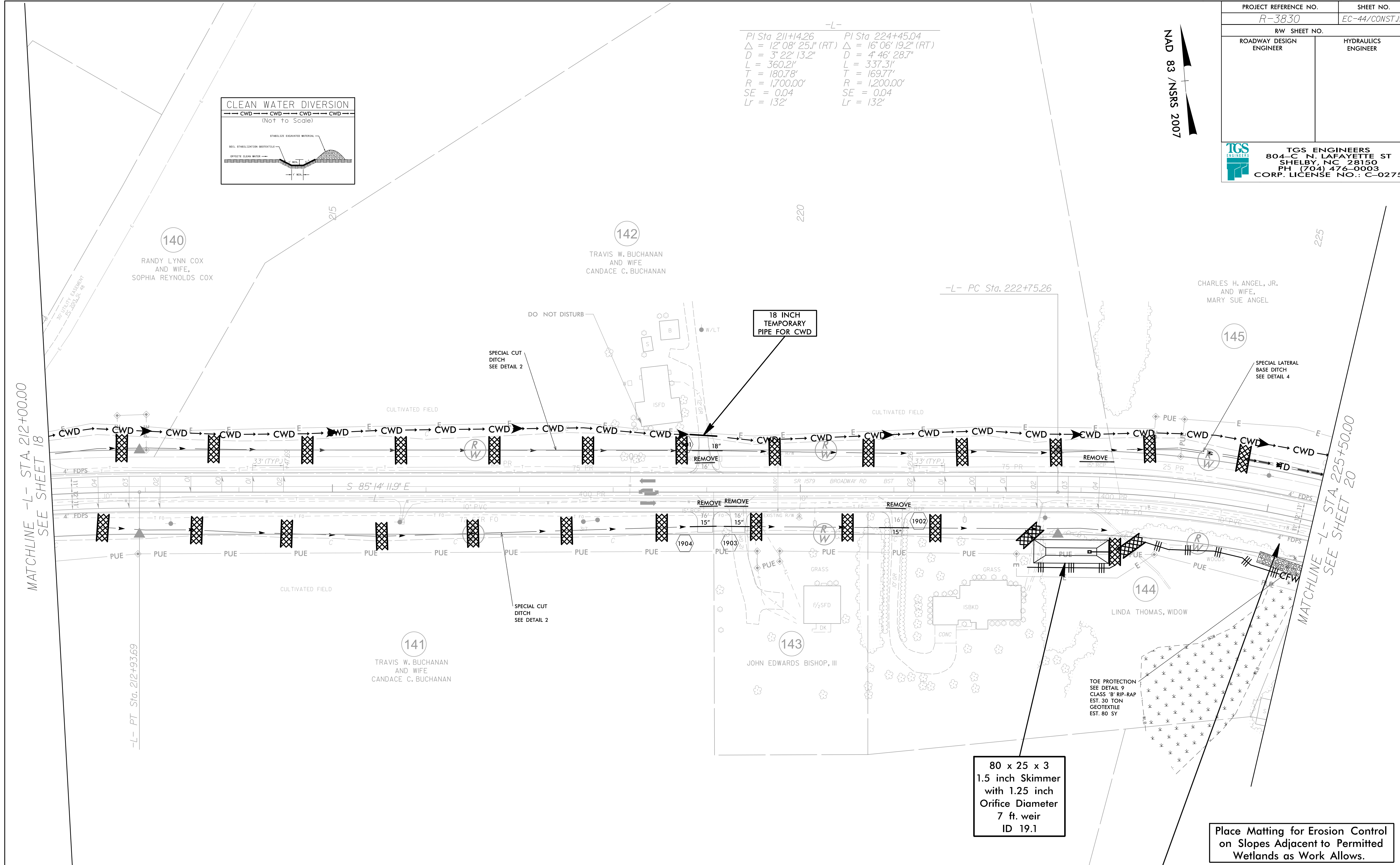
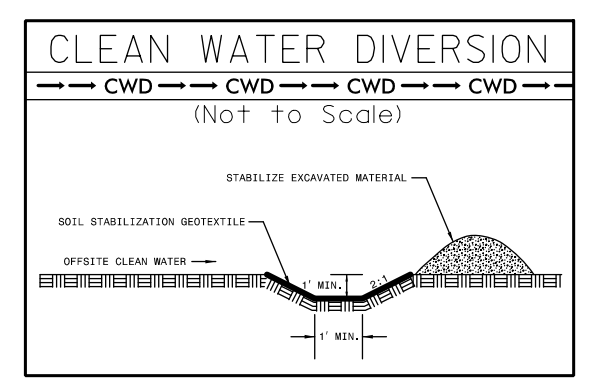


NAD 83 / NSRS 2007

-L-
 PI Sta 211+44.26 PI Sta 224+45.04
 $\Delta = 12' 08' 25.1''$ (RT) $\Delta = 16' 06' 19.2''$ (RT)
 $D = 3' 22' 13.2''$ $D = 4' 46' 28.7''$
 $L = 360.21'$ $L = 337.31'$
 $T = 180.78'$ $T = 169.77'$
 $R = 1,700.00'$ $R = 1,200.00'$
 $SE = 0.04$ $SE = 0.04$
 $Lr = 132'$ $Lr = 132'$



MATCHLINE -L- STA. 212+00.00
SEE SHEET 18

MATCHLINE -L- STA. 225+50.00
SEE SHEET 20

80 x 25 x 3
1.5 inch Skimmer
with 1.25 inch
Orifice Diameter
7 ft. weir
ID 19.1

Place Matting for Erosion Control
on Slopes Adjacent to Permitted
Wetlands as Work Allows.

Place Matting for Erosion Control
on Slope as Work Allows.
-L- Sta. 225+00 to 226+00 RT

