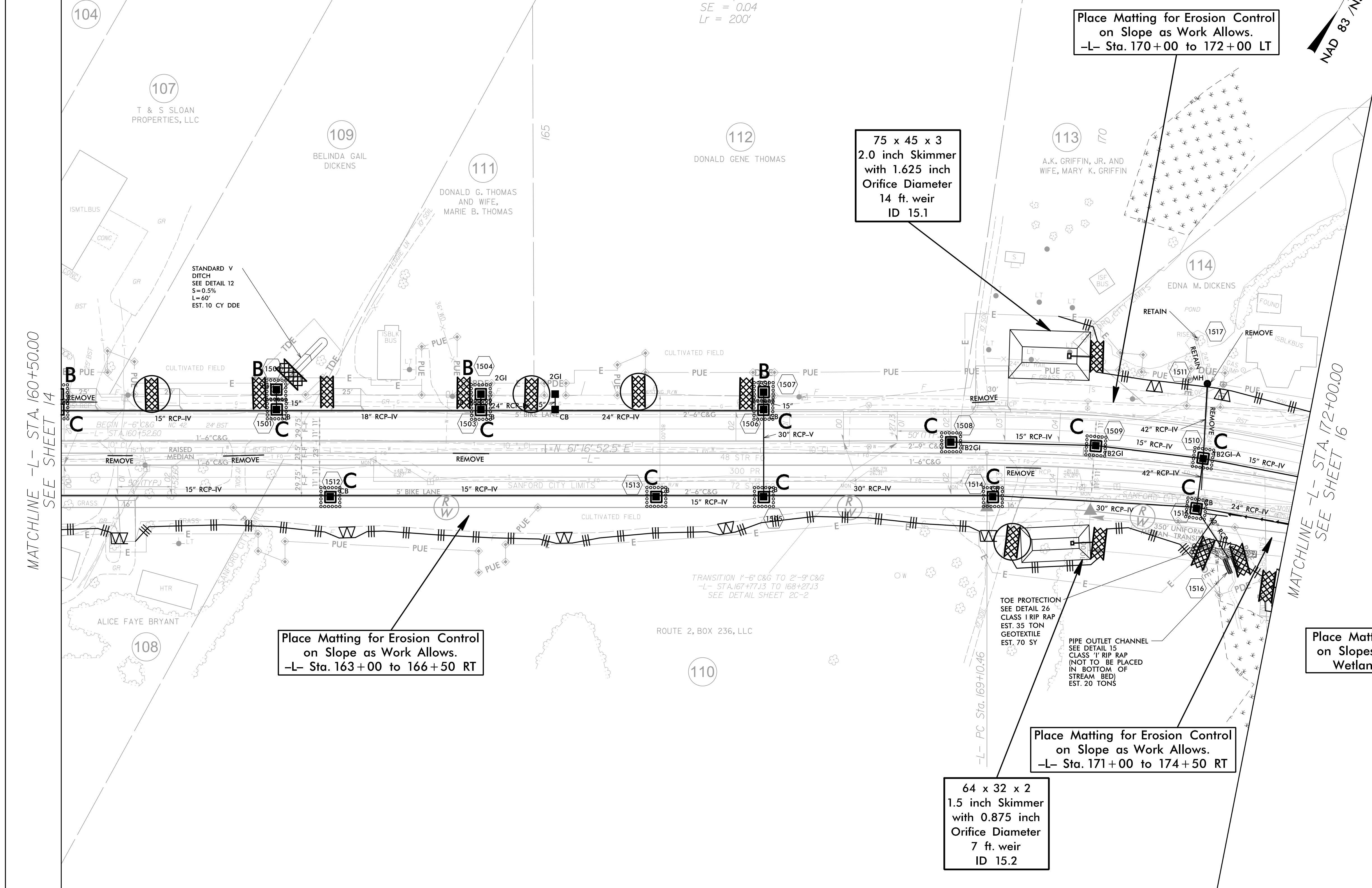
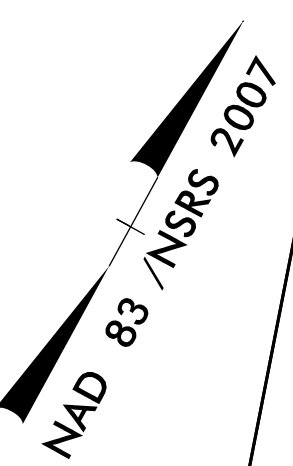


-L-
 PI Sta. 172+79.26
 $\Delta = 27^{\circ} 37' 35.0''$ (RT)
 $D = 3^{\circ} 49' 11.0''$
 $L = 723.26'$
 $T = 368.80'$
 $R = 1,500.00'$
 $SE = 0.04$
 $Lr = 200'$



Place Matting for Erosion Control
 on Slope as Work Allows.
 -L- Sta. 170+00 to 172+00 LT

75 x 45 x 3
 2.0 inch Skimmer
 with 1.625 inch
 Orifice Diameter
 14 ft. weir
 ID 15.1

Place Matting for Erosion Control
 on Slope as Work Allows.
 -L- Sta. 163+00 to 166+50 RT

Place Matting for Erosion Control
 on Slope as Work Allows.
 -L- Sta. 171+00 to 174+50 RT

Place Matting for Erosion Control
 on Slopes Adjacent to Permitted
 Wetlands as Work Allows.

64 x 32 x 2
 1.5 inch Skimmer
 with 0.875 inch
 Orifice Diameter
 7 ft. weir
 ID 15.2

