
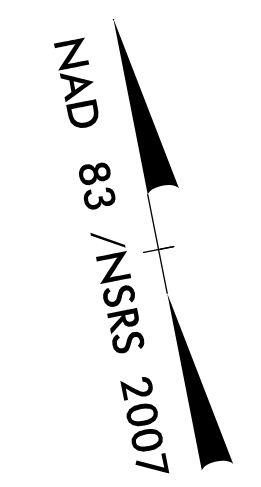
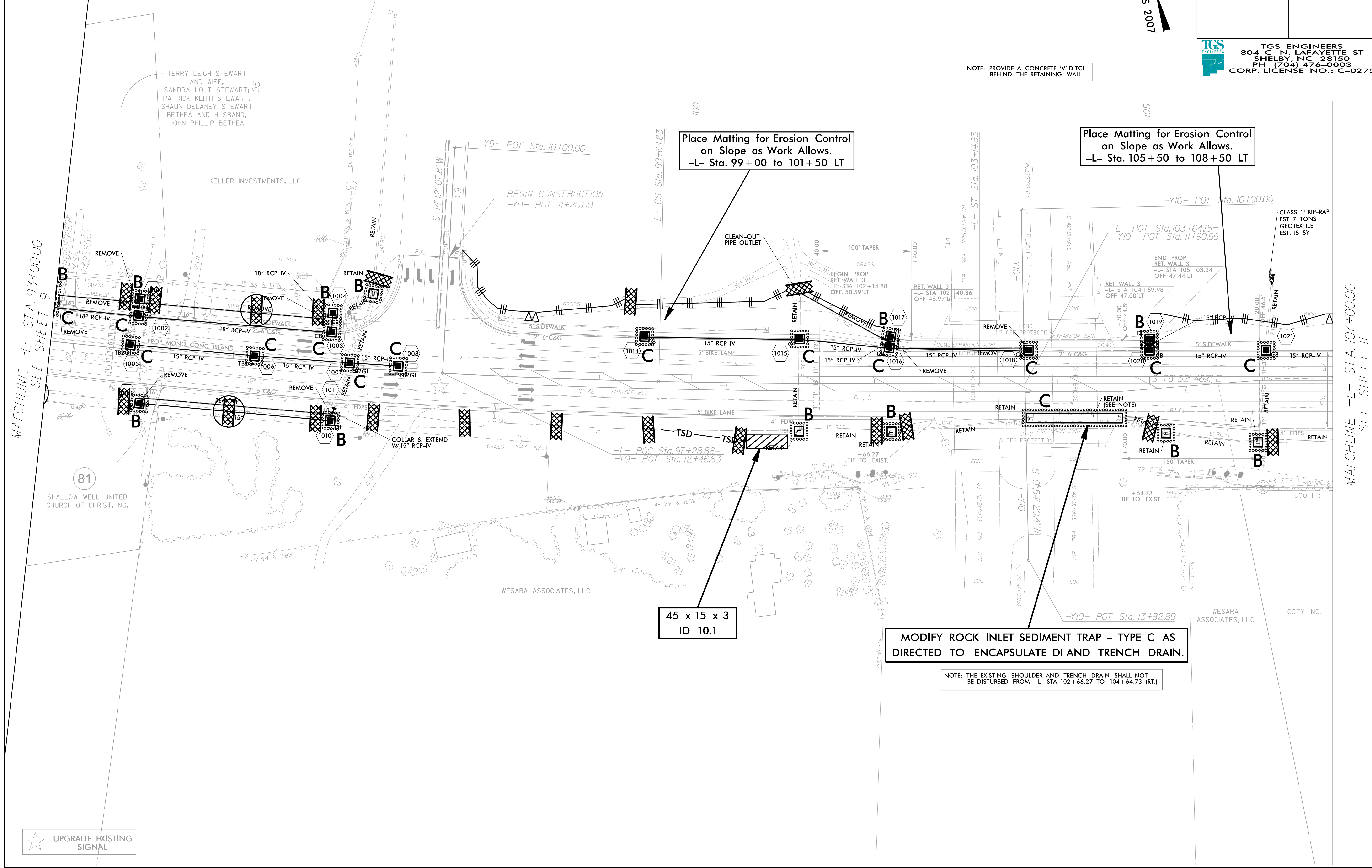


-L-
 PI Sta 92+54.12 Pls Sta 100+81.50
 $\Delta = 10' 4" 27.5" (LT)$ $\Theta_s = 1' 18" 44.7"$
 $D = 0' 44" 59.8"$ $L_s = 350.00'$
 $L = 1,425.57'$ $LT = 233.34'$
 $T = 714.86'$ $ST = 116.67'$
 $R = 7,640.00'$
 SE = SEE PLANS

PROJECT REFERENCE NO. R-3830	SHEET NO. EC-35/CONST.10
RW SHEET NO.	
ROADWAY DESIGN ENGINEER	HYDRAULICS ENGINEER
 TGS ENGINEERS 804-C N. LAFAYETTE ST SHELBY, NC 28150 PH: (704) 476-0009 CORP. LICENSE NO.: C-0275	



NOTE: PROVIDE A CONCRETE 'V' DITCH BEHIND THE RETAINING WALL



Place Matting for Erosion Control
 on Slope as Work Allows.
 -L- Sta. 99+00 to 101+50 LT

Place Matting for Erosion Control
 on Slope as Work Allows.
 -L- Sta. 105+50 to 108+50 LT

45 x 15 x 3
 ID 10.1

MODIFY ROCK INLET SEDIMENT TRAP - TYPE C AS DIRECTED TO ENCAPSULATE DI AND TRENCH DRAIN.

NOTE: THE EXISTING SHOULDER AND TRENCH DRAIN SHALL NOT BE DISTURBED FROM -L- STA. 102+66.27 TO 104+64.73 (RT.)

MATCHLINE -L- STA. 93+00.00
 SEE SHEET 9

MATCHLINE -L- STA. 107+00.00
 SEE SHEET 11

★ UPGRADE EXISTING SIGNAL

TERRY LEIGH STEWART AND WIFE,
 SANDRA HOLT STEWART,
 PATRICK KEITH STEWART,
 SHAUN DELANEY STEWART
 BETHEA AND HUSBAND,
 JOHN PHILLIP BETHEA

KELLER INVESTMENTS, LLC

81
 SHALLOW WELL UNITED CHURCH OF CHRIST, INC.

WESARA ASSOCIATES, LLC

WESARA ASSOCIATES, LLC

COTY INC.