
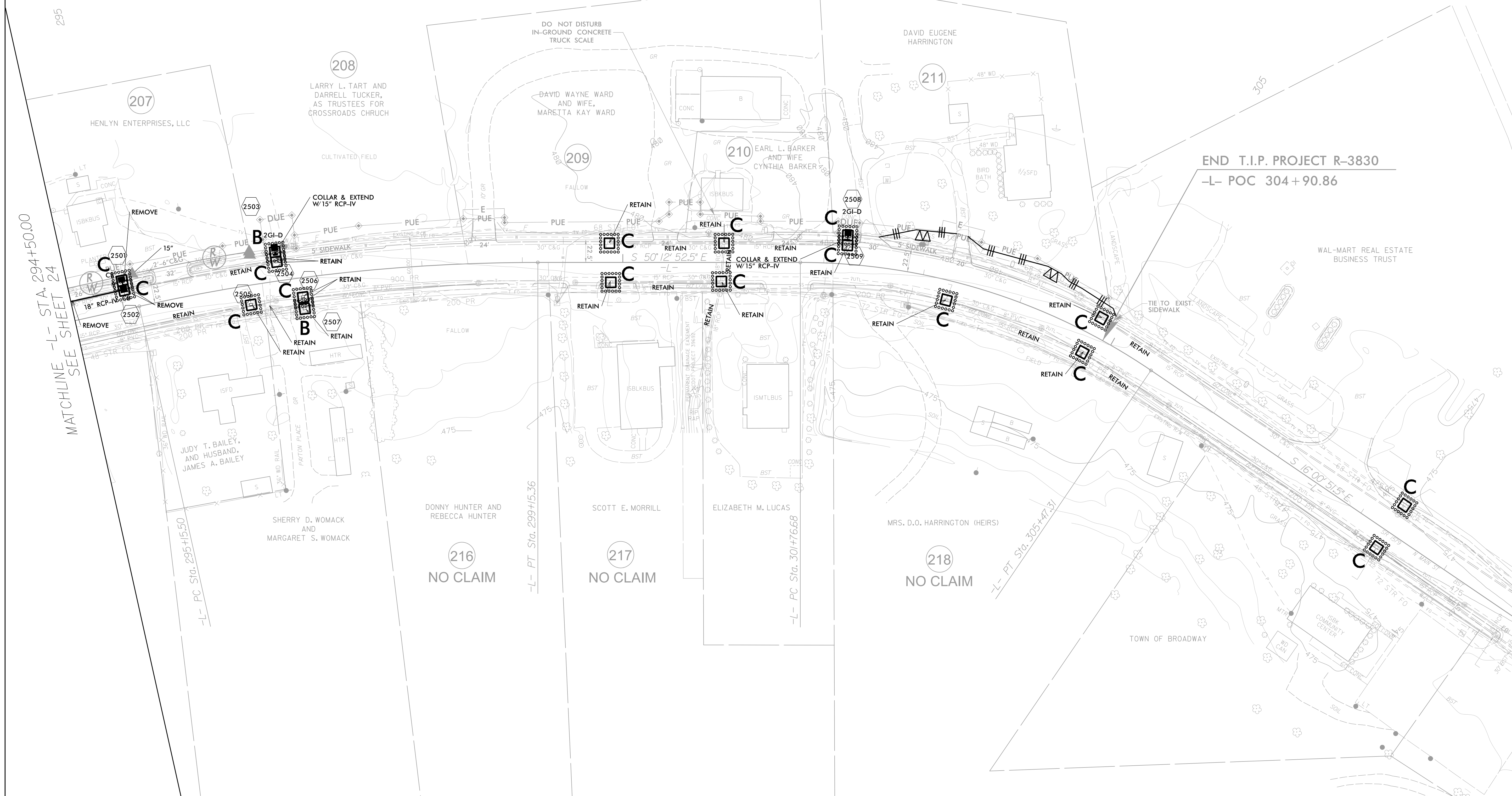


-L-  
 PI Sta 297+16.24    PI Sta 303+67.70  
 $\Delta = 12^{\circ} 33' 15.1''$  (RT)     $\Delta = 34^{\circ} 12' 01.0''$  (RT)  
 $D = 3^{\circ} 08' 22.7''$      $D = 9^{\circ} 13' 38.9''$   
 $L = 399.86'$      $L = 370.64'$   
 $T = 200.73'$      $T = 191.02'$   
 $R = 1,824.91'$      $R = 620.93'$

NAD 83 / NRS 2007

PROJECT REFERENCE NO. R-3830	SHEET NO. EC-26/CONST.25
RW SHEET NO.	
ROADWAY DESIGN ENGINEER	HYDRAULICS ENGINEER
 <b>TGS ENGINEERS</b> 804-C N. LAFAYETTE ST SHELBY, NC 28150 PH (704) 476-0003 CORP. LICENSE NO.: C-0275	



MATCHLINE -L- STA. 294+50.00  
SEE SHEET 24

END T.I.P. PROJECT R-3830  
-L- POC 304+90.86

-L- PC Sta. 295+15.50

-L- PT Sta. 299+15.36

-L- PC Sta. 301+76.68

-L- PT Sta. 305+47.31

IN LIEU OF ROCK INLET SEDIMENT TRAP TYPE C, UTILIZE FABRIC INSERT INLET PROTECTION DEVICES IN AREAS WHERE WATER MAY POND ON ROAD OPEN TO LIVE TRAFFIC.

CLEARING AND GRUBBING EROSION CONTROL FOR CONSTRUCTION SHEET 25

NOTE: PLACE TEMPORARY ROCK SEDIMENT DAMS TYPE - B AND TEMPORARY ROCK SILT CHECKS TYPE - A AT DRAINAGE OUTLETS.