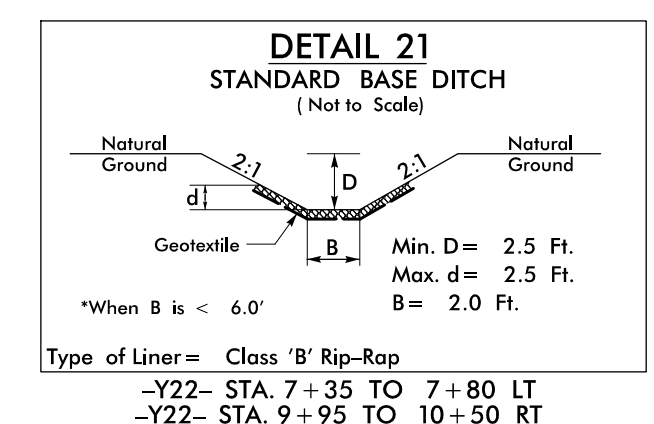


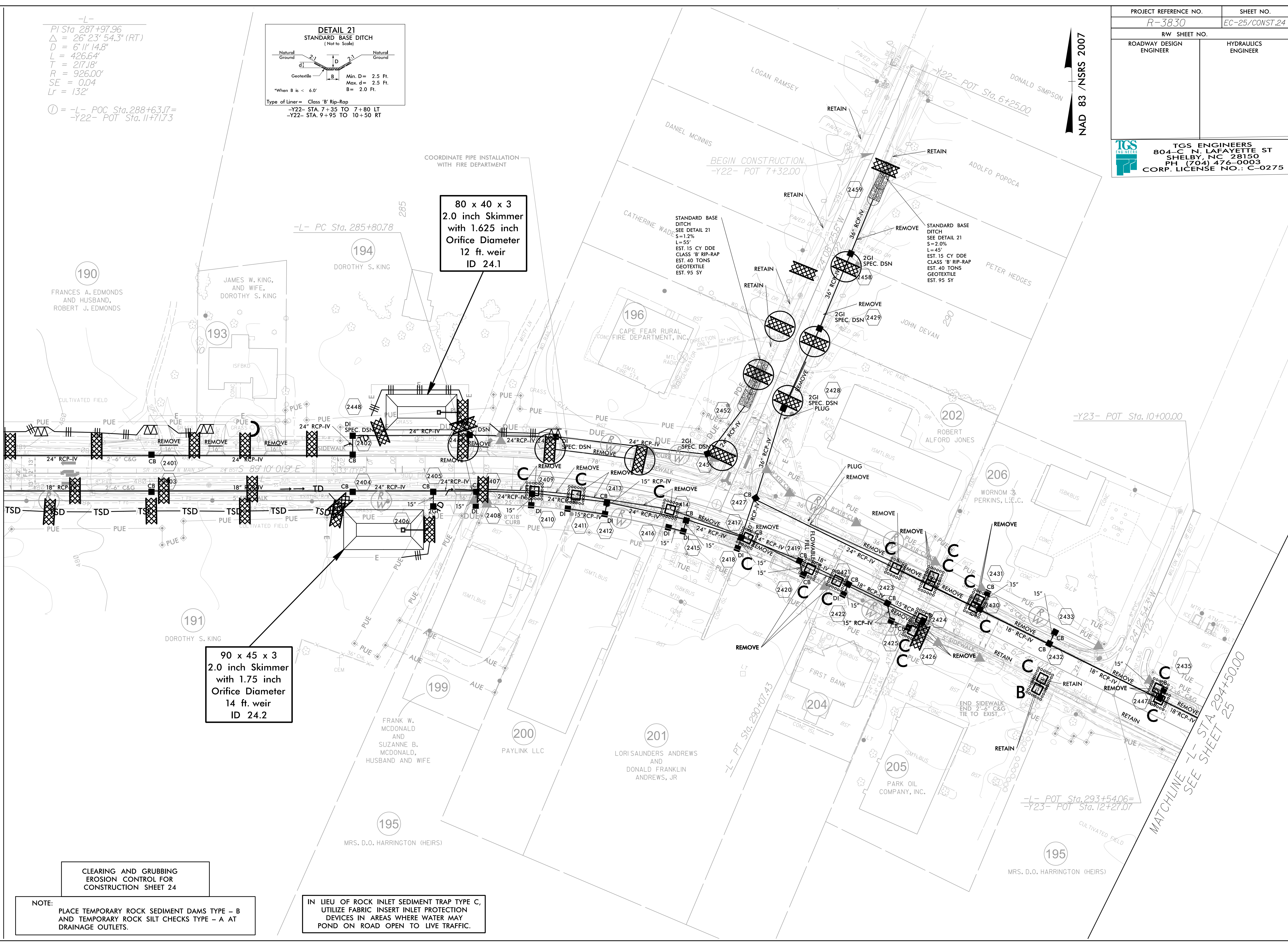
-L-  
 PI Sta. 287+97.96  
 $\Delta = 26^{\circ} 23' 54.3" (RT)$   
 $D = 6' 11" 14.8"$   
 $L = 426.64'$   
 $T = 217.18'$   
 $R = 926.00'$   
 $SE = 0.04$   
 $LR = 132'$   
 ① = -L- POC Sta. 288+63.17 =  
 -Y22- POT Sta. 11+71.73



NAD 83 / NSRS 2007

MATCHLINE -L- STA. 280+50.00  
SEE SHEET 23

MATCHLINE -L- STA. 294+50.00  
SEE SHEET 25



80 x 40 x 3  
 2.0 inch Skimmer  
 with 1.625 inch  
 Orifice Diameter  
 12 ft. weir  
 ID 24.1

90 x 45 x 3  
 2.0 inch Skimmer  
 with 1.75 inch  
 Orifice Diameter  
 14 ft. weir  
 ID 24.2

CLEARING AND GRUBBING  
 EROSION CONTROL FOR  
 CONSTRUCTION SHEET 24

NOTE:  
 PLACE TEMPORARY ROCK SEDIMENT DAMS TYPE - B  
 AND TEMPORARY ROCK SILT CHECKS TYPE - A AT  
 DRAINAGE OUTLETS.

IN LIEU OF ROCK INLET SEDIMENT TRAP TYPE C,  
 UTILIZE FABRIC INSERT INLET PROTECTION  
 DEVICES IN AREAS WHERE WATER MAY  
 POND ON ROAD OPEN TO LIVE TRAFFIC.