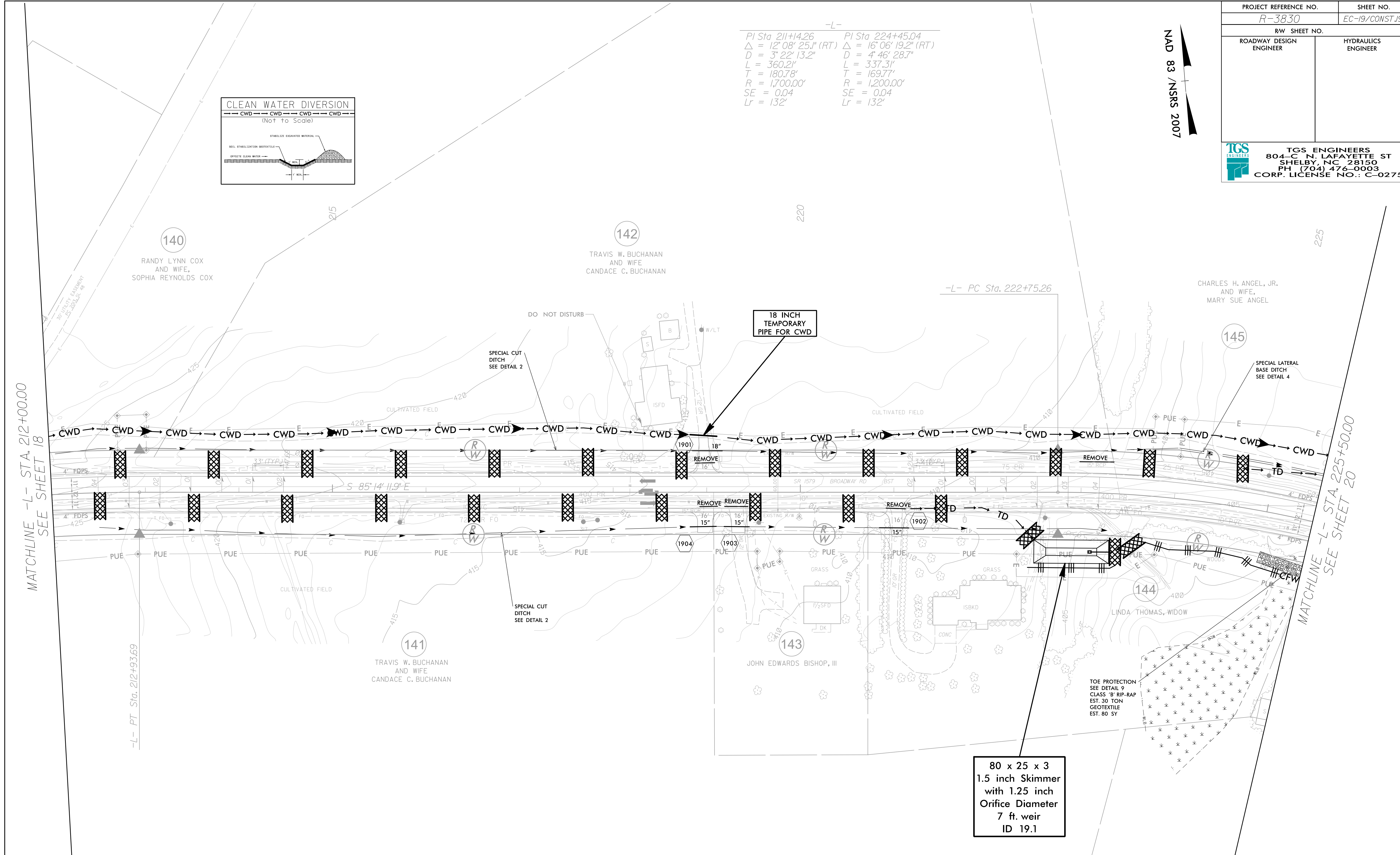
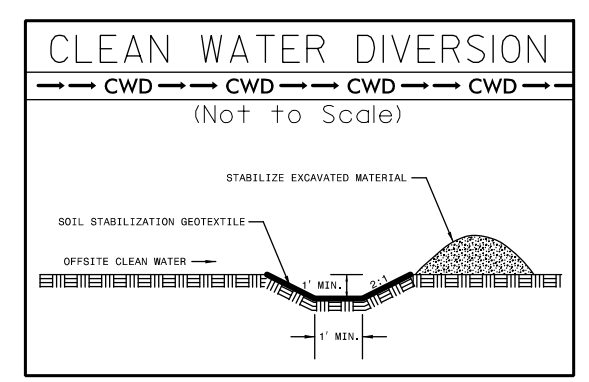


NAD 83 / NSRS 2007

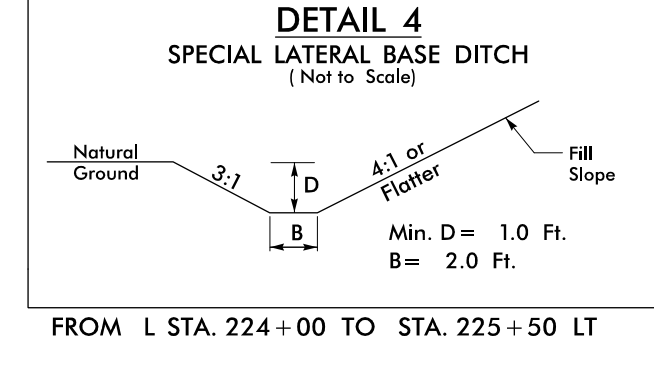
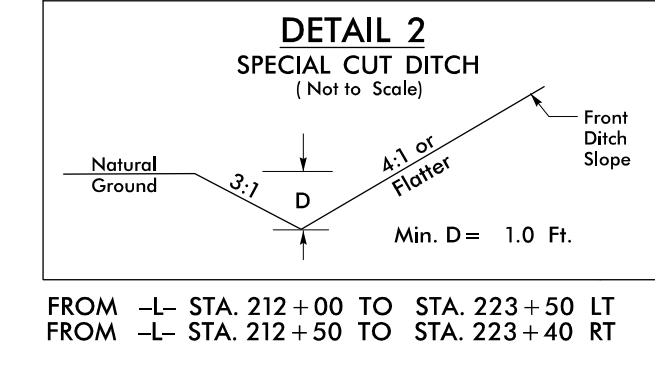
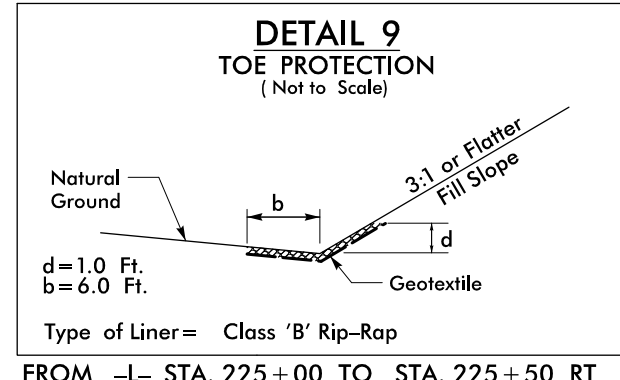
-L-
 PI Sta 211+4.26 PI Sta 224+45.04
 $\Delta = 12' 08" 25.1" (RT)$ $\Delta = 16' 06" 19.2" (RT)$
 $D = 3' 22" 13.2"$ $D = 4' 46" 28.7"$
 $L = 360.21'$ $L = 337.31'$
 $T = 180.78'$ $T = 169.77'$
 $R = 1,700.00'$ $R = 1,200.00'$
 $SE = 0.04$ $SE = 0.04$
 $Lr = 132'$ $Lr = 132'$



MATCHLINE -L- STA. 212+00.00
SEE SHEET 18

MATCHLINE -L- STA. 225+50.00
SEE SHEET 20

80 x 25 x 3
1.5 inch Skimmer
with 1.25 inch
Orifice Diameter
7 ft. weir
ID 19.1



CLEARING AND GRUBBING
EROSION CONTROL FOR
CONSTRUCTION SHEET 19

NOTE:
PLACE TEMPORARY ROCK SEDIMENT DAMS TYPE - B
AND TEMPORARY ROCK SILT CHECKS TYPE - A AT
DRAINAGE OUTLETS.