


-L-
 PI Sta 157+76.14
 $\Delta = 8^{\circ} 06' 07.1''$ (LT)
 D = 2' 17" 30.6"
 L = 353.51'
 T = 177.05'
 R = 2,500.00'
 SE = 0.03
 Lr = 150'

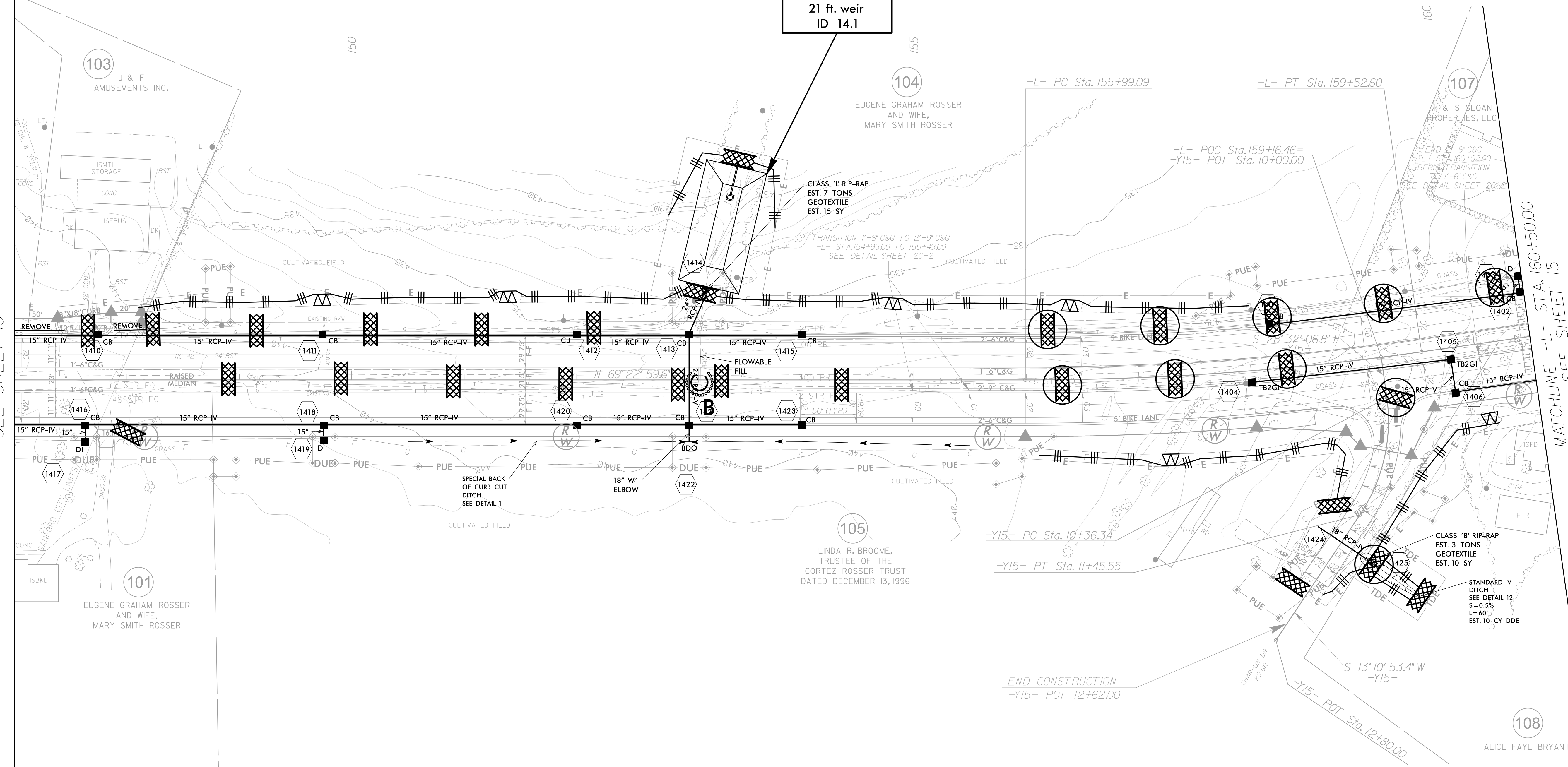
-Y15-
 PI Sta 10+93.49
 $\Delta = 41^{\circ} 43' 00.3''$ (RT)
 D = 38' 11" 49.9"
 L = 109.21'
 T = 57.15'
 R = 150.00'
 SE = SEE PLANS

NAD 83 / NSRS 2007

PROJECT REFERENCE NO. R-3830	SHEET NO. EC-14/CONST.14
R/W SHEET NO.	
ROADWAY DESIGN ENGINEER	HYDRAULICS ENGINEER
 TGS ENGINEERS 804-C N. LAFAYETTE ST SHELBY, NC 28150 PH (704) 476-0003 CORP. LICENSE NO.: C-0275	

MATCHLINE -L- STA. 147+00.00
SEE SHEET 13

MATCHLINE -L- STA. 160+50.00
SEE SHEET 15



110 x 55 x 3
 2.5 inch Skimmer
 with 2.125 inch
 Orifice Diameter
 21 ft. weir
 ID 14.1

NOTE:
 CLEARING AND GRUBBING
 EROSION CONTROL FOR
 CONSTRUCTION SHEET 14
 PLACE TEMPORARY ROCK SEDIMENT DAMS TYPE - B
 AND TEMPORARY ROCK SILT CHECKS TYPE - A AT
 DRAINAGE OUTLETS.

