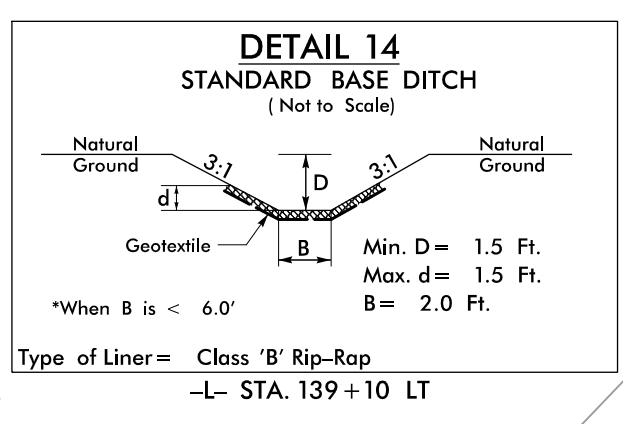


-L-
 PI Sta 130+71.82
 $\Delta = 31^{\circ}44'13.7"$ (LT)
 $D = 2^{\circ}51'53.2"$
 $L = 1,107.84'$
 $T = 568.53'$
 $R = 2,000.00'$
 $SE = 0.04$
 $Lr = 200'$

-Y14-
 PI Sta 10+84.57
 $\Delta = 11^{\circ}37'11.9"$ (LT)
 $D = 9^{\circ}32'57.5"$
 $L = 121.68'$
 $T = 61.05'$
 $R = 600.00'$
 $SE = SEE PLANS$

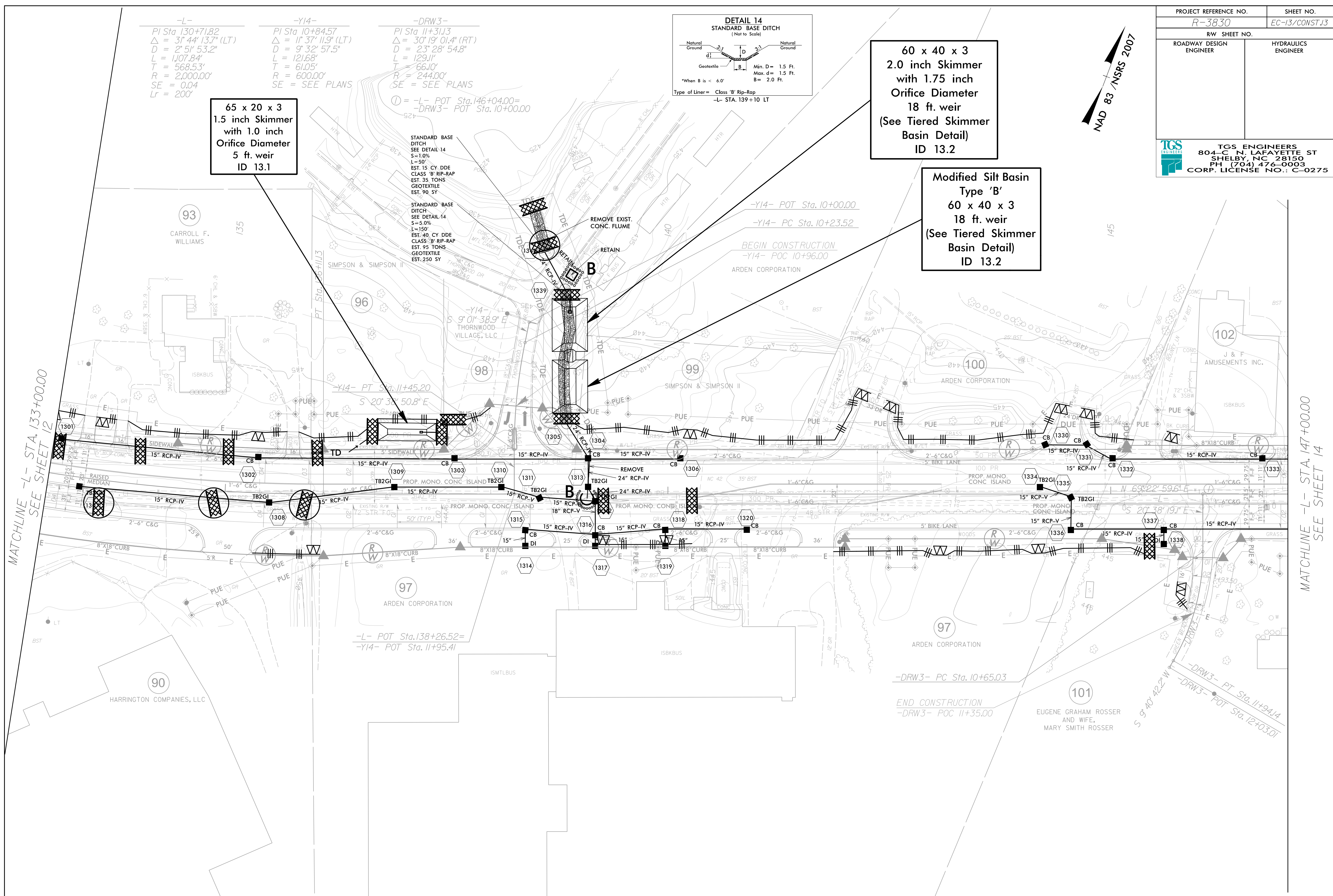
-DRW3-
 PI Sta 11+31.13
 $\Delta = 30^{\circ}19'01.4"$ (RT)
 $D = 23^{\circ}28'54.8"$
 $L = 129.11'$
 $T = 66.10'$
 $R = 244.00'$
 $SE = SEE PLANS$



60 x 40 x 3
2.0 inch Skimmer
with 1.75 inch
Orifice Diameter
18 ft. weir
(See Tiered Skimmer
Basin Detail)
ID 13.2

Modified Silt Basin
Type 'B'
60 x 40 x 3
18 ft. weir
(See Tiered Skimmer
Basin Detail)
ID 13.2

65 x 20 x 3
1.5 inch Skimmer
with 1.0 inch
Orifice Diameter
5 ft. weir
ID 13.1



MATCHLINE -L- STA. 133+00.00
SEE SHEET 12

MATCHLINE -L- STA. 147+00.00
SEE SHEET 14

IN LIEU OF ROCK INLET SEDIMENT TRAP TYPE C, UTILIZE FABRIC INSERT INLET PROTECTION DEVICES IN AREAS WHERE WATER MAY POND ON ROAD OPEN TO LIVE TRAFFIC.

CLEARING AND GRUBBING EROSION CONTROL FOR CONSTRUCTION SHEET 13

NOTE: PLACE TEMPORARY ROCK SEDIMENT DAMS TYPE - B AND TEMPORARY ROCK SILT CHECKS TYPE - A AT DRAINAGE OUTLETS.