
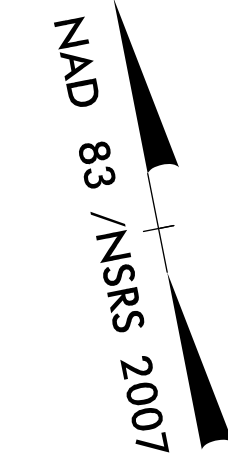
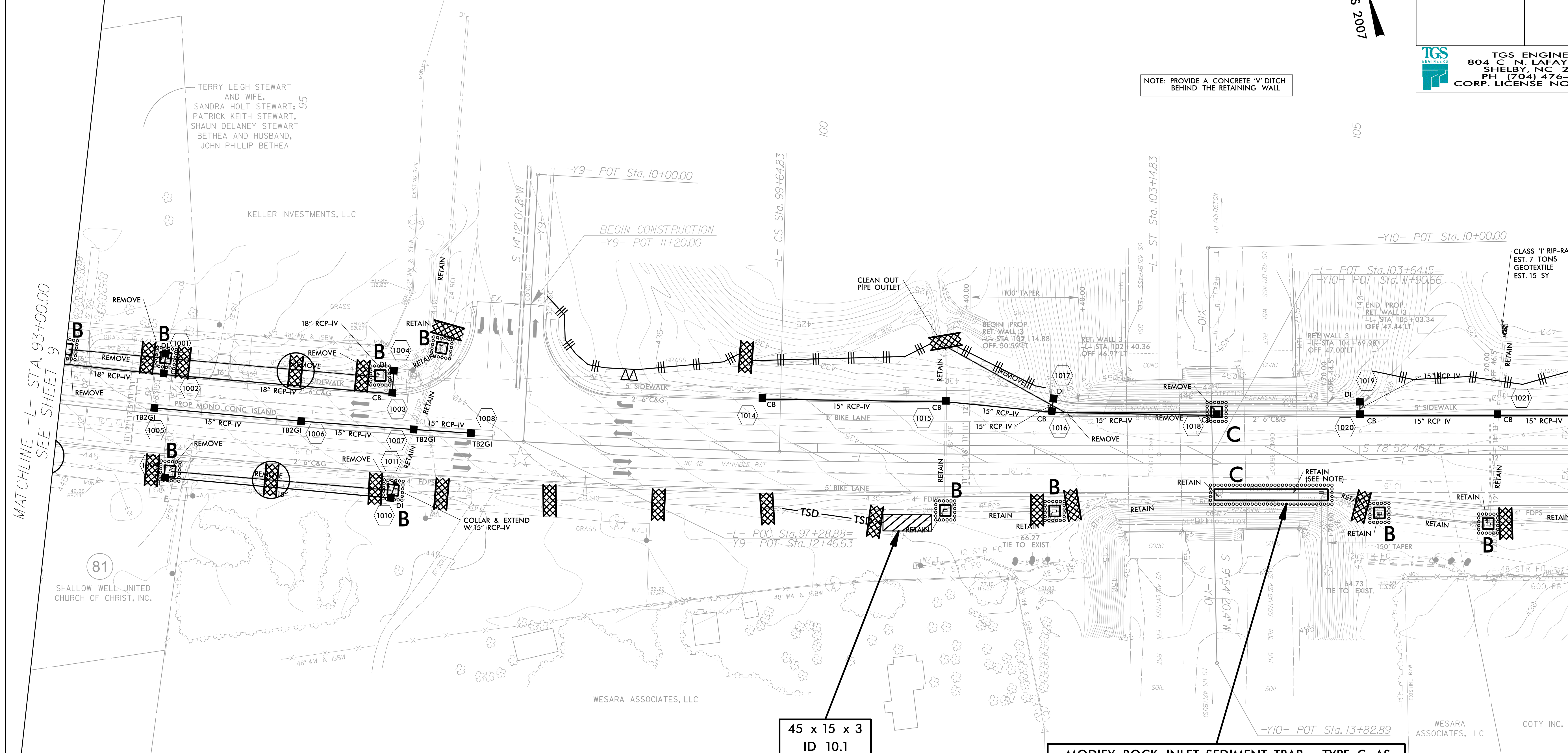


-L-  
 PI Sta 92+54.12 PIs Sta 100+81.50  
 $\Delta = 10^{\circ} 41' 27.5''$  (LT)  $\Theta_s = 1^{\circ} 18' 44.7''$   
 $D = 0^{\circ} 44' 59.8''$   $L_s = 350.00'$   
 $L = 1,425.57'$   $LT = 233.34'$   
 $T = 714.86'$   $ST = 116.67'$   
 $R = 7,640.00'$   
 SE = SEE PLANS

PROJECT REFERENCE NO. R-3830	SHEET NO. EC-10/CONST.10
RW SHEET NO.	
ROADWAY DESIGN ENGINEER	HYDRAULICS ENGINEER
 <b>TGS ENGINEERS</b> 804-C N. LAFAYETTE ST SHELBY, NC 28150 PH: (704) 476-0009 CORP. LICENSE NO.: C-0275	



NOTE: PROVIDE A CONCRETE 'V' DITCH BEHIND THE RETAINING WALL



MATCHLINE -L- STA. 93+00.00  
SEE SHEET 9

MATCHLINE -L- STA. 107+00.00  
SEE SHEET 11

45 x 15 x 3  
ID 10.1

MODIFY ROCK INLET SEDIMENT TRAP - TYPE C AS DIRECTED TO ENCAPSULATE DI AND TRENCH DRAIN.

NOTE: THE EXISTING SHOULDER AND TRENCH DRAIN SHALL NOT BE DISTURBED FROM -L- STA. 102+66.27 TO 104+64.73 (RT.)

CLEARING AND GRUBBING  
EROSION CONTROL FOR  
CONSTRUCTION SHEET 10

NOTE:  
PLACE TEMPORARY ROCK SEDIMENT DAMS TYPE - B  
AND TEMPORARY ROCK SILT CHECKS TYPE - A AT  
DRAINAGE OUTLETS.

 UPGRADE EXISTING SIGNAL