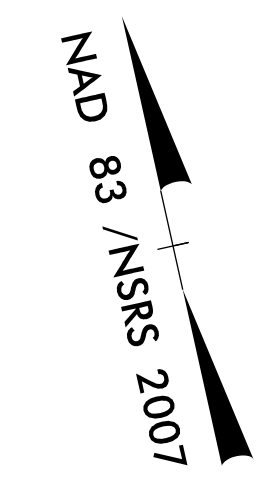
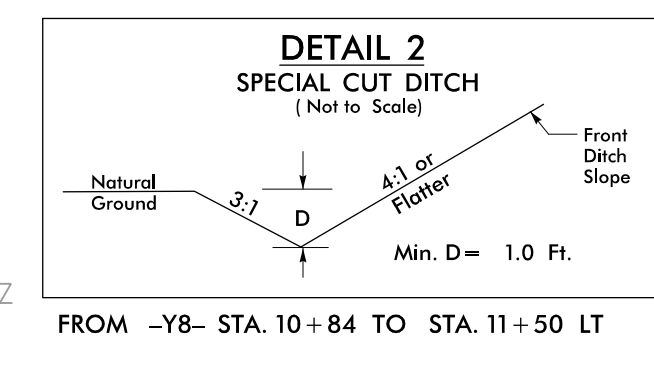


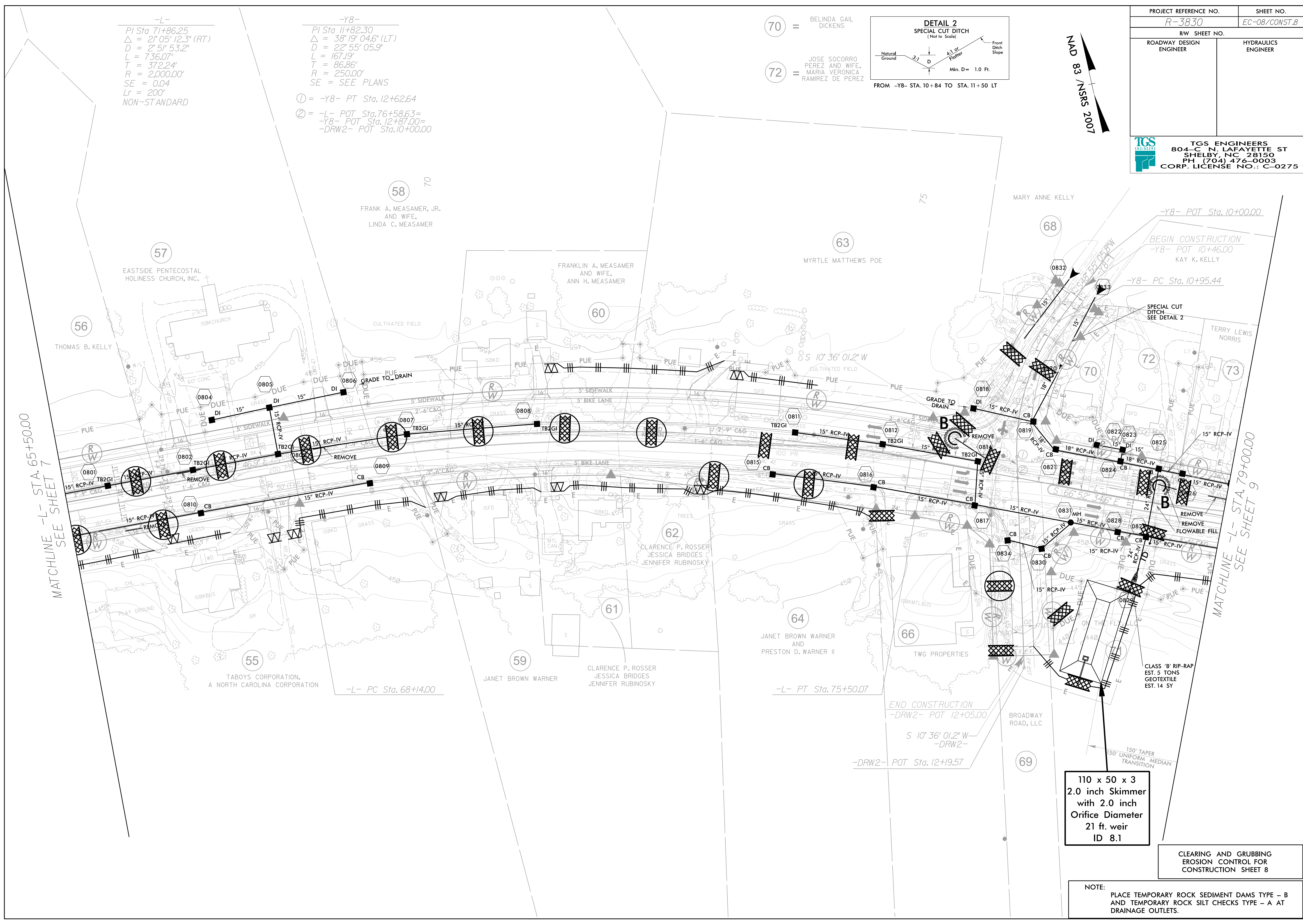
-L-  
 PI Sta 71+86.25  
 $\Delta = 2^{\circ}05'12.3"$  (RT)  
 $D = 2^{\circ}51'53.2"$   
 $L = 736.07'$   
 $T = 372.24'$   
 $R = 2,000.00'$   
 $SE = 0.04$   
 $Lr = 200'$   
 NON-STANDARD

-Y8-  
 PI Sta 11+82.30  
 $\Delta = 38^{\circ}19'04.6"$  (LT)  
 $D = 22^{\circ}55'05.9"$   
 $L = 167.19'$   
 $T = 86.86'$   
 $R = 250.00'$   
 $SE = SEE PLANS$   
 ① = -Y8- PT Sta. 12+62.64  
 ② = -L- POT Sta. 76+58.63=  
 -Y8- POT Sta. 12+87.00=  
 -DRW2- POT Sta. 10+00.00

70 = BELINDA GAIL DICKENS  
 72 = JOSE SOCORRO PEREZ AND WIFE, MARIA VERONICA RAMIREZ DE PEREZ



PROJECT REFERENCE NO. R-3830	SHEET NO. EC-08/CONST.B
RW SHEET NO.	
ROADWAY DESIGN ENGINEER	HYDRAULICS ENGINEER
 <b>TGS ENGINEERS</b> 804-C N. LAFAYETTE ST SHELBY, NC 28150 PH (704) 476-0003 CORP. LICENSE NO.: C-0275	



MATCHLINE -L- STA. 65+50.00  
SEE SHEET 7

MATCHLINE -L- STA. 79+00.00  
SEE SHEET 9

110 x 50 x 3  
 2.0 inch Skimmer  
 with 2.0 inch  
 Orifice Diameter  
 21 ft. weir  
 ID 8.1

CLEARING AND GRUBBING  
 EROSION CONTROL FOR  
 CONSTRUCTION SHEET 8

NOTE:  
 PLACE TEMPORARY ROCK SEDIMENT DAMS TYPE - B  
 AND TEMPORARY ROCK SILT CHECKS TYPE - A AT  
 DRAINAGE OUTLETS.