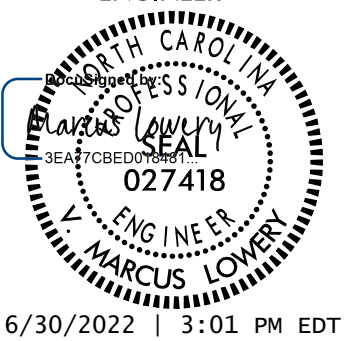
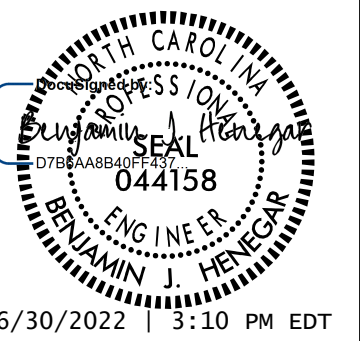


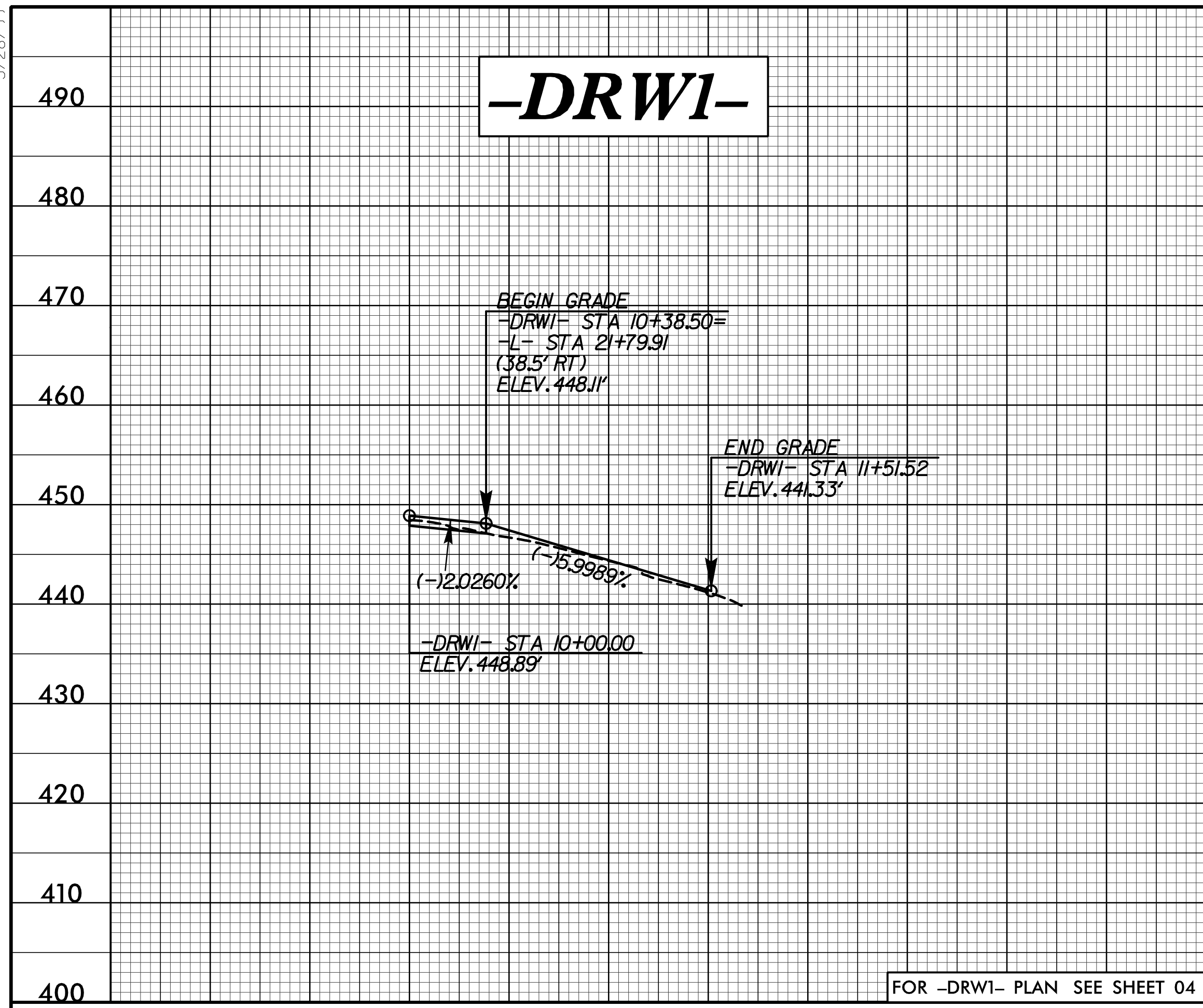
5/28/22

TGS ENGINEERS
 706 HILLSBOROUGH ST. SUITE 200
 RALEIGH, NC 27603
 PH (919) 773-8887
 CORP. LICENSE NO.: C-0275

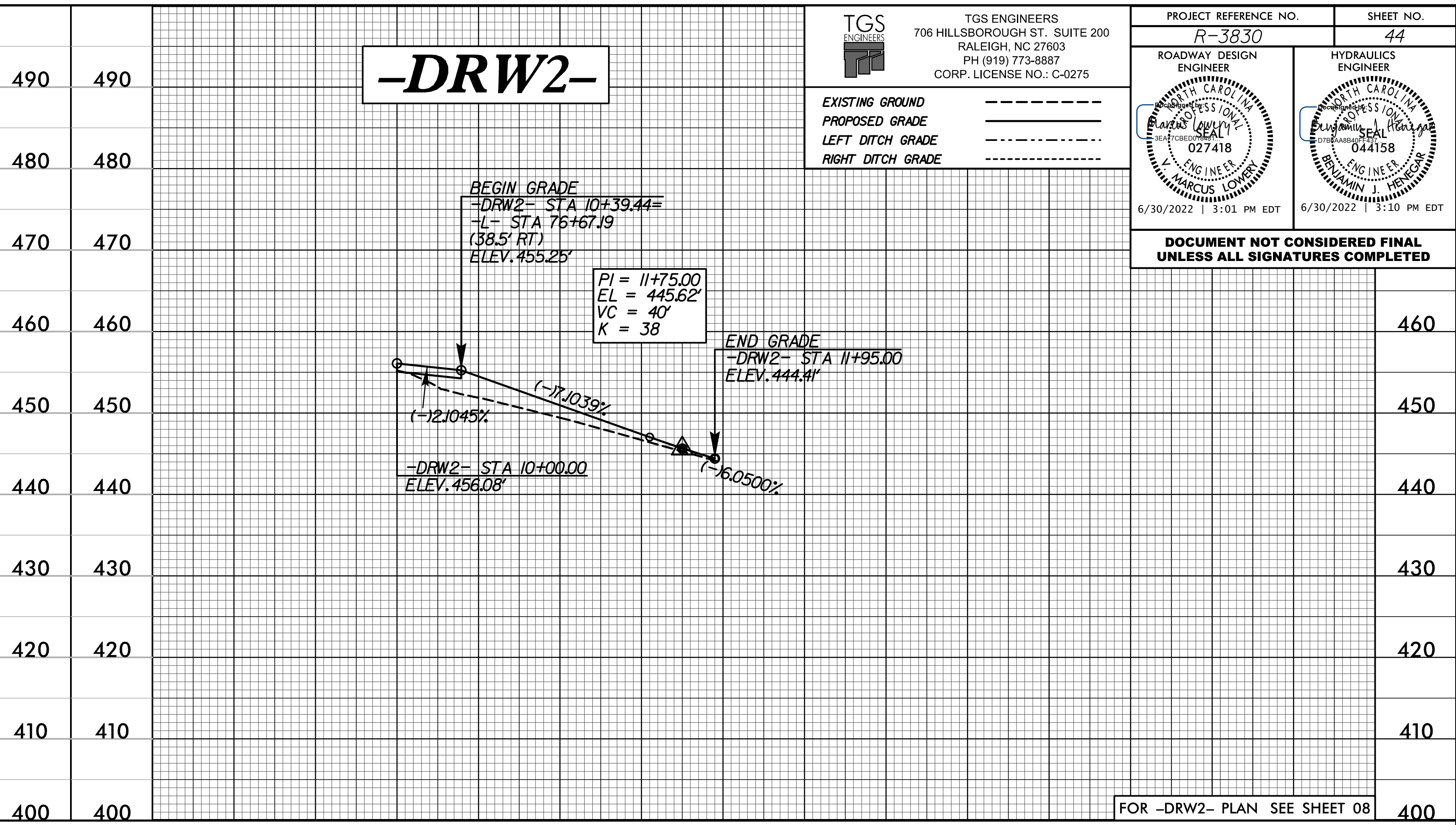
EXISTING GROUND -----
 PROPOSED GRADE _____
 LEFT DITCH GRADE - - - - -
 RIGHT DITCH GRADE - - - - -

PROJECT REFERENCE NO. R-3830	SHEET NO. 44
ROADWAY DESIGN ENGINEER 	HYDRAULICS ENGINEER 
6/30/2022 3:01 PM EDT	6/30/2022 3:10 PM EDT

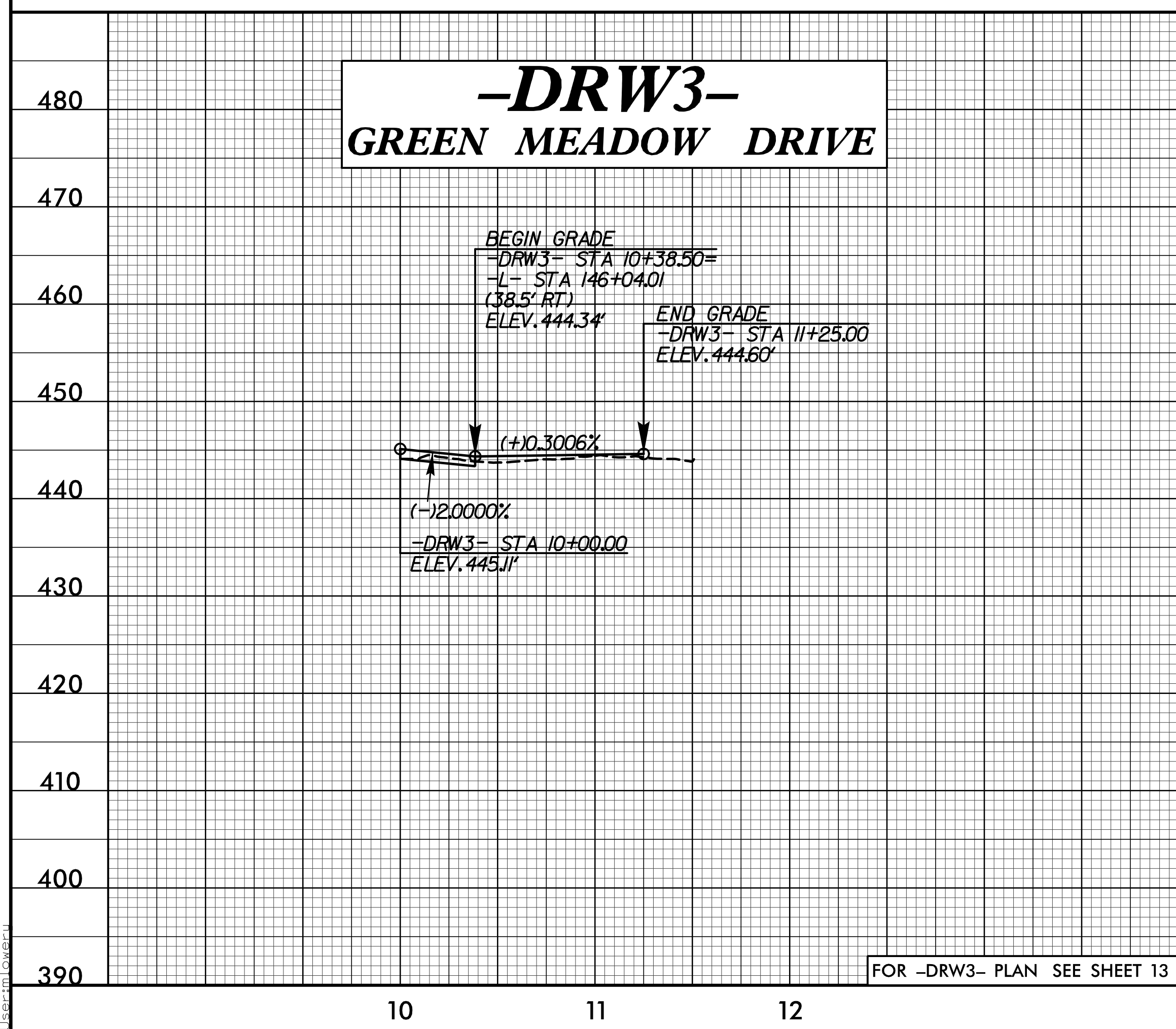
DOCUMENT NOT CONSIDERED FINAL UNLESS ALL SIGNATURES COMPLETED



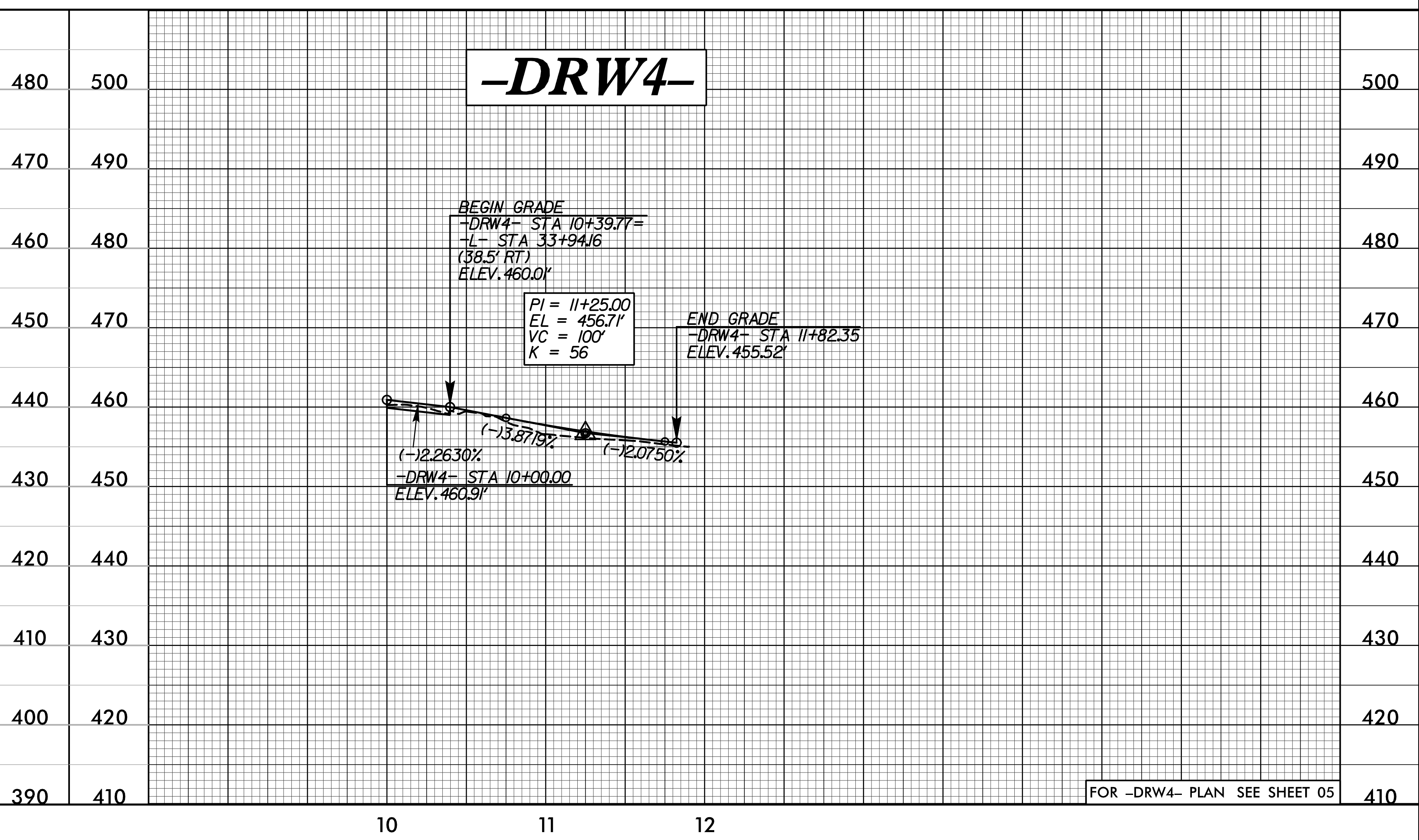
FOR -DRW1- PLAN SEE SHEET 04



FOR -DRW2- PLAN SEE SHEET 08



FOR -DRW3- PLAN SEE SHEET 13



FOR -DRW4- PLAN SEE SHEET 05

C:\Users\jglover\OneDrive\Documents\Projects\3830\Roadway\Proc\1\3830_L_rdy.plt_44.dgn