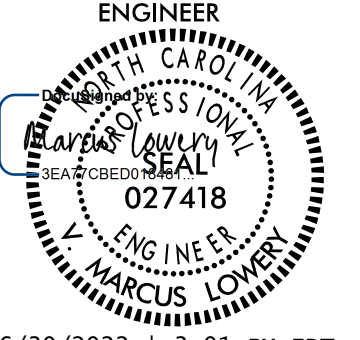
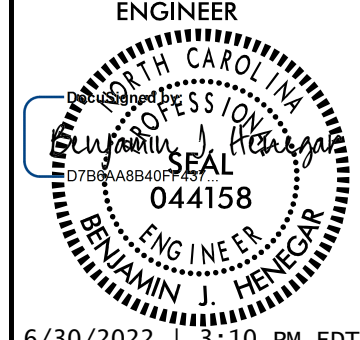


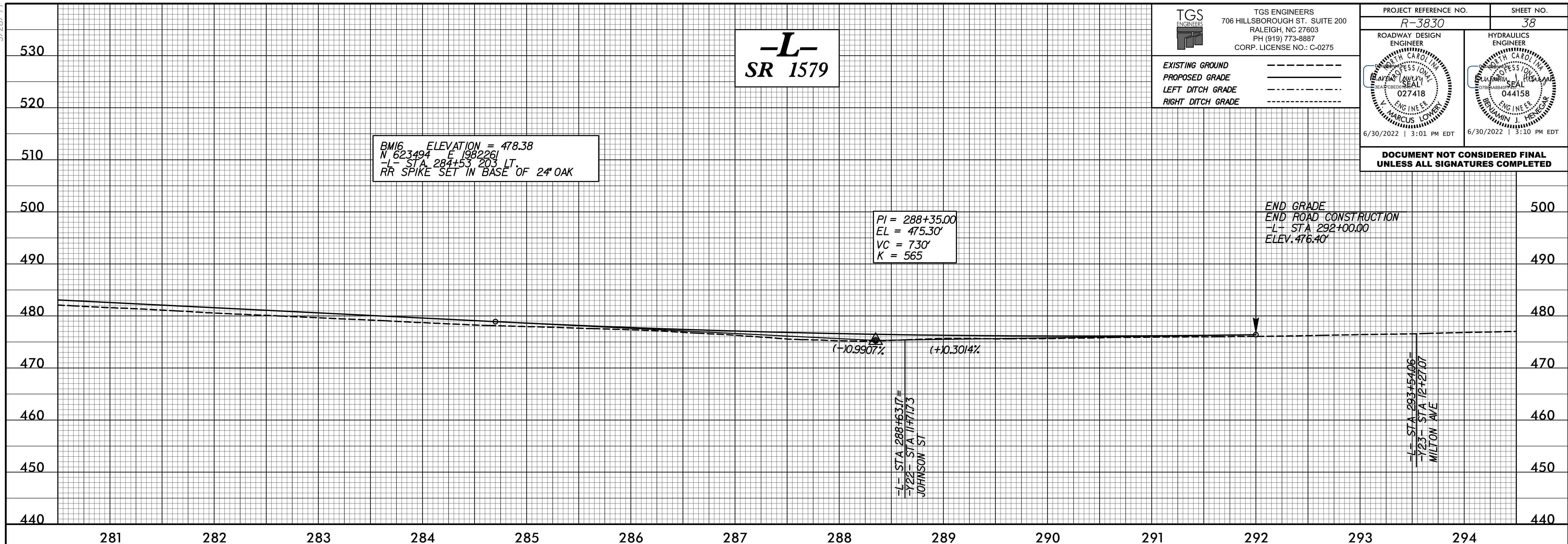
5/28/22

TGS ENGINEERS
 706 HILLSBOROUGH ST. SUITE 200
 RALEIGH, NC 27603
 PH (919) 773-8887
 CORP. LICENSE NO.: C-0275

EXISTING GROUND -----
 PROPOSED GRADE -----
 LEFT DITCH GRADE -----
 RIGHT DITCH GRADE -----

PROJECT REFERENCE NO. R-3830	SHEET NO. 38
ROADWAY DESIGN ENGINEER  J. MARCUS LOWE ENGINEER 027418 6/30/2022 3:01 PM EDT	HYDRAULICS ENGINEER  BENJAMIN J. HENEGAR ENGINEER 044158 6/30/2022 3:10 PM EDT

DOCUMENT NOT CONSIDERED FINAL UNLESS ALL SIGNATURES COMPLETED



-L- SR 1579

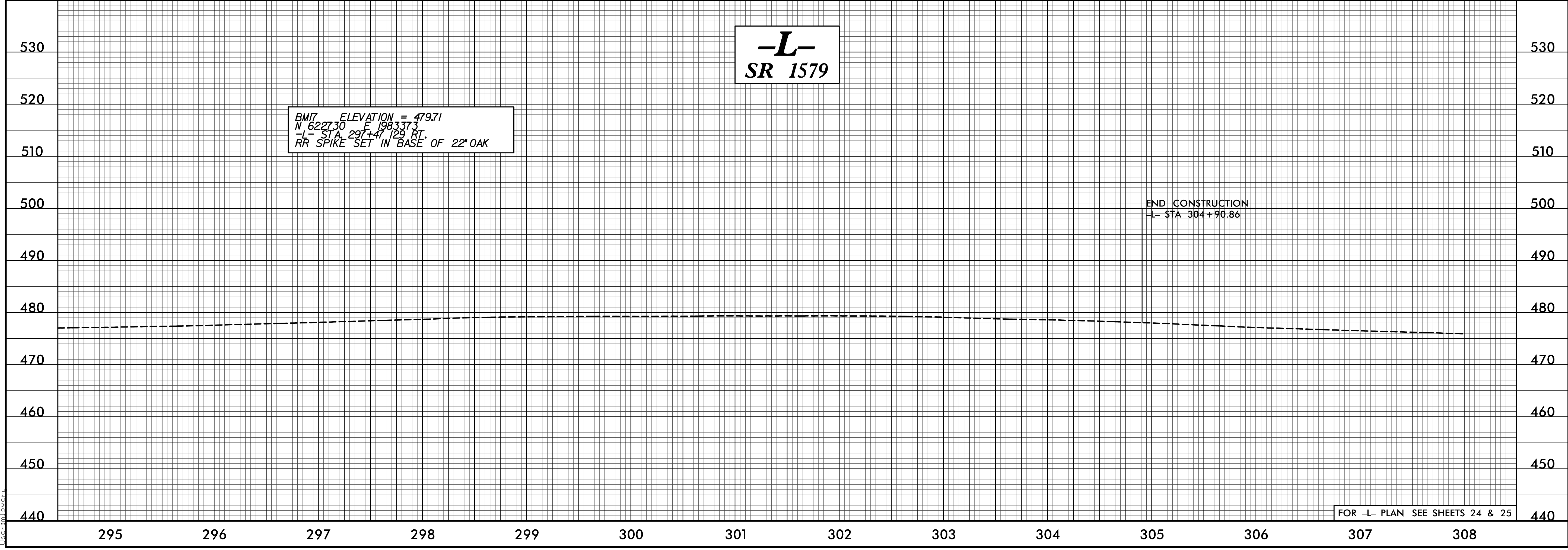
BM16 ELEVATION = 478.38
 N 623494 E 198226
 -L- STA 284+53.203 LT.
 RR SPIKE SET IN BASE OF 24" OAK

PI = 288+35.00
EL = 475.30'
VC = 730'
K = 565

END GRADE
END ROAD CONSTRUCTION
 -L- STA 292+00.00
 ELEV. 476.40'

-L- STA 288+63.17 =
 Y22 - STA 1177173
 JOHNSON ST

-L- STA 293+54.06 =
 Y23 - STA 12+2107
 MILTON AVE



-L- SR 1579

BM17 ELEVATION = 479.71
 N 622730 E 1983373
 -L- STA 297+47.129 RT.
 RR SPIKE SET IN BASE OF 22" OAK

END CONSTRUCTION
 -L- STA 304+90.86

FOR -L- PLAN SEE SHEETS 24 & 25

C:\Users\jlowe\OneDrive\Documents\Projects\3830\Roadway\Proj\3830-L-rdj-pl-38.dgn