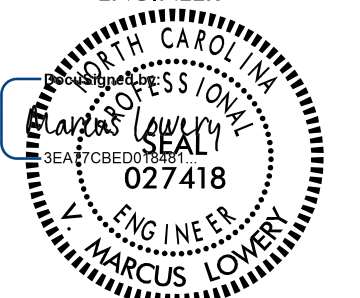
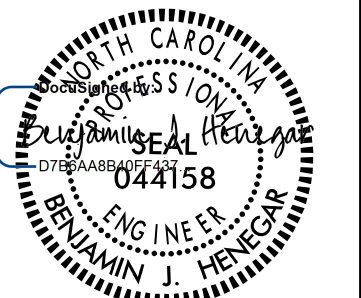


5/28/22

**TGS ENGINEERS**  
 706 HILLSBOROUGH ST. SUITE 200  
 RALEIGH, NC 27603  
 PH (919) 773-8887  
 CORP. LICENSE NO.: C-0275

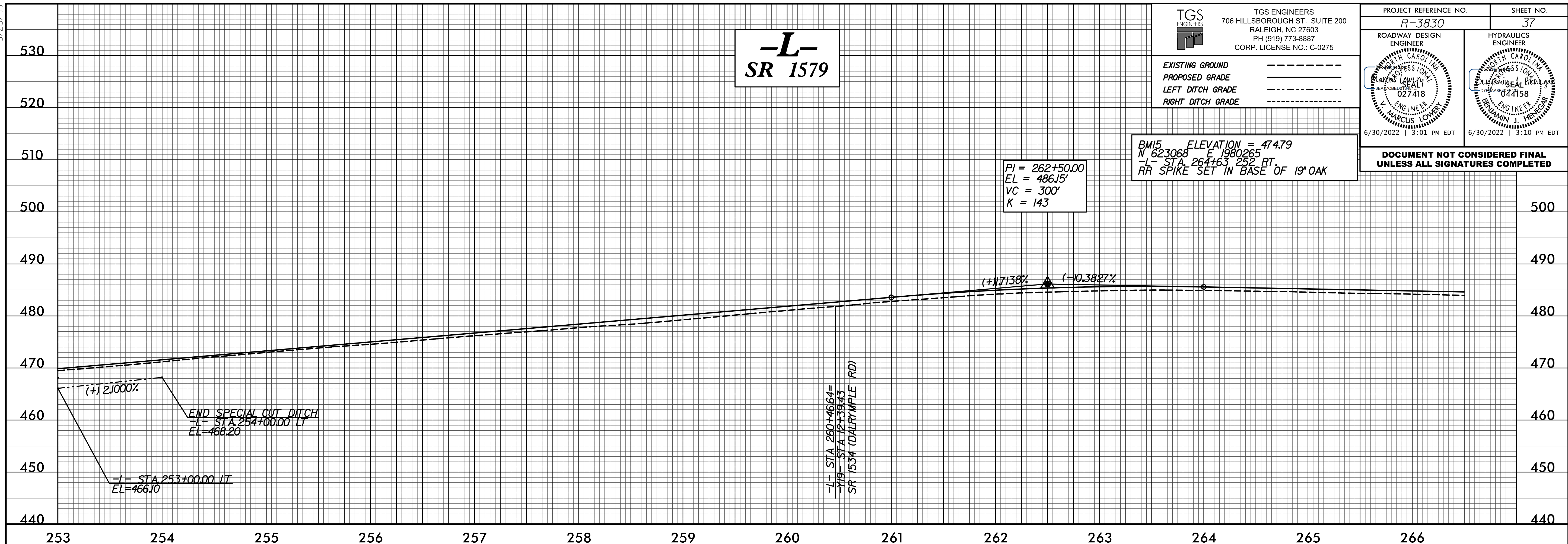
EXISTING GROUND -----  
 PROPOSED GRADE -----  
 LEFT DITCH GRADE -----  
 RIGHT DITCH GRADE -----

PROJECT REFERENCE NO. <b>R-3830</b>	SHEET NO. <b>37</b>
ROADWAY DESIGN ENGINEER  J. MARCUS LOWER 027418 6/30/2022   3:01 PM EDT	HYDRAULICS ENGINEER  BENJAMIN J. HENEGAR 044158 6/30/2022   3:10 PM EDT

**DOCUMENT NOT CONSIDERED FINAL UNLESS ALL SIGNATURES COMPLETED**

BMI5 ELEVATION = 474.79  
 N 62.3068 E 1980.265  
 -L- STA 264+63.252 RT  
 RR SPIKE SET IN BASE OF 19" OAK

PI = 262+50.00  
 EL = 486.15'  
 VC = 300'  
 K = 143



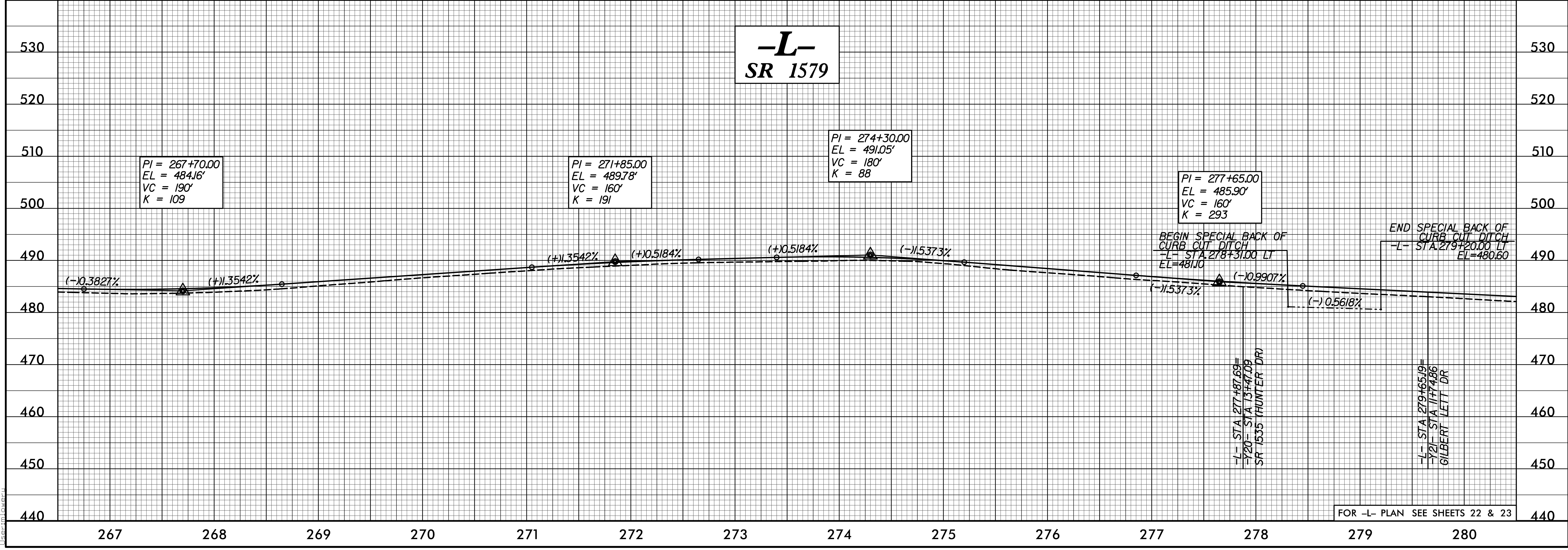
# -L- SR 1579

PI = 274+30.00  
 EL = 491.05'  
 VC = 180'  
 K = 88

PI = 271+85.00  
 EL = 489.78'  
 VC = 160'  
 K = 191

PI = 267+70.00  
 EL = 484.16'  
 VC = 190'  
 K = 109

PI = 277+65.00  
 EL = 485.90'  
 VC = 160'  
 K = 293



FOR -L- PLAN SEE SHEETS 22 & 23

4/8/2022  
 C:\Users\jlowe\OneDrive\Documents\Roadway\Proj\R-3830\Roadway\Profile\Profile.plt