

5/28/2022

TGS ENGINEERS
 706 HILLSBOROUGH ST. SUITE 200
 RALEIGH, NC 27603
 PH (919) 773-8887
 CORP. LICENSE NO.: C-0275

EXISTING GROUND -----
 PROPOSED GRADE -----
 LEFT DITCH GRADE -----
 RIGHT DITCH GRADE -----

PROJECT REFERENCE NO. R-3830	SHEET NO. 35
ROADWAY DESIGN ENGINEER MARCUS LOVER 027418	HYDRAULICS ENGINEER J. HENNEAR 044158
6/30/2022 3:01 PM EDT	6/30/2022 3:10 PM EDT

**DOCUMENT NOT CONSIDERED FINAL
UNLESS ALL SIGNATURES COMPLETED**

-L- SR 1579

PIPE HYDRAULIC DATA
 *1801 -L- Sta. 205+42

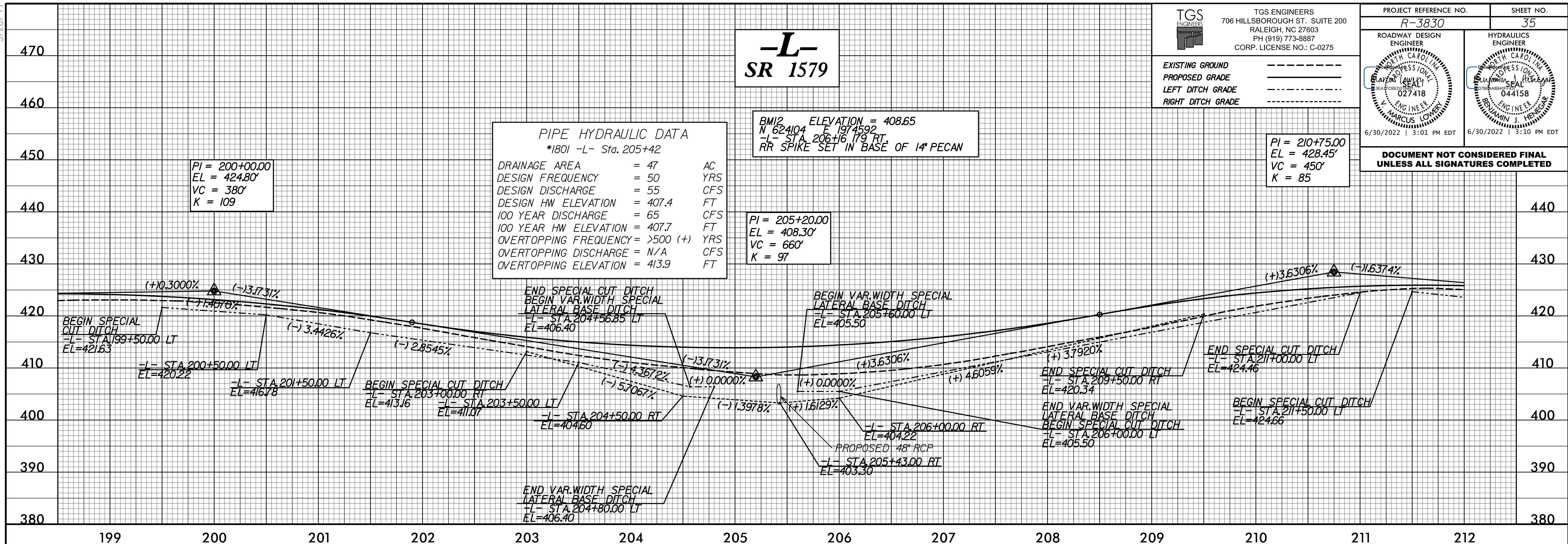
DRAINAGE AREA	= 47	AC
DESIGN FREQUENCY	= 50	YRS
DESIGN DISCHARGE	= 55	CFS
DESIGN HW ELEVATION	= 407.4	FT
100 YEAR DISCHARGE	= 65	CFS
100 YEAR HW ELEVATION	= 407.7	FT
OVERTOPPING FREQUENCY	= >500 (+)	YRS
OVERTOPPING DISCHARGE	= N/A	CFS
OVERTOPPING ELEVATION	= 413.9	FT

BM12 ELEVATION = 408.65
 N 624104 E 1974592
 -L- STA 206+16.179 RT
 RR SPIKE SET IN BASE OF 1" PECAN

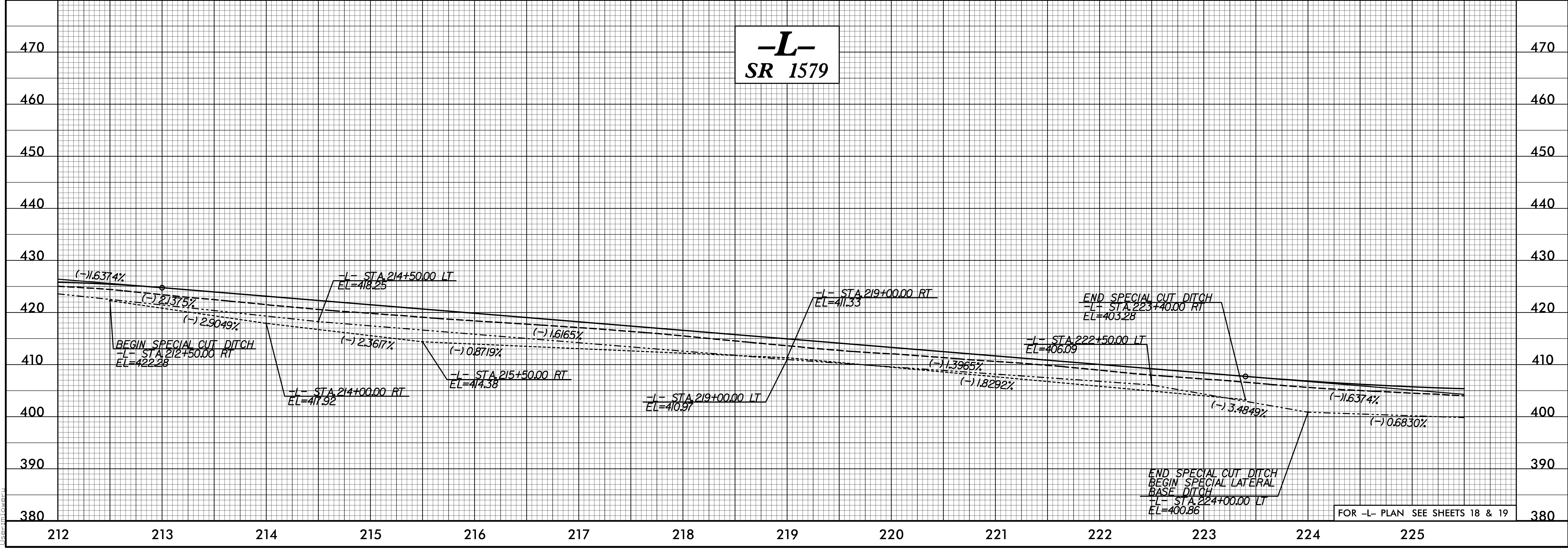
PI = 210+75.00
 EL = 428.45'
 VC = 450'
 K = 85

PI = 205+20.00
 EL = 408.30'
 VC = 660'
 K = 97

PI = 200+00.00
 EL = 424.80'
 VC = 380'
 K = 109



-L- SR 1579



FOR -L- PLAN SEE SHEETS 18 & 19

C:\Users\mlover\OneDrive\Documents\Projects\3830\Roadway\Proj\3830_L_rdy.plt.L_35.dgn
6/30/2022 3:01 PM
User: mlover